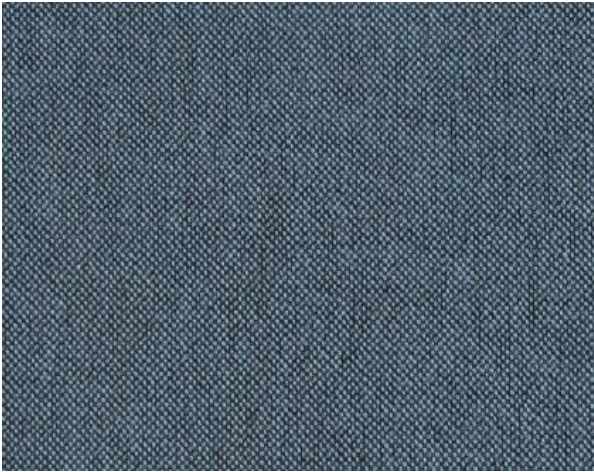


SAHCO

1831



Clay

Type: Upholstery

Composition: 76% linen, 21% cotton, 3% polyester

Yarn type: Staple / Filament

Binding: Dobby

Width: Approx. 140 cm, 55 inches

Weight: Approx. 1090 g/lin.m, 35 oz/ly

Repeat: None

Foreign fibers may occur in light colours

Colour difference may occur

Cleaning: Vacuum clean frequently, ideally every week.

Remove stains as soon as they occur, with clean warm water or sparkling water. Extraction clean when necessary.

Extraction cleaning might dissolve water based glue. Pay attention to temperature and amount of cleaning fluid.

Disinfection, see www.kvadrat.dk/en/sahco



10 year
warranty



Abrasion

Approx. 45.000 Martindale rubs, EN ISO 12947

Abrasion test results exceeding ACT performance guidelines are not an indicator of product lifespan. Multiple factors affect fabric durability and appearance retention

Pilling

Note 4, EN ISO 12945

Seam slippage

Seam parallel to warp: 2.8 mm, parallel to weft: 2.8 mm
EN ISO 13 936-2 180 Nweton

Lightfastness

Note 4-6 ISO 105-B02

Fastness to rubbing

Dry note 4 ISO 105-X12

Wet note 3-4 ISO 105-X12

Flame resistance

BS 5852 Crib 5 with treatment *

BS 5852 Part 1

EN 1021-1/2

IMO FTP Code 2010 Part 8

US Cal. Bull. 117-2013 with Cal. 117 compliant interliner

** To pass this test flame retardant treatment is necessary. We are looking into more environmental friendly alternatives but for now the external finisher may use a treatment containing halogen based flame retardants.*

SAHCO

1831

ACT Guidelines Woven fabrics

Flammability

US Cal. Bull. 117-2013 with Cal. 117 compliant interliner

Dry & Wet Crocking AATCC 8

Dry Crocking: Grade 4.5

Wet Crocking: Grade 1.5

Colour Fastness to Light AATCC 16

Grade 4.5 minimum 40 hours

Physical properties

Pilling ASTM D3511 Class 4

Breaking Strength ASTM D5034 warp 278 / weft 356 lbs

Seam Slippage ASTM D4034 warp 99 / weft 93 lbs

Abrasion ASTM D4966

45.000 cycles Martaindale – High Traffic

Characteristics of linen

Minor irregularities such as knots or slubs

Fabric including vegetable parts

Quality benefits

Complies with Möbelfakta

Environmental benefits

Follow the EU Ecolabel dye restrictions incl. AZO dye and heavy metal restrictions

No use of halogen based flame retardants (incl. brominated and chlorinated)

REACH compliant

Californian Proposition 65 list compliant

LBC Red list compliant

Green building certificates

Greenguard Gold: Low chemical emission

Environmental Product Declaration (EPD): Based on a aLCA following EN 15804 and follow the standard of ISO 14040

Health Product Declaration (HPD): Declaring textile content and substance

Country of origin

Turkey

Launch

2019

Warranty

2 years. See terms and conditions on kvadrat.dk

Kvadrat packaging and cardboard is recyclable. Cardboard material is FSC certified and / or contains recycled content.

For further information

www.kvadrat.dk/en/sahco