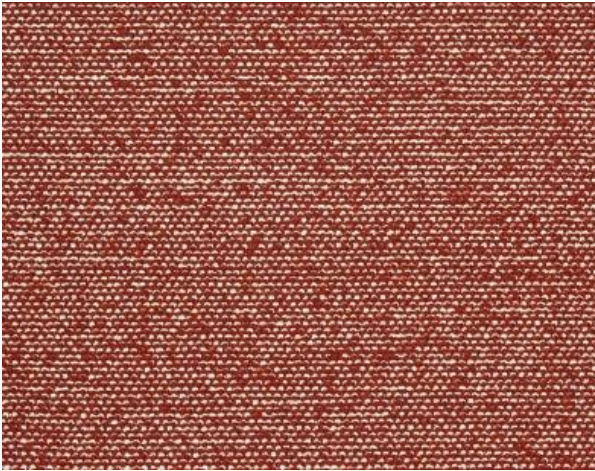


SAHCO

1831



Safire

Type: Upholstery

Composition: 43% viscose, 17% polyacrylic, 15% wool, 9% cotton, 8% linen, 8% polyester

Yarn type: Staple / Filament

Binding: Plain

Width: Approx. 140 cm, 55 inches

Weight: Approx. 1010 g/lin.m, 25 oz/ly

Repeat: none

Colour difference may occur

Cleaning: Vacuum clean frequently, ideally every week.

Remove stains as soon as they occur, with clean warm water or sparkling water. Extraction clean when necessary. Extraction cleaning might dissolve water based glue. Pay attention to temperature and amount of cleaning fluid.

Disinfection, see www.kvadrat.dk/en/sahco



10 year
warranty



Abrasion

Approx. 44.000 Martindale rubs, EN ISO 12947

Abrasion test results exceeding ACT performance guidelines are not an indicator of product lifespan. Multiple factors affect fabric durability and appearance retention

Pilling

Note 3, EN ISO 12945

Seam slippage

Seam parallel to warp: 4.4 mm
parallel to weft: 3.2 mm

Lightfastness

Note 5-6 ISO 105-B02

Fastness to rubbing

Dry note 4-5 ISO 105-X12

Wet note 3 ISO 105-X12

Flame resistance

BS 5852 Crib 5 with treatment *

BS 5852 Part 1

EN 1021-1/2

IMO FTP Code 2010 Part 8

US Cal. Bull. 117-2013

** To pass this test flame retardant treatment is necessary. We are looking into more environmental friendly alternatives but for now the external finisher may use a treatment containing halogen based flame retardants.*

ACT Guidelines Woven fabrics

Flammability

US Cal. Bull. 117-2013

Dry & Wet Crocking AATCC 8

Dry Crocking: Grade 4.5

Wet Crocking: Grade 4.0

SAHCO

1831

Colour Fastness to Light AATCC 16

Grade 5 minimum 40 hours

Country of origin

Italy

Physical properties

Pilling ASTM D3511 Class 4

Breaking Strength ASTM D5034 warp 200 / weft 147 lbs

Seam Slippage ASTM D4034 warp 100 / weft 42,5 lbs

Launch

2019

Abrasion ASTM D4966

44.000 cycles Martindale – High Traffic

Warranty

10 years. See terms and conditions on kvadrat.dk

Environmental benefits

Follow the EU Ecolabel dye restrictions incl. AZO dye
and heavy metal restrictions

No use of halogen based flame retardants (incl. brominated
and chlorinated)

REACH compliant

Californian Proposition 65 list compliant

LBC Red list compliant

Kvadrat packaging and cardboard is recyclable. Cardboard
material is FSC certified and / or contains recycled content.

For further information

www.kvadrat.dk/en/sahco

Green building certificates

Greenguard Gold: Low chemical emission

Environmental Product Declaration (EPD): Based on a aLCA
following EN 15804 and follow the standard of ISO 14040

Health Product Declaration (HPD): Declaring textile content and
substance