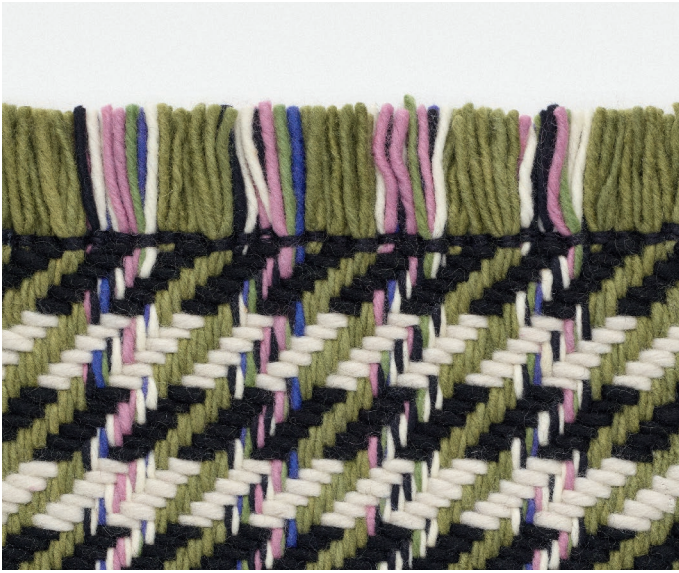


Dashes
Daniel Costa



kvadrat



Dashes

Hand woven

100% pure New Zealand wool

7 colours: 7

10 mm high

3000 g/m²

300 cm × 800 cm

Dashes

Making a parallel with the joy and comfort we find in our seasonal wardrobes, designer Daniel Costa has brought the warmth of handwoven pure New Zealand wool to this characterful and contemporary design. "I was inspired by classic and authentic tweed textiles – in particular the herringbone and pied de poule patterns," he explains. "I wanted to dress a room in a graphic and alluring rug just as we like to dress ourselves in a beautiful woven woolen winter coat."

A bold design in a twill construction using felted mill spun yarns for both weft and warp, *Dashes* is a flat woven rug that takes the classic two coloured pied de poule and abstracts it into a multicoloured polydimensional graphic.

The warp is built out of yarns in six different colours, a plain colour used in alternation with a colourful multicoloured stripe. The weft sees a slightly thicker yarn used, with two contrasting neutral colours interchanged. On the top of each rug the dark colour builds the rip of the twill and on the lower part the rip is woven in a lighter colour. The locking yarn corresponds to the rip of the twill.

Dashes comes in seven colourways, of which four focus on neutral, natural shades such as River Pebbles and Mountain Rock. The remaining three see the collection injected with colourful hues including Red Terrazzo, Electric Blue and Flower Field. Each colourway has been created to enhance the diagonal lines, making the intricate design seem to move and dance.

A design that combines well with all natural flooring materials such as oak, slate, concrete, and terrazzo, *Dashes* is suitable for medium to heavy residential and commercial use.

For further information, please contact press@kvadrat.org

kvadrat.dk