

Écriture

SAHCO



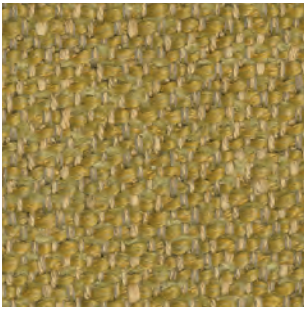
410



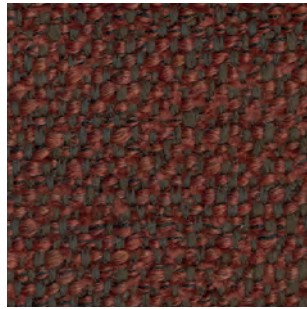
200



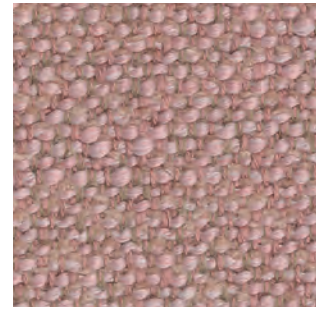
100



470



580



640



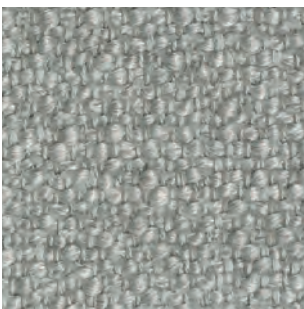
570



170



380



130

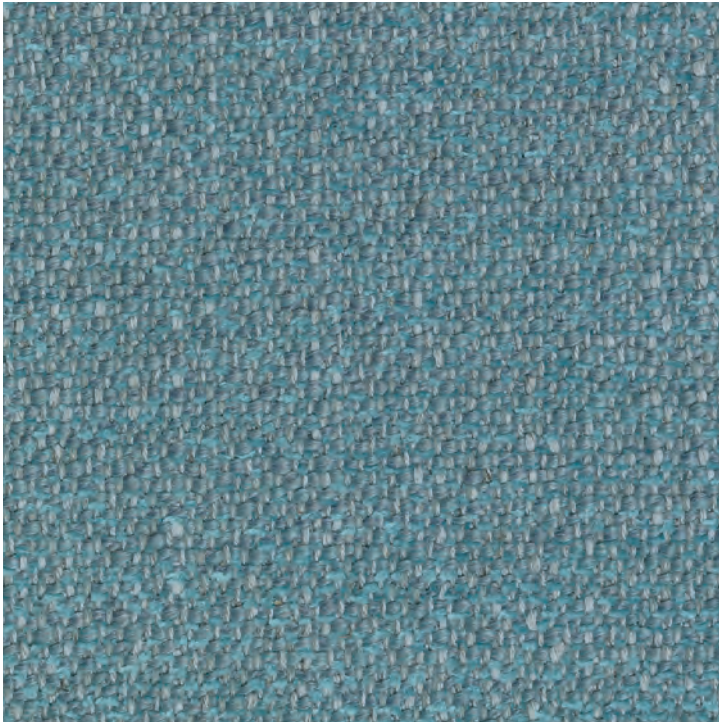


150

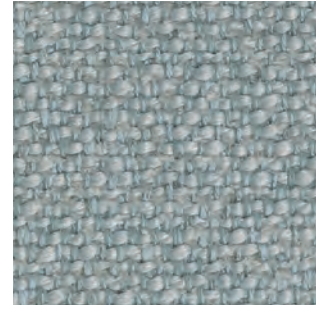


180

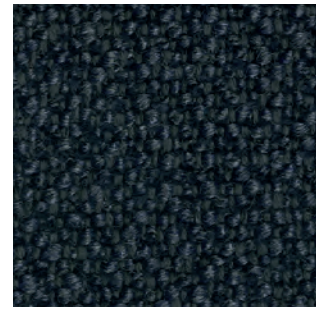
# Ecriture



760



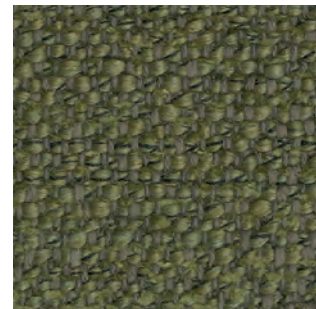
710



780



270



970



210



240



910

## Ecriture

### DK

#### Anvendelse Polstring

**Beskrivelse** 40% polyakryl, 27% polyester, 18% viskose, 9% hør, 6% bomuld. Bredde 140 cm. Vægt 1040 g/lbm

**Testning** Lysæghed 5-6 (ISO 1-8). Pilling 4-5 (ISO 1-5). Slidstyrke: 70.000 Martindale. Flammesikring BS 5852 Crib 5 med behandling. BS 5852 part 1. EN 1021-1/2, US Cal. Bull. 117-2013

**Vedligeholdelse** Se ISO symboler

### UK/US

#### Application Upholstery

**Description** 40% polyacrylic, 27% polyester, 18% viscose, 9% linen, 6% cotton.

Width 140 cm / 55 in. Weight 1040 g/lm

33.5 oz/sq

**Tests** Lightfastness 5-6 (ISO 1-8). Pilling 4-5 (ISO 1-5). Abrasion 70.000 Martindale\*. Flame resistance BS 5852 Crib 5 with treatment. BS 5852 part 1. EN 1021-1/2, US Cal. Bull. 117-2013

**Care** Please see the ISO symbols

### DE

#### Anwendungsbereich Bezugsstoff

**Beschreibung** 40% Polyacryl, 27% Polyester, 18% Viskose, 9% Leinen, 6% Baumwolle.

Breite 140 cm. Gewicht 1040 g/lfd. Meter

**Testergebnisse** Lichtechtheit 5-6 (ISO 1-8). Pilling 4-5 (ISO 1-5). Scheuerfestigkeit 70.000 Martindale. Flammschutz BS 5852 Crib 5 mit Behandlung. BS 5852 part 1. EN 1021-1/2, US Cal. Bull. 117-2013

**Pflege** Siehe ISO Pflegesymbole

### NL

#### Toepassing Bekleding stof

**Omschrijving** 40% polyacryl, 27% polyester, 18% viscose, 9% linnen, 6% katoen. Breedte 140 cm. Gewicht 1040 gr/str.m

**Testgegevens** Lichtechtheid 5-6 (ISO 1-8). Pilling 4-5 (ISO 1-5). Slijtvastheid 70.000 Martindale. Vlamvertragendheid BS 5852 Crib 5 met behandeling. BS 5852 part 1. EN 1021-1/2, US Cal. Bull. 117-2013

**Onderhoud** Zie de ISO symbolen

### FR

#### Domaine d'utilisation Tissu d'ameublement

**Description** 40% polyacrylique, 27% polyester, 18% viscose, 9% lin, 6% coton. Largeur 140 cm.

Poids 1040 g/ml

**Tests** Résistance à la lumière 5-6 (ISO 1-8). Boulochage 4-5 (ISO 1-5). Résistance à l'abrasion 70.000 Martindale. Normes au feu BS 5852 Crib 5 avec traitement. BS 5852 part 1. EN 1021-1/2, US Cal. Bull. 117-2013

**Entretien** Voir les symboles ISO

### IT

#### Destinazione d'uso Tessuti per tappezzeria

**Caratteristiche** 40% poliacrilico, 27% poliestere, 18% viscosa, 9% lino, 6% cotone.

Larghezza 140 cm. Peso 1040 gr/ml

**Test** Resistenza alla luce 5-6 (ISO 1-8). Pilling 4-5 (ISO 1-5). Abrasione 70.000 Martindale. Ignifugazione BS 5852 Crib 5 se trattato ignifugo. BS 5852 part 1. EN 1021-1/2, US Cal. Bull. 117-2013

**Manutenzione** Per favore seguire simboli ISO

### ES

#### Aplicación Tapicería

**Descripción** 40% poliacrílico, 27% poliéster, 18% viscosa, 9% lino, 6% algodón.

Anchura 140 cm. Peso 1040 gr/ml

**Pruebas** Resistencia a la luz 5-6 (ISO 1-8). Relleno 4-5 (ISO 1-5). Resistencia al desgaste 70.000 Martindale. Resistencia al fuego BS 5852 Crib 5 con tratamiento. BS 5852 part 1. EN 1021-1/2, US Cal. Bull. 117-2013

**Mantenimiento** Consulte los símbolos ISO

### JP

#### 用途 室内装飾用テキスタイル

**組成** ポリアクリル 40%, ポリエステル 27%, ビスコース 18%, 麻 9%, 綿 6%. 幅 140 cm.

重さ 1040 g/lin.m

**テスト** 耐光性 5-6 (ISO 1-8). ピリング 4-5 (ISO 1-5). マーチンデール法により摩擦運動約 70,000 回. 防炎性 BS 5852 part 1, EN 1021-1/2, US Cal. Bull. 117-2013

**お手入れ** 詳細は、ISO 認証をご覧ください

### CN

#### 应用 软装面料

**成分** 聚丙烯, 27% 涤纶, 18% 粘胶纤维, 9% 亚麻, 6% 棉. 幅宽 140 cm. 克重 1040 g/lin.m

**耐磨指数** 耐光性 5-6 (ISO 1-8). 抗起球度 4-5 (ISO 1-5). 马丁代尔法约 70,000 转. 阻燃 BS 5852 part 1, EN 1021-1/2, US Cal. Bull. 117-2013

**维护** 请参阅 ISO 符号



\* Abrasion test results exceeding ACT performance guidelines are not product lifespan. Multiple factors affect fabric durability and appearance retention