

Silvretta Louise Sigvardt

Openness factor 3%
Solar reflection 62%
Metallised woven textile



Specification details

Openness factor	3%
Composition	100% polyester, aluminium backing
Fabric width	Max. 280 cm (110 inches)
Weight	250 g/m ²
Thickness	0.44 mm
IR emissivity metal side	0.32
Light fastness	Interior 7, Exterior 7-8 (ISO105-B02)
Fire tests	EN 13501-1 (B-s1, d0), BS 5867 part 2 type B, GB 8624 B1, DIN 4102 B1, NFPA 701, EN 13773 class 1
Environment	GREENGUARD Gold, STANDARD 100 Class IV by OEKO-TEX®, Environmental Product Declaration (EPD), Health Product Declaration (HPD). Comply with REACH and RoHS2. Halogen free, Phthalate free, Formaldehyde free, Antimicrobials free, PVC free.
View through rate	Black: Excellent visibility / All other colours: Good visibility (according to ITA RWTH Aachen University)

Technical details

Colour	Optical properties acc. to EN 14500:2021 and EN 14501:2021					
	Rs (%)	Ts (%)	Tv (%)	Tuv (%)	Ra	Glare control rating
110	62	7	7	5	99	2
130	62	6	6	4	98	3
140	62	5	5	4	99	3
160	62	4	4	4	99	3
190	62	6	4	4	99	3
220	62	6	6	4	96	3
430	62	6	6	4	92	3
530	62	6	5	4	89	3

Colour	Solar control double glazing G			Solar control triple glazing I		
	gtot/SHGC (%)	Utot-value (W/m ² K)	Tv, tot (%)	gtot/SHGC (%)	Utot-value (W/m ² K)	Tv, tot (%)
110	16	0.76	6	17	0.51	5
130	16	0.76	5	17	0.51	4
140	16	0.76	4	17	0.51	4
160	16	0.76	3	17	0.51	3
190	16	0.76	3	17	0.51	3
220	16	0.76	5	17	0.51	5
430	16	0.76	5	17	0.51	5
530	16	0.76	4	17	0.51	4

Rs: Solar reflection | **Ts:** Solar transmission | **As:** Solar absorption calculation: $100 - Rs - Ts = As$

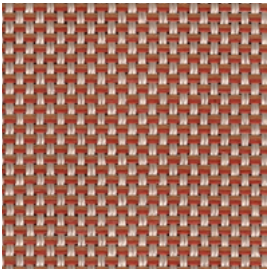
Tv: Visual light transmission | **Tuv:** UV transmission | **Ra:** Colour rendering index

Glazing G: $g=33\%$ / $U=1.0$ / $Tv=70\%$ (acc. to EN14501: 2021) | **Glazing I:** $g=31\%$ / $U=0.6$ / $Tv=64\%$ (with ref. panes acc. to EN 14501:2021)

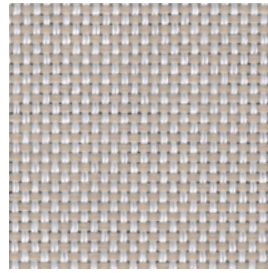
gtot/SHGC: Solar heat gain through total fenestration | **Utot:** Thermal heat loss (or gain) through total fenestration

Tv, tot: Total light transmission through total fenestration

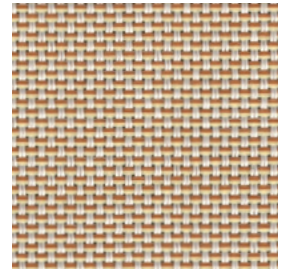
Silvretta



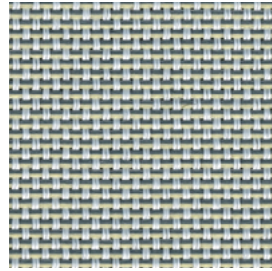
530



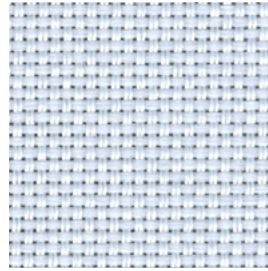
220



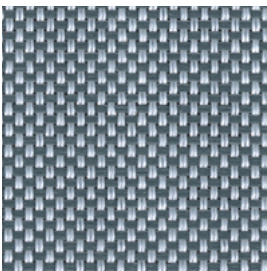
430



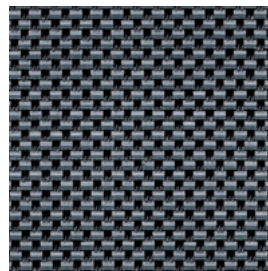
130



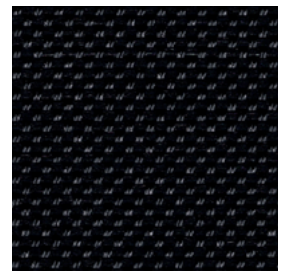
110



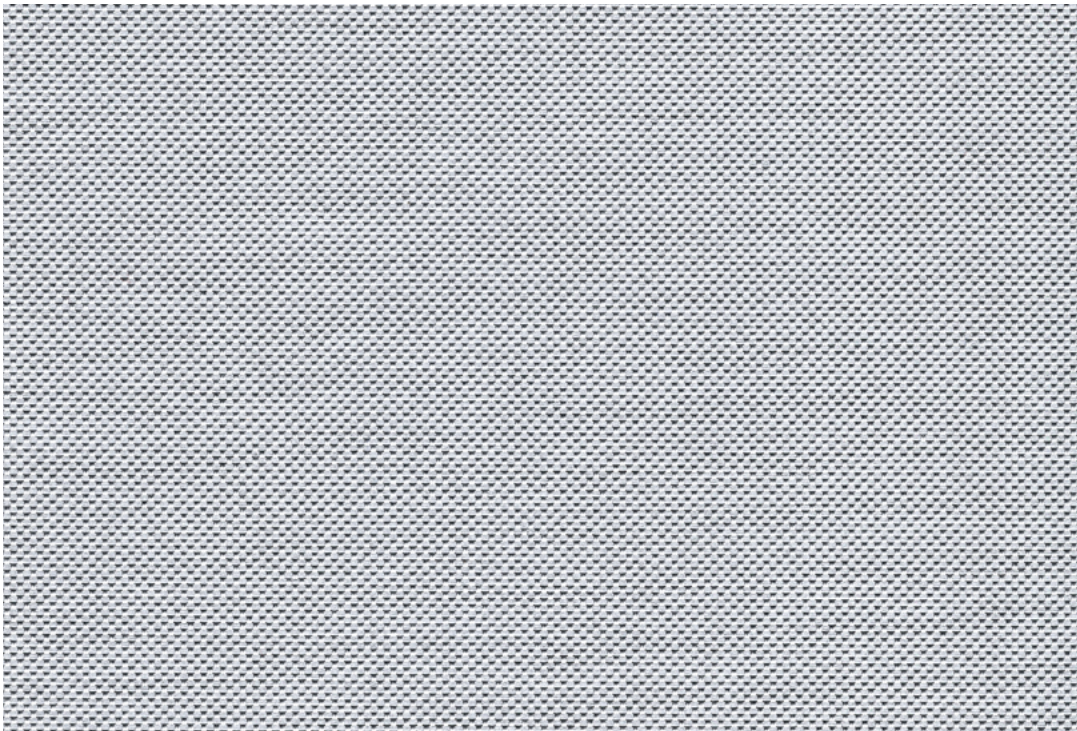
140



160



190



Silvretta

Design: Louise Sigvardt

DK

Anvendelse Rullegardin.

Beskrivelse 100% polyester. Alubelægning. Bredde max. 280 cm. Vægt 250 g/m².

Tykkelse 0.44 mm. Garnfarvet.

Nuanceforskelle kan forekomme.

Lysægtighed Interiør 7. Udvendigt 7-8 (ISO 105-B02).

Flammesikring EN 13501-1 (B-s1, d0), BS 5867 part 2 type B, GB 8624 B1, DIN 4102 B1, NFPA 701, EN 13773 class 1. (Kopi af testrapport kan rekvireres).

Vedligeholdelse Se ISO symboler. Kan børstes eller støvsuges (nedsat sug) med børstemundstykke. Ved kraftigere tilsmudsning anbefales det at kontakte et professionelt renseri.

UK

Application Roller blind.

Description 100% polyester. Aluminium backing. Width max. 280 cm (110 inches).

Weight 250 g/m². Thickness 0.44 mm.

Yarn dyed. Colour differences may occur.

Lightfastness Interior 7. Exterior 7-8. (ISO 105-B02)

Flame resistance EN 13501-1 (B-s1, d0), BS 5867 part 2 type B, GB 8624 B1, DIN 4102 B1, NFPA 701, EN 13773 class 1. (Copy of test report available).

Care See ISO symbols. Can be brushed or carefully vacuumed (reduced suction power) with a brush nozzle. In case of considerable staining, we recommend contacting a professional dry cleaner.

DE

Anwendungsbereich Rollos.

Beschreibung 100% Polyester.

Alubedampft. Breite max. 280 cm. Gewicht 250 g/m². Dicke 0.44 mm. Garngefärbt.

Farbunterschiede können vorkommen.

Lichtechtheit Innen 7. Äußeres 7-8. (ISO 105-B02)

Flammschutz EN 13501-1 (B-s1, d0), BS 5867 part 2 type B, GB 8624 B1, DIN 4102 B1, NFPA 701, EN 13773 class 1. (Testbericht verfügbar).

Pflege Siehe ISO Pflegesymbole. Reinigung durch vorsichtiges Abbürsten oder saugen mit Bürstenaufsatz und reduzierter Leistung möglich. Bei starker Verschmutzung empfehlen wir einen professionellen Reinigungsdienst.

NL

Toepassing Rolgordijn.

Omschrijving 100% polyester. Aluminium backing. Breedte max. 280 cm. Gewicht 250 g/m². Dikte 0.44 mm. Garengerfvd.

Kleurverschillen kunnen optreden.

Lichtechtheid Interieur 7. Exterieur 7-8. (ISO 105-B02)

Brandwerendheid EN 13501-1 (B-s1, d0), BS 5867 part 2 type B, GB 8624 B1, DIN 4102 B1, NFPA 701, EN 13773 class 1. (Op aanvraag sturen wij u graag een kopie van het testrapport).

Onderhoud Zie de ISO symbolen. Kan schoongemaakt worden door middel van een borstel of een stofzuiger met borstelstuk op halve kracht. In het geval van serieuze vlekvorming, raden we aan contact op te nemen met een professionele reiniger.

FR

Domaine d'utilisation Store.

Description 100% polyester. Enduit aluminium.

Largeur max. 280 cm. Poids 250 g/m².

Épaisseur 0.44 mm. Teinture sur fil.

Écart des coloris possibles.

Résistance à la lumière Intérieur 7.

Extérieur 7-8. (ISO 105-B02)

Normes au feu EN 13501-1 (B-s1, d0), BS 5867 part 2 type B, GB 8624 B1, DIN 4102 B1, NFPA 701, EN 13773 class 1. (La copie du compte rendu des tests est disponible sur demande).

Entretien Voir les symboles ISO. Le tissu peut être brossé ou aspiré avec soin (puissance d'aspiration réduite) avec un embout en forme de brosse. Dans le cas où le tissu a été fortement taché, nous suggérons de contacter un pressing professionnel.

IT

Destinazione d'uso Tende a rullo.

Caratteristiche 100% poliestere. Rifinito sul retro con alu. Altezza max. 280 cm.

Peso 250 g/m². Spessore 0.44 mm. Tinto in filo.

Possibili differenze per colore.

Resistenza alla luce Interno 7. Esterno 7-8. (ISO 105-B02)

Ignifugazione EN 13501-1 (B-s1, d0), BS 5867 part 2 type B, GB 8624 B1, DIN 4102 B1, NFPA 701, EN 13773 class 1. (Disponibile copia del test).

Manutenzione Per favore seguire simboli ISO. Può essere spazzolato oppure accuratamente aspirato (ridurre la potenza di aspirazione) con un ugello a spazzola. In caso di macchie considerevoli, si consiglia di contattare un lavasecco professionale.

ES

Aplicación Estor.

Descripción 100% poliéster. Reverso de aluminio. Anchura max. 280 cm. Peso 250 g/m².

Grosor 0.44 mm. Teñido en hilo.

Posibles variaciones de color.

Resistencia a la luz Interior 7. Exterior 7-8. (ISO 105-B02)

Resistencia al fuego EN 13501-1 (B-s1, d0), BS 5867 part 2 type B, GB 8624 B1, DIN 4102 B1, NFPA 701, EN 13773 class 1. (Copia del informe de ensayos disponible).

Limpieza Consulte los símbolos ISO. Se puede cepillar o aspirar con cuidado (baja intensidad de succión) con una boquilla de cepillo. En caso de manchas considerables, recomendamos contactar con un profesional de limpieza.

SE

Användning Rullgardin.

Beskrivning 100% polyester.

Aluminiumbaksida. Bredd max. 280 cm.

Vikt 250 g/m². Tjocklek 0.44 mm. Garnfärgad.

Viss nyansskillnad kan förekomma.

Ljushållighet Interiör 7. Exteriör 7-8. (ISO 105-B02)

Flammskydd EN 13501-1 (B-s1, d0), BS 5867 part 2 type B, GB 8624 B1, DIN 4102 B1, NFPA 701, EN 13773 class 1. (Kopia av testrapport finns tillgänglig vid förfrågan).

Underhåll Se ISO symboler. Kan borstas eller försiktigt dammsugas med ett borstmunstycke. I händelse av fläckar rekommenderar vi att du lämnar in rullgardinen till kemtvätt.

ZH

产品应用 遮光卷帘。

产品详情 100% 聚酯纤维。铝涂层背膜。幅宽：最宽280厘米。克重：250克/平方米。厚度：0.44毫米。色织。可能出现色差。

日晒色牢度 内层：7。外层：7-8 (ISO 105-B02)。

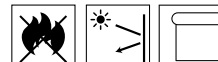
阻燃级别 欧洲标准EN 13501-1 (B-s1, d0)，英国标准BS 5867 第2部分 B级，中国标准GB 8624 B1，德国标准DIN 4102 B1，美国标准NFPA 701，欧洲标准EN 13773 1级。（可提供检测报告副本）。

保养须知 请参照ISO标识。可用毛刷或毛刷吸嘴（减少吸力）小心清理。如脏污较严重，建议联系专业干洗服务。

。保养须知 请参照ISO标识。可用毛刷或毛刷吸嘴（减少吸力）小心清理。如脏污较严重，建议联系专业干洗服务。



Contact and further information kvadrat.dk



5 year warranty

Louise Sigvardt

Louise Sigvardt is a graduate of the acclaimed Kolding Design School in Denmark where she studied fashion design. Sigvardt's design process begins with a story, a feeling, place, or a graphic expression. She then evolves and translates these into patterns and colours and, finally, a finished design.

Silvretta

Silvretta by Louise Sigvardt is a woven, yarn-dyed textile made from 3 differently coloured yarns. Despite the complexity of the metallised textile's innovative, precise weave, it has a rich and very natural expression. The composition of coloured yarns gives a deep and interesting colour appearance both from far and close by. Silvretta has a good view out and delivers control over glare, thereby reducing the need for cooling systems and the associated energy consumption.