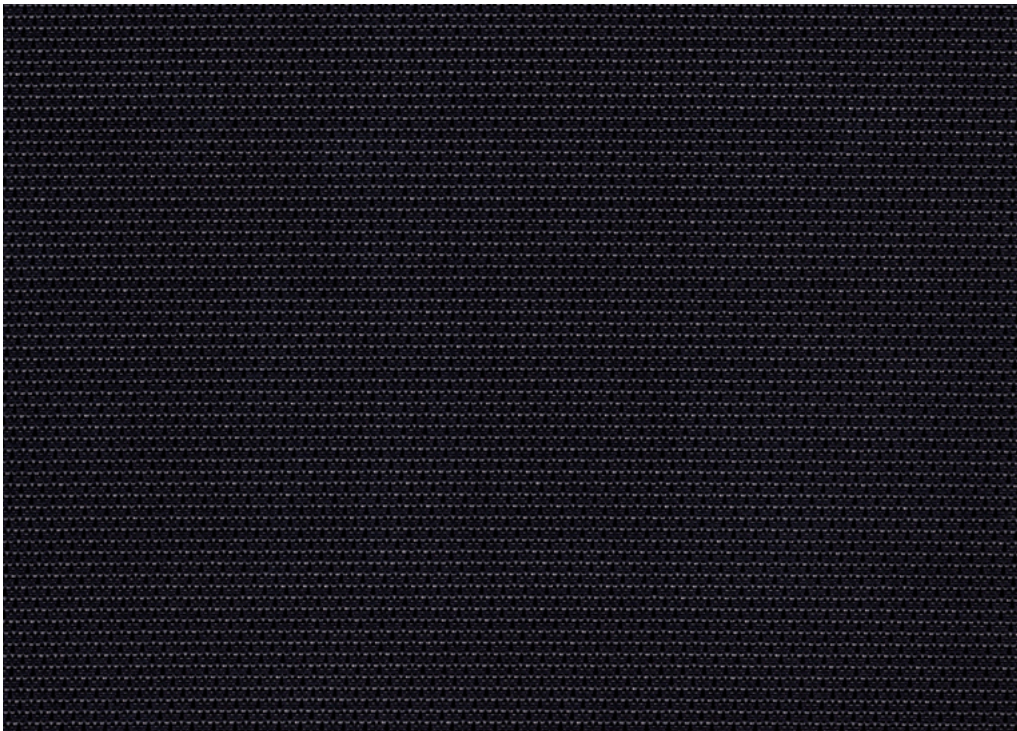


# Clearview Alfredo Häberli

Openness factor 3%  
Solar reflection 74%  
Excellent view through



## Specification details

Openness factor	3%
Composition	100% polyester, aluminium backing
Fabric width	Max. 275 cm (108 inches)
Weight	210 g/m <sup>2</sup>
Thickness	0.41 mm
IR emissivity metal side	0.21
Light fastness	Interior 3-7, Exterior 7-8 (ISO105-B02)
Fire tests	EN 13501-1 (B-s1, d0), BS 5867 part 2 type B, GB 8624 B1, DIN 4102 B1, NFPA 701
Environment	GREENGUARD Gold, STANDARD 100 Class IV by OEKO-TEX®, Environmental Product Declaration (EPD), Health Product Declaration (HPD). Comply with REACH and RoHS2. Halogen free, Phthalate free, Formaldehyde free, Antimicrobials free, PVC free.
View through rate	Excellent visibility (according to ITA RWTH Aachen University)

## Technical details

Colour	Optical properties acc. to EN 14500:2021 and EN 14501:2021					
	Rs (%)	Ts (%)	Tv (%)	Tuv (%)	Ra	Glare control rating
100	74	4	4	4	99	3
120	74	4	4	4	99	3
150	74	4	3	3	99	3
170	74	4	3	3	99	3
180	74	4	3	3	99	3
190	74	4	3	3	99	3
210	74	4	4	4	99	3
230	74	4	4	3	99	3

Colour	Solar control double glazing G			Solar control triple glazing I		
	gtot/SHGC (%)	Utot-value (W/m <sup>2</sup> K)	Tv, tot (%)	gtot/SHGC (%)	Utot-value (W/m <sup>2</sup> K)	Tv, tot (%)
100	12	0.73	4	14	0.50	4
120	12	0.73	4	14	0.50	3
150	12	0.73	3	14	0.50	3
170	12	0.73	3	14	0.50	3
180	12	0.73	3	14	0.50	3
190	12	0.73	2	14	0.50	2
210	12	0.73	3	14	0.50	3
230	12	0.73	3	14	0.50	3

**Rs:** Solar reflection | **Ts:** Solar transmission | **As:** Solar absorption calculation:  $100 - Rs - Ts = As$

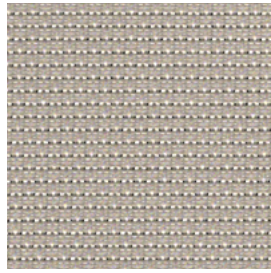
**Tv:** Visual light transmission | **Tuv:** UV transmission | **Ra:** Colour rendering index

**Glazing G:**  $g=33\%$  /  $U=1.0$  /  $Tv=70\%$  (acc. to EN14501: 2021) | **Glazing I:**  $g=31\%$  /  $U=0.6$  /  $Tv=64\%$  (with ref. panes acc. to EN 14501:2021)

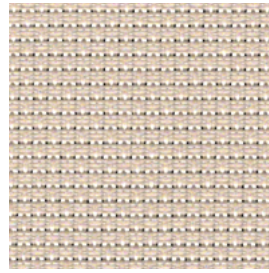
**gtot/SHGC:** Solar heat gain through total fenestration | **Utot:** Thermal heat loss (or gain) through total fenestration

**Tv, tot:** Total light transmission through total fenestration

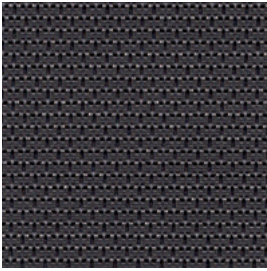
# Clearview



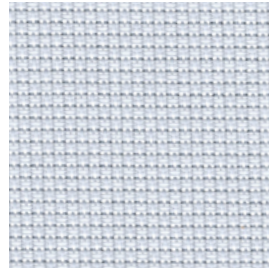
230



210



170



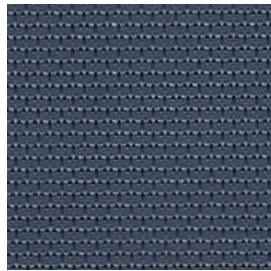
100



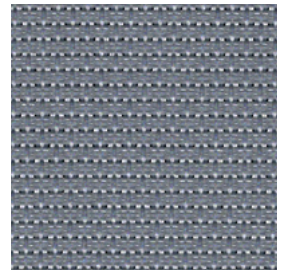
120



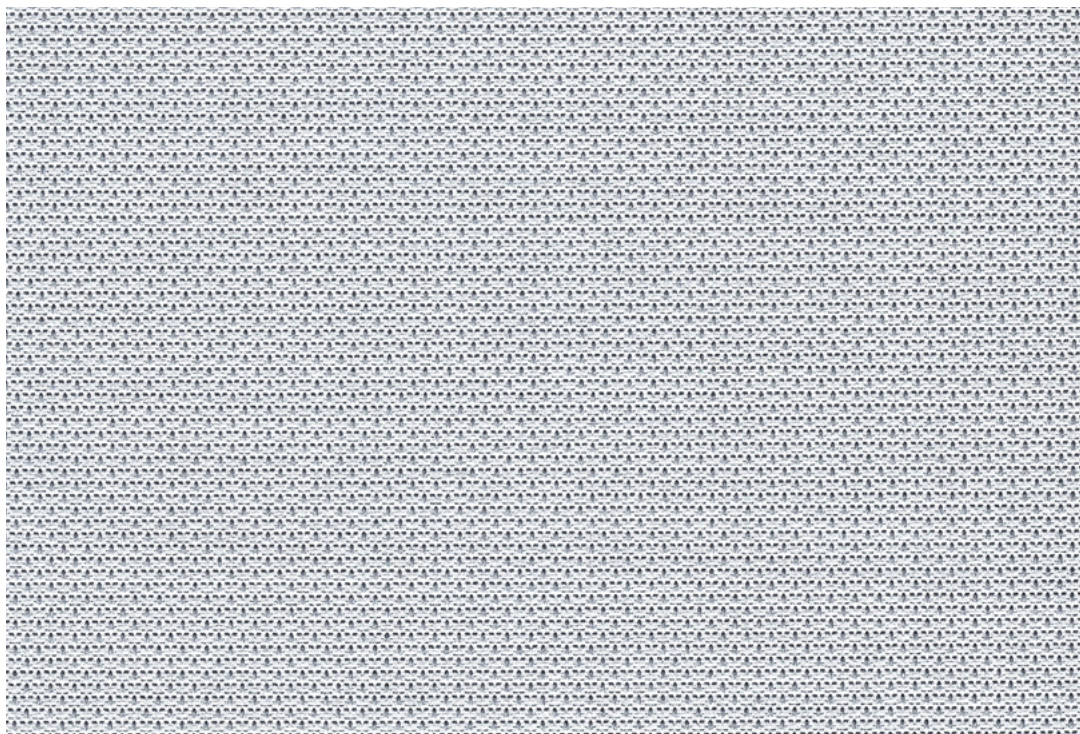
190



180



150



## Clearview

Design: Alfredo Häberli

DK

**Anvendelse** Rullegardin.

**Beskrivelse** 100% polyester. Alubelægning. Bredde max. 275 cm. Vægt 210 g/m<sup>2</sup>. Tykkelse 0.41 mm. Transfer tryk. Nuanceforskell kan forekomme.

**Lysægtighed** Interiør 3-7. Udvendig 7-8 (ISO 105-B02).

**Flammesikring** EN 13501-1 (B-s1, d0), BS 5867 part 2 type B, GB 8624 B1, DIN 4102 B1, NFPA 701. (Kopi af testrapport kan rekvireres).

**Vedligeholdelse** Se ISO symboler. Kan børstes eller støvsuges (nedsat sug) med børstemundstykke. Ved kraftigere tilsmudsning anbefales det at kontakte et professionelt renseri.

UK

**Application** Roller blind.

**Description** 100% polyester. Aluminium backing. Width max. 275 cm (108 inches). Weight 210 g/m<sup>2</sup>. Thickness 0.41 mm. Transfer print. Colour differences may occur.

**Lightfastness** Interior 3-7. Exterior 7-8 (ISO 105-B02).

**Flame resistance** EN 13501-1 (B-s1, d0), BS 5867 part 2 type B, GB 8624 B1, DIN 4102 B1 NFPA 701. (Copy of test report available).

**Care** See ISO symbols. Can be brushed or carefully vacuumed (reduced suction power) with a brush nozzle. In case of considerable staining, we recommend contacting a professional dry cleaner.

DE

**Anwendungsbereich** Rollos.

**Beschreibung** 100% Polyester. Alubedampft. Breite max. 275 cm. Gewicht 210 g/m<sup>2</sup>. Dicke 0.41 mm. Transferdruck. Farbunterschiede können vorkommen.

**Lichtechtheit** Innen 3-7. Äußeres 7-8 (ISO 105-B02).

**Flammschutz** EN 13501-1 (B-s1, d0), BS 5867 part 2 type B, GB 8624 B1, DIN 4102 B1, NFPA 701. (Testbericht verfügbar).

**Pflege** Siehe ISO Pflegesymbole. Reinigung durch vorsichtiges Abbürsten oder saugen mit Bürstenaufsatz und reduzierter Leistung möglich. Bei starker Verschmutzung empfehlen wir einen professionellen Reinigungsdienst.

NL

**Toepassing** Rolgordijn.

**Omschrijving** 100% polyester. Aluminium backing. Breedte max. 275 cm. Gewicht 210 g/m<sup>2</sup>. Dikte 0.41 mm. Transfer print. Kleurverschillen kunnen optreden.

**Lichtechtheid** Interieur 3-7. Extérieur 7-8 (ISO 105-B02).

**Brandwerendheid** EN 13501-1 (B-s1, d0), BS 5867 part 2 type B, GB 8624 B1, DIN 4102 B1, NFPA 701. (Op aanvraag sturen wij u graag een kopie van het testrapport).

**Onderhoud** Zie de ISO symbolen. Kan schoongemaakt worden door middel van een borstel of een stofzuiger met borstelstuk op halve kracht. In het geval van serieuze vlekvorming, raden we aan contact op te nemen met een professionele reiniger.

FR

**Domaine d'utilisation** Store.

**Description** 100% polyester. Enduit aluminium. Largeur max. 275 cm. Poids 210 g/m<sup>2</sup>. Épaisseur 0.41 mm. Impression par transfert. Ecart des coloris possibles.

**Résistance à la lumière** Intérieur 3-7. Extérieur 7-8 (ISO 105-B02).

**Normes au feu** EN 13501-1 (B-s1, d0), BS 5867 part 2 type B, GB 8624 B1, DIN 4102 B1, NFPA 701. (La copie du compte rendu des tests est disponible sur demande).

**Entretien** Voir les symboles ISO. Le tissu peut être brossé ou aspiré avec soin (puissance d'aspiration réduite) avec un embout en forme de brosse. Dans le cas où le tissu a été fortement taché, nous suggérons de contacter un pressing professionnel.

IT

**Destinazione d'uso** Tende a rullo.

**Caratteristiche** 100% poliestere. Rifinito sul retro con alu. Altezza max. 275 cm. Peso 210 g/m<sup>2</sup>. Spessore 0.41 mm. Transfer print. Possibili differenze per colore.

**Resistenza alla luce** Interno 3-7. Esterno 7-8 (ISO 105-B02).

**Ignifugazione** EN 13501-1 (B-s1, d0), BS 5867 part 2 type B, GB 8624 B1, DIN 4102 B1, NFPA 701. (Disponibile copia del test).

**Manutenzione** Per favore seguire simboli ISO. Può essere spazzolato oppure accuratamente aspirato (ridurre la potenza di aspirazione) con un ugello a spazzola. In caso di macchie considerevoli, si consiglia di contattare un lavasecco professionale.

ES

**Aplicación** Estor.

**Descripción** 100% poliéster. Reverso de aluminio. Anchura max. 275 cm. Peso 210 g/m<sup>2</sup>. Grosor 0.41 mm. Impresión digital textil. Posibles variaciones de color.

**Resistencia a la luz** Interior 3-7. Exterior 7-8 (ISO 105-B02).

**Resistencia al fuego** EN 13501-1 (B-s1, d0), BS 5867 part 2 type B, GB 8624 B1, DIN 4102 B1, NFPA 701. (Copia del informe de ensayos disponible).

**Limpieza** Consulte los símbolos ISO. Se puede cepillar o aspirar con cuidado (baja intensidad de succión) con una boquilla de cepillo. En caso de manchas considerables, recomendamos contactar con un profesional de limpieza.

SE

**Användning** Rullgardin.

**Beskrivning** 100% polyester. Aluminiumbaksida. Bredd max. 275 cm. Vikt 210 g/m<sup>2</sup>. Tjocklek 0.41 mm. Transfertryck. Viss nyansskillnad kan förekomma.

**Ljushärdighet** Interiör 3-7. Exteriör 7-8. (ISO 105-B02).

**Flammskydd** EN 13501-1 (B-s1, d0), BS 5867 part 2 type B, GB 8624 B1, DIN 4102 B1, NFPA 701.

(Kopia av testrapport finns tillgänglig vid förfrågan).

**Underhåll** Se ISO symboler. Kan borstas eller försiktigt dammsugas med ett borstmunstycke. I händelse av fläckar rekommenderar vi att du lämnar in rullgardinen till kemtvätt.

ZH

产品应用 遮阳卷帘。

产品详情 100% 聚酯纤维。铝涂层背膜。幅宽：最宽275厘米。克重：210克/平方米。厚度：0.41毫米。转印。可能出现色差。

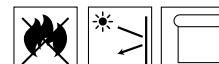
日晒色牢度 内层：3-7。外层：7-8 (ISO 105-B02)。

阻燃级别 欧洲标准EN 13501-1 (B-s1, d0)，英国标准BS 5867 第2部分B级，中国标准GB 8624 B1。德国标准DIN 4102 B1，美国标准NFPA 701。（可提供检测报告副本）。

保养须知 请参照ISO标识。可用毛刷或毛刷吸嘴（减少吸力）小心清理。如脏污较严重，建议联系专业干洗服务。



Contact and further information kvadrat.dk



5 year warranty

**Alfredo Häberli**

Alfredo Häberli was born in Buenos Aires, Argentina, in 1964. He moved to Switzerland in 1977 where he completed his training as industrial designer at Höhere Schule für Gestaltung in Zürich in 1991.

He started his own studio in 1991 and today boasts a versatile portfolio comprising exhibition concepts and design of industrially produced everyday articles and even architectural projects and technically sophisticated pieces of furniture.

**Clearview**

Clearview by Alfredo Häberli offers an intricate woven structure and a sophisticated character. The highly technical, precise composition emphasizes the outstanding performance of the metallised textile. The construction is engineered to give a particularly perfect view out and the highest level of solar reflectance, offering an excellent balance of visual and thermal comfort. As a result, it provides superior control over thermal comfort while reducing the need for cooling and heating systems and the associated energy consumption.