

Tender specification

Loa

Colour 108

Design: Ronan and Erwan Bouroullec



Product description

Loa by Ronan and Erwan Bouroullec is constructed with thick slub yarns, which gives the fabric a rich, natural, linen-like expression. The open structure provides clear views of the outside. Loa is woven with up to three solid yarn colours and include both subtle naturals and rich contrast colours.

Application: Roller blind

Composition: 100% Trevira CS

Openness factor: 17%

Width: 300 cm (118 inches)

Weight: 210 g/m²

Thickness: 0.7 mm

Warranty

The textile comes with a 5 years product guarantee and complies with all the relevant legislation, regulations and standards. Improper cleaning, outdoor use, treatment with chemically aggressive agents, and external influences (incl. damage, insects, polluted condensation) do not fall within the scope of the warranty.

Care

Please see the ISO symbols. Clean with a dry or moist wrung cloth. Only use clean water. Can also be brushed or carefully vacuumed (reduce suction power) with a brush nozzle. In case of considerable staining, we recommend contacting a professional dry cleaner.

Flame resistance

BS 5867 part 2 type B

DIN 4102 B1

EN 13773 class 1

IMO FTP code 2010: part 7

NF P 92507 M1

NFPA 701

Solar optical properties (EN 14500:2021)

Visual Light Transmission	50%
Solar Reflection	45%
Solar Absorption	5%

Thermal performance

(EN 14501:2021, based on reference glazing G)

G-value (SHGC) in %:	21%
Total Light Transmission	40%
U-value	0.84

Classifications for Visual comfort (EN 14501:2021)

Glare control	Class 0
Visual contact with the outside	Class 2

Lightfastness

5-7 (ISO105-B02)

Sustainability

Certificates:

GREENGUARD Gold

Environmental Product Declaration (EPD)

Health Product Declaration (HPD)

PVC free

REACH-compliant



Tender specification

Loa

Colour 138

Design: Ronan and Erwan Bouroullec



Product description

Loa by Ronan and Erwan Bouroullec is constructed with thick slub yarns, which gives the fabric a rich, natural, linen-like expression. The open structure provides clear views of the outside. Loa is woven with up to three solid yarn colours.

Application: Roller blind

Composition: 100% Trevira CS

Openness factor: 17%

Width: 300 cm (118 inches)

Weight: 210 g/m²

Thickness: 0.7 mm

Warranty

The textile comes with a 5 years product guarantee and complies with all the relevant legislation, regulations and standards. Improper cleaning, outdoor use, treatment with chemically aggressive agents, and external influences (incl. damage, insects, polluted condensation) do not fall within the scope of the warranty.

Care

Use a damp cloth to clean the textile.

Can also be brushed or carefully vacuumed (reduced suction power) with a brush nozzle. In case of considerable staining, we recommend contacting a professional dry cleaner.

Flame resistance

BS 5867 part 2 type B

DIN 4102 B1

EN 13773 class 1

IMO FTP code 2010: part 7

NF P 92507 M1

NFPA 701

Solar optical properties (EN 14500:2021)

Visual Light Transmission	41%
Solar Reflection	40%
Solar Absorption	14%

Thermal performance

(EN 14501:2021, based on reference glazing G)

G-value (SHGC) in %:	24%
Total Light Transmission	31%
U-value	0.84

Classifications for Visual comfort (EN 14501:2021)

Glare control	Class 0
Visual contact with the outside	Class 2

Lightfastness

5-7 (ISO105-B02)

Sustainability

Certificates:

GREENGUARD Gold

Environmental Product Declaration (EPD)

Health Product Declaration (HPD)

PVC free

REACH-compliant

kvadrat

High Performance Textiles



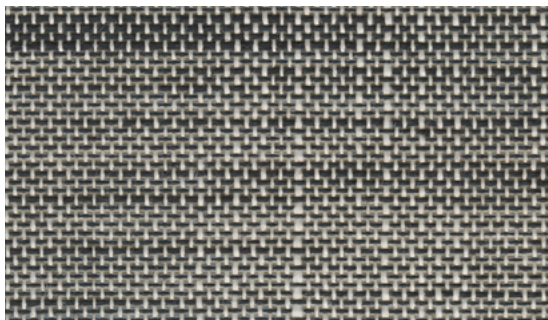
5 year
warranty

Tender specification

Loa

Colour 168

Design: Ronan and Erwan Bouroullec



Product description

Loa by Ronan and Erwan Bouroullec is constructed with thick slub yarns, which gives the fabric a rich, natural, linen-like expression. The open structure provides clear views of the outside. Loa is woven with up to three solid yarn colours.

Application: Roller blind

Composition: 100% Trevira CS

Openness factor: 17%

Width: 300 cm (118 inches)

Weight: 210 g/m²

Thickness: 0.7 mm

Warranty

The textile comes with a 5 years product guarantee and complies with all the relevant legislation, regulations and standards. Improper cleaning, outdoor use, treatment with chemically aggressive agents, and external influences (incl. damage, insects, polluted condensation) do not fall within the scope of the warranty.

Care

Please see the ISO symbols. Clean with a dry or moist wrung cloth. Only use clean water. Can also be brushed or carefully vacuumed (reduce suction power) with a brush nozzle. In case of considerable staining, we recommend contacting a professional dry cleaner.

Flame resistance

BS 5867 part 2 type B

DIN 4102 B1

EN 13773 class 1

IMO FTP code 2010: part 7

NF P 92507 M1

NFPA 701

Solar optical properties (EN 14500:2021)

Visual Light Transmission	30%
Solar Reflection	28%
Solar Absorption	31%

Thermal performance

(EN 14501:2021, based on reference glazing G)

G-value (SHGC) in %:	28%
Total Light Transmission	22%
U-value	0.84

Classifications for Visual comfort (EN 14501:2021)

Glare control	Class 0
Visual contact with the outside	Class 3

Lightfastness

5-7 (ISO105-B02)

Sustainability

Certificates:

GREENGUARD Gold

Environmental Product Declaration (EPD)

Health Product Declaration (HPD)

PVC free

REACH-compliant

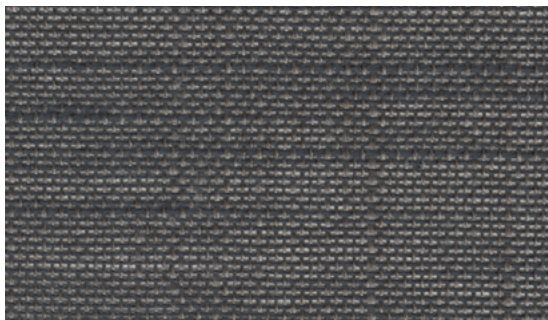


Tender specification

Loa

Colour 188

Design: Ronan and Erwan Bouroullec



Product description

Loa by Ronan and Erwan Bouroullec is constructed with thick slub yarns, which gives the fabric a rich, natural, linen-like expression. The open structure provides clear views of the outside. Loa is woven with up to three solid yarn colours.

Application: Roller blind

Composition: 100% Trevira CS

Openness factor: 17%

Width: 300 cm (118 inches)

Weight: 210 g/m²

Thickness: 0.7 mm

Warranty

The textile comes with a 5 years product guarantee and complies with all the relevant legislation, regulations and standards. Improper cleaning, outdoor use, treatment with chemically aggressive agents, and external influences (incl. damage, insects, polluted condensation) do not fall within the scope of the warranty.

Care

Please see the ISO symbols. Clean with a dry or moist wrung cloth. Only use clean water. Can also be brushed or carefully vacuumed (reduce suction power) with a brush nozzle. In case of considerable staining, we recommend contacting a professional dry cleaner.

Flame resistance

BS 5867 part 2 type B

DIN 4102 B1

EN 13773 class 1

IMO FTP code 2010: part 7

NF P 92507 M1

NFPA 701

Solar optical properties (EN 14500:2021)

Visual Light Transmission 26%

Solar Reflection 24%

Solar Absorption 37%

Thermal performance

(EN 14501:2021, based on reference glazing G)

G-value (SHGC) in %: 30%

Total Light Transmission 18%

U-value 0.84

Classifications for Visual comfort (EN 14501:2021)

Glare control Class 0

Visual contact with the outside Class 3

Lightfastness

5-7 (ISO105-B02)

Sustainability

Certificates:

GREENGUARD Gold

Environmental Product Declaration (EPD)

Health Product Declaration (HPD)

PVC free

REACH-compliant

kvadrat

High Performance Textiles



5 year warranty

Tender specification

Loa

Colour 208

Design: Ronan and Erwan Bouroullec



Product description

Loa by Ronan and Erwan Bouroullec is constructed with thick slub yarns, which gives the fabric a rich, natural, linen-like expression. The open structure provides clear views of the outside. Loa is woven with up to three solid yarn colours.

Application: Roller blind

Composition: 100% Trevira CS

Openness factor: 17%

Width: 300 cm (118 inches)

Weight: 210 g/m²

Thickness: 0.7 mm

Warranty

The textile comes with a 5 years product guarantee and complies with all the relevant legislation, regulations and standards. Improper cleaning, outdoor use, treatment with chemically aggressive agents, and external influences (incl. damage, insects, polluted condensation) do not fall within the scope of the warranty.

Care

Please see the ISO symbols. Clean with a dry or moist wrung cloth. Only use clean water. Can also be brushed or carefully vacuumed (reduce suction power) with a brush nozzle. In case of considerable staining, we recommend contacting a professional dry cleaner.

Flame resistance

BS 5867 part 2 type B

DIN 4102 B1

EN 13773 class 1

IMO FTP code 2010: part 7

NF P 92507 M1

NFPA 701

Solar optical properties (EN 14500:2021)

Visual Light Transmission 49%

Solar Reflection 44%

Solar Absorption 7%

Thermal performance

(EN 14501:2021, based on reference glazing G)

G-value (SHGC) in %: 22%

Total Light Transmission 38%

U-value 0.84

Classifications for Visual comfort (EN 14501:2021)

Glare control Class 0

Visual contact with the outside Class 2

Lightfastness

5-7 (ISO105-B02)

Sustainability

Certificates:

GREENGUARD Gold

Environmental Product Declaration (EPD)

Health Product Declaration (HPD)

PVC free

REACH-compliant



Tender specification

Loa

Colour 238

Design: Ronan and Erwan Bouroullec



Product description

Loa by Ronan and Erwan Bouroullec is constructed with thick slub yarns, which gives the fabric a rich, natural, linen-like expression. The open structure provides clear views of the outside. Loa is woven with up to three solid yarn colours.

Application: Roller blind

Composition: 100% Trevira CS

Openness factor: 17%

Width: 300 cm (118 inches)

Weight: 210 g/m²

Thickness: 0.7 mm

Warranty

The textile comes with a 5 years product guarantee and complies with all the relevant legislation, regulations and standards. Improper cleaning, outdoor use, treatment with chemically aggressive agents, and external influences (incl. damage, insects, polluted condensation) do not fall within the scope of the warranty.

Care

Please see the ISO symbols. Clean with a dry or moist wrung cloth. Only use clean water. Can also be brushed or carefully vacuumed (reduce suction power) with a brush nozzle. In case of considerable staining, we recommend contacting a professional dry cleaner.

Flame resistance

BS 5867 part 2 type B

DIN 4102 B1

EN 13773 class 1

IMO FTP code 2010: part 7

NF P 92507 M1

NFPA 701

Solar optical properties (EN 14500:2021)

Visual Light Transmission	41%
Solar Reflection	37%
Solar Absorption	17%

Thermal performance

(EN 14501:2021, based on reference glazing G)

G-value (SHGC) in %:	25%
Total Light Transmission	32%
U-value	0.84

Classifications for Visual comfort (EN 14501:2021)

Glare control	Class 0
Visual contact with the outside	Class 2

Lightfastness

5-7 (ISO105-B02)

Sustainability

Certificates:

GREENGUARD Gold

Environmental Product Declaration (EPD)

Health Product Declaration (HPD)

PVC free

REACH-compliant



Tender specification

Loa

Colour 788

Design: Ronan and Erwan Bouroullec



Product description

Loa by Ronan and Erwan Bouroullec is constructed with thick slub yarns, which gives the fabric a rich, natural, linen-like expression. The open structure provides clear views of the outside. Loa is woven with up to three solid yarn colours.

Application: Roller blind

Composition: 100% Trevira CS

Openness factor: 17%

Width: 300 cm (118 inches)

Weight: 210 g/m²

Thickness: 0.7 mm

Warranty

The textile comes with a 5 years product guarantee and complies with all the relevant legislation, regulations and standards. Improper cleaning, outdoor use, treatment with chemically aggressive agents, and external influences (incl. damage, insects, polluted condensation) do not fall within the scope of the warranty.

Care

Please see the ISO symbols. Clean with a dry or moist wrung cloth. Only use clean water. Can also be brushed or carefully vacuumed (reduce suction power) with a brush nozzle. In case of considerable staining, we recommend contacting a professional dry cleaner.

Flame resistance

BS 5867 part 2 type B

DIN 4102 B1

EN 13773 class 1

IMO FTP code 2010: part 7

NF P 92507 M1

NFPA 701

Solar optical properties (EN 14500:2021)

Visual Light Transmission	16%
Solar Reflection	24%
Solar Absorption	45%

Thermal performance

(EN 14501:2021, based on reference glazing G)

G-value (SHGC) in %:	30%
Total Light Transmission	11%
U-value	0.84

Classifications for Visual comfort (EN 14501:2021)

Glare control	Class 0
Visual contact with the outside	Class 4

Lightfastness

5-7 (ISO105-B02)

Sustainability

Certificates:

GREENGUARD Gold

Environmental Product Declaration (EPD)

Health Product Declaration (HPD)

PVC free

REACH-compliant

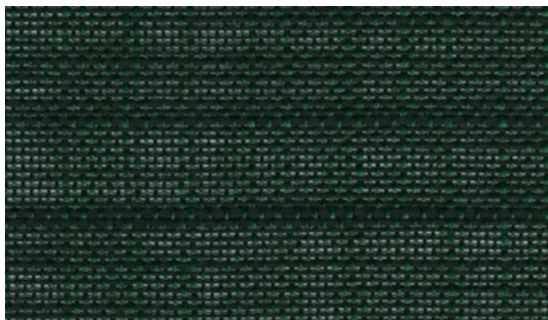


Tender specification

Loa

Colour 988

Design: Ronan and Erwan Bouroullec



Product description

Loa by Ronan and Erwan Bouroullec is constructed with thick slub yarns, which gives the fabric a rich, natural, linen-like expression. The open structure provides clear views of the outside. Loa is woven with up to three solid yarn colours.

Application: Roller blind

Composition: 100% Trevira CS

Openness factor: 17%

Width: 300 cm (118 inches)

Weight: 210 g/m²

Thickness: 0,7 mm

Warranty

The textile comes with a 5 years product guarantee and complies with all the relevant legislation, regulations and standards. Improper cleaning, outdoor use, treatment with chemically aggressive agents, and external influences (incl. damage, insects, polluted condensation) do not fall within the scope of the warranty.

Care

Please see the ISO symbols. Clean with a dry or moist wrung cloth. Only use clean water. Can also be brushed or carefully vacuumed (reduce suction power) with a brush nozzle. In case of considerable staining, we recommend contacting a professional dry cleaner.

Flame resistance

BS 5867 part 2 type B

DIN 4102 B1

EN 13773 class 1

IMO FTP code 2010: part 7

NF P 92507 M1

NFPA 701

Solar optical properties (EN 14500:2021)

Visual Light Transmission	21%
Solar Reflection	22%
Solar Absorption	42%

Thermal performance

(EN 14501:2021, based on reference glazing G)

G-value (SHGC) in %:	30%
Total Light Transmission	15%
U-value	0.84

Classifications for Visual comfort (EN 14501:2021)

Glare control	Class 0
Visual contact with the outside	Class 4

Lightfastness

5-7 (ISO105-B02)

Sustainability

Certificates:

GREENGUARD Gold

Environmental Product Declaration (EPD)

Health Product Declaration (HPD)

PVC free

REACH-compliant

