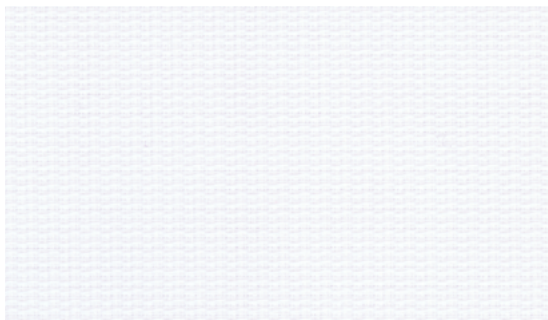


Tender specification

Meru

Colour 105

Design: Louise Sigvardt



Product description

Meru by Louise Sigvardt has a tactile textured weave and comes alive in the light: under close inspection, subtle lines appear to play across its surface. With relatively high transparency it provides views during the day.

Application: Roller blind

Composition: 100% Trevira CS

Openness factor: 2%

Width: 300 cm (118 inches)

Weight: 150 g/m²

Thickness: 0.3 mm

Warranty

The textile comes with a 5 years product guarantee and complies with all the relevant legislation, regulations and standards. Improper cleaning, outdoor use, treatment with chemically aggressive agents, and external influences (incl. damage, insects, polluted condensation) do not fall within the scope of the warranty.

Care

Please see the ISO symbols. Clean with a dry or moist wrung cloth. Only use clean water. Can also be brushed or carefully vacuumed (reduce suction power) with a brush nozzle. In case of considerable staining, we recommend contacting a professional dry cleaner.

Flame resistance

BS 5867 part 2 type B

DIN 4102 B1

EN 13773 class 1

IMO FTP code 2010: part 7

NF P 92 507 M1

NFPA 701

Solar optical properties (EN 14500:2021)

Visual Light Transmission 44%

Solar Reflection 52%

Solar Absorption 3%

Thermal performance

(EN 14501:2021, based on reference glazing G)

G-tot value (SHGC) in %: 19%

Total Light Transmission: 36%

U-tot value 0.84

Classifications for Visual comfort (EN 14501:2021)

Glare control Class 0

Visual contact with the outside Class 0

Lightfastness

4-7 (ISO 105-B02)

Sustainability

Certificates:

GREENGUARD Gold

Environmental Product Declaration (EPD)

Health Product Declaration (HPD)

PVC free

REACH-compliant

kvadrat

High Performance Textiles



5 year warranty

Tender specification

Meru

Colour 145

Design: Louise Sigvardt



Product description

Meru by Louise Sigvardt has a tactile textured weave and comes alive in the light: under close inspection, subtle lines appear to play across its surface. With relatively high transparency it provides views during the day.

Application: Roller blind

Composition: 100% Trevira CS

Openness factor: 2%

Width: 300 cm (118 inches)

Weight: 150 g/m²

Thickness: 0.3 mm

Warranty

The textile comes with a 5 years product guarantee and complies with all the relevant legislation, regulations and standards. Improper cleaning, outdoor use, treatment with chemically aggressive agents, and external influences (incl. damage, insects, polluted condensation) do not fall within the scope of the warranty.

Care

Please see the ISO symbols. Clean with a dry or moist wrung cloth. Only use clean water. Can also be brushed or carefully vacuumed (reduce suction power) with a brush nozzle. In case of considerable staining, we recommend contacting a professional dry cleaner.

Flame resistance

BS 5867 part 2 type B

DIN 4102 B1

EN 13773 class 1

IMO FTP code 2010: part 7

NF P 92 507 M1

NFPA 701

Solar optical properties (EN 14500:2021)

Visual Light Transmission	22%
Solar Reflection	40%
Solar Absorption	25%

Thermal performance

(EN 14501:2021, based on reference glazing G)

G-tot value (SHGC) in %:	24%
Total Light Transmission:	17%
U-tot value	0.84

Classifications for Visual comfort (EN 14501:2021)

Glare control	Class 1
Visual contact with the outside	Class 0

Lightfastness

4-7 (ISO 105-B02)

Sustainability

Certificates:

GREENGUARD Gold

Environmental Product Declaration (EPD)

Health Product Declaration (HPD)

PVC free

REACH-compliant

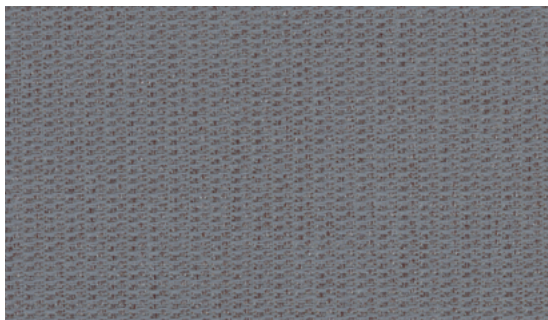


Tender specification

Meru

Colour 155

Design: Louise Sigvardt



Product description

Meru by Louise Sigvardt has a tactile textured weave and comes alive in the light: under close inspection, subtle lines appear to play across its surface. With relatively high transparency it provides views during the day.

Application: Roller blind

Composition: 100% Trevira CS

Openness factor: 2%

Width: 300 cm (118 inches)

Weight: 150 g/m²

Thickness: 0.3 mm

Warranty

The textile comes with a 5 years product guarantee and complies with all the relevant legislation, regulations and standards. Improper cleaning, outdoor use, treatment with chemically aggressive agents, and external influences (incl. damage, insects, polluted condensation) do not fall within the scope of the warranty.

Care

Please see the ISO symbols. Clean with a dry or moist wrung cloth. Only use clean water. Can also be brushed or carefully vacuumed (reduce suction power) with a brush nozzle. In case of considerable staining, we recommend contacting a professional dry cleaner.

Flame resistance

BS 5867 part 2 type B

DIN 4102 B1

EN 13773 class 1

IMO FTP code 2010: part 7

NF P 92 507 M1

NFPA 701

Solar optical properties (EN 14500:2021)

Visual Light Transmission	8%
Solar Reflection	35%
Solar Absorption	40%

Thermal performance

(EN 14501:2021, based on reference glazing G)

G-tot value (SHGC) in %:	27%
Total Light Transmission:	6%
U-tot value	0.84

Classifications for Visual comfort (EN 14501:2021)

Glare control	Class 2
Visual contact with the outside	Class 1

Lightfastness

4-7 (ISO 105-B02)

Sustainability

Certificates:

GREENGUARD Gold

Environmental Product Declaration (EPD)

Health Product Declaration (HPD)

PVC free

REACH-compliant

kvadrat

High Performance Textiles



5 year warranty

Tender specification

Meru

Colour 165

Design: Louise Sigvardt



Product description

Meru by Louise Sigvardt has a tactile textured weave and comes alive in the light: under close inspection, subtle lines appear to play across its surface. With relatively high transparency it provides views during the day.

Application: Roller blind

Composition: 100% Trevira CS

Openness factor: 2%

Width: 300 cm (118 inches)

Weight: 150 g/m²

Thickness: 0.3 mm

Warranty

The textile comes with a 5 years product guarantee and complies with all the relevant legislation, regulations and standards. Improper cleaning, outdoor use, treatment with chemically aggressive agents, and external influences (incl. damage, insects, polluted condensation) do not fall within the scope of the warranty.

Care

Please see the ISO symbols. Clean with a dry or moist wrung cloth. Only use clean water. Can also be brushed or carefully vacuumed (reduce suction power) with a brush nozzle. In case of considerable staining, we recommend contacting a professional dry cleaner.

Flame resistance

BS 5867 part 2 type B

DIN 4102 B1

EN 13773 class 1

IMO FTP code 2010: part 7

NF P 92 507 M1

NFPA 701

Solar optical properties (EN 14500:2021)

Visual Light Transmission	5%
Solar Reflection	33%
Solar Absorption	44%

Thermal performance

(EN 14501:2021, based on reference glazing G)

G-tot value (SHGC) in %:	28%
Total Light Transmission:	3%
U-tot value	0.84

Classifications for Visual comfort (EN 14501:2021)

Glare control	Class 3
Visual contact with the outside	Class 2

Lightfastness

4-7 (ISO 105-B02)

Sustainability

Certificates:

GREENGUARD Gold

Environmental Product Declaration (EPD)

Health Product Declaration (HPD)

PVC free

REACH-compliant

kvadrat

High Performance Textiles



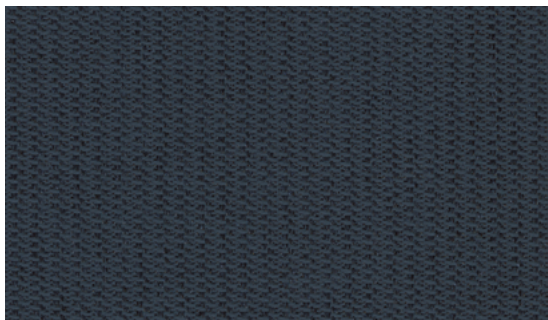
5 year warranty

Tender specification

Meru

Colour 195

Design: Louise Sigvardt



Product description

Meru by Louise Sigvardt has a tactile textured weave and comes alive in the light: under close inspection, subtle lines appear to play across its surface. With relatively high transparency it provides views during the day.

Application: Roller blind

Composition: 100% Trevira CS

Openness factor: 2%

Width: 300 cm (118 inches)

Weight: 150 g/m²

Thickness: 0.3 mm

Warranty

The textile comes with a 5 years product guarantee and complies with all the relevant legislation, regulations and standards. Improper cleaning, outdoor use, treatment with chemically aggressive agents, and external influences (incl. damage, insects, polluted condensation) do not fall within the scope of the warranty.

Care

Please see the ISO symbols. Clean with a dry or moist wrung cloth. Only use clean water. Can also be brushed or carefully vacuumed (reduce suction power) with a brush nozzle. In case of considerable staining, we recommend contacting a professional dry cleaner.

Flame resistance

BS 5867 part 2 type B

DIN 4102 B1

EN 13773 class 1

IMO FTP code 2010: part 7

NF P 92 507 M1

NFPA 701

Solar optical properties (EN 14500:2021)

Visual Light Transmission	3%
Solar Reflection	27%
Solar Absorption	50%

Thermal performance

(EN 14501:2021, based on reference glazing G)

G-tot value (SHGC) in %:	29%
Total Light Transmission:	2%
U-tot value	0.84

Classifications for Visual comfort (EN 14501:2021)

Glare control	Class 3
Visual contact with the outside	Class 2

Lightfastness

4-7 (ISO 105-B02)

Sustainability

Certificates:

GREENGUARD Gold

Environmental Product Declaration (EPD)

Health Product Declaration (HPD)

PVC free

REACH-compliant

kvadrat

High Performance Textiles



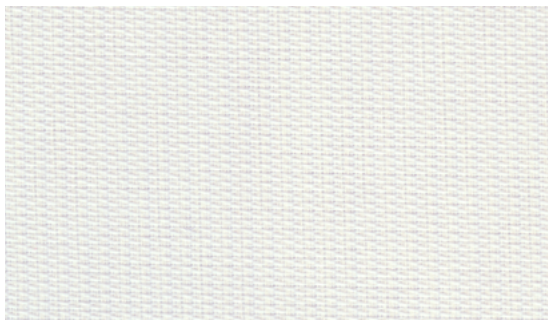
5 year warranty

Tender specification

Meru

Colour 205

Design: Louise Sigvardt



Product description

Meru by Louise Sigvardt has a tactile textured weave and comes alive in the light: under close inspection, subtle lines appear to play across its surface. With relatively high transparency it provides views during the day.

Application: Roller blind

Composition: 100% Trevira CS

Openness factor: 2%

Width: 300 cm (118 inches)

Weight: 150 g/m²

Thickness: 0.3 mm

Warranty

The textile comes with a 5 years product guarantee and complies with all the relevant legislation, regulations and standards. Improper cleaning, outdoor use, treatment with chemically aggressive agents, and external influences (incl. damage, insects, polluted condensation) do not fall within the scope of the warranty.

Care

Please see the ISO symbols. Clean with a dry or moist wrung cloth. Only use clean water. Can also be brushed or carefully vacuumed (reduce suction power) with a brush nozzle. In case of considerable staining, we recommend contacting a professional dry cleaner.

Flame resistance

BS 5867 part 2 type B

DIN 4102 B1

EN 13773 class 1

IMO FTP code 2010: part 7

NF P 92 507 M1

NFPA 701

Solar optical properties (EN 14500:2021)

Visual Light Transmission	45%
Solar Reflection	51%
Solar Absorption	4%

Thermal performance

(EN 14501:2021, based on reference glazing G)

G-tot value (SHGC) in %:	19%
Total Light Transmission:	36%
U-tot value	0.84

Classifications for Visual comfort (EN 14501:2021)

Glare control	Class 0
Visual contact with the outside	Class 0

Lightfastness

4-7 (ISO 105-B02)

Sustainability

Certificates:

GREENGUARD Gold

Environmental Product Declaration (EPD)

Health Product Declaration (HPD)

PVC free

REACH-compliant

kvadrat

High Performance Textiles



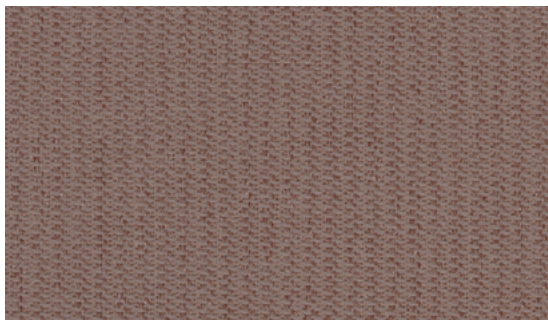
5 year warranty

Tender specification

Meru

Colour 345

Design: Louise Sigvardt



Product description

Meru by Louise Sigvardt has a tactile textured weave and comes alive in the light: under close inspection, subtle lines appear to play across its surface. With relatively high transparency it provides views during the day.

Application: Roller blind

Composition: 100% Trevira CS

Openness factor: 2%

Width: 300 cm (118 inches)

Weight: 150 g/m²

Thickness: 0.3 mm

Warranty

The textile comes with a 5 years product guarantee and complies with all the relevant legislation, regulations and standards. Improper cleaning, outdoor use, treatment with chemically aggressive agents, and external influences (incl. damage, insects, polluted condensation) do not fall within the scope of the warranty.

Care

Please see the ISO symbols. Clean with a dry or moist wrung cloth. Only use clean water. Can also be brushed or carefully vacuumed (reduce suction power) with a brush nozzle. In case of considerable staining, we recommend contacting a professional dry cleaner.

Flame resistance

BS 5867 part 2 type B

DIN 4102 B1

EN 13773 class 1

IMO FTP code 2010: part 7

NF P 92 507 M1

NFPA 701

Solar optical properties (EN 14500:2021)

Visual Light Transmission	7%
Solar Reflection	35%
Solar Absorption	40%

Thermal performance

(EN 14501:2021, based on reference glazing G)

G-tot value (SHGC) in %:	27%
Total Light Transmission:	5%
U-tot value	0.84

Classifications for Visual comfort (EN 14501:2021)

Glare control	Class 2
Visual contact with the outside	Class 1

Lightfastness

4-7 (ISO 105-B02)

Sustainability

Certificates:

GREENGUARD Gold

Environmental Product Declaration (EPD)

Health Product Declaration (HPD)

PVC free

REACH-compliant

