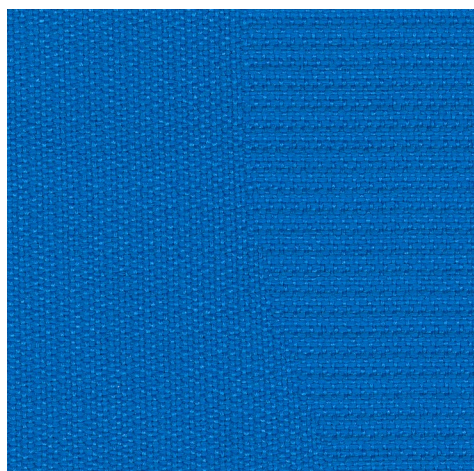


Sone

**kvadrat**

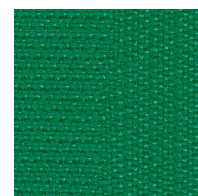
Sone



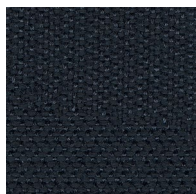
757



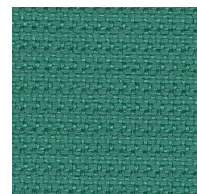
767



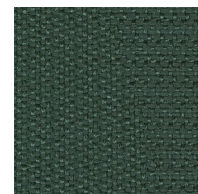
957



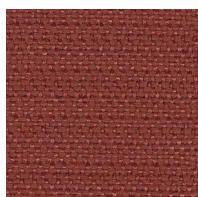
797



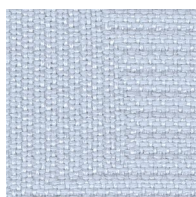
947



977



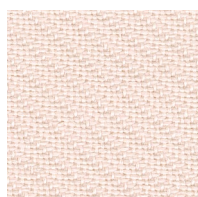
567



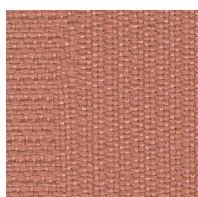
117



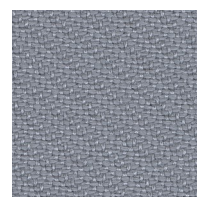
927



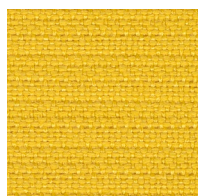
517



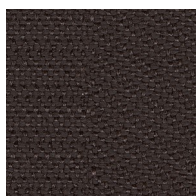
547



137



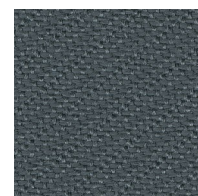
457



397



197



177

04/2023

**Sone**

Designed by Ronan Bouroullec

100% post-consumer recycled polyester

Direction: ↕

Width: approx. 140cm (55")

Abrasion: 40,000 Martindale

**Click here for full Technical Specifications.**

**10**<sup>year</sup>  
warranty

Quality and environmental system accreditation according to ISO 9001 and ISO 14001.

Contact and further information [www.kvadrat.dk](http://www.kvadrat.dk)

**US contact info: 1-800-620-9309**