

Meru Louise Sigvardt

Openness factor 2%
Rich weave screen



kvadrat

Specification details

Openness factor	2%
Composition	100% Trevira CS
Fabric width	300 cm (118 inches)
Weight	150 g/m ²
Thickness	0.3 mm
IR emissivity	0.90
Light fastness	4-7 (ISO105-B02)
Fire tests	BS 5867 part 2 type B, DIN 4102 B1, EN 13773 class 1, IMO FTP code 2010: part 7, NF P 92 507 M1, NFPA 701
Environment	GREENGUARD Gold, Environmental Product Declaration (EPD), Health Product Declaration (HPD). Comply with REACH. PVC free.

Technical details

Colour	Optical properties acc. to EN 14500:2021 and EN 14501:2021					
	Rs (%)	Ts (%)	Tv (%)	Tuv (%)	Ra	Glare control rating
105	52	45	44	32	97	0
145	40	35	22	12	93	1
155	35	25	8	7	89	2
165	33	23	5	5	80	3
195	27	23	3	4	93	3
205	51	45	45	21	96	0
345	35	25	7	3	69	2

Colour	Solar control double glazing G			Solar control triple glazing I		
	gtot/SHGC (%)	Utot-value (W/m ² K)	Tv, tot (%)	gtot/SHGC (%)	Utot-value (W/m ² K)	Tv, tot (%)
105	19	0.84	36	19	0.56	34
145	24	0.84	17	24	0.56	15
155	27	0.84	6	26	0.56	5
165	28	0.84	3	27	0.56	3
195	29	0.84	2	28	0.56	2
205	19	0.84	36	20	0.56	34
345	27	0.84	5	26	0.56	5

Rs: Solar reflection | **Ts:** Solar transmission | **As:** Solar absorption calculation: 100 - Rs - Ts = As

Tv: Visual light transmission | **Tuv:** UV transmission | **Ra:** Colour rendering index

Glazing G: g=33% / U=1.0 / Tv=70% (acc. to EN14501: 2021) | **Glazing I:** g=31% / U=0.6 / Tv=64% (with ref. panes acc. to EN 14501:2021)

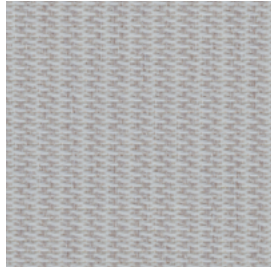
gtot/SHGC: Solar heat gain through total fenestration | **Utot:** Thermal heat loss (or gain) through total fenestration

Tv, tot: Total light transmission through total fenestration

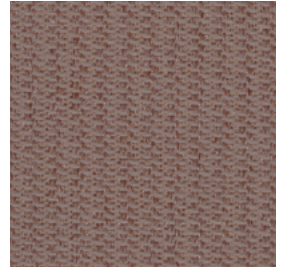
Meru



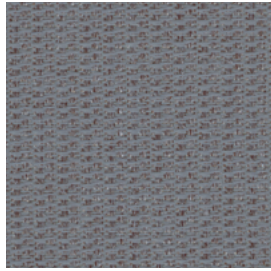
105



145



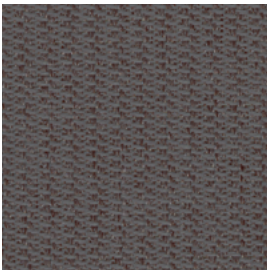
345



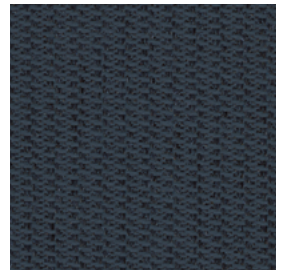
155



205



165



195



Meru

Design: Louise Sigvardt

DK

Anvendelse Rullegardin.

Beskrivelse 100% Trevira CS. Bredde 300 cm. Vægt 150 g/m². Tykkelse 0.3 mm. Stykfarvet. Nuanceforskel kan forekomme.

Lysægtighed 4-7 (ISO105-B02).

Flammesikring BS 5867 part 2 type B. DIN 4102 B1. EN 13 773 class 1. IMO FTP Code 2010 Part 7. NF P 92 507 M1. NFPA 701. (Kopi af testrapport kan rekvireres).

Vedligeholdelse Se ISO symboler. Rengør med en tør eller opvredet klud. Brug kun rent vand. Kan også børstes eller støvsuges (nedsat sug) med børste mundstykke. Ved kraftigere tilsmudsning anbefales det at kontakte professionel renseri.

UK

Application Roller blind.

Description 100% Trevira CS. Width 300 cm (118 inches). Weight 150 g/m². Thickness 0.3 mm.

Piece dyed. Colour differences may occur.

Lightfastness 4-7 (ISO105-B02).

Flame resistance BS 5867 part 2 type B. DIN 4102 B1. EN 13 773 class 1. IMO FTP Code 2010 Part 7. NF P 92 507 M1. NFPA 701. (Copy of test report available).

Care Please see the ISO symbols. Clean with a dry or moist wrung cloth. Only use clean water. Can also be brushed or carefully vacuumed (reduce suction power) with a brush nozzle. In case of considerable staining, we recommend contacting a professional dry cleaner.

DE

Anwendungsbereich Rollos.

Beschreibung 100% Trevira CS. Breite 300 cm. Gewicht 150 g/m². Dicke 0.3 mm. Stückgefärbt. Farbunterschiede können vorkommen.

Lichtechtheit 4-7 (ISO105-B02).

Flammschutz BS 5867 part 2 type B. DIN 4102 B1. EN 13 773 class 1. IMO FTP Code 2010 Part 7. NF P 92 507 M1. NFPA 701. (Testbericht verfügbar).

Pflege Siehe ISO Pflegesymbole. Mit einem trockenen oder feuchten, ausgedrückten Tuch reinigen. Nur sauberes Wasser verwenden. Reinigung durch vorsichtiges Abbürsten oder saugen mit Bürstenaufsatz und reduzierter Leistung möglich. Bei starker Verschmutzung empfehlen wir einen professionellen Reinigungsdienst.

NL

Toepassing Rolgordijn.

Omschrijving 100% Trevira CS. Breedte 300 cm. Gewicht 150 g/m². Dikte 0.3 mm. Gestukverfd. Kleurverschillen kunnen optreden. **Lichtechtheid** 4-7 (ISO105-B02).

Brandwerendheid BS 5867 part 2 type B. DIN 4102 B1. EN 13 773 class 1. IMO FTP Code 2010 Part 7. NF P 92 507 M1. NFPA 701. (Op aanvraag sturen wij u graag een kopie van het testrapport toe).

Onderhoud Zie de ISO symbolen. Schoon deppen met een droge of goed uitgewrongen, vochtige doek. Alleen schoon water gebruiken. Kan ook schoongemaakt worden door middel van een borstel of een stofzuiger met borstelstuk op halve kracht. In het geval van serieuze vlekvorming, raden we aan contact op te nemen met een professionele reiniger.

FR

Domaine d'utilisation Store.

Description 100% Trevira CS. Largeur 300 cm. Poids 150 g/m². Épaisseur 0.3 mm. Teinture à la pièce. Ecart de coloris possibles.

Résistance à la lumière 4-7 (ISO105-B02).

Normes au feu BS 5867 part 2 type B. DIN 4102 B1. EN 13 773 class 1. IMO FTP Code 2010 Part 7. NF P 92 507 M1. NFPA 701. (La copie du compte rendu des tests est disponible sur demande).

Entretien Voir les symboles ISO. Nettoyez avec un chiffon sec ou chiffon humide bien essoré. Utilisez uniquement de l'eau propre. Le tissu peut aussi être brossé ou aspiré avec soin (puissance d'aspiration réduite) avec un embout en forme de brosse. Dans le cas où le tissu a été fortement taché, nous suggérons de contacter un pressing professionnel.

IT

Destinazione d'uso Tende a rullo.

Caratteristiche 100% Trevira CS. Altezza 300 cm. Peso 150 g/m². Spessore 0.3 mm. Tinto in pezza. Possibili differenze per colore.

Resistenza alla luce 4-7 (ISO105-B02).

Ignifugazione BS 5867 part 2 type B. DIN 4102 B1. EN 13 773 class 1. IMO FTP Code 2010 Part 7. NF P 92 507 M1. NFPA 701. (Disponibile copia del test).

Manutenzione Per favore seguire simboli ISO. Pulire con un panno asciutto o umido strizzato. Utilizzare solo acqua pulita. Può anche essere spazzolato oppure accuratamente aspirato (ridurre la potenza di aspirazione) con un ugello a spazzola. In caso di macchie considerevoli, si consiglia di contattare un lavasecco professionale.

ES

Aplicación Estor.

Descripción 100% Trevira CS. Anchura 300 cm. Peso 150 g/m². Grosor 0.3 mm. Teñido en pieza. Posibles variaciones de color.

Resistencia a la luz 4-7 (ISO105-B02).

Resistencia al fuego BS 5867 part 2 type B. DIN 4102 B1. EN 13 773 class 1. IMO FTP Code 2010 Part 7. NF P 92 507 M1. NFPA 701. (Copia del informe de ensayos disponible).

Limpieza Consulte los símbolos ISO. Limpiar con un paño seco o ligeramente humedecido. Utilizar únicamente agua. También se puede cepillar o aspirar con cuidado (baja intensidad de succión) con una boquilla de cepillo. En caso de manchas considerables, recomendamos contactar con un profesional de limpieza.

SE

Användning Rullgardin.

Beskrivning 100% Trevira CS. Bredd 300 cm. Vikt 150 g/m². Tjocklek 0.3 mm. Styckfärgad. Viss nyansskillnad kan förekomma.

Ljushärdighet 4-7 (ISO105-B02).

Flammskydd BS 5867 part 2 type B. DIN 4102 B1. EN 13 773 class 1. IMO FTP Code 2010 Part 7. NF P 92 507 M1. NFPA 701. (Kopia av testrapport finns tillgänglig vid förfrågan).

Underhåll Se ISO symboler. Rengör med en torr eller fuktad trasa. Använd endast rent vatten. Kan även borstas eller försiktigt dammsugas med ett borstmunstycke. I händelse av fläckar rekommenderar vi att du lämnar in rullgardinen till kemtvätt.

ZH

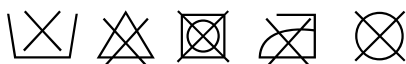
产品应用 遮光卷帘。

产品详情 100% 德国阻燃丝。幅宽：300厘米。克重：150 克/平方米。厚度：0.3 毫米。匹染。可能出现色差。

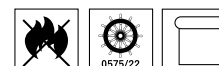
日晒色牢度 4-7 (ISO 105- B02)。

阻燃级别 英国标准BS 5867 第2部分B级，德国标准DIN 4102 B1，欧洲标准EN 13773 1级，国际海事组织标准 IMO FTP Code 2010 第7部分，法国标准NF P 92 507 M1。美国标准NFPA 701。（可提供检测报告副本）。

保养须知 请参照ISO标识。用干布或拧干的湿布清洁。只可用清水。也可用毛刷或毛刷吸嘴（减少吸力）小心清理。如脏污较严重，建议联系专业干洗服务。



Contact and further information kvadrat.dk



5 year warranty

Louise Sigvardt

Louise Sigvardt is a graduate of the acclaimed Kolding Design School in Denmark where she studied fashion design. Sigvardt's design process begins with a story, a feeling, place, or a graphic expression. She then evolves and translates these into patterns and colours and, finally, a finished design.

Meru

Meru by Louise Sigvardt has a tactile textured weave and comes alive in the light: under close inspection, subtle lines appear to play across its surface. With relatively high transparency, it provides views during the day.