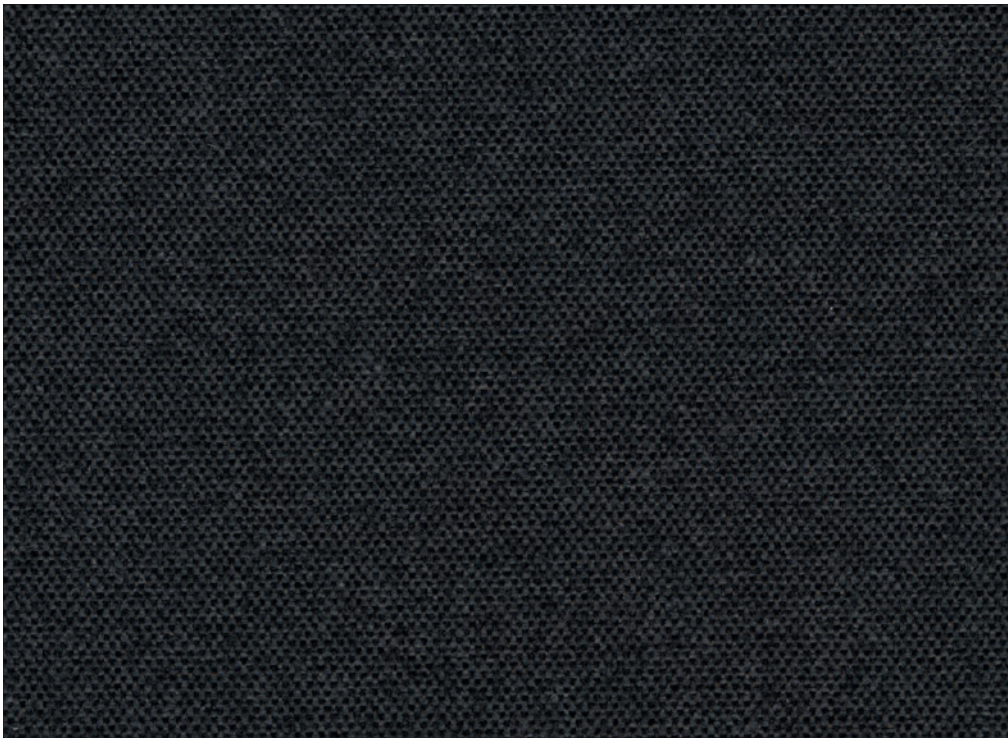


Gonzen Alfredo Häberli

Openness factor 4%
Trevira CS woolen mélange look

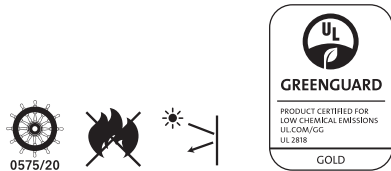


kvadrat shade

Specification details

Openness factor	4%
Composition	100% Trevira CS
Fabric width	300 cm (118 inches)
Weight	180 g/m ²
Thickness	0.65 mm
Fire tests	BS 5867 part 2 type B, DIN 4102 B1, EN 13773 class 1, IMO FTP code 2010: part 7, NF P 92 507 M1, NFPA 701
Light fastness	6-7 (ISO 1-8)
Environment	GREENGUARD Gold Certified, PVC-free, comply with REACH, Environmental Product Declaration (EPD) and Health Product Declaration (HPD) can be provided.

These are approximate values. Individual results may vary slightly.
The technical data are based on average data and are subject to production tolerances.



Technical details

Colour	Optical properties acc. to EN14500: 2008					Based on ref. glazing D acc. to EN14501: 2005		
	Number	Tv (%)	Rs (%)	Ts (%)	As (%)	Glare control rating	gtot/SHGC (%)	U-value (W/m ² K)
100	45	50	45	5	1	23	0,94	31
120	23	28	25	47	0	26	0,94	15
160	12	13	14	73	0	28	0,94	7
190	4	4	4	92	3	29	0,94	2
220	32	47	34	19	1	23	0,94	22
260	14	24	18	58	1	27	0,94	9
560	5	19	12	69	2	27	0,94	3
760	5	14	10	76	2	28	0,94	3

Tv: Visual light transmission

Rs: Solar reflection

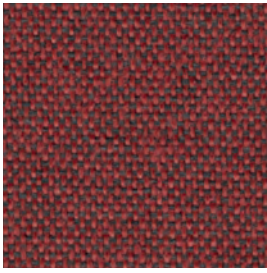
Ts: Solar transmission

As: Solar absorption

gtot/SHGC: Solar heat gain through total fenestration

Glazing D: Solar control double glazing (g=0.32 / U=1.1)

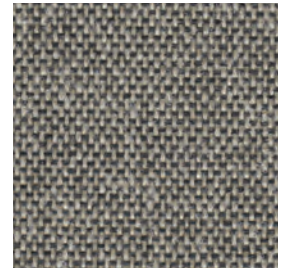
Gonzen



560



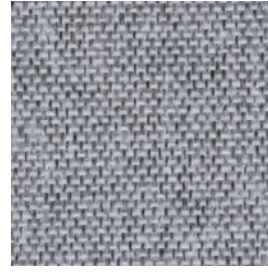
220



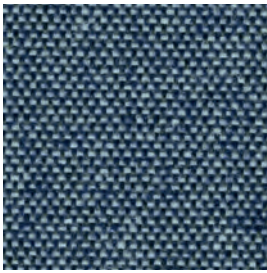
260



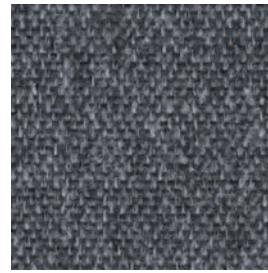
100



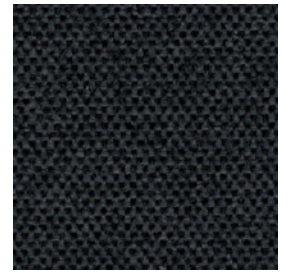
120



760



160



190



Genzen

Design: Alfredo Häberli

DK

Anvendelse Rullegardin.

Beskrivelse 100% Trevira CS. Bredde 300 cm. Vægt 180 g/m². Tykkelse 0.65 mm. Garnfarvet. Nuanceforskel kan forekomme.

Lysægtighed (ISO) 6-7. **Flammesikring:** BS 5867 part 2 type B. DIN 4102 B1. EN 13 773 class 1. IMO FTP Code 2010 Part 7. NF P 92 507 M1. NFPA 701. (Kopi af testrapport kan rekvireres).

Vedligeholdelse Se ISO symboler. Rengør med en tør eller opvredet klud. Brug kun rent vand. Kan også børstes eller støvsuges (nedsat sug) med børste mundstykke. Ved kraftigere tilsmudsning anbefales det at kontakte professionel renseri.

UK

Application Roller blind.

Description 100% Trevira CS. Width 300 cm (118 inches). Weight 180 g/m². Thickness 0.65 mm. Yarn dyed. Colour differences may occur.

Lightfastness (ISO) 6-7. **Flame resistance:** BS 5867 part 2 type B. DIN 4102 B1. EN 13 773 class 1. IMO FTP Code 2010 Part 7. NF P 92 507 M1. NFPA 701. (Copy of test report available).

Care Please see the ISO symbols. Clean with a dry or moist wrung cloth. Only use clean water. Can also be brushed or carefully vacuumed (reduce suction power) with a brush nozzle. In case of considerable staining, we recommend contacting a professional dry cleaner.

DE

Anwendungsbereich Rollos.

Beschreibung 100% Trevira CS. Breite 300 cm. Gewicht 180 g/m². Dicke 0.65 mm. Garngefärbt. Farbunterschiede können vorkommen.

Lichtechtheit (ISO) 6-7. **Flammschutz:** BS 5867 part 2 type B. DIN 4102 B1. EN 13 773 class 1. IMO FTP Code 2010 Part 7. NF P 92 507 M1. NFPA 701. (Testbericht verfügbar).

Pflege Siehe ISO Pflegesymbole. Mit einem trockenen oder feuchten, ausgedrückten Tuch reinigen. Nur sauberes Wasser verwenden. Reinigung durch vorsichtiges Abbürsten oder saugen mit Bürstenaufsatz und reduzierter Leistung möglich. Bei starker Verschmutzung empfehlen wir einen professionellen Reinigungsdienst.

NL

Toepassing Rolgordijn.

Omschrijving 100% Trevira CS. Breedte 300 cm. Gewicht 180 g/m². Dikte 0.65 mm. Garengerfd. Kleurverschillen kunnen optreden.

Lichtechtheid (ISO) 6-7. **Brandwerendheid:** BS 5867 part 2 type B. DIN 4102 B1. EN 13 773 class 1. IMO FTP Code 2010 Part 7. NF P 92 507 M1. NFPA 701. (Op aanvraag sturen wij u graag een kopie van het testrapport toe).

Onderhoud Zie de ISO symbolen. Schoon deppen met een droge of goed uitgewrongen, vochtige doek. Alleen schoon water gebruiken. Kan ook schoongemaakt worden door middel van een borstel of een stofzuiger met borstelstuk op halve kracht. In het geval van serieuze vlekvorming, raden we aan contact op te nemen met een professionele reiniger.

FR

Domaine d'utilisation Store.

Description 100% Trevira CS. Largeur 300 cm. Poids 180 g/m². Épaisseur 0.65 mm. Teinture sur fil. Ecart des coloris possibles.

Résistance à la lumière (ISO) 6-7. **Normes au feu:** BS 5867 part 2 type B. DIN 4102 B1. EN 13 773 class 1. IMO FTP Code 2010 Part 7. NF P 92 507 M1. NFPA 701. (La copie du compte rendu des tests est disponible sur demande).

Entretien Voir les symboles ISO. Nettoyez avec un chiffon sec ou chiffon humide bien essoré. Utilisez uniquement de l'eau propre. Le tissu peut aussi être brossé ou aspire avec soin (puissance d'aspiration réduite) avec un embout en forme de brosse. Dans le cas où le tissu a été fortement taché, nous suggérons de contacter un pressing professionnel.

IT

Destinazione d'uso Tende a rullo.

Caratteristiche 100% Trevira CS. Altezza 300 cm. Peso 180 g/m². Spessore 0.65 mm. Tinto in filo. Possibili differenze per colore.

Resistenza alla luce (ISO) 6-7. **Ignifugazione:** BS 5867 part 2 type B. DIN 4102 B1. EN 13 773 class 1. IMO FTP Code 2010 Part 7. NF P 92 507 M1. NFPA 701. (Disponibile copia del test).

Manutenzione Per favore seguire simboli ISO. Pulire con un panno asciutto o umido strizzato. Utilizzare solo acqua pulita. Può anche essere spazzolato oppure accuratamente aspirato (ridurre la potenza di aspirazione) con un ugello a spazzola. In caso di macchie considerevoli, si consiglia di contattare un lavasecco professionale.

ES

Aplicación Estor.

Descripción 100% Trevira CS. Anchura 300 cm. Peso 180 g/m². Grosor 0.65 mm. Teñido en hilado. Posibles variaciones de color.

Resistencia a la luz (ISO) 6-7. **Resistencia al fuego:** BS 5867 part 2 type B. DIN 4102 B1. EN 13 773 class 1. IMO FTP Code 2010 Part 7. NF P 92 507 M1. NFPA 701. (Copia del informe de ensayos disponible).

Limpieza Consulte los símbolos ISO. Limpiar con un paño seco o ligeramente humedecido. Utilizar únicamente agua. También se puede cepillar o aspirar con cuidado (baja intensidad de succión) con una boquilla de cepillo. En caso de manchas considerables, recomendamos contactar con un profesional de limpieza.

SE

Användning Rullgardin.

Beskrivning 100% Trevira CS. Bredd 300 cm. Vikt 180 g/m². Tjocklek 0.65 mm. Garnfärgad. Viss nyansskillnad kan förekomma.

Ljushärdighet (ISO) 6-7. **Flammskydd** BS 5867 part 2 type B. DIN 4102 B1. EN 13 773 class 1. IMO FTP Code 2010 Part 7. NF P 92 507 M1. NFPA 701. (Kopia av testrapport finns tillgänglig vid förfrågan).

Underhåll Se ISO symboler. Rengör med en torr eller fuktad trasa. Använd endast rent vatten. Kan även borstas eller försiktigt dammsugas med ett borstmunstycke. I händelse av fläckar rekommenderar vi att du lämnar in rullgardinen till kemtvätt.



5 year warranty

Alfredo Häberli

Alfredo Häberli was born in Buenos Aires, Argentina, in 1964. He moved to Switzerland in 1977 where he completed his training as industrial designer at Höhere Schule für Gestaltung in Zürich in 1991.

He started his own studio in 1991 and today boasts a versatile portfolio comprising exhibition concepts and design of industrially produced everyday articles and even architectural projects and technically sophisticated pieces of furniture.

Gonzen

Gonzen by Alfredo Häberli has a sophisticated woollen expression, reminiscent of fine tailoring. It offers a semi-open view outside and gives warm atmosphere to the room. Colours range from neutrals to warm and indigo tones.