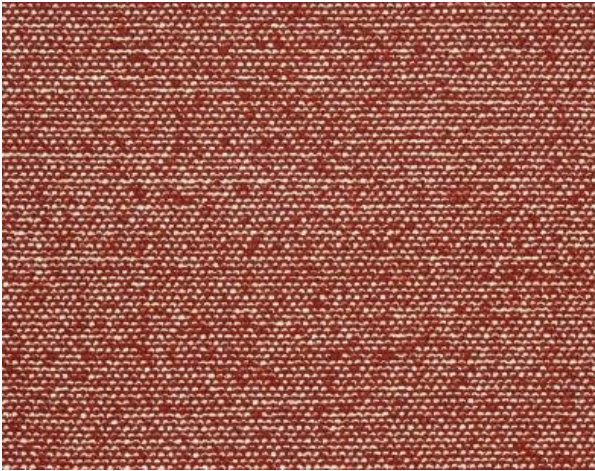


# SAHCO

1831



## Safire

Type: Upholstery

Composition: 43% viscose, 17% polyacrylic, 15% wool,  
9% cotton, 8% linen, 8% polyester

Yarn type: Staple / Filament

Binding: Plain

Width: Approx. 140 cm, 55 inches

Weight: Approx. 1010 g/lin.m, 25 oz/ly

Repeat: none

Colour difference may occur

Cleaning: Vacuum clean frequently, ideally every week.

Remove stains as soon as they occur, with clean warm water  
or sparkling water. Extraction clean when necessary.

Extraction cleaning might dissolve water based glue. Pay  
attention to temperature and amount of cleaning fluid.

Disinfection, see [www.kvadrat.dk/en/sahco](http://www.kvadrat.dk/en/sahco)



10<sup>year</sup>  
warranty



## Abrasion

Approx. 40.000 Martindale rubs, EN ISO 12947

*Abrasion test results exceeding ACT performance  
guidelines are not an indicator of product lifespan. Multiple  
factors affect fabric durability and appearance retention*

## Pilling

Note 3, EN ISO 12945

## Seam slippage

Seam parallel to warp: 4.4 mm, parallel to weft: 3.2 mm  
EN ISO 13 936-2 180 Newton

## Lightfastness

Note 5-6 ISO 105-B02

## Fastness to rubbing

Dry note 4-5 ISO 105-X12

Wet note 3-5 ISO 105-X12

## Flame resistance

AS/NZS 3837 Class 2

BS 5852 Crib 5 with treatment \*

BS 5852 Part 1

EN 1021-1/2

IMO FTP Code 2010 Part 8

US Cal. Bull. 117-2013

*\* To pass this test flame retardant treatment is necessary.*

*We are looking into more environmental friendly  
alternatives but for now the external finisher may use a  
treatment containing halogen based flame retardants.*

# SAHCO

1831

## **ACT Guidelines Woven fabrics**

### **Flammability**

US Cal. Bull. 117-2013

### **Dry & Wet Crocking AATCC 8**

Dry Crocking: Grade 4.5

Wet Crocking: Grade 4.0

### **Colour Fastness to Light AATCC 16**

Grade 5 minimum 40 hours

### **Physical properties**

Pilling ASTM D3511 Class 4

Breaking Strength ASTM D5034 warp 200 / weft 147 lbs

Seam Slippage ASTM D4034 warp 100 / weft 42,5 lbs

### **Abrasion ASTM D4966**

44.000 cycles Martaindale – High Traffic

### **Environmental benefits**

Follow the EU Ecolabel dye restrictions incl. AZO dye and heavy metal restrictions

No use of halogen based flame retardants (incl. brominated and chlorinated)

REACH compliant

Californian Proposition 65 list compliant

LBC Red list compliant

### **Green building certificates**

Greenguard Gold: Low chemical emission

Health Product Declaration (HPD): Declaring textile content and substance

### **Country of origin**

Italy

### **Launch**

2019

### **Warranty**

10 years. See terms and conditions on kvadrat.dk

Kvadrat packaging and cardboard is recyclable. Cardboard material is FSC certified and / or contains recycled content.

For further information

[www.kvadrat.dk/en/sahco](http://www.kvadrat.dk/en/sahco)