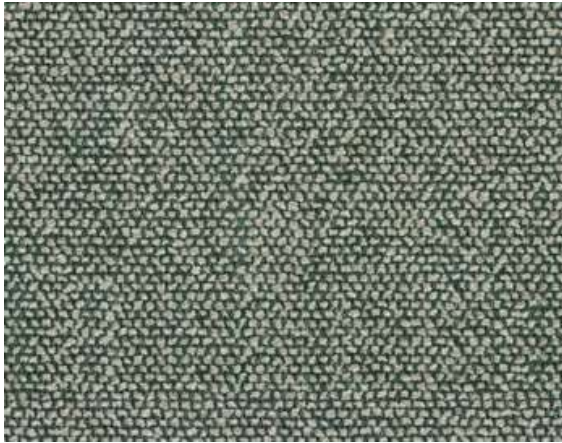


# SAHCO

1831



## Moss

Type: Upholstery

Composition: 52% cotton, 14% acrylic, 6% linen, 3% nylon,  
3% polyester, 2% viscose

Yarn type: Staple / Filament

Binding: Jacquard

Width: Approx. 138 cm, 54 inches

Weight: Approx. 1030 g/lin.m, 30 oz/ly

Repeat: None

Colour difference will occur

Cleaning: Vacuum clean frequently, ideally every week.

Remove stains as soon as they occur, with clean warm water  
or sparkling water. Extraction clean when necessary.

Extraction cleaning might dissolve water based glue. Pay  
attention to temperature and amount of cleaning fluid.

Disinfection, see [www.kvadrat.dk/en/sahco](http://www.kvadrat.dk/en/sahco)



10 year  
warranty



## Abrasion

Approx. 50.000 Martindale rubs, EN ISO 12947

*Abrasion test results exceeding ACT performance  
guidelines are not an indicator of product lifespan. Multiple  
factors affect fabric durability and appearance retention*

## Pilling

Note 4-5, EN ISO 12945

## Seam slippage

Seam parallel to warp: 4.5 mm parallel to weft: 4.5 m

EN ISO 13 936-2 180 Newton

## Lightfastness

Note 5-7 ISO 105-Bo2

## Fastness to rubbing

Dry note 4-5 ISO 105-X12

Wet note 4-5 ISO 105-X12

## Flame resistance

AS/NZS 3837 class 2

BS 5852 Crib 5 with treatment \*

BS 5852 Part 1

EN 1021-1/2

IMO FTP Code 2010 Part 8

US Cal. Bull. 117-2013 with FR treatment (AB 2998  
compliant)

*\* To pass this test flame retardant treatment is necessary.*

*We are looking into more environmental friendly  
alternatives but for now the external finisher may use a  
treatment containing halogen based flame retardants.*

# SAHCO

1831

## ACT Guidelines Woven fabrics

### Flammability

US Cal. Bull. 117-2013 with FR treatment \*

### Dry & Wet Crocking AATCC 8

Dry Crocking: Grade 4.5

Wet Crocking: Grade 4.5

### Colour Fastness to Light AATCC 16

Grade 4 minimum 40 hours

### Physical properties

Pilling ASTM D3511 Class 4.5

Breaking Strength ASTM D5034 warp 224 / weft 122 lbs

Seam Slippage ASTM D4034 warp 89 / weft 52 lbs

### Abrasion ASTM D4966

50.000 cycles Martaindale – High Traffic

### Environmental benefits

Follow the EU Ecolabel dye restrictions incl. AZO dye  
and heavy metal restrictions

No use of halogen based flame retardants (incl. brominated  
and chlorinated)

REACH compliant

Californian Proposition 65 list compliant

LBC Red list compliant

## Green building certificates

Greenguard Gold: Low chemical emission

## Country of origin

Belgium

## Launch

2019

## Warranty

10 years. See terms and conditions on kvadrat.dk

Kvadrat packaging and cardboard is recyclable. Cardboard  
material is FSC certified and / or contains recycled  
content.

For further information

[www.kvadrat.dk/en/sahco](http://www.kvadrat.dk/en/sahco)