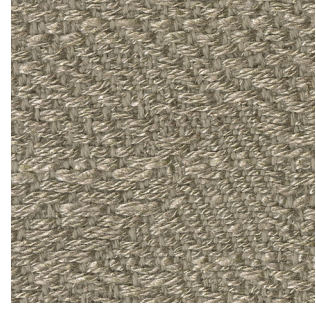
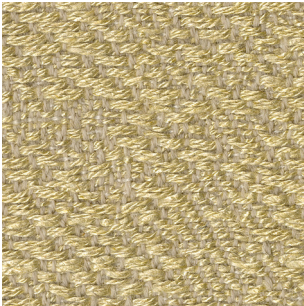


Keiga

SAHCO



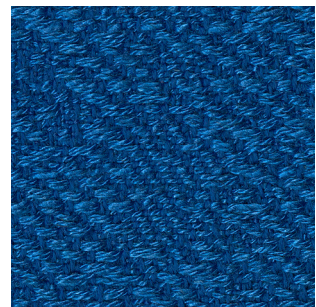
242



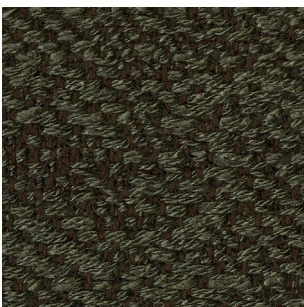
422



252



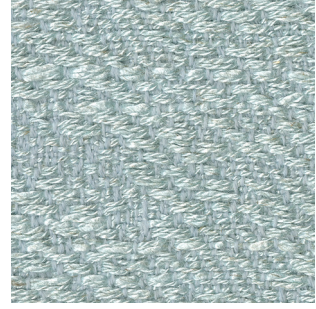
762



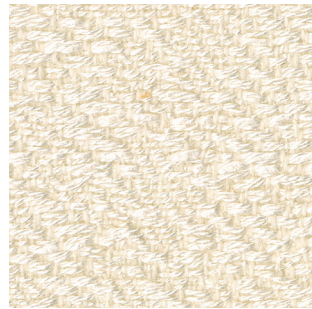
982



222



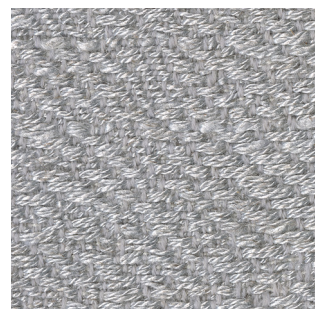
822



112



382



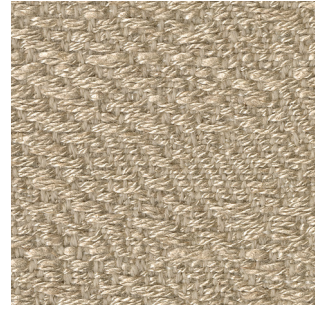
132



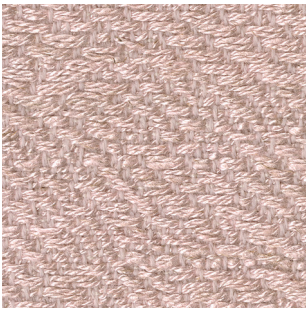
572



362



232



622



142



192



182

Keiga

Sahco upholstery

38% new wool, 37% viscose, 16% linen, 9% nylon.

Direction: ↔

Width: approx. 140cm (55")

Abrasion: 50,000 Martindale

[Click here for full Technical Specifications.](#)

