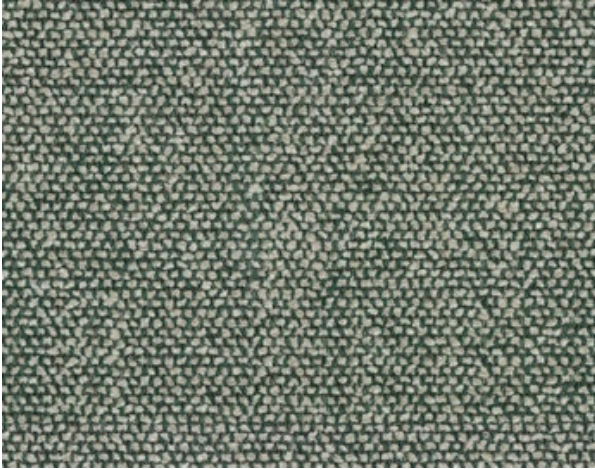


SAHCO

1831



Moss

Type: Upholstery

Composition: 52% cotton, 22% viscose, 14% acrylic,
6% linen, 3% polyester, 3% nylon

Yarn type: Staple

Binding: Jacquard

Width: Approx. 140 cm, 55 inches

Weight: Approx. 940 g/lin.m, 30 oz/ly

Repeat: None

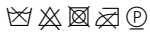
Colour difference will occur

Cleaning: Vacuum clean frequently, ideally every week.

Remove stains as soon as they occur, with clean warm water
or sparkling water. Extraction clean when necessary.

Extraction cleaning might dissolve water based glue. Pay
attention to temperature and amount of cleaning fluid.

Disinfection, see www.kvadrat.dk/en/sahco



10 year
warranty



Abrasion

Approx. 50.000 Martindale rubs, EN ISO 12947

*Abrasion test results exceeding ACT performance
guidelines are not an indicator of product lifespan. Multiple
factors affect fabric durability and appearance retention*

Pilling

Note 4-5, EN ISO 12945

Seam slippage

Seam parallel to warp: 4.5 mm parallel to weft: 4.5 m

EN ISO 13 936-2 180 Newton

Lightfastness

Note 5-7 ISO 105-B02

Fastness to rubbing

Dry note 4-5 ISO 105-X12

Wet note 4-5 ISO 105-X12

Flame resistance

AS/NZS 3837 class 2

BS 5852 Crib 5 with treatment *

BS 5852 Part 1

EN 1021-1/2

IMO FTP Code 2010 Part 8

US Cal. Bull. 117-2013 with FR treatment (AB 2998
compliant)

** To pass this test flame retardant treatment is necessary.*

*We are looking into more environmental friendly
alternatives but for now the external finisher may use a
treatment containing halogen based flame retardants.*

SAHCO

1831

ACT Guidelines Woven fabrics

Flammability

US Cal. Bull. 117-2013 with FR treatment *

Dry & Wet Crocking AATCC 8

Dry Crocking: Grade 4.5

Wet Crocking: Grade 4.5

Colour Fastness to Light AATCC 16

Grade 4 minimum 40 hours

Physical properties

Pilling ASTM D3511 Class 4.5

Breaking Strength ASTM D5034 warp 224 / weft 122 lbs

Seam Slippage ASTM D4034 warp 89 / weft 52 lbs

Abrasion ASTM D4966

50.000 cycles Martaindale – High Traffic

Environmental benefits

Follow the EU Ecolabel dye restrictions incl. AZO dye and heavy metal restrictions

No use of halogen based flame retardants (incl. brominated and chlorinated)

REACH compliant

Californian Proposition 65 list compliant

LBC Red list compliant

Green building certificates

Greenguard Gold: Low chemical emission

Country of origin

Belgium

Launch

2019

Warranty

10 years. See terms and conditions on kvadrat.dk

Kvadrat packaging and cardboard is recyclable. Cardboard material is FSC certified and / or contains recycled content.

For further information

www.kvadrat.dk/en/sahco