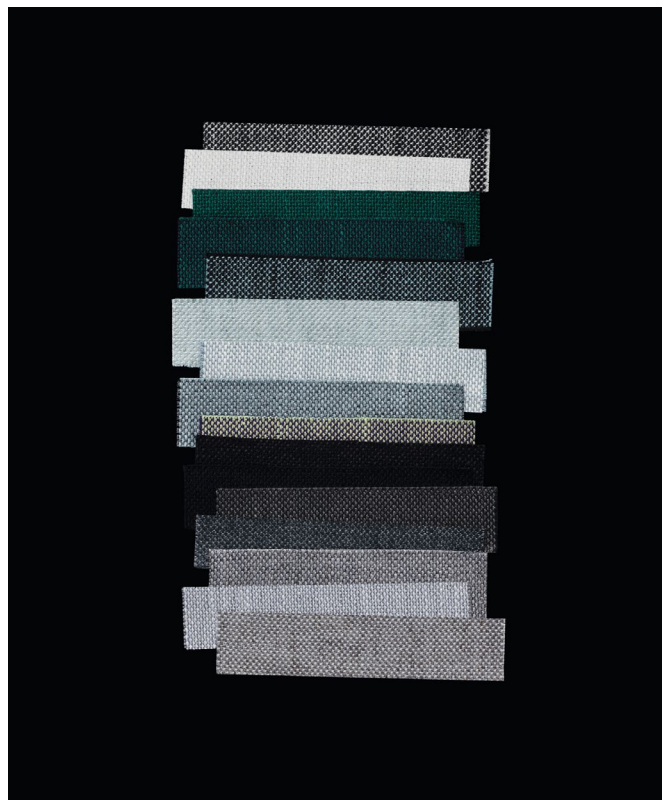
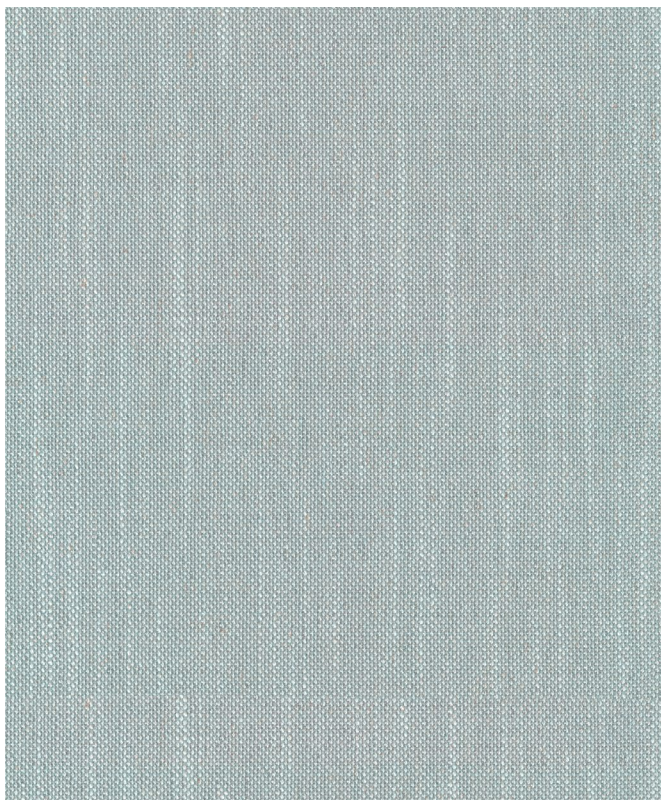


KVADRAT/RAF SIMONS



SUNNIVA 3

Design: Raf Simons

Type: Upholstery, panel fabric

Composition: 58% new wool, 25% viscose, 8% linen, 5% nylon, 4% polyester

Yarn type: Woolen spun

Binding: Dobby

Width: Approx. 140 cm, 55 inches

Weight: Approx. 593 g/lin.m, 19.1 oz/ly

Repeat: None

Foreign fibres may occur

Cleaning: Vacuum clean frequently, ideally every week.

Remove stains as soon as they occur, with clean warm water or sparkling water. Extraction clean when necessary.

Extraction cleaning might dissolve water-based glue. Pay attention to temperature and amount of cleaning fluid.

Disinfection, see kvadrat.dk

More info: Care and maintenance kvadrat.dk



10 year
warranty



Abrasion

Approx. 50.000 Martindale rubs, EN ISO 12947

Abrasion test results exceeding ACT performance guidelines are not an indicator of product lifespan. Multiple factors affect fabric durability and appearance retention

Pilling

Note 3, EN ISO 12945

Seam slippage

Seam parallel to warp: 7.5 mm parallel to weft: 3.0 mm
EN ISO 13 936-2 180 Newton

Lightfastness

Note 4-7 ISO 105-B02

Fastness to rubbing

Dry note 3-5 ISO 105-X12

Wet note 3-5 ISO 105-X12

Flame resistance

AS/NZS 1530-3
AS/NZS 3837 class 2
ASTM E84 Class A Adhered
ASTM E84 B Unadhered
BS 5852 crib 5 with treatment *
BS 7176 Low Hazard
EN 1021-1/2
IMO FTP Code 2010:Part 8 with treatment *
NFPA 260
US Cal. Bull. 117-2013

Free from added flame retardant chemicals as standard

** To pass this test flame retardant treatment is necessary.
We are looking into more environmentally friendly alternatives
but for now, the external finisher may use a treatment containing halogen-based flame retardants*

ACT Guidelines Woven fabrics

Flammability

US Cal. Bull. 117-2013

Dry & Wet Crocking

Dry Crocking: Grade 5.0

Wet Crocking: Grade 4.0

Colour Fastness to Light

Grade 4.0 minimum 40 hours

Physical properties

Pilling Class 3

Breaking Strength warp 166 / weft 136 lbs.

Seam Slippage warp 76.5 / weft 23.5 lbs. (Fail)

Abrasion

50.000 cycles Martindale - High Traffic / Public Spaces

Benefits of wool

Wool is a renewable resource

Wool is very comfortable because of its ability to absorb/
give off humidity

Wool is flame retardant

Wool is biodegradable

Wool is naturally soil resistant

Wool ages with grace

Quality benefits

Complies with Möbelfakta

Very good abrasion

Good lightfastness

Flame retardant

Environmental benefits

Follow the EU Ecolabel dye restrictions incl. AZO dye and heavy metal restrictions

No content of PFCs or 'PFAS'

REACH compliant

Californian Proposition 65 list compliant

LBC Red list compliant

Healthier Hospitals compliant

Green building certificates

Greenguard Gold: Low chemical emission

Environmental Product Declaration (EPD): 3rd Party Verified. ISO 14025 & EN 15804. Developed in accordance with the European standard EN 15804+A2.

Health Product Declaration (HPD): Declaring textile content and substance

Country of origin

Norway

Warranty

10 years. See terms and conditions on kvadrat.dk

Kvadrat packaging and cardboard is recyclable.

Cardboard material is FSC certified and / or contains recycled content.

For further information

kvadrat.dk