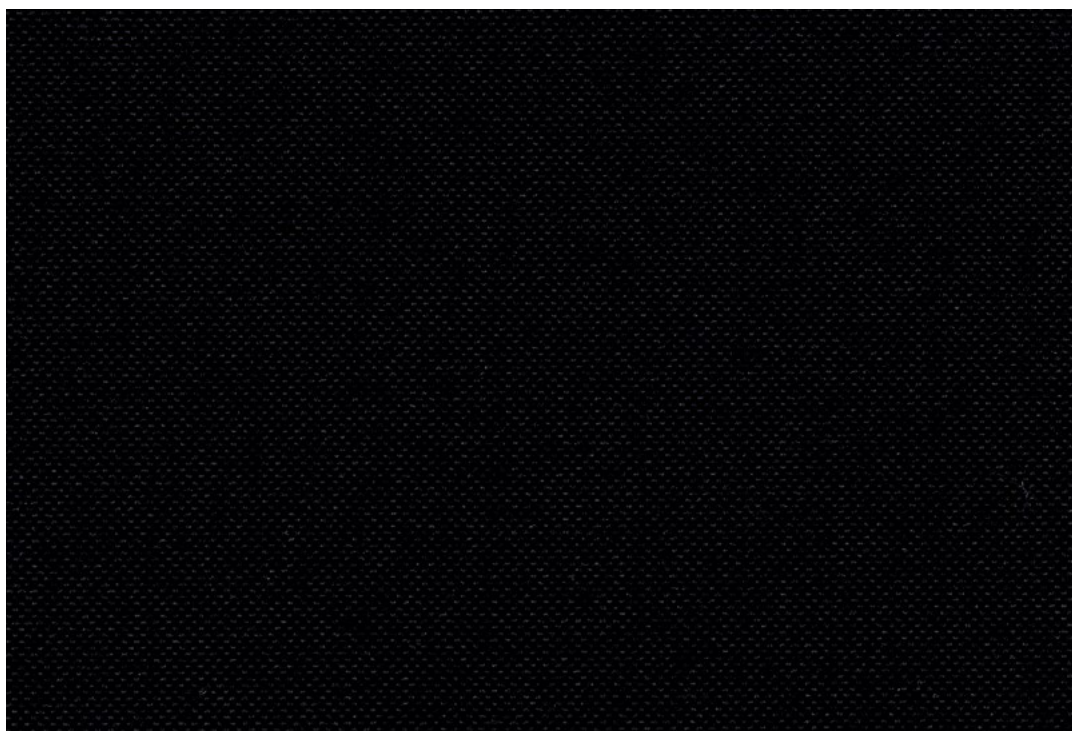


Graphite

Cristian Zuzunaga

Openness factor 3%
Excellent glare control
Cool grey metallised textile
100% Recycled textile waste



Specification details

Openness factor	3%
Composition	100% recycled polyester (recycled textile waste) with cool grey aluminium backing
Fabric width	275 cm (108 inches)
Weight	210 g/m ²
Thickness	0.42 mm
IR emissivity metal side	0.50
Light fastness	Interior 4-8, Exterior 8 (ISO105-B02)
Fire tests	EN 13501-1 (B-s1, d0), BS 5867 part 2 type B, DIN 4102 B1, NFPA 701
Environment	Textile to textile recycled yarns, GREENGUARD Gold, STANDARD 100 Class IV by OEKO-TEX®, Health Product Declaration (HPD). Comply with REACH and RoHS2. Free of intentionally added PFAS. Phthalate free, Formaldehyde free, Antimicrobials free, PVC free.

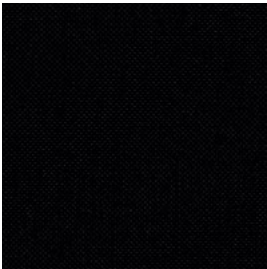
Technical details

Colour	Optical properties acc. to EN 14500:2021 and EN 14501:2021					
Number	Rs (%)	Ts (%)	Tv (%)	Tuv (%)	Ra	Glare control rating
100	44	7	7	4	99	3
130	44	7	7	5	98	3
170	44	6	4	4	97	4
190	44	6	4	4	96	4
210	44	7	7	4	97	3
250	44	7	6	4	98	4
670	44	6	5	4	93	4
990	44	6	4	4	96	4

Colour	Solar control double glazing G			Solar control triple glazing I		
Number	gtot/SHGC (%)	Utot-value (W/m ² K)	Tv, tot (%)	gtot/SHGC (%)	Utot-value (W/m ² K)	Tv, tot (%)
100	21	0.79	5	21	0.53	5
130	21	0.79	5	21	0.53	5
170	21	0.79	3	21	0.53	3
190	21	0.79	3	21	0.53	3
210	21	0.79	5	21	0.53	5
250	21	0.79	4	21	0.53	4
670	21	0.79	4	21	0.53	4
990	21	0.79	3	21	0.53	3

Rs: Solar reflection | **Ts:** Solar transmission | **As:** Solar absorption calculation: 100 - Rs - Ts = As
Tv: Visual light transmission | **Tuv:** UV transmission | **Ra:** Colour rendering index
Glazing G: g=33% / U=1.0 / Tv=70% (acc. to EN14501: 2021) | **Glazing I:** g=31% / U=0.6 / Tv=64% (with ref. panes acc. to EN 14501:2021)
gtot/SHGC: Solar heat gain through total fenestration | **Utot:** Thermal heat loss (or gain) through total fenestration
Tv, tot: Total light transmission through total fenestration

Graphite



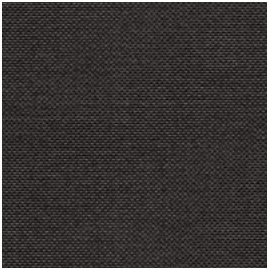
190



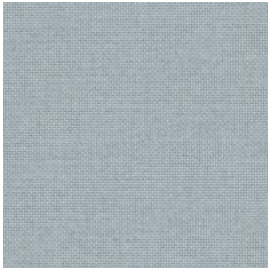
250



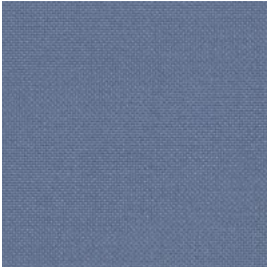
210



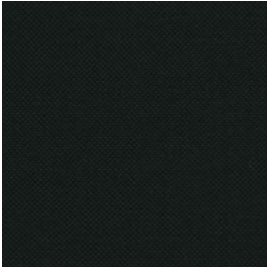
170



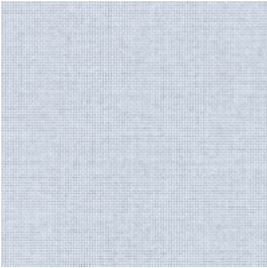
130



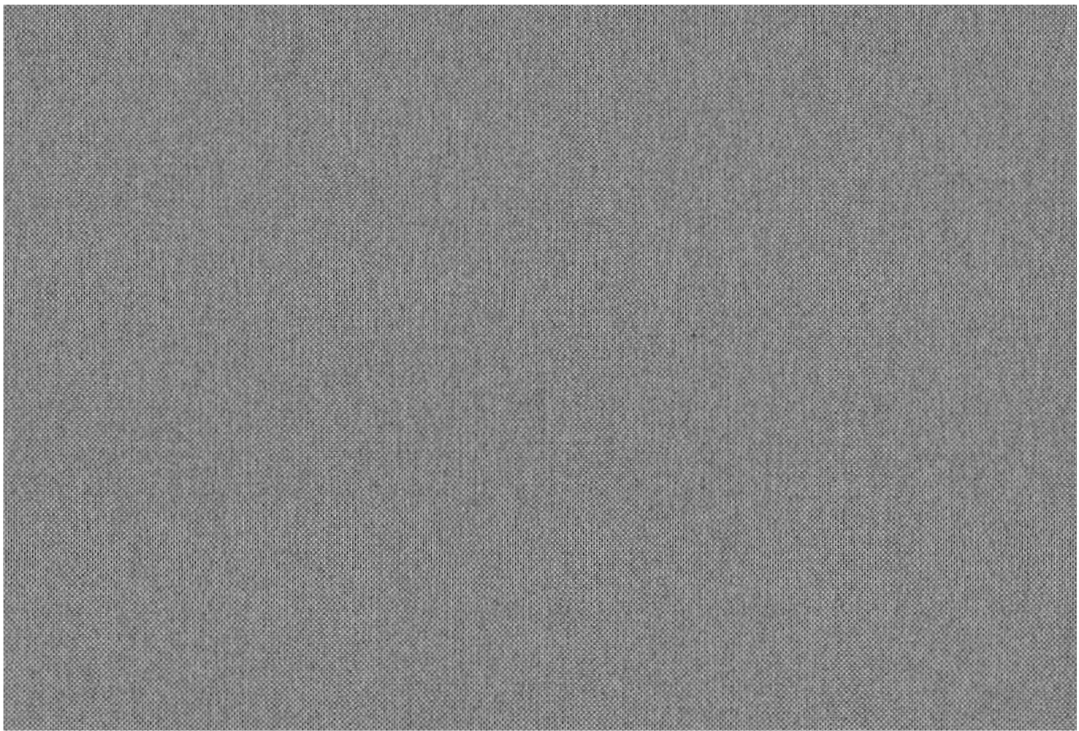
670



990



100



Graphite

Design: Cristian Zuzunaga

DK

Anvendelse Rullegardin.

Beskrivelse 100% polyester (genanvendt tekstilaffald) med cool grå aluminium bagside. Bredd 275 cm. Vægt 210 g/m². Tykkelse 0.42 mm. Transfer tryk. Nuanceforskel kan forekomme.

Lysægthed Indvendigt 4-8, Udvendigt 8 (ISO 105-B02).

Flammesikring EN 13501-1 (B-s1, d0), BS 5867 part 2 type B, DIN 4102 B1, NFPA 701 (Kopi af testrapport kan rekvireres).

Vedligeholdelse Se ISO symboler. Kan børstes eller støvsuges (nedsat sug) med børstemundstykke. Ved kraftigere tilsmudsning anbefales det at kontakte et professionelt renseri.

UK

Application Roller blind.

Description 100% polyester (recycled textile waste) with cool grey aluminium backing. Width 275 cm (108 inches). Weight 210 g/m². Thickness 0.42 mm. Transfer print. Colour differences may occur.

Lightfastness Interior 4-8, Exterior 8. (ISO 105-B02)

Flame resistance EN 13501-1 (B-s1, d0), BS 5867 part 2 type B, DIN 4102 B1, NFPA 701 (Copy of test report available).

Care See ISO symbols. Can be brushed or carefully vacuumed (reduced suction power) with a brush nozzle. In case of considerable staining, we recommend contacting a professional dry cleaner.

DE

Anwendungsbereich Rollos.

Beschreibung 100% Polyester (recycelte Textilabfälle) mit kühlgrauem Aluminium-rückseite. Breite max. 275 cm. Gewicht 210 g/m². Dicke 0.42 mm. Transferdruck. Farbunterschiede können vorkommen.

Lichtechtheit Innen 4-8, Äußeres 8. (ISO 105-B02)

Flammschutz EN 13501-1 (B-s1, d0), BS 5867 part 2 type B, DIN 4102 B1, NFPA 701 (Testbericht verfügbar).

Pflege Siehe ISO Pflegesymbole. Reinigung durch vorsichtiges Abbürsten oder saugen mit Bürstenaufsatz und reduzierter Leistung möglich. Bei starker Verschmutzung empfehlen wir einen professionellen Reinigungsdienst.

NL

Toepassing Rolgordijn.

Omschrijving 100% polyester (gerecycled textielafval) met cool grey aluminium achterkant. Breedte 275 cm. Gewicht 210 g/m². Dikte 0.42 mm. Transfer print. Kleurverschillen kunnen optreden.

Lichtechtheid Interieur 4-8, Extérieur 8. (ISO 105-B02)

Brandwerendheid EN 13501-1 (B-s1, d0), BS 5867 part 2 type B, DIN 4102 B1, NFPA 701 (Op aanvraag sturen wij u graag een kopie van het testrapport).

Onderhoud Zie de ISO symbolen. Kan schoongemaakt worden door middel van een borstel of een stofzuiger met borstelstuk op halve kracht. In het geval van serieuze vlekvorming, raden we aan contact op te nemen met een professionele reiniger.

FR

Domaine d'utilisation Store.

Description 100% polyester (déchets textiles recyclés) avec support en aluminium gris froid. Largeur 275 cm. Poids 210 g/m². Épaisseur 0.42 mm. Impression par transfert. Ecart des coloris possibles.

Résistance à la lumière Intérieur 4-8, Extérieur 8. (ISO 105-B02)

Normes au feu EN 13501-1 (B-s1, d0), BS 5867 part 2 type B, DIN 4102 B1, NFPA 701 (La copie du compte rendu des tests est disponible sur demande).

Entretien Voir les symboles ISO. Le tissu peut être brossé ou aspiré avec soin (puissance d'aspiration réduite) avec un embout en forme de brosse. Dans le cas où le tissu a été fortement taché, nous suggérons de contacter un pressing professionnel.

IT

Destinazione d'uso Tende a rullo.

Caratteristiche 100% poliestere (rifiuti tessili riciclati) con supporto in alluminio grigio freddo. Altezza 275 cm. Peso 210 g/m². Spessore 0.42 mm. Transfer print. Possibili differenze per colore.

Resistenza alla luce Interno 4-8, Esterno 8. (ISO 105-B02)

Ignifugazione EN 13501-1 (B-s1, d0), BS 5867 part 2 type B, DIN 4102 B1, NFPA 701 (Disponibile copia del test).

Manutenzione Per favore seguire simboli ISO. Può essere spazzolato oppure accuratamente aspirato (ridurre la potenza di aspirazione) con un ugello a spazzola. In caso di macchie considerevoli, si consiglia di contattare un lavasecco professionale.

ES

Aplicación Estor.

Descripción 100% poliéster (residuos textiles reciclados) con soporte de aluminio gris frío. Anchura 275 cm. Peso 210 g/m². Grosor 0.42 mm. Impresión digital textil. Posibles variaciones de color.

Resistencia a la luz Interior 4-8, Exterior 8. (ISO 105-B02)

Resistencia al fuego EN 13501-1 (B-s1, d0), BS 5867 part 2 type B, DIN 4102 B1, NFPA 701 (Copia del informe de ensayos disponible).

Limpieza Consulte los símbolos ISO. Se puede cepillar o aspirar con cuidado (baja intensidad de succión) con una boquilla de cepillo. En caso de manchas considerables, recomendamos contactar con un profesional de limpieza.

SE

Användning Rullgardin.

Beskrivning 100% polyester (återvunnet textilavfall) med baksida i kallgrå aluminium. Bredd 275 cm. Vikt 210 g/m². Tjocklek 0.42 mm. Transfertryck. Viss nyansskillnad kan förekomma.

Ljushärdighet Interiör 4-8, Exteriör 8. (ISO 105-B02)

Flammskydd EN 13501-1 (B-s1, d0), BS 5867 part 2 type B, DIN 4102 B1, NFPA 701 (Kopia av testrapport finns tillgänglig vid förfrågan).

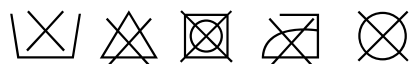
Underhåll Se ISO symboler. Kan borstas eller försiktigt dammsugas med ett borstmunstykke. I händelse av fläckar rekommenderar vi att du lämnar in rullgardinen till kemptvätt.

ZH

产品应用 遮光卷帘。

产品详情 100% 涤纶（回收纺织废料），冷灰色铝质底衬。幅宽：275厘米。克重：210 克/平方米。厚度：0.42毫米。转印。可能出现色差。

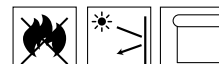
日晒色牢度 外层：室内4-8，8 (ISO 105-B02)。阻燃级别 欧洲标准EN 13501-1 (B-s1, d0)、DIN 4102 B1、BS 5867 第2部分B型、NFPA 701（可提供检测报告副本）。保养须知 请参照ISO标识。可用毛刷或毛刷吸嘴（减少吸力）小心清理。如脏污较严重，建议联系专业干洗服务。



Contact and further information kvadrat.dk



STANDARD
100
15.HNL.57853
Hohenstein



5 year
warranty

Graphite

The metallised roller blind textile *Graphite* by Cristian Zuzunaga is inspired by the changing light and soft greys of the Northern European atmosphere. Named after one of the artist's essential tools, the metallised textile embodies the dynamic, mineral qualities of graphite, whose reflections change under different light intensities. The backing, with a darker, more subtle aluminium layer, evokes the appearance of urban materials such as asphalt and concrete, which change colour tone depending on weather conditions. *Graphite* offers excellent glare control, minimising harsh light and creating a comfortable and visually balanced indoor environment without obstructing views.

Made from 100% recycled polyester yarn, *Graphite* supports sustainable, circular design, combining natural inspiration, urban aesthetics, and environmental responsibility.

Cristian Zuzunaga

Cristian Zuzunaga creates innovative work that sits between art, fashion, and design. By examining the symbiotic relationship between analogue and digital technologies, his practice aims to make sense of our place in the world today. He has become best known for his use of pixels, which he describes as “the icon of our time”, to create colourful visual landscapes.

Zuzunaga studied Typography and Graphic Design at the London College of Communication and the Royal College of Art in London, before starting and running his own eponymous label, Zuzunaga, from 2010 to 2023. He now works in Bristol, where he recently launched Frankenstein Press, a new printmaking space, gallery, and creative workshop dedicated to his artistic practice, teaching, and meaningful collaborations.