



TESTING LABORATORY  
Cejl 480/12, 602 00 Brno, Czech Republic

**TESTING LABORATORY 1001**  
accredited according to ČSN EN ISO/IEC 17025:2018 by the Czech Accreditation Institute

# TEST REPORT

AZL 25/0203-04

**CUSTOMER:** Kvadrat A/S  
Lundbergsvej 10  
8400 Ebeltoft  
Denmark

**SAMPLE:** Sio Outdoor  
(according to the customer order) Use surface: 93 % polypropylene, 7 % polyester  
Colours: 0186, 0196, 0226, 0276, 0396, 0556, 0756

*Sample description on page 2*

## CONDITIONS OF APPLICATION OF THE TEST REPORT:

The laboratory is not responsible for information supplied by the customer that may affect the validity of test results.

Test Report contains results of the tests related to the submitted sample only. Sampling has been done by the customer. The Report may not be reproduced in any way other than as a complete set. Reproduction of certain parts of the Report is subject to approval of the test laboratory, which has issued it. All information about subcontracted tests results or unaccredited test methods is presented in text part of the test report. Unless otherwise stated, all tests were performed at the address, listed in the header.

**PREPARED BY:**  
**CHECKED BY:**  
**NUMBER OF PAGES:**

S. Aulehlová *Aulehlová*  
O. Kovářová *Kovářová*  
5

**DATE OF  
ACCEPTANCE:**  
05.02.2025

**DATE OF  
EXAMINATION:**  
06.02. – 17.02.2025

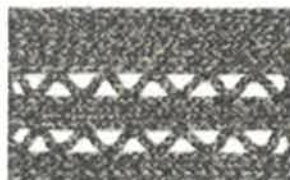
**DATE OF  
ISSUE:**  
04.03.2025



+420 543 426 730  
www.tzu.cz  
azl@tzu.cz



**Description of samples:**



**Sio Outdoor  
0186  
volcanic soil**



**Sio Outdoor  
0196  
river pebbles**



**Sio Outdoor  
0226  
limestone**



**Sio Outdoor  
0276  
warm clay**



**Sio Outdoor  
0396  
black soil**



**Sio Outdoor  
0556  
red earth**



**Sio Outdoor  
0756  
blue clay**





***Determination of colour fastness to rubbing***

was tested according to EN ISO 105-X12

- rubbing conditions: dry / wet (wetting of rubbing cloth: 100 %)
- rubbing finger: for textiles [diameter (16±0,1) mm; downward force (9±0,2) N]
- climatic conditions during testing: temperature (20±2) °C, RH (65±2) %
- time of air-conditioning of samples: 4 hours

**Result:** grade of grey scale (staining to cotton rubbing cloth according to EN ISO 105-A03)

Sample	Results*	
Sio Outdoor, 0186	staining in warp / weft direction	
	dry conditions	4 / 4
	wet conditions	4-5 / 4-5
Sio Outdoor, 0196	staining in warp / weft direction	
	dry conditions	4 / 4
	wet conditions	4-5 / 4-5
Sio Outdoor, 0226	staining in warp / weft direction	
	dry conditions	4 / 4
	wet conditions	4-5 / 4-5
Sio Outdoor, 0276	staining in warp / weft direction	
	dry conditions	4 / 4
	wet conditions	4-5 / 4-5
Sio Outdoor, 0396	staining in warp / weft direction	
	dry conditions	4 / 4
	wet conditions	4-5 / 4-5
Sio Outdoor, 0556	staining in warp / weft direction	
	dry conditions	4 / 4
	wet conditions	4-5 / 4-5
Sio Outdoor, 0756	staining in warp / weft direction	
	dry conditions	4 / 4
	wet conditions	4-5 / 4-5





***Determination of colour fastness to water***

was tested according to EN ISO 105-E01

- adjacent fabrics: polypropylene / polyester
- the option used: samples tested horizontally

**Result:** grade of grey scale (colour change according to EN 20105-A02, staining according to EN ISO 105-A03)

Sample	Results*
Sio Outdoor, 0186	colour change / staining 5 / 4-5 / 4-5
Sio Outdoor, 0196	colour change / staining 4-5 / 3-4 / 3-4
Sio Outdoor, 0226	colour change / staining 5 / 4 / 4-5
Sio Outdoor, 0276	colour change / staining 5 / 4 / 4-5
Sio Outdoor, 0396	colour change / staining 5 / 4 / 4
Sio Outdoor, 0556	colour change / staining 5 / 4 / 4-5
Sio Outdoor, 0756	colour change / staining 5 / 4 / 4-5

***Determination of colour fastness to sea water***

was tested according to EN ISO 105-E02

adjacent fabrics: polypropylene / polyester  
the option used: samples tested horizontally

**Result:** grade of grey scale (colour change according to EN 20105-A02, staining according to EN ISO 105-A03)

*This test is outside the scope of accreditation.*

Sample	Results*
Sio Outdoor, 0186	colour change / staining 5 / 5 / 5
Sio Outdoor, 0196	colour change / staining 5 / 5 / 5
Sio Outdoor, 0226	colour change / staining 5 / 5 / 5
Sio Outdoor, 0276	colour change / staining 5 / 5 / 5
Sio Outdoor, 0396	colour change / staining 5 / 5 / 5
Sio Outdoor, 0556	colour change / staining 5 / 5 / 5
Sio Outdoor, 0756	colour change / staining 5 / 5 / 5





***Determination of colour fastness to chlorine water***

was tested according to EN ISO 105-E03

the option used: samples tested horizontally

concentration of sodium hypochlorite used: 20 mg/l

Result: grade of grey scale (colour change according to EN 20105-A02, staining according to EN ISO 105-A03)

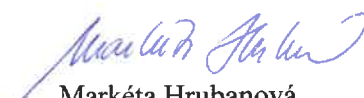
*This test is outside the scope of accreditation.*

Sample	Results*
Sio Outdoor, 0196**	colour change 5
Sio Outdoor, 0226**	colour change 5
Sio Outdoor, 0556**	colour change 5
Sio Outdoor, 0756**	colour change 5
Sio Outdoor, 0186	colour change 5
Sio Outdoor, 0276	colour change 5
Sio Outdoor, 0396	colour change 5

\* All tests were performed on the samples Sia Outdoor, that has the same colour shades, the only difference is the pattern.

\*\* Results are taken from AZL 24/1088.

Approved by:

  
Markéta Hrubanová  
Head of Testing Laboratories

End of report

