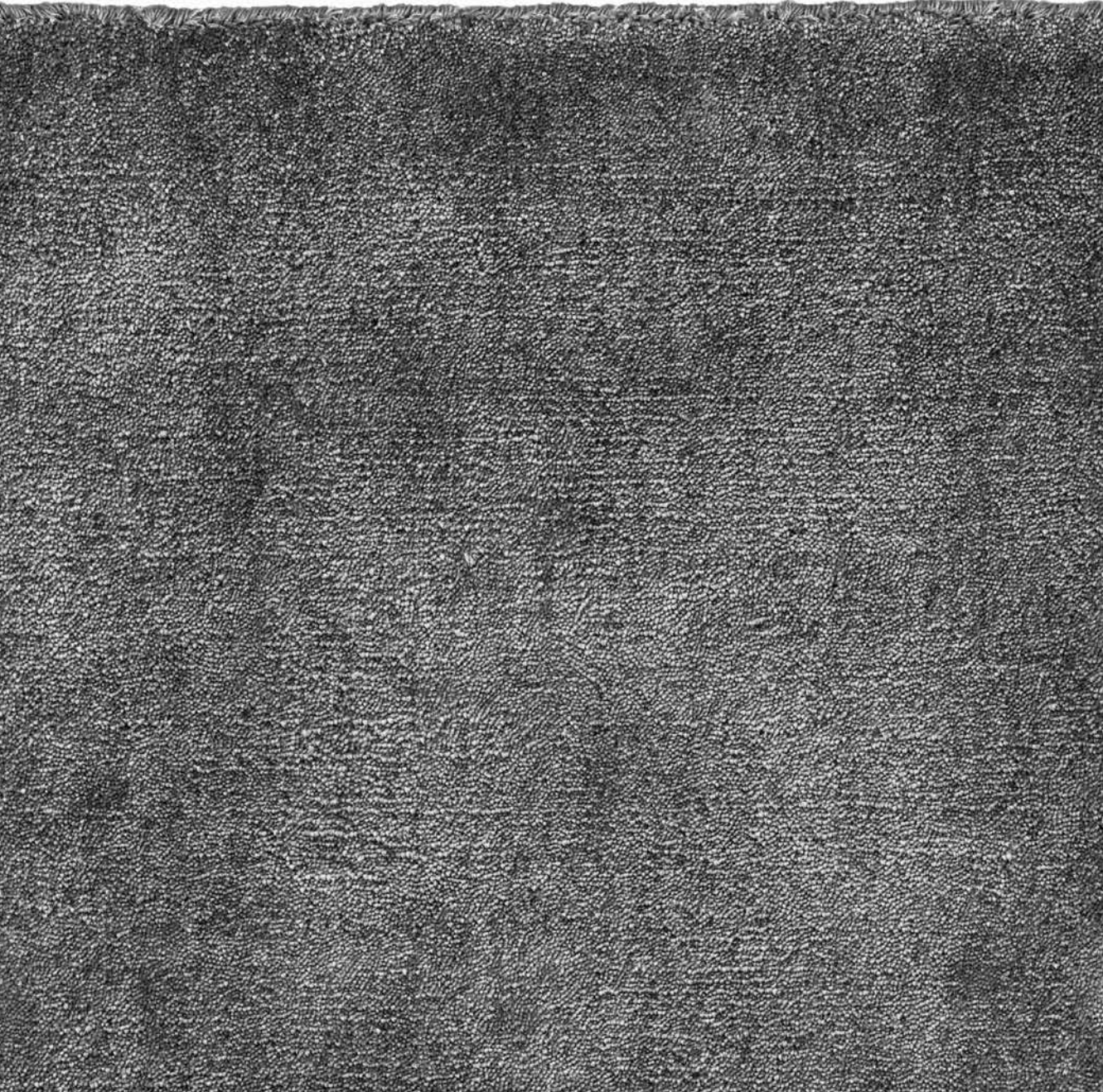
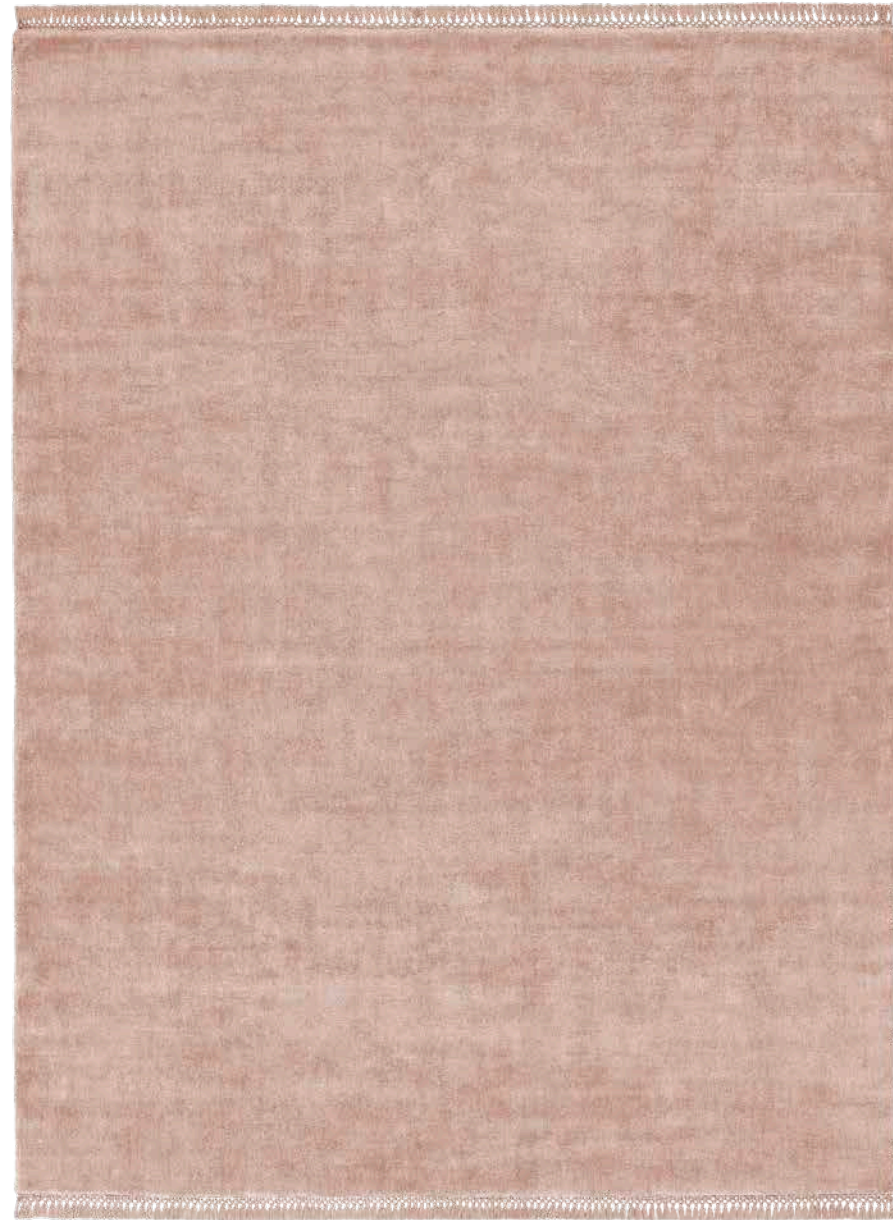


Loux series

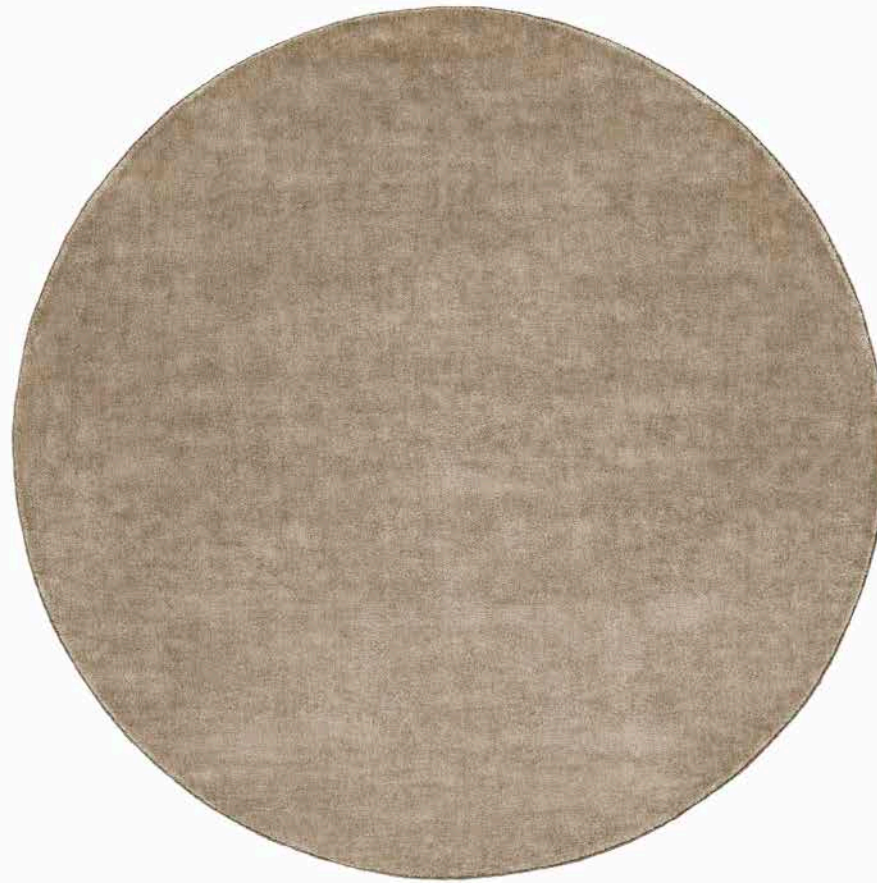


180 x 240 cm



Loux Fringes 0610

Ø 180 cm



Loux 0920



Loux 0110



Loux Fringes 0110



0110



0130



0140



0160



0180



0210



0230



0260



0370



0610



0920



0960

Loux

Loux Fringes

Design Kvadrat Residential

Production method Handwoven

Material 100 % lyocell

Height 11 mm (½")

Weight 4500 g/m² (14.7 oz/sq ft)

Maximum size 380 cm × 600 cm (12' 5 ½" × 19' 8")

Maximum size round Ø 380 cm (12' 5 ½")

Size variation +/- 3%

Traffic Suitable for light to moderate residential use with exceptions of stairways, corridors or with the use of castors

Flammability EN 13501-1 Bfl-s1, ASTM D 2859/CPSC FF 1-70/FF 2-70, 16 CFR 1630

Care Professional cleaning

Country of origin India

Notes

Slight colour differences may occur

Irregularities may occur as a result of the handcrafted process

Shading may develop over time as cut pile yarns change direction with use

Twelve colours are shared across the *Loux* series

Fringes are available in customised colours, choose from 12 *Loux* colours

Fringes are made from lyocell

Fringe length measurement includes hand-tied knotting

Length of fringes can vary by +/- 1 cm (½")

Rug sizes exclude fringes

Fringes possible with round rugs

Larger sizes possible on request

Round rug will be calculated as a square

Odd shape possible on request

Rug underlay recommended

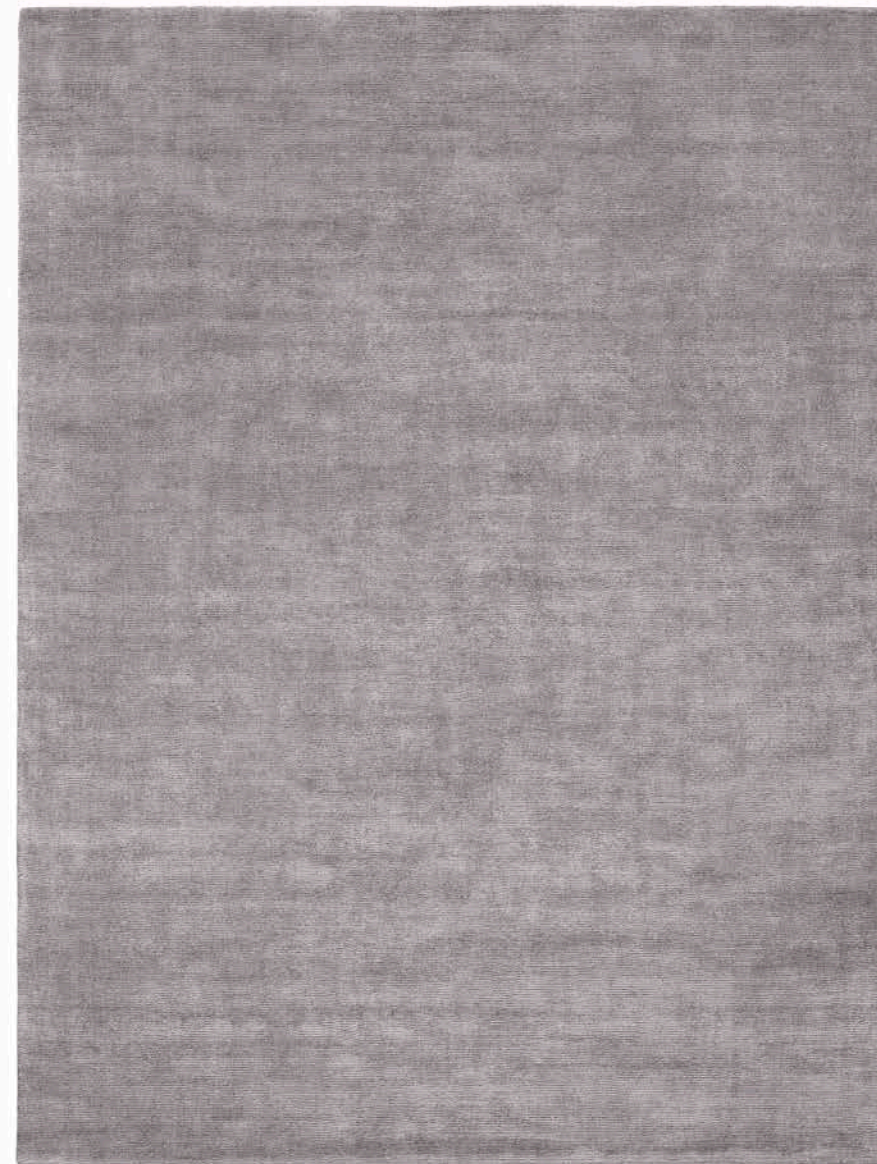
For more information please visit: kvadrat.dk

180 x 240 cm



Loux Line Fringes 0962

180 x 240 cm



Loux Line 0162



Loux Line 0142



Loux Line Fringes 0142



0112



0132



0142



0162



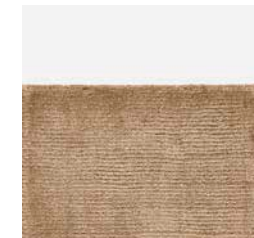
0182



0212



0232



0262



0372



0612



0922



0962

Loux Line

Loux Line Fringes

Design Kvadrat Residential

Production method Handwoven

Material 100 % lyocell

Height 12 mm (½")

Weight 4400 g/m² (14.4 oz/sq ft)

Maximum size 380 cm × 600 cm (12' 5 ½" × 19' 8")

Maximum size round Ø 380 cm (12' 5 ½")

Size variation +/- 3%

Traffic Suitable for light to moderate residential use with exceptions of stairways, corridors or with the use of castors

Flammability EN 13501-1 Bfl-s1, ASTM D 2859/CPSC FF 1-70/FF 2-70, 16 CFR 1630

Care Professional cleaning

Country of origin India

Notes

Slight colour differences may occur

Irregularities may occur as a result of the handcrafted process

Shading may develop over time as cut pile yarns change direction with use

Twelve colours are shared across the *Loux* series

Fringes are available in customised colours, choose from 12 *Loux* colours

Fringes are made from lyocell

Fringe length measurement includes hand-tied knotting

Length of fringes can vary by +/- 1 cm (½")

Rug sizes exclude fringes

Fringes possible with round rugs

Larger sizes possible on request

Round rug will be calculated as a square

Odd shape possible on request

Rug underlay recommended

For more information please visit: kvadrat.dk

180 x 240 cm

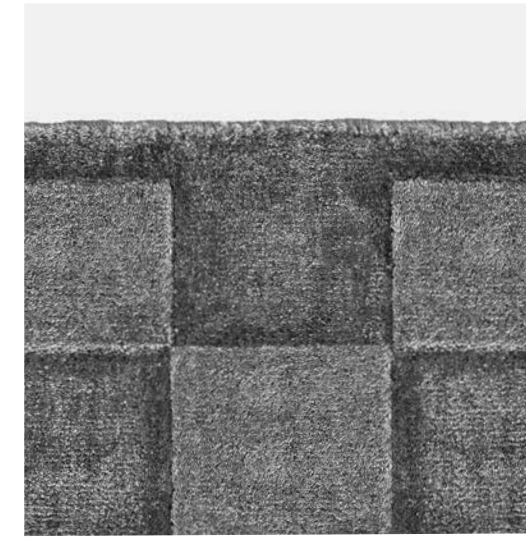


Loux Level Fringes 0265

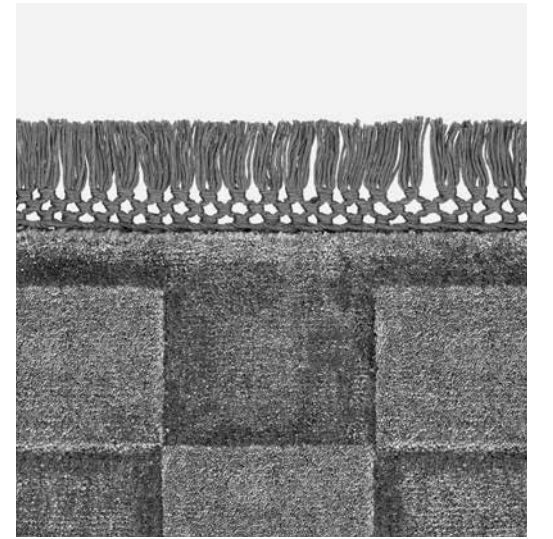
180 x 240 cm



Loux Level 0135



Loux Level 0185



Loux Level Fringes 0185



0115



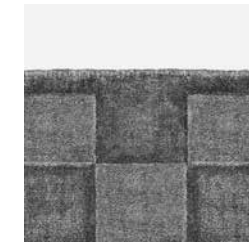
0135



0145



0165



0185



0215



0235



0265



0375



0615



0925



0965

Loux Level

Loux Level Fringes

Design Kvadrat Residential

Production method Handwoven

Material 100 % lyocell

Height 12 mm (½")

Weight 4000 g/m² (13.1 oz/sq ft)

Standard size 180 cm × 240 cm (5' 11" × 7' 10 ½"), 200 cm × 300 cm (6' 6 ½" × 9' 10"), 250 cm × 350 cm (8' 2 ½" × 11' 6"), 300 cm × 400 cm (9' 10" × 13' 1 ½"), 380 cm × 500 cm (12' 5 ½" × 16' 5")

Size variation +/- 3%

Traffic Suitable for light to moderate residential use with exceptions of stairways, corridors or with the use of castors

Flammability EN 13501-1 Bfl-s1, ASTM D 2859/CPSC FF 1-70/FF 2-70, 16 CFR 1630

Care Professional cleaning

Country of origin India

Notes

Slight colour differences may occur

Irregularities may occur as a result of the handcrafted process

Shading may develop over time as cut pile yarns change direction with use

Twelve colours are shared across the *Loux* series

Customised pattern available upon request

Hand-carved pattern features squares of 10 × 10 cm (4" × 4") framed by a border

Height difference between high and low cut pile is 2 mm (0.08")

Download technical specifications for drawing

Fringes are available in customised colours, choose from 12 *Loux* colours

Fringes are made from lyocell

Fringe length measurement includes hand-tied knotting

Length of fringes can vary by +/- 1 cm (½")

Rug sizes exclude fringes

Larger sizes possible on request

Round or odd shape possible on request

Rug underlay recommended

For more information please visit: kvadrat.dk

The *Loux* series comprises six luxurious rugs crafted for exceptional softness, with shimmering surfaces that interact playfully with the light. The series offers three distinct pile qualities – a smooth cut pile, a linear cut-and-loop pile, and a hand-carved relief pile – each finished with hand-bound edges or decorative fringes for a bespoke touch.

Handwoven from 100% lyocell, the pile yarns are secured into a woven base with the double-back technique, creating a density of 2.7 million yarns per square metre.

Twelve colours are shared across the series, inspired by the lustre of precious metals and stones. The palette ranges from cool, pearlescent tones of porcelain, silver and oyster to deeper, rich tones of brass, cedar and onyx.

Designed for residential spaces with light to moderate use, each rug in the *Loux* series can be customised in size, pattern, shape and finishing details, offering understated elegance tailored to individual spaces.