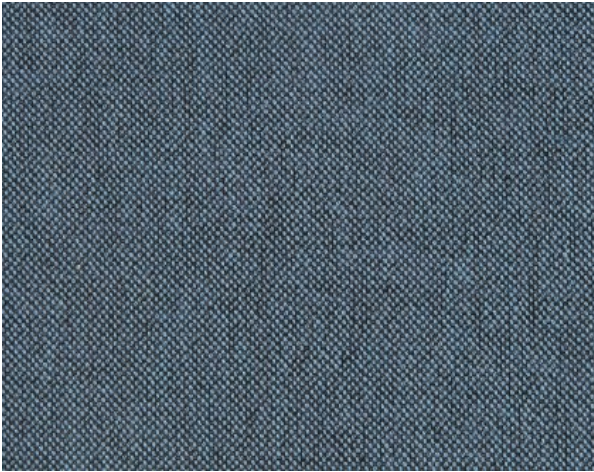


# SAHCO

1831



## Clay

Type: Upholstery

Composition: 76% linen, 21% cotton, 3% polyester

Yarn type: Staple / Filament

Binding: Dobby

Width: Approx. 140 cm, 55 inches

Weight: Approx. 1090 g/lin.m, 35 oz/ly

Repeat: None

Foreign fibers may occur

Colour differences may occur

Cleaning: Vacuum clean frequently, ideally every week.

Remove stains as soon as they occur, with clean warm water or sparkling water. Extraction clean when necessary.

Extraction cleaning might dissolve water based glue. Pay attention to temperature and amount of cleaning fluid.

Disinfection, see [www.kvadrat.dk/en/sahco](http://www.kvadrat.dk/en/sahco)



10 year  
warranty



## Abrasion

Approx. 45.000 Martindale rubs, EN ISO 12947

*Abrasion test results exceeding ACT performance guidelines are not an indicator of product lifespan. Multiple factors affect fabric durability and appearance retention*

## Pilling

Note 4, EN ISO 12945

## Seam slippage

Seam parallel to warp: 2.8 mm, parallel to weft: 2.8 mm  
EN ISO 13 936-2 180 Nweton

## Lightfastness

Note 4-6 ISO 105-B02

## Fastness to rubbing

Dry note 4 ISO 105-X12

Wet note 3-4 ISO 105-X12

## Flame resistance

BS 5852 Crib 5 with treatment \*

BS 5852 Part 1

EN 1021-1/2

IMO FTP Code 2010 Part 8

US Cal. Bull. 117-2013 with Cal. 117 compliant interliner

*\* To pass this test flame retardant treatment is necessary. We are looking into more environmental friendly alternatives but for now the external finisher may use a treatment containing halogen based flame retardants.*

# SAHCO

1831

## **ACT Guidelines Woven fabrics**

### **Flammability**

US Cal. Bull. 117-2013 with Cal. 117 compliant interliner

### **Dry & Wet Crocking AATCC 8**

Dry Crocking: Grade 4.5

Wet Crocking: Grade 1.5-4.5

### **Colour Fastness to Light AATCC 16**

Grade 4.5 minimum 40 hours

### **Physical properties**

Pilling ASTM D3511 Class 4

Breaking Strength ASTM D5034 warp 278 / weft 356 lbs

Seam Slippage ASTM D4034 warp 99 / weft 93 lbs

### **Abrasion ASTM D4966**

45.000 cycles Martaindale – High Traffic

### **Characteristics of linen**

Minor irregularities such as knots or slubs

Fabric including vegetable parts

### **Quality benefits**

Complies with Möbelfakta

## **Environmental benefits**

Follow the EU Ecolabel dye restrictions incl. AZO dye and heavy metal restrictions

No use of halogen based flame retardants (incl. brominated and chlorinated)

REACH compliant

Californian Proposition 65 list compliant

LBC Red list compliant

## **Green building certificates**

Greenguard Gold: Low chemical emission

Health Product Declaration (HPD): Declaring textile content and substance

## **Country of origin**

Turkey

## **Launch**

2019

## **Warranty**

10 years. See terms and conditions on kvadrat.dk

Kvadrat packaging and cardboard is recyclable. Cardboard material is FSC certified and / or contains recycled content.

For further information

[www.kvadrat.dk/en/sahco](http://www.kvadrat.dk/en/sahco)