

# SAHCO

1831



## Firo

Type: Upholstery

Composition: 80% wool, 16% polyester, 4% nylon

Yarn type: Worsted

Binding: Jacquard

Width: Approx. 144 cm, 56.7 inches

Weight: Approx. 680 g/lin.m, 22 oz/ly

Repeat: Depends on colour, see last page for details

Foreign fibres may occur

Colour difference may occur

Cleaning: Vacuum clean frequently, ideally every week.

Remove stains as soon as they occur, with clean warm water or sparkling water. Extraction clean when necessary. Extraction cleaning might dissolve water based glue. Pay attention to temperature and amount of cleaning fluid.

Disinfection, see [kvadrat.dk/en/sahco](http://kvadrat.dk/en/sahco)



10 year  
warranty



## Abrasion

Approx. 100.000 Martindale rubs, EN ISO 12947

## Pilling

Note 4-5, EN ISO 12945

## Seam slippage

Seam parallel to warp: 5.0 mm parallel to weft: 6.0 mm

EN ISO 13 936-2 180 Newton

## Snagging

Grade 4-5 ASTM D3939, grade 1-5, 5 best grade

## Lightfastness

Note 5-8 ISO 105-Bo2

## Fastness to rubbing

Dry note 4-5 ISO 105-X12

Wet note 4-5 ISO 105-X12

## Airflow

183 Pa s/m EN 9053-1

## Flame resistance

AS/NSZ 3837 class 3

BS 5852 Crib 5 with treatment \*

BS 5852 Part 1

BS 7176 Low Hazard

EN 1021-1/2

IMO FTP Code 2010 Part 8

NF D 60 013

SN 198 898 5.3 with treatment \*

UNI 9175 IIM

US Cal. Bull. 117-2013

Free from added flame-retardant chemicals as standard

*\* To pass this test flame retardant treatment is necessary.*

*We are looking into more environmental friendly alternatives but for now, the external finisher may use a treatment containing halogen-based flame retardants*

# SAHCO

1831

## **ACT Guidelines Woven fabrics**

### **Dry & Wet Crocking AATCC 8**

Dry Crocking: Grade 4.5-5.0

Wet Crocking: Grade 4.0-5.0

### **Colour Fastness to Light AATCC 16**

Grade 4.5-5.0 minimum 40 hours

### **Physical properties**

Pilling Class 4-5 ASTM D4970

Breaking Strength warp 178 / weft 271 lbs, ASTM D5034

Seam Slippage warp 23.5 / weft 28 lbs, ASTM D4034

### **Abrasion ASTM D4966**

100.000 cycles Martindale – High Traffic / Public Spaces

### **Quality benefits**

Complies with Möbelfakta

## **Environmental benefits**

Regenerative fibres

Free of intentionally added PFAS

REACH compliant

Californian Proposition 65 list compliant

LBC Red list compliant

Healthier Hospitals compliant

## **Green building certificates**

Greenguard Gold: Low chemical emission

Health Product Declaration (HPD): Declaring textile content and substance

## **Country of origin**

Norway

## **Launch**

2026

## **Warranty**

10 years. See terms and conditions on kvadrat.dk

Kvadrat packaging and cardboard is recyclable. Cardboard material is FSC certified and / or contains recycled content.

For further information

[kvadrat.dk/en/sahco](https://kvadrat.dk/en/sahco)

# SAHCO

1831

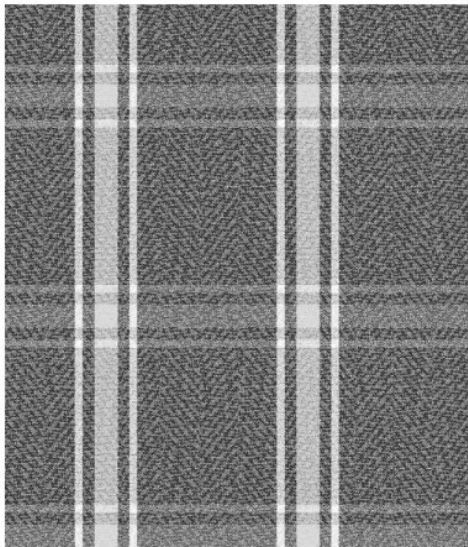
## Repeat sizes

Solid colours, no repeat : 100, 110, 160, 180, 190, 230, 260, 290, 340, 610, 650, 980

Col. 265, 785 955: app. 11" (28 cm) V, app. 10.2" (26 cm) H

Col. 185, 655, 985: app. 11" (28 cm) V, app. 10.6" (27 cm) H

Check A



Check B

