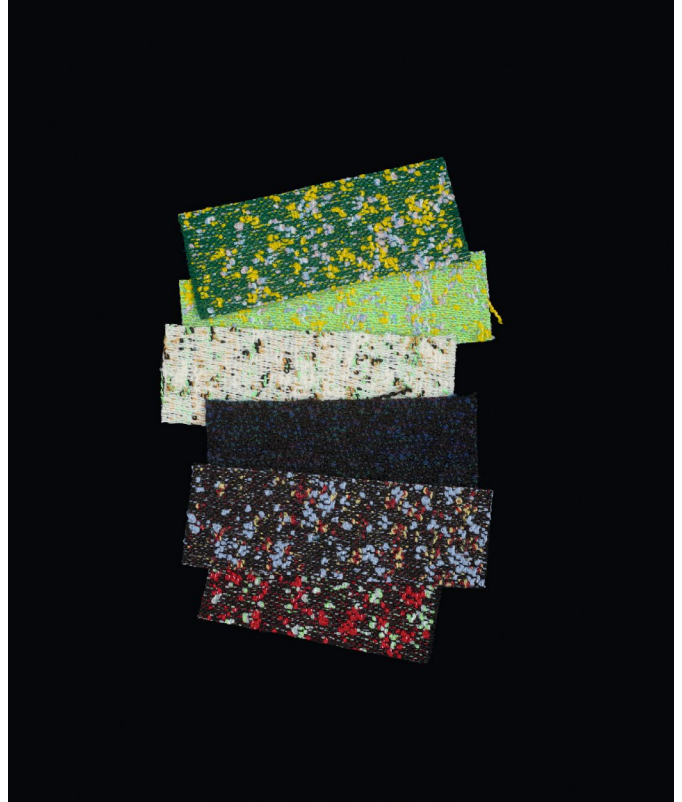
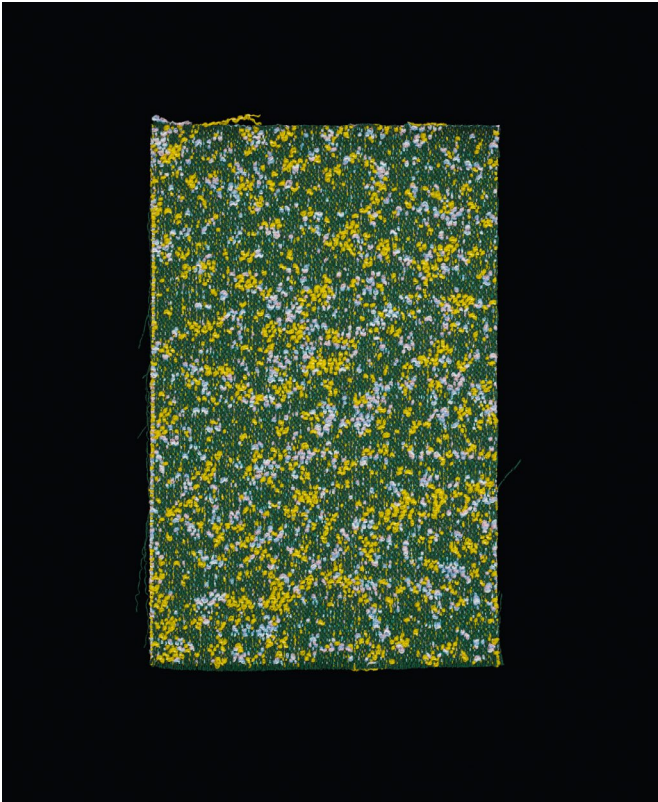


## KVADRAT/RAF SIMONS



### ATOM

Design: Raf Simons

Type: Upholstery

Composition: 90% new wool, 8% nylon, 2% polyester

Yarn type: Worsted

Binding: Jacquard

Width: Approx. 140 cm, 54 inches

Weight: Approx. 960 g/lin.m, 31 oz/ly

Repeat: None

Cleaning: Vacuum clean frequently, ideally every week. Remove stains as soon as they occur, with clean warm water or sparkling water. Extraction clean when necessary. Extraction cleaning might dissolve water-based glue. Pay attention to temperature and amount of cleaning fluid.

Disinfection, see kvadrat.dk

More info: Care and maintenance kvadrat.dk



10 year warranty



### Abrasion

Approx. 65.000 Martindale rubs, EN ISO 12947

*Abrasion test results exceeding ACT performance guidelines are not an indicator of product lifespan. Multiple factors affect fabric durability and appearance retention*

### Pilling

Note 4, EN ISO 12945

### Seam slippage

Seam parallel to warp: 2.5 mm parallel to weft: 1.5 mm  
EN ISO 13 936-2 180 Newton

### Lightfastness

Note 7 ISO 105-B02

### Fastness to rubbing

Dry note 4-5 ISO 105-X12

Wet note 3-5 ISO 105-X12

### Flame resistance

AS/NZS 1530.3  
ASTM E84 Class B adhered  
ASTM E84 Class B unadhered  
BS 5852 crib 5 with treatment \*  
BS 5852 ignition source 3  
BS 5852 part 1  
EN 1021-1/2  
IMO FTP Code 2010 Part 8  
NF D 60 013  
ÖNORM B1/Q1  
SN 198 898 5.3 with treatment \*  
UNI 9175 1IM  
US Cal. Bull. 117-2013

Free from added flame-retardant chemicals as standard

*\* To pass this test flame retardant treatment is necessary.  
We are looking into more environmentally friendly  
alternatives but for now, the external finisher may use a  
treatment containing halogen-based flame retardants*

### ACT Guidelines Woven fabrics

#### Flammability

US Cal. Bull. 117-2013

#### Dry & Wet Crocking

Dry Crocking: Grade 4.5

Wet Crocking: Grade 4.5

#### Colour Fastness to Light

Grade 5.0 minimum 40 hours

#### Physical properties

Pilling Class 4

Breaking Strength warp 163 / weft 206 lbs.

Seam Slippage warp 33.5 / weft 113 lbs.

#### Abrasion

65.000 cycles Martindale – High Traffic / Public Spaces

### Quality benefits

Complies with Möbelfakta

### Environmental benefits

Follow the EU Ecolabel dye restrictions incl. AZO dye and heavy metal restrictions

No content of PFCs or 'PFAS'

REACH compliant

Californian Proposition 65 list compliant

LBC Red list compliant

Healthier Hospitals compliant

### Green building certificates

Greenguard Gold: Low chemical emission

Environmental Product Declaration (EPD): 3rd Party Verified.

ISO 14025 & EN 15804. Developed in accordance with the European standard EN 15804+A2.

Health Product Declaration (HPD): Declaring textile content and substance

### Country of origin

Norway

### Warranty

10 years. See terms and conditions on kvadrat.dk

Kvadrat packaging and cardboard is recyclable. Cardboard material is FSC certified and / or contains recycled content.

For further information

kvadrat.dk