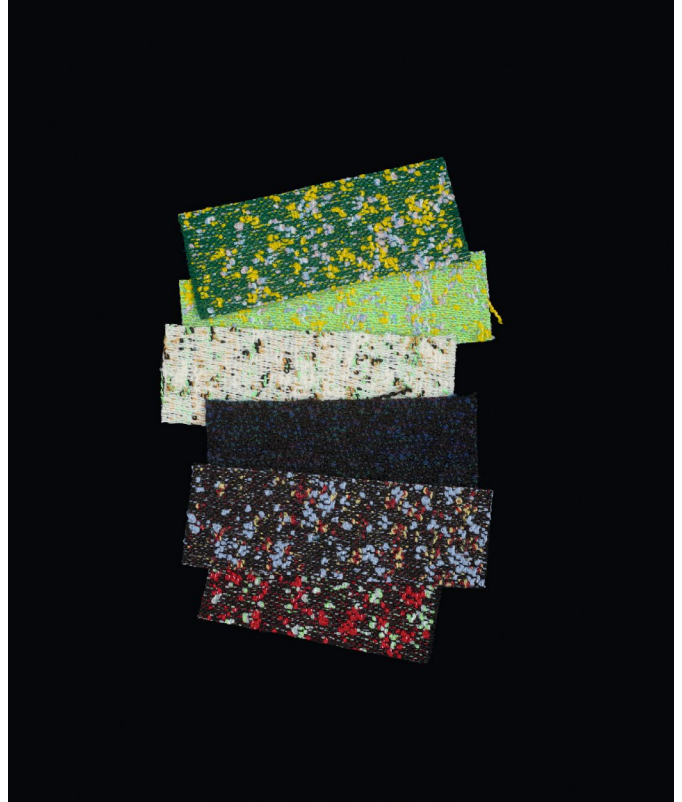
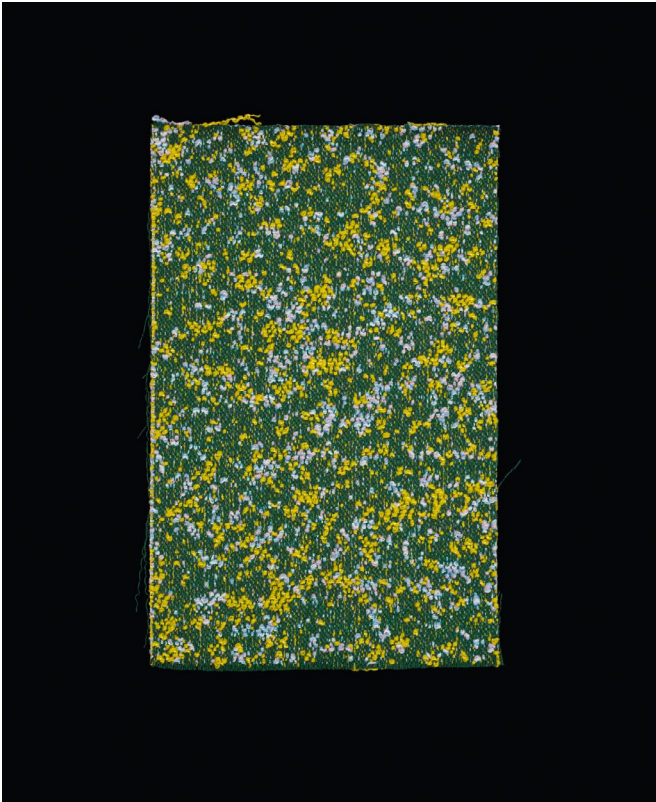


KVADRAT/RAF SIMONS



ATOM

Design: Raf Simons

Type: Upholstery

Composition: 90% new wool, 8% nylon, 2% polyester

Yarn type: Worsted

Binding: Jacquard

Width: Approx. 140 cm, 54 inches

Weight: Approx. 960 g/lin.m, 31 oz/ly

Repeat: None

Foreign fibres may occur

Colour difference may occur

Cleaning: Vacuum clean frequently, ideally every week. Remove stains as soon as they occur, with clean warm water or sparkling water. Extraction clean when necessary. Extraction cleaning might dissolve water-based glue. Pay attention to temperature and amount of cleaning fluid.

Disinfection, see kvadrat.dk

More info: Care and maintenance kvadrat.dk



10 year warranty



Abrasion

Approx. 65.000 Martindale rubs, EN ISO 12947

Abrasion test results exceeding ACT performance guidelines are not an indicator of product lifespan. Multiple factors affect fabric durability and appearance retention

Pilling

Note 4, EN ISO 12945

Seam slippage

Seam parallel to warp: 2.5 mm parallel to weft: 1.5 mm
EN ISO 13 936-2 180 Newton

Lightfastness

Note 7 ISO 105-B02

Fastness to rubbing

Dry note 4-5 ISO 105-X12

Wet note 3-5 ISO 105-X12

Flame resistance

AS/NZS 1530.3
ASTM E84 Class B adhered
ASTM E84 Class B unadhered
BS 5852 crib 5 with treatment *
BS 5852 ignition source 3
BS 5852 part 1
EN 1021-1/2
IMO FTP Code 2010 Part 8
NF D 60 013
ÖNORM B1/Q1
SN 198 898 5.3 with treatment *
UNI 9175 1IM
US Cal. Bull. 117-2013

Free from added flame-retardant chemicals as standard

** To pass this test flame retardant treatment is necessary.
We are looking into more environmentally friendly
alternatives but for now, the external finisher may use a
treatment containing halogen-based flame retardants*

ACT Guidelines Woven fabrics

Flammability

US Cal. Bull. 117-2013

Dry & Wet Crocking

Dry Crocking: Grade 4.5

Wet Crocking: Grade 4.5

Colour Fastness to Light

Grade 5.0 minimum 40 hours

Physical properties

Pilling Class 4

Breaking Strength warp 163 / weft 206 lbs.

Seam Slippage warp 33.5 / weft 113 lbs.

Abrasion

65.000 cycles Martindale – High Traffic / Public Spaces

Quality benefits

Complies with Möbelfakta

Environmental benefits

Follow the EU Ecolabel dye restrictions incl. AZO dye and heavy metal restrictions

No content of PFCs or 'PFAS'

REACH compliant

Californian Proposition 65 list compliant

LBC Red list compliant

Healthier Hospitals compliant

Green building certificates

Greenguard Gold: Low chemical emission

Environmental Product Declaration (EPD): 3rd Party Verified.

ISO 14025 & EN 15804. Developed in accordance with the European standard EN 15804+A2.

Health Product Declaration (HPD): Declaring textile content and substance

Country of origin

Norway

Warranty

10 years. See terms and conditions on kvadrat.dk

Kvadrat packaging and cardboard is recyclable. Cardboard material is FSC certified and / or contains recycled content.

For further information

kvadrat.dk