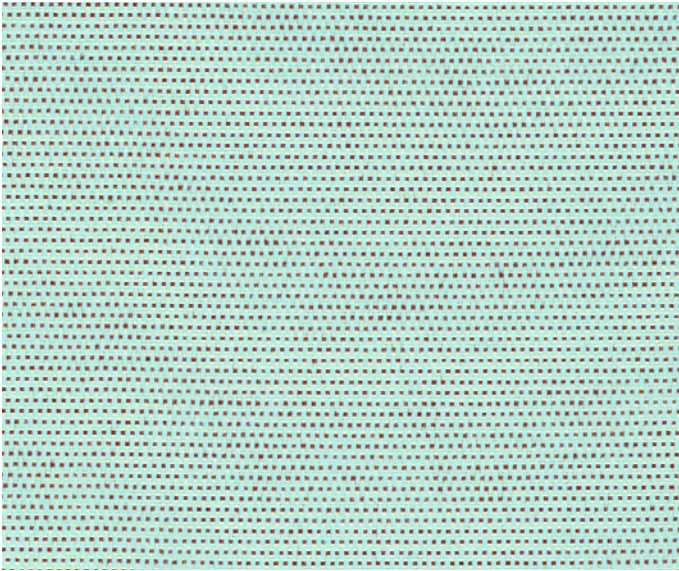


**Patio Outdoor**  
Karina Nielsen Rios



**kvadrat**



## Patio Outdoor

*Patio Outdoor* is an upholstery textile developed for outdoors, which offers exceptional colour vibrancy. Designed by Karina Nielsen Rios, it is made with a highly durable, specially developed Trevira CS yarn.

A result of 3 years intensive research, *Patio Outdoor* features a fluorocarbon-free, environmentally-focused finish, which is water-repellent and fast-drying. It also provides resistance against chlorine, seawater and artificial weathering and is flame-retardant. In addition to its technical features, it also stands out for a soft touch compared to other outdoor fabrics.

*Patio Outdoor* has a subtle structure, which combines two coloured yarns in the warp and one in the weft. Depending on the level of contrast between the colours, *Patio Outdoor* appears either almost unicoloured or more textured.

Its versatile palette brings a fresh, sporty perspective on colours to outdoors textiles. It combines natural and neutral nuances, as well as bold highlight tones.

*Patio Outdoor* is suitable for all outdoor spaces, as well as other areas, like spas and indoor pools, where high-humidity and chlorine are a factor. In addition to furniture, it can also be used for screens, parasols and umbrellas.

### **Karina Nielsen Rios**

Based in Copenhagen, Karina Nielsen Rios studied fine weaving and textile design at the Danish Design School, the Philadelphia College of Textiles and Science, Jette Nevers' textile studio and Skals Håndarbejdsseminarium (VIA University College).

Karina Nielsen Rios's sleek, cool work combines aesthetic insight, craftsmanship and a desire to innovate with high-tech materials. It often sits at the cutting-edge of textile design and has featured in several exhibitions and galleries.

For further information, please contact [press@kvadrat.org](mailto:press@kvadrat.org)

[kvadrat.dk](http://kvadrat.dk)