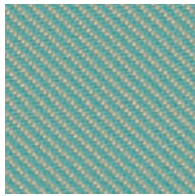


Reflect

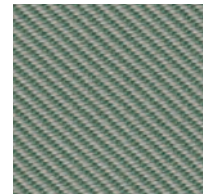
**kvadrat**



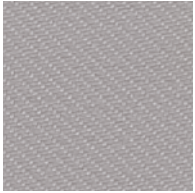
204



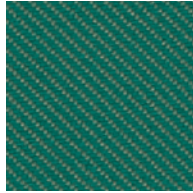
824



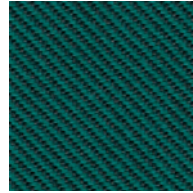
924



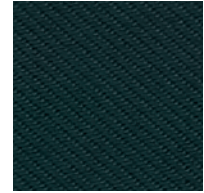
104



964



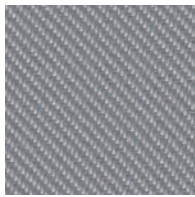
984



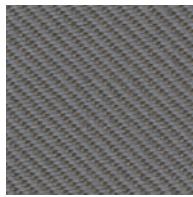
994



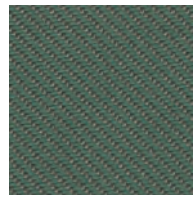
114



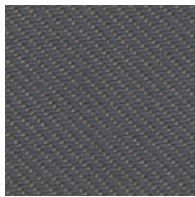
124



154



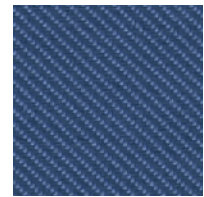
944



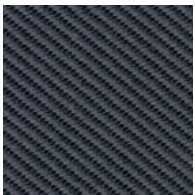
164



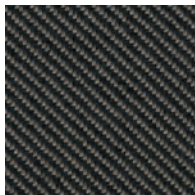
714



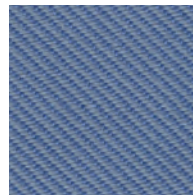
774



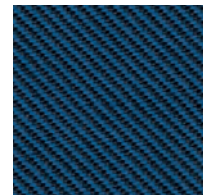
174



184

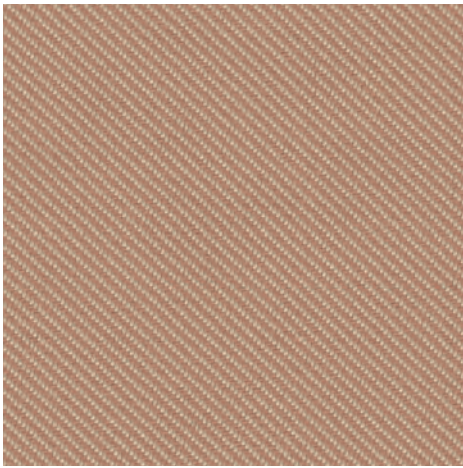


744

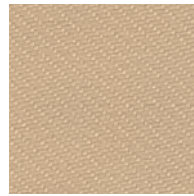


884

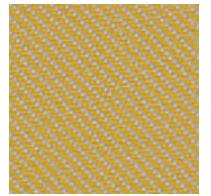
Reflect



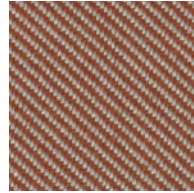
224



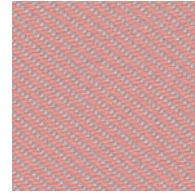
404



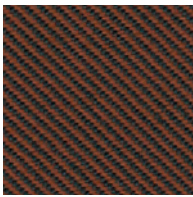
434



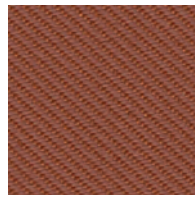
444



614



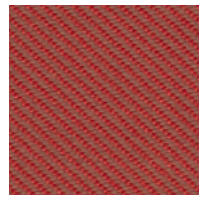
274



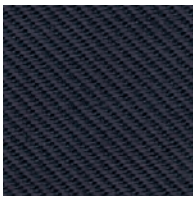
464



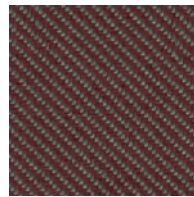
344



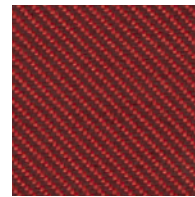
564



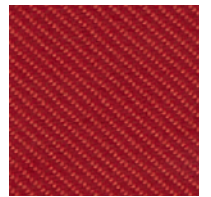
694



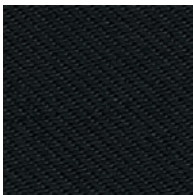
374



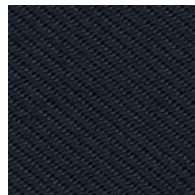
574



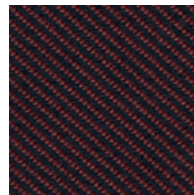
644



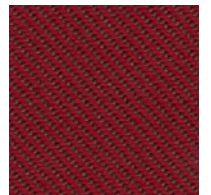
194



794



384



674



## Reflect

Designed by Patricia Urquiola

### DK

**Anvendelse** Kontorer, hoteller, institutioner, private indretninger. Stor slidstyrke.

**Beskrivelse** 100% post-consumer recycled polyester. Bredde ca. 140 cm. Vægt ca. 430 g/lbm. Garnfarvet. Nuanceforskel kan forekomme.

#### Ægkant ↓

**Slidstyrke:** Ca. 100.000 slidbevægelser efter Martindale metoden. EN ISO 12947. **Lysægthed** (ISO) 6-7. **Pilling** (EN ISO) 4. **Gnidægthed** (ISO) tør 4-5, våd 4-5. **Lydabsorption** (EN ISO 354) 0.45/Class D (fladt), 0.70/Class B (foldet).

**Airflow** 2430 Pa s/m. **Flammesikring:** AS/NZS 3837 Class 1. ASTM E84 class A. ASTM E84 class B limet. BS 5852 Crib 5 med flammesikring. BS 5852 part 1 med flammesikring. EN 1021-1/2. US Cal. Bull. 117-2013. (Kopi af testrapport kan rekvireres).

**Vedligeholdelse** Se ISO symboler. Krypning ca. 2% ved vask 60°C. Desinfektion, se [www.kvadrat.dk](http://www.kvadrat.dk).

### UK/US

**Application** Offices, hotels, institutions, domestic use. Great durability.

**Description** 100% post-consumer recycled polyester. Width app. 55 inches (140 cm). Weight app. 13.8 oz/ly (430 g/lin.m). Yarn dyed. Colour differences may occur.

#### Selvedge/Direction ↓

**Abrasion:** App. 100,000 rubs acc. to the Martindale method. EN ISO 12947.

**Lightfastness** (ISO) 6-7. **Pilling** (EN ISO) 4.

**Fastness to rubbing** (ISO) dry 4-5, wet 4-5.

**Sound absorption** (EN ISO 354) 0.45/Class D (flat), 0.70/Class B (waved). **Airflow** 2430 Pa s/m. **Flame resistance:** AS/NZS 3837 Class 1. ASTM E84 class A. ASTM E84 class B adhered. BS 5852 Crib 5 with treatment. BS 5852 part 1 with treatment. EN 1021-1/2. US Cal. Bull. 117-2013. (Copy of test report available).

**Care** Please see the ISO symbols. Shrinkage app. 2% when washed at 60°C. Disinfection, see [www.kvadrat.dk](http://www.kvadrat.dk).

### DE

**Anwendungsbereich** Büros, Hotels, Objektbereich, privater Wohnbereich. Hohe Strapazierfähigkeit.

**Beschreibung** 100% post-consumer recycled Polyester. Breite ca. 140 cm. Gewicht ca. 430 g/m. Garngefärbt. Farbunterschiede können vorkommen.

#### Webkant ↓

**Scheuerfestigkeit:** Ca. 100.000 Scheuerhübe nach der Martindale Methode. EN ISO 12947.

**Lichtechtheit** (ISO) 6-7. **Pilling** (EN ISO) 4.

**Reibechtheit** (ISO) trocken 4-5, nass 4-5.

**Schallabsorption** (EN ISO 354) 0.45/Class D (glatt), 0.70/Class B (gefaltet). **Airflow** 2430 Pa s/m. **Flammenschutz:** AS/NZS 3837 Class 1. ASTM E84 class A. ASTM E84 class B verklebt. BS 5852 Crib 5 mit Ausrüstung. BS 5852 part 1 mit Ausrüstung. EN 1021-1/2. US Cal. Bull. 117-2013. (Testbericht verfügbar).

**Pflege** Siehe ISO Pflegesymbole.

Wascheinlauf ca. 2% bei 60°C. Desinfektion, siehe [www.kvadrat.dk](http://www.kvadrat.dk).

### NL

**Toepassing** Kantoren, hotels, instellingen, de privésfeer. Uitstekende slijtvastheid.

**Omschrijving** 100% post-consumer recycled polyester. Breedte ca. 140 cm. Gewicht ca. 430 gr/str. m. Garengeverfd. Kleurverschillen kunnen optreden.

#### Zelfkant ↓

**Slijtvastheid:** Ca. 100.000 toeren Martindale. EN ISO 12947. **Lichtechtheid** (ISO) 6-7. **Pilling** (EN ISO) 4. **Wrijfechtheid** (ISO) droog 4-5, nat 4-5. **Geluidsabsorptie** (EN ISO 354) 0.45/Class D (vlak), 0.70/Class B (geplooid). **Airflow** 2430 Pa s/m. **Brandwerendheid:** AS/NZS 3837 Class 1. ASTM E84 class A. ASTM E84 class B gelijmd. BS 5852 Crib 5 part 1 met behandeling. BS 5852 part 1 met behandeling. EN 1021-1/2. US Cal. Bull. 117-2013. (Op aanvraag sturen wij u graag een kopie van het testrapport toe).

**Onderhoud** Zie de ISO symbolen. Krimp ca. 2% bij 60°C. Desinfectie, [www.kvadrat.dk](http://www.kvadrat.dk).

### FR

**Domaine d'utilisation** Tissu d'ameublement pour aménagement privé et public. Grande résistance.

**Description** 100% post-consumer polyester recyclé. Largeur env. 140 cm. Poids env. 430 g/m lg. Teinture sur fil. Ecart de coloris possibles.

#### Lisière ↓

**Résistance à l'abrasion:** Env. 100.000 révolutions selon le procédé Martindale. EN ISO 12947. **Résistance à la lumière** (ISO) 6-7.

**Boulochage** (EN ISO) 4. **Résistance au frottement** (ISO) sec 4-5, mouillé 4-5.

**Absorption acoustique** (EN ISO 354)

0.45/Class D (à plat), 0.70/Class B (plié).

**Airflow** 2430 Pa s/m. **Normes au feu:** AS/NZS 3837 Class 1. ASTM E84 class A. ASTM E84 class B collé. BS 5852 Crib 5 avec traitement. BS 5852 part 1 avec traitement. EN 1021-1/2. US Cal. Bull. 117-2013. (La copie du compte rendu des tests est disponible sur demande).

**Entretien** Voir les symboles ISO.

Rétrécissement: Env. 2% pour lavage à 60°C.

Désinfection, voir [www.kvadrat.dk](http://www.kvadrat.dk).

### IT

**Destinazione d'uso** Rivestimento per imbottiti casa e contract. Alta resistenza all'abrasione.

**Caratteristiche** 100% post-consumer poliestere riciclato. Altezza circa 140 cm. Peso circa 430 gr/mtl. Tinto in filo. Possibili differenze per colore.

#### Cimosa ↓

**Abrasion:** circa 100.000 cicli/metodo Martindale. EN ISO 12947. **Resistenza alla luce** (ISO) 6-7. **Pilling** (EN ISO) 4. **Resistenza allo sfregamento** (ISO) condizione a secco 4-5, condizione umido 4-5. **Assorbimento acustico** (EN ISO 354) 0.45/Class D (tenda a pannello (tesa)), 0.70/Class B (tenda arricciata). **Airflow** 2430 Pa s/m. **Ignifugazione:** AS/NZS 3837 Class 1. ASTM E84 class A. ASTM E84 class B incollato. BS 5852 Crib 5 trattato ignifugo. BS 5852 part 1 trattato ignifugo. EN 1021-1/2. US Cal. Bull. 117-2013. (Disponibile copia del test).

**Manutenzione** Per favore seguire simboli ISO. Restringimento 2% quando lavata 60°C. Per disinfectare, vedi il sito [www.kvadrat.dk](http://www.kvadrat.dk).

### ES

**Aplicación** Oficinas, hoteles, instituciones, uso doméstico. Gran resistencia al desgaste.

**Descripción** 100% post-consumer poliéster reciclado. Anchura aprox. 140 cm. Peso aprox. 430 gr/ml. Hilo teñido. Posibles variaciones de color.

#### Filo ↓

**Resistencia al desgaste:** Aprox. 100.000 ciclos según el método Martindale. EN ISO 12947.

**Resistencia a la luz** (ISO) 6-7. **Relleno** (EN ISO)

4. **Solidez al frotamiento** (ISO) seco 4-5, mojado 4-5. **Absorción acústica** (EN ISO 354)

0.45/Class D (estor), 0.70/Class B (cortina).

**Airflow** 2430 Pa s/m. **Resistencia al fuego:**

AS/NZS 3837 Class 1. ASTM E84 class A. ASTM E84 class B adherido. BS 5852 Crib 5 con tratamiento. BS 5852 part 1 con tratamiento. EN 1021-1/2. US Cal. Bull. 117-2013. (Copia del informe de ensayos disponible).

**Mantenimiento** Consulte los símbolos ISO.

Encogimiento aprox. 2% en lavado a 60°C.

Desinfección, visita [www.kvadrat.dk](http://www.kvadrat.dk).

### JP

**用途** オフィス、ホテル、各種施設、住宅インテリア。耐耗性大。

**詳細** 100% 再生材を利用したポリエステル。幅: 140 cm。重量: 1mあたり約430 g。糸染め。色彩ニューアンスに多少の違いが生じる可能性あり。

#### 耳、ふち ↓

#### テスト

**磨耗:** マーチンデール法により摩擦運動約100,000回。EN ISO 12947. **色褪せ保証:** (ISO) 6-7. **ピリング** (EN ISO) 4. **摩擦保証:** (ISO) 乾燥状態 4-5、濡れた状態 4-5. **吸音率** (EN ISO 354) 0.45/Class D (パネル状)、0.70/Class B (ドレープ状). **気流:** 2430 Pa s/m. **耐炎性:** AS/NZS 3837 Class 1. ASTM E84 class A. ASTM E84 class B 耐火性レベル1。特殊耐炎処理を行うことにより、BS 5852 Crib 5 に到達可能。特殊耐炎処理を行うことにより、BS 5852 part 1 に到達可能。EN 1021-1/2. US Cal. Bull. 117-2013. (テストレポートのコピー入手可能。)

**手入れ** ISO シンボル参照。60°C で洗浄した場合、縮み約2%。消毒について? [www.kvadrat.dk](http://www.kvadrat.dk)まで参照ください。



10 year warranty



Quality and environmental system accreditation according to ISO 9001 and ISO 14001.

\*ACT® Registered Certification Marks

Contact and further information [www.kvadrat.dk](http://www.kvadrat.dk)

US contact info: 1-800-620-9309