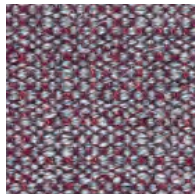


Foss

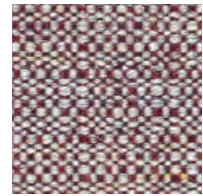
kvadrat



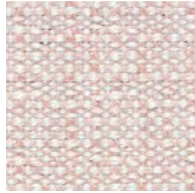
692



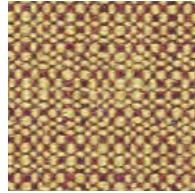
672



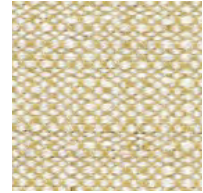
632



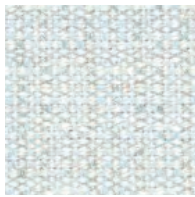
612



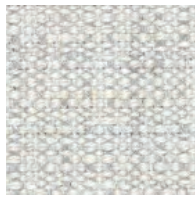
472



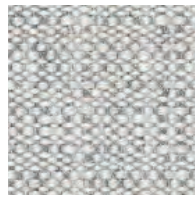
412



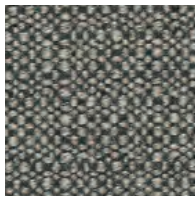
902



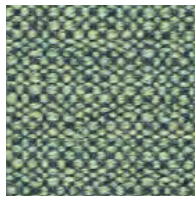
102



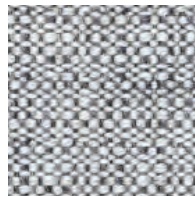
112



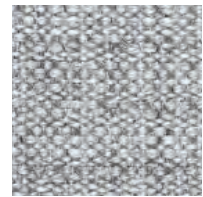
952



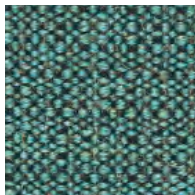
932



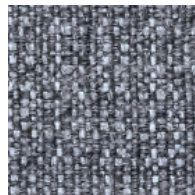
132



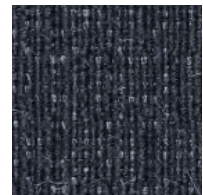
142



972

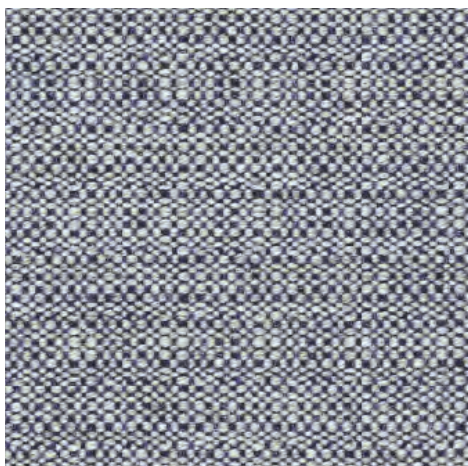


172

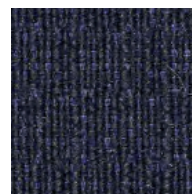


192

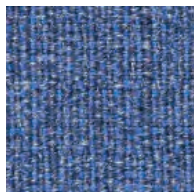
Foss



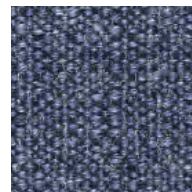
732



792



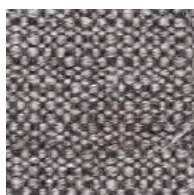
752



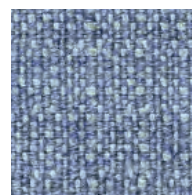
772



202



372



722



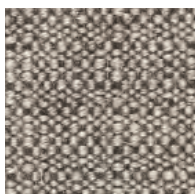
232



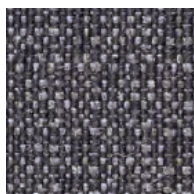
212



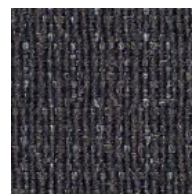
242



272



382



392

Foss

Designed by Louise Sigvardt & Tone Barnung

DK

Anvendelse Kontorer, hoteller, institutioner, private indretninger. Stor slidstyrke.
Beskrivelse 76% ny uld, kamgarn, 11% viskose, 8% nylon, 5% hør. Bredde ca. 145 cm. Vægt ca. 500 g/lbm. Materialefarvet. I lyse farver kan fremmede fibre forekomme. Nuanceforskel kan forekomme.

Ægkant ⇅

Slidstyrke: Ca. 100.000 slidbevægelser efter Martindale metoden EN ISO 12947. **Lysægthed** (ISO) 6-7. **Pilling** (EN ISO) 4. **Gnidægthed** (ISO) tør 4-5, våd 3-5. **Flammesikring:** AS/NZS 3837 Class 2. ASTM E84 Class A limet. ASTM E84 Class B hæftet. BS 5852 Crib 5 med flammesikring. BS 5852 part 1. EN 1021-1/2. IMO FTP Code 2010:Part 8. NF D 60 013. SN 198 898 5.3 med flammesikring. US Cal. Bull. 117-2013. (Kopi af testrapport kan rekvireres).

Vedligeholdelse Se ISO symboler. Desinfektion, se kvadrat.dk.

UK/US

Application Offices, hotels, institutions, domestic use. Great durability.

Description 76% new wool, worsted, 11% viscose, 8% nylon, 5% linen. Width app. 57 inches (145 cm). Weight app. 500 g/lin.m, 16.0 oz/ly. Material dyed. Foreign fibres may occur in light colours. Colour differences may occur.

Selvedge/Direction ⇅

Abrasion: App. 100,000 rubs acc. to the Martindale method EN ISO 12947*. **Lightfastness** (ISO) 6-7. **Pilling** (EN ISO) 4. **Fastness to rubbing** (ISO) dry 4-5, wet 3-5. **Flame resistance:** AS/NZS 3837 Class 2. ASTM E84 Class A adhered. ASTM E84 Class B unadhered. BS 5852 Crib 5 with treatment. BS 5852 part 1. EN 1021-1/2. IMO FTP Code 2010:Part 8. NF D 60 013. SN 198 898 5.3 with treatment. US Cal. Bull. 117-2013. (Copy of test report available).

Care Please see the ISO symbols. Disinfection, see kvadrat.dk.

DE

Anwendungsbereich Büros, Hotels, Objektbereich, privater Wohnbereich. Hohe Strapazierfähigkeit.

Beschreibung 76% Schurwolle, Kammgarn, 11% Viskose, 8% Nylon, 5% Leinen. Breite ca. 145 cm. Gewicht ca. 500 g/m. Materialgefärbt. In hellen Farben können Fremdfasern vorkommen. Farbunterschiede können vorkommen.

Webkant ⇅

Scheuerfestigkeit: Ca. 100.000 Scheuerhübe nach der Martindale Methode EN ISO 12947. **Lichtechtheit** (ISO) 6-7. **Pilling** (EN ISO) 4. **Reibechtheit** (ISO) trocken 4-5, nass 3-5. **Flammschutz:** AS/NZS 3837 Class 2. ASTM E84 Class A verklebt. ASTM E84 Class B unverklebt. BS 5852 Crib 5 mit Ausrüstung. BS 5852 part 1. EN 1021-1/2. IMO FTP Code 2010:Part 8. NF D 60 013. SN 198 898 5.3 mit Ausrüstung. US Cal. Bull. 117-2013. (Testbericht verfügbar).

Pflege Siehe ISO Pflegesymbole. Desinfektion, siehe kvadrat.dk.

NL

Toepassing Kantoren, hotels, instellingen, de privéfeer. Uitstekende slijtvastheid.
Omschrijving 76% scheerwol, kamgaren, 11% viscose, 8% nylon, 5% linnen. Breedte ca. 145 cm. Gewicht ca. 500 gr/str. m. Garengerfvd.

Afwijkende vezels kunnen voorkomen in lichte kleuren. Kleurverschillen kunnen optreden.

Zelfkant ⇅

Slijtvastheid: Ca. 100.000 toeren Martindale EN ISO 12947. **Lichtechtheid** (ISO) 6-7. **Pilling** (EN ISO) 4. **Wrijftechtheid** (ISO) droge 4-5, natte 3-5. **Brandwerendheid:** AS/NZS 3837 Class 2. ASTM E84 Class A gelijmd. ASTM E84 Class B ongelijmd. BS 5852 Crib 5 met behandeling. BS 5852 part 1. EN 1021-1/2. IMO FTP Code 2010:Part 8. NF D 60 013. SN 198 898 5.3 met behandeling. US Cal. Bull. 117-2013. (Op aanvraag sturen wij u graag een kopie van het testrapport toe). **Onderhoud** Zie de ISO symbolen. Desinfectie, kvadrat.dk.

FR

Domaine d'utilisation Tissu d'ameublement pour aménagement privé et public. Grande résistance.

Description 76% laine vierge, peignée, 11% viscose, 8% nylon, 5% lin. Largeur env. 145 cm. Poids env. 500 g/m lg. Teinture en bourre. Dans les couleurs claires, présence de fibres étrangères. Ecart de coloris possibles.

Lisière ⇅

Résistance à l'abrasion: Env. 100.000 révolutions selon le procédé Martindale EN ISO 12947. **Résistance à la lumière** (ISO) 6-7. **Boulochage** (EN ISO) 4. **Résistance au frottement** (ISO) sec 4-5, mouillé 3-5. **Normes au feu:** AS/NZS 3837 Class 2. ASTM E84 Class A collé. ASTM E84 Class B non collé. BS 5852 Crib 5 avec traitement. BS 5852 part 1. EN 1021-1/2. IMO FTP Code 2010:Part 8. NF D 60 013. SN 198 898 5.3 avec traitement. US Cal. Bull. 117-2013. (La copie du compte rendu des tests est disponible sur demande).

Entretien Voir les symboles ISO. Désinfection, voir kvadrat.dk.

IT

Destinazione d'uso Rivestimento per imbottiti casa e contract. Alta resistenza all'abrasione.
Caratteristiche 76% lana vergine, pettinata, 11% viscosa, 8% nylon, 5% lino. Altezza circa 145 cm. Peso circa 500 gr/ml. Tinto in fiocco. Nei colori chiari possono essere presenti fibre di tonalità scure. Possibili differenze per colore.

Cimosa ⇅

Abrasion: Circa 100.000 cicli/metodo Martindale EN ISO 12947. **Resistenza alla luce** (ISO) 6-7. **Pilling** (EN ISO) 4. **Resistenza allo sfregamento** (ISO) condizione a secco 4-5, condizione umido 3-5. **Ignifugazione:** AS/NZS 3837 Class 2. ASTM E84 Class A incollato. ASTM E84 Class B non incollato. BS 5852 Crib 5 trattato ignifugo. BS 5852 part 1. EN 1021-1/2. IMO FTP Code 2010:Part 8. NF D 60 013. SN 198 898 5.3 trattato ignifugo. US Cal. Bull. 117-2013. (Disponibile copia del test).

Manutenzione Per favore seguire simboli ISO. Per disinfettare, vedi il sito kvadrat.dk.

ES

Aplicación Oficinas, hoteles, instituciones, uso doméstico. Gran resistencia al desgaste.
Descripción 76% lana virgen, peinada, 11% viscosa, 8% nilón, 5% lino. Anchura aprox. 145 cm. Peso aprox. 500 gr/ml. Teñido en material. En los colores claros puede haber fibras de otro color. Posibles variaciones de color.

Filo ⇅

Resistencia al desgaste: Aprox. 100.000 ciclos según el método Martindale EN ISO 12947. **Resistencia a la luz** (ISO) 6-7. **Relleño** (EN ISO) 4. **Solidez al frotamiento** (ISO) seco 4-5, mojado 3-5. **Resistencia al fuego:** AS/NZS 3837 Class 2. ASTM E84 Class A pegado. ASTM E84 Class B sin pegar. BS 5852 Crib 5 con tratamiento. BS 5852 part 1. EN 1021-1/2. IMO FTP Code 2010:Part 8. NF D 60 013. SN 198 898 5.3 con tratamiento. US Cal. Bull. 117-2013. (Copia del informe de ensayos disponible). **Mantenimiento** Consulte los símbolos ISO. Desinfección, visita kvadrat.dk.

JP

用途 オフィス、ホテル、各種施設、住宅インテリア。耐耗性大。
詳細 76% ニューウール、ウーステッド、11% ビスコース、8% ナイロン、5% リネン。幅:145cm。重量:1mあたり約500g。製品染め。明色の場合異質繊維が混ざる事あり。色彩ニューアンスに多少の違いが生じる可能性あり。
耳、ふち、⇅
テスト:
磨耗: マーチンデール法により摩擦運動約100,000回。EN ISO 12947. **色あせ保障:** (ISO) 6-7. **ピリング** (EN ISO) 4. **摩擦保証:** (ISO) 乾燥状態 4-5、濡れた状態 3-5. **耐炎性:** AS/NZS 3837 Class 2. ASTM E84 class A 耐火性レベル1. ASTM E84 Class B unadhered. 特殊耐炎処理を行うことにより、BS 5852 Crib 5 に到達可能。BS 5852 part 1. EN 1021-1/2. IMO FTP Code 2010:Part 8. NF D 60 013. 特殊耐炎処理を行うことにより、SN 198 898 5.3 に到達可能。US Cal. Bull. 117-2013. (テストレポートのコピー入手可能。)
手入れ
 ISO シンボル参照。消毒について?kvadrat.dkまで参照ください。

CN

适用范围 办公室、宾馆酒店、公共设施、居家使用。耐耗性大。
成分 76%新羊毛(精纺)、11%粘胶纤维、8%尼龙、5%亚麻。幅宽约57英寸(145cm)。重量约500克/延米。原材料染色面料。浅色面料可能会有外来纤维。颜色可能稍有色差。
图纹方向 ⇅
马丁代尔法约100,000转。EN ISO 12947. **光照色牢度** (ISO) 6-7. **起毛起球** (EN ISO) 4. **磨擦色牢度** (ISO) 干燥4-5, 湿3-5. **阻燃性:** AS/NZS 3837 Class 2. ASTM E84 Class A 防火等级1. ASTM E84 Class B unadhered. 特别耐火处理时BS 5852 Crib 5 可以满足。BS 5852 part 1. EN 1021-1/2. IMO FTP Code 2010:Part 8. NF D 60 013. 特别耐火处理时SN 198 898 5.3 可以满足。US Cal. Bull. 117-2013. (可提供测试报告副本)。 **维护** 请参照ISO标志。消毒请参阅kvadrat.dk。



10 year warranty



US contact info: 1-800-620-9309

Quality and environmental system accreditation according to ISO 9001 and ISO 14001.

* ACT® Registered Certification Marks

* Abrasion test results exceeding ACT performance guidelines are not an indicator of product lifespan. Multiple factors affect fabric durability and appearance retention.

Contact and further information www.kvadrat.dk