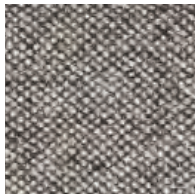
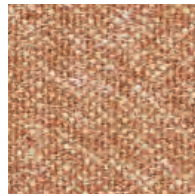


Melange Nap

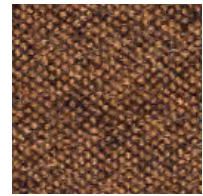
**kvadrat**



241



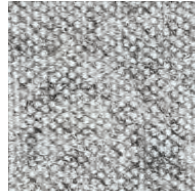
321



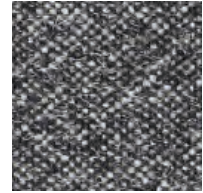
351



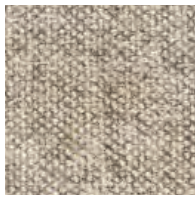
271



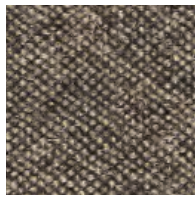
111



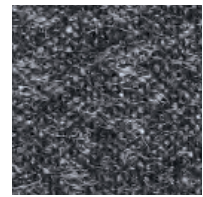
171



211



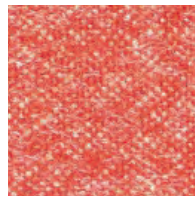
371



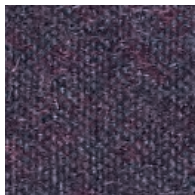
191



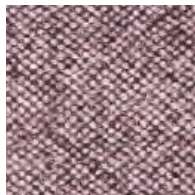
221



521



691

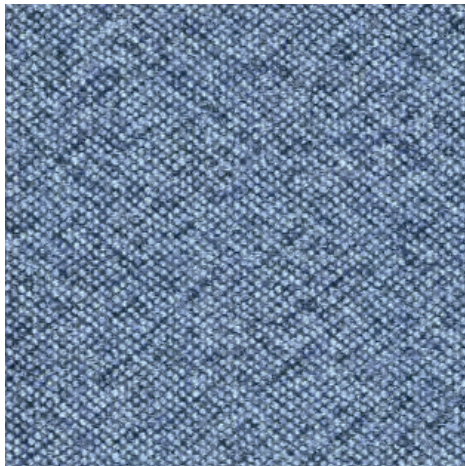


651

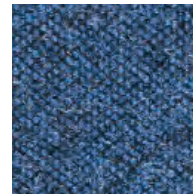


551

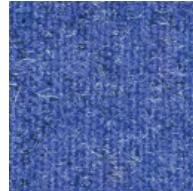
# Melange Nap



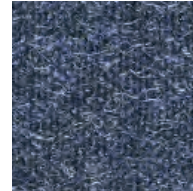
751



871



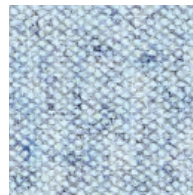
771



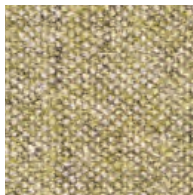
791



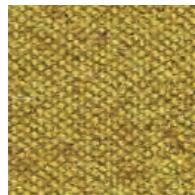
461



711



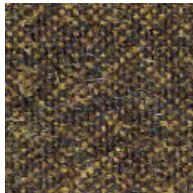
411



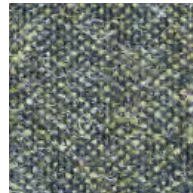
441



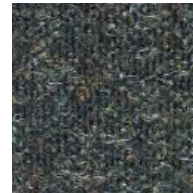
911



491



951



991

## Melange Nap

Designed by Akira Minagawa

### DK

**Anvendelse** Kontorer, hoteller, institutioner, private indretninger. Stor slidstyrke.

**Beskrivelse** 97% ny uld, kamgarn, 3% nylon. Bredde ca. 140 cm. Vægt ca. 440 g/lbm. Materialefarvet. Nuanceforskelle kan forekomme.

#### Ægkant ↓

**Slidstyrke:** Ca. 60.000 slidbevægelser efter Martindale metoden EN ISO 12947. **Lysægthed** (ISO) 6. **Pilling** (EN ISO) 3-4. **Gnidægthed** (ISO) tør 4-5, våd 4-5. **Lydabsorption** (EN ISO 354) 0.55/Class D (fladt), 0.80/Class B (foldet). **Airflow** 521 Pa s/m. **Flammesikring:** AS/NZS 3837 Class 2. ASTM E84 class A limet. ASTM E84 Class B hæftet. BS 5852 Crib 5 med flammesikring. BS 5852 ignition source 3. BS 5852 Part 1. EN 1021-1/2. IMO FTP Code 2010:Part 8. NF D 60 013. SN 198 898 5.3 med flammesikring. UNI 9175 11M. US Cal. Bull. 117-2013. (Kopi af testrapport kan rekvireres). **Vedligeholdelse** Se ISO symboler. Desinfektion, se kvadrat.dk.

### UK/US

**Application** Offices, hotels, institutions, domestic use. Great durability. **Description** 97% new wool, worsted, 3% nylon. Width app. 55 inches (140 cm). Weight app. 440 g/lin.m, 14.1 oz/ly. Material dyed. Colour differences may occur.

#### Selvedge/Direction ⇕

**Abrasion:** App. 60,000 rubs acc. to the Martindale method EN ISO 12947. **Lightfastness** (ISO) 6. **Pilling** (EN ISO) 3-4. **Fastness to rubbing** (ISO) dry 4-5, wet 4-5. **Sound absorption** (EN ISO 354) 0.55/Class D (flat), 0.80/Class B (waved). **Airflow** 521 Pa s/m. **Flame resistance:** AS/NZS 3837 Class 2. ASTM E84 class A adhered. ASTM E84 Class B unadhered. BS 5852 Crib 5 with treatment. BS 5852 ignition source 3. BS 5852 Part 1. EN 1021-1/2. IMO FTP Code 2010:Part 8. NF D 60 013. SN 198 898 5.3 with treatment. UNI 9175 11M. US Cal. Bull. 117-2013. (Copy of test report available).

**Care** Please see the ISO symbols. Disinfection, see kvadrat.dk.

### DE

**Anwendungsbereich** Büros, Hotels, Objectbereich, privaten Wohnbereich, Hohe Strapazierfähigkeit. **Beschreibung** 97% Schurwolle, Kammgarn. 3% Nylon. Breite ca. 140 cm. Gewicht ca. 440 g/m. Materialgefärbt. Farbunterschiede können vorkommen.

#### Webkant ↓

**Scheuerfestigkeit:** Ca. 60.000 Scheuerhübe nach der Martindale Methode EN ISO 12947. **Lichtechtheit** (ISO) 6. **Pilling** (EN ISO) 3-4. **Reibechtheit** (ISO) trocken 4-5, nass 4-5. **Schallabsorption** (EN ISO 354) 0.55/Class D (glatt), 0.80/Class B (gefaltet). **Airflow** 521 Pa s/m. **Flammenschutz:** AS/NZS 3837 Class 2. ASTM E84 class A verklebt. ASTM E84 Class B unverklebt. BS 5852 Crib 5 mit Ausrüstung. BS 5852 ignition source 3. BS 5852 Part 1. EN 1021-1/2. IMO FTP Code 2010:Part 8. NF D 60 013. SN 198 898 5.3 mit Ausrüstung. UNI 9175 11M. US Cal. Bull. 117-2013. (Testbericht verfügbar). **Pflege** Siehe ISO Pflegesymbole. Desinfektion, siehe kvadrat.dk.

### NL

**Toepassing** Kantoren, hotels, instellingen, de privéfeer. Uitstekende slijtvastheid.

**Omschrijving** 97% scheerwol, kamgaren, 3% nylon. Breedte ca. 140 cm. Gewicht ca. 440 gr/str.m. Materiaalgeverfd. Kleurverschillen kunnen optreden.

#### Zelfkant ↓

**Slijtvastheid:** Ca. 60.000 toeren Martindale EN ISO 12947. **Lichtechtheid** (ISO) 6. **Pilling** (EN ISO) 3-4. **Wrijfechtheid** (ISO) droge 4-5, natte 4-5. **Geluidsabsorptie** (EN ISO 354) 0.55/Class D (vlak), 0.80/Class B (geplooid). **Airflow** 521 Pa s/m. **Brandwerendheid:** AS/NZS 3837 Class 2. ASTM E84 class A gelijmd. ASTM E84 Class B ongelijmd. BS 5852 Crib 5 met behandeling. BS 5852 ignition source 3. BS 5852 Part 1. EN 1021-1/2. IMO FTP Code 2010:Part 8. NF D 60 013. SN 198 898 5.3 met behandeling. UNI 9175 11M. US Cal. Bull. 117-2013. (Op aanvraag storen wij u graag een kopie van het testrapport toe). **Onderhoud** Zie de ISO symbolen. Desinfectie, kvadrat.dk.

### FR

**Domaine d'utilisation** Tissu d'ameublement pour aménagement privé et public. Grande résistance.

**Description** 97% laine vierge, peigné, 3% nylon. Largeur env. 140 cm. Poids env. 440 g/m lg. Teinture en bourre. Ecart des coloris possibles.

#### Lisière ↓

**Résistance à l'abrasion:** Env. 60.000 révolutions selon le procédé Martindale EN ISO 12947. **Résistance à la lumière** (ISO) 6. **Boulochage** (EN ISO) 3-4. **Résistance au frottement** (ISO) sec 4-5, mouillé 4-5. **Absorption acoustique** (EN ISO 354) 0.55/Class D (à plat), 0.80/Class B (plié). **Airflow** 521 Pa s/m. **Normes au feu:** AS/NZS 3837 Class 2. ASTM E84 class A collé. ASTM E84 Class B non collé. BS 5852 Crib 5 avec traitement. BS 5852 ignition source 3. BS 5852 Part 1. EN 1021-1/2. IMO FTP Code 2010:Part 8. NF D 60 013. SN 198 898 5.3 avec traitement. UNI 9175 11M. US Cal. Bull. 117-2013. (La copie du compte rendu des tests est disponible sur demande). **Entretien** Voir les symboles ISO. Désinfection, voir kvadrat.dk.

### IT

**Destinazione d'uso** Rivestimenti per imbottiti, casa e contract. Alta resistenza all'abrasione. **Caratteristiche** 97% lana vergine, pettinata, 3% nylon. Altezza circa 140 cm. Peso circa 440 gr/ml. Tinto in fiocco. Possibili differenze per colore.

#### Cimosa ↓

**Resistenza all'abrasione:** circa 60.000 cicli/metodo Martindale EN ISO 12947. **Resistenza alla luce** (ISO) 6. **Pilling** (EN ISO) 3-4. **Resistenza allo sfregamento** (ISO) condizione a secco 4-5, condizione umido 4-5. **Absorbimento acustico** (EN ISO 354) 0.55/Class D (a pannello (tesa), 0.80/Class B (arricciata). **Airflow** 521 Pa s/m. **Ignifugazione:** AS/NZS 3837 Class 2. ASTM E84 class A incollato. ASTM E84 Class B non incollato. BS 5852 Crib 5 trattato ignifugo. BS 5852 ignition source 3. BS 5852 Part 1. EN 1021-1/2. IMO FTP Code 2010:Part 8. NF D 60 013. SN 198 898 5.3 trattato ignifugo. UNI 9175 11M. US Cal. Bull. 117-2013. (Disponibile copia del test).

**Manutenzione** Per favore seguire simboli ISO. Per disinfettare, vedi il sito kvadrat.dk.

### ES

**Aplicación** Adecuado para el uso en oficinas, hoteles, instituciones y hogares. Gran resistencia al desgaste.

**Descripción** 97% lana virgen, peinada, 3% nilón. Anchura aprox. 140 cm. Peso aprox. 440 gr/ml. Teñido en material. Posibles variaciones de color.

#### Filo ↓

**Resistencia al desgaste:** Aprox. 60.000 ciclos según el método Martindale EN ISO 12947. **Resistencia a la luz** (ISO) 6. **Relleno** (EN ISO) 3-4. **Solidez al frotamiento** (ISO) seco 4-5, mojado 4-5. **Absorción acústica** (EN ISO 354) 0.55/Class D (estor), 0.80/Class B (cortina). **Airflow** 521 Pa s/m. **Resistencia al fuego:** AS/NZS 3837 Class 2. ASTM E84 class A adherido. ASTM E84 Class B sin pegar. BS 5852 Crib 5 con tratamiento. BS 5852 ignition source 3. BS 5852 Part 1. EN 1021-1/2. IMO FTP Code 2010:Part 8. NF D 60 013. SN 198 898 5.3 con tratamiento. UNI 9175 11M. US Cal. Bull. 117-2013. (Copia del informe de ensayos disponible). **Limpieza** Consulte los símbolos ISO. Desinfección, visita kvadrat.dk.

### JP

**用途** オフィス、ホテル、各種施設、住宅インテリア。耐耗性大。  
**詳細** 97% ニューウール。ウーステッド、3% ナイロン。幅:140cm。重量:1mあたり約440gr。布染め。明色の場合、異質繊維が混在する場合があります。色彩ニュアンスに多少の違いが生じる可能性あり。

#### 耳、ふち ↓

#### テスト

**磨耗:** マーチンデール法により摩擦運動約 60,000 回。EN ISO 12947. **色褪せ保証:** (ISO) 6. **ピリング** (EN ISO) 3-4. **摩擦保証:** (ISO) 乾燥状態 4-5、濡れた状態 4-5. **吸音率** (EN ISO 354) 0.55/Class D (パネル状)、0.80/Class B (ドレープ状)。 **airflow** 521 Pa s/m. **耐炎性:** AS/NZS 3837 Class 2. ASTM E84 class A 耐火性レベル1. ASTM E84 Class B unadhered. 特殊耐炎処理を行うことにより、BS 5852 Crib 5 に到達可能。BS 5852 ignition source 3. BS 5852 Part 1. EN 1021-1/2. IMO FTP Code 2010:Part 8. NF D 60 013. 特殊耐炎処理を行うことにより、SN 198 898 5.3 に到達可能。UNI 9175 11M. US Cal. Bull. 117-2013. (テストレポートコピー入手可能。)

#### 手入れ

ISO シンボル参照。消毒について?kvadrat.dkまで参照ください。

### CN

**适用范围** 办公室、宾馆酒店、公共设施、居家使用。耐耗性大。

**成分** 97%新羊毛，精纺，3%尼龙。幅宽约55英寸(140cm)。重量440克/延米。原材料染色面料。颜色可能稍有色差。

#### 织边方向 ↓

**马丁代尔法**约60,000转。EN ISO 12947. **光照色牢度** (ISO) 6. **起毛起球** (EN ISO) 3-4. **摩擦色牢度** (ISO) 干燥4-5, 湿4-5. **吸声系数** (EN ISO 354) 0.55/Class D (隔断帘), 0.80/Class B (一般窗帘使用)。**气流阻力** 521 Pa s/m. **阻燃性:** AS/NZS 3837 Class 2. ASTM E84 Class A 防火等级1. ASTM E84 Class B unadhered. 特别耐火处理时BS 5852 Crib 5 可以满足。BS 5852 ignition source 3. BS 5852 Part 1. EN 1021-1/2. IMO FTP Code 2010:Part 8. NF D 60 013. 特别耐火处理时SN 198 898 5.3 可以满足。UNI 9175 11M. US Cal. Bull. 117-2013. (可提供测试报告副本)。 **维护** 请参照ISO标志。消毒请参阅kvadrat.dk。



Quality and environmental system accreditation according to ISO 9001 and ISO 14001.

\* ACT® Registered Certification Marks

\* Abrasion test results exceeding ACT performance guidelines are not an indicator of product lifespan. Multiple factors affect fabric durability and appearance retention.

EU Ecolabel: Encouraging the use of sustainable fibres. Durable and high quality. Hazardous substances restricted.

Contact and further information [www.kvadrat.dk](http://www.kvadrat.dk)

10 year warranty



US contact info: 1-800-620-9309