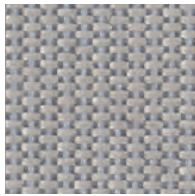
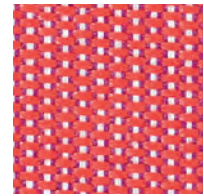


Patio

**kvadrat**



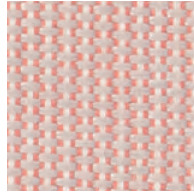
150



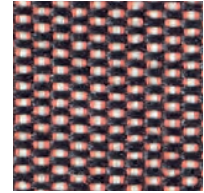
550



210



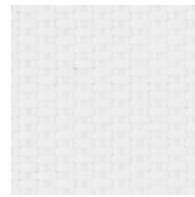
340



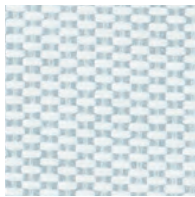
370



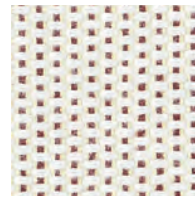
230



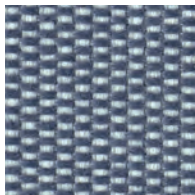
100



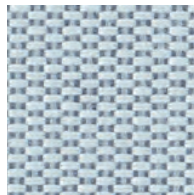
110



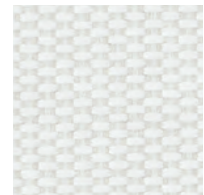
430



170

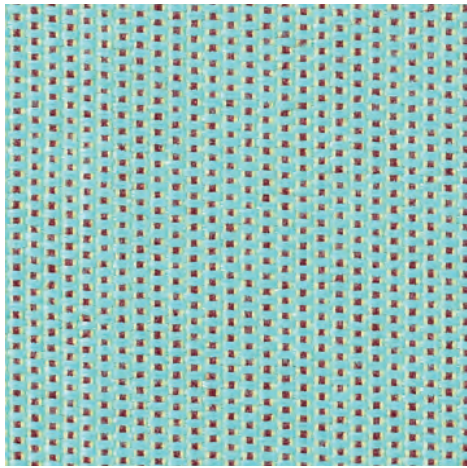


140

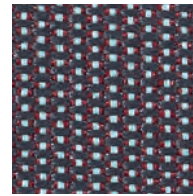


200

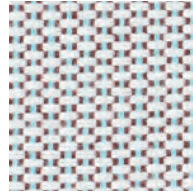
Patio



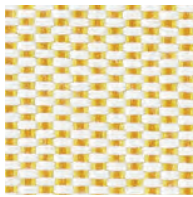
840



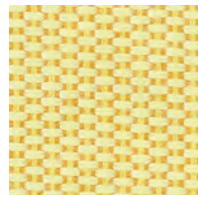
970



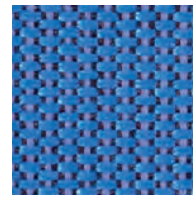
220



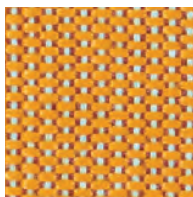
410



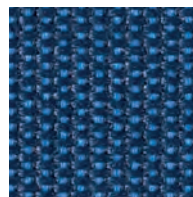
440



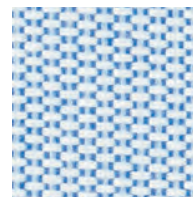
750



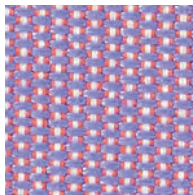
450



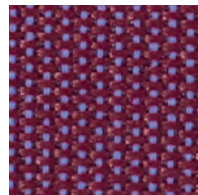
780



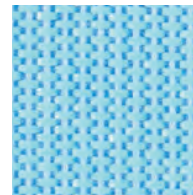
730



650



570



740

## Patio

Designed by Karina Nielsen Rios

### DK

**Anvendelse** Uden- og indendørs møbelstof til såvel privat og offentlig indretning. Resistens overfor skimmel, klor-, havvand og UV.

**Beskrivelse** 100% Trevira CS. Fluorcarbon-fri vandafvisende finish. Bredde ca. 140 cm. Vægt ca. 560 g/lbm. Garnfarvet. Nuanceforskkel kan forekomme.

#### Ægkant ↔

**Slidstyrke:** Ca. 50.000 slidbevægelser efter Martindale metoden EN ISO 12947. **Lysægthed** (ISO) 7. **Vejrægthed** (ISO) 6-7. **Pilling** (EN ISO) 3-4. **Gnidægthed** (ISO) tør 4-5, våd 4-5. **Spray test** (EN) 3. **Resistens overfor tilsudsning** min. 4 (BS). **Flammesikring:** BS 5852 ignition source 3. BS 5852 part 1 ignition source 0. DIN 4102 B1. EN 1021-1/2. IMO FTP Code 2010:Part 8. NF D 60 013. SN 198 898 5.2. UNI 9175 11M. US Cal. Bull. 117-2013. ÖNORM B1 / Q1. (Kopi af testrapport kan rekvireres).

**Vedligeholdelse** Se ISO symboler. Krypning ca. 1% ved vask 30°C.

### UK

**Application** Out- and indoor upholstery for both domestic and public decoration. Mildew, chlorine, seawater and UV resistant.

**Description** 100% Trevira CS.

Fluorocarbon-free water repellent finish. Width app. 55 inches (140 cm). Weight app. 560 g/lin.m. Yarn dyed. Colour differences may occur.

#### Selvedge ↔

**Abrasion:** App. 50,000 rubs acc. to the Martindale method EN ISO 12947.

**Lightfastness** (ISO) 7. **Fastness to weathering** (ISO) 6-7. **Pilling** (EN ISO) 3-4. **Fastness to rubbing** (ISO) dry 4-5, wet 4-5. **Spray test** (EN) 3. **Resistant to visible soiling** (BS) min. 4. **Flame resistance:** BS 5852 ignition source 3. BS 5852 part 1 ignition source 0. DIN 4102 B1. EN 1021-1/2. IMO FTP Code 2010:Part 8. NF D 60 013. SN 198 898 5.2. UNI 9175 11M. US Cal. Bull. 117-2013. ÖNORM B1 / Q1. (Copy of test report available).

**Care** Please see the ISO symbols. Shrinkage app. 1% when washed at 30°C.

### DE

**Anwendungsbereich** Möbelstoff wohlgeeignet im sowohl privaten als öffentlichen Wohnbereich. Resistent gegenüber Schimmel, Chlor-, Meerwasser und UV.

**Beschreibung** 100% Trevira CS. Fluorcarbon-frei wasserabweisend Ausrüstung. Breite ca. 140 cm. Gewicht ca. 560 g/lfd.m. Garngefärbt. Farbunterschiede können vorkommen.

#### Webkant ↔

**Scheuerfestigkeit:** Ca. 50.000 Scheuerhübe gemäss der Martindale Methode EN ISO 12947. **Lichtechtheit** (ISO) 7. **Wetterechtheit** (ISO) 6-7. **Pilling** (EN ISO) 3-4. **Reibechtheit** (ISO) trocken 4-5, nass 4-5. **Spraytest** (EN) 3. **Resistent gegenüber Verschmutzung** (BS) min. 4. **Flammschutz:** BS 5852 ignition source 3. BS 5852 part 1 ignition source 0. DIN 4102 B1. EN 1021-1/2. IMO FTP Code 2010:Part 8. NF D 60 013. SN 198 898 5.2. UNI 9175 11M. US Cal. Bull. 117-2013. ÖNORM B1 / Q1. (Kopie von Prüfungsbericht verfügbar).

**Pflege** Sehen Sie bitte die ISO Pflegesymbole. Wascheinlauf ca. 1% bei 30°C.

### NL

**Toepassing** Uitstekend toepasbaar zowel in particuliere woningen als voor projecten. Schimmel, chloor-, zeewater en UV resistent. **Omschrijving** 100% Trevira CS.

Fluorcarbon-vrije water afstotende behandeling. Breedte ca. 140 cm. Gewicht ca. 560 gr/str. m. Garengerfvd. Kleurverschillen kunnen optreden.

#### Zelfkant ↔

**Slijtvastheid:** Ca. 50.000 toeren Martindale EN ISO 12947. **Lichtechtheid** (ISO) 7. **Kleurechtheid bij weersomstandigheden** (ISO) 6-7. **Pilling** (EN ISO) 3-4. **Wrijftechtheid** (ISO) droge 4-5, natte 4-5. **Spray test** (EN) 3. **Weerstand tegen vervuiling** (BS) min. 4. **Brandvrijheid:** BS 5852 ignition source 3. BS 5852 part 1 ignition source 0. DIN 4102 B1. EN 1021-1/2. IMO FTP Code 2010:Part 8. NF D 60 013. SN 198 898 5.2. UNI 9175 11M. US Cal. Bull. 117-2013. ÖNORM B1 / Q1. (Op aanvraag sturen wij U graag een kopie van het testrapport toe).

**Onderhoud** Zie de ISO symbolen. Krimp ca. 1% bij 0°C.

### FR

**Domaine d'utilisation** Tissu d'ameublement pour aménagement privé et public. Résistant aux moisissures, au chlore, à l'eau de mer et UV.

**Description** 100% Trevira CS. Fini hydrofuge sans fluorocarbone. Largeur env. 140 cm. Poids env. 560 g/m lg. Teinture sur fil. Ecart des coloris possibles.

#### Lisière ↔

**Résistance à l'abrasion:** Env. 50.000 révolutions selon le procédé Martindale EN ISO 12947. **Résistance à la lumière** (ISO) 7. **Résistance aux intempéries** (ISO) 6-7. **Boulochage** (EN ISO) 3-4. **Résistance au frottement** (ISO) sec 4-5, mouillé 4-5. **Test de pulvérisation** (EN) 3. **Résistance à la salissure visible** (BS) min. 4. **Normes au feu:** BS 5852 ignition source 3. BS 5852 part 1 ignition source 0. DIN 4102 B1. EN 1021-1/2. IMO FTP Code 2010:Part 8. NF D 60 013. SN 198 898 5.2. UNI 9175 11M. US Cal. Bull. 117-2013. ÖNORM B1 / Q1. (La copie du compte rendu des tests est disponible sur demande).

**Entretien** Voir les symboles ISO.

Rétrécissement: Env. 1% pour lavage à 30°C.

### IT

**Destinazione d'uso** Rivestimenti per imbottiti, casa e contract. Resistente alla muffa, al cloro, all'acqua di mare e UV.

**Caratteristiche** 100% Trevira CS. Finitura idrorepellente senza fluorocarbon. Altezza circa 140 cm. Peso circa 560 gr/mtl. Tinto in filo. Possibili differenze per colore.

#### Cimosa ↔

**Resistenza all'abrasione:** circa 50.000 cicli/metodo Martindale EN ISO 12947. **Resistenza alla luce** (ISO) 7. **Resistenza alle intemperie** (ISO) 6-7. **Pilling** (EN ISO) 3-4. **Resistenza allo sfregamento** (ISO) condizione a secco 4-5, condizione umido 4-5. **Prova dello spruzzo** (EN) 3. **Resistenza della sporczia visibile** (BS) min. 4. **Ignifugazione:** BS 5852 ignition source 3. BS 5852 part 1 ignition source 0. DIN 4102 B1. EN 1021-1/2. IMO FTP Code 2010:Part 8. NF D 60 013. SN 198 898 5.2. UNI 9175 11M. US Cal. Bull. 117-2013. ÖNORM B1 / Q1. (Disponibile copia del test).

**Manutenzione** Per favore seguire simboli ISO. Restrigimento 1% quando lavata 30°C.

### ES

**Aplicación** Tapicería para decoración de uso doméstico y público. Resistente al moho, al cloro, al agua salina y UV.

**Descripción** 100% Trevira CS. Repelente al agua libre de fluorocarbonos. Anchura aprox. 140 cm. Peso aprox. 560 gr/ml. Teñido en hilado. Posibles variaciones de tintadas.

#### Filo ↔

**Resistencia al desgaste:** Aprox. 50.000 ciclos según el método Martindale EN ISO 12947. **Estabilidad del color a la luz** (ISO) 7. **Resistencia a la intemperie** (ISO) 6-7. **Relleno** (EN ISO) 3-4. **Solidez al frotamiento** (ISO) seco 4-5, mojado 4-5. **Spray test** (EN) 3. **Resistencia a la suciedad visible** (BS) min. 4. **Resistencia al fuego:** BS 5852 fuente de ignición 3. BS 5852 part 1 fuente de ignición 0. DIN 4102 B1. EN 1021-1/2. IMO FTP Code 2010:Part 8. NF D 60 013. SN 198 898 5.2. UNI 9175 11M. US Cal. Bull. 117-2013. ÖNORM B1 / Q1. (Copia del informe de ensayos disponible).

**Mantenimiento** Consulte los símbolos ISO. Encogimiento aprox. un 1% en lavado a 30°C.

### JP

**用途** 住宅及び公共施設向けの室内/室外用テキスタイル耐久性: カビ/塩素/海水/UV。

**詳細** 100% トレヴィーラ CS。無機性撥水加工済み。幅: 140 cm。重量: 1mあたり約 560 g。糸染め。色彩ニュアンスに多少の違いが生じる可能性あり。

#### 耳、ふち、↔

#### テスト:

**磨耗:** マーチンデール法により摩擦運動約 50,000 回。EN ISO 12947. **色褪せ保証:** (ISO) 7. **耐候性** (ISO) 6-7. **ピリング** (EN ISO) 3-4. **摩擦保証:** (ISO) 乾燥状態 4-5、濡れた状態 4-5. **スプレーテスト済み** (EN) 3. **防汚性** (BS) min. 4. **耐炎性:** BS 5852 ignition source 3. BS 5852 part 1 ignition source 0. DIN 4102 B1. EN 1021-1/2. IMO FTP Code 2010:Part 8. NF D 60 013. SN 198 898 5.2. UNI 9175 11M. US Cal. Bull. 117-2013. ÖNORM B1 / Q1. (テストレポートのコピー入手可能。)

#### 手入れ

ISOシンボル参照。30°C で洗浄した際の縮み約 1%。

### CN

**适用范围** 适用于住宅和公共空间的室内兼室外软装装饰材料具有防发霉、耐氯、耐海水、抗紫外线特性。

**成分** 100% Trevira CS。不含碳氟化合物的防泼水涂层。幅宽约 55 英寸 (140 cm)。重量约 560 克/延米。纱染色面料。颜色可能稍有色差。

#### 图纹方向 ↔

**马丁代尔法** 约 50,000 转。EN ISO 12947. **光照色牢度** (ISO) 7. **耐气候色牢度** (ISO) 6-7. **起毛起球** (EN ISO) 3-4. **摩擦色牢度** (ISO) 干燥 4-5、湿 4-5. **喷雾测试** (EN) 3. **抗可见污损** (BS) min. 4. **阻燃性:** BS 5852 ignition source 3. BS 5852 part 1 ignition source 0. DIN 4102 B1. EN 1021-1/2. IMO FTP Code 2010:Part 8. NF D 60 013. SN 198 898 5.2. UNI 9175 11M. US Cal. Bull. 117-2013. ONORM B1 / Q1. (可提供测试报告副本)。

**维护** 请参照 ISO 标志。于温度 30°C 清洗时，面料缩水率约 1%。



10 year warranty