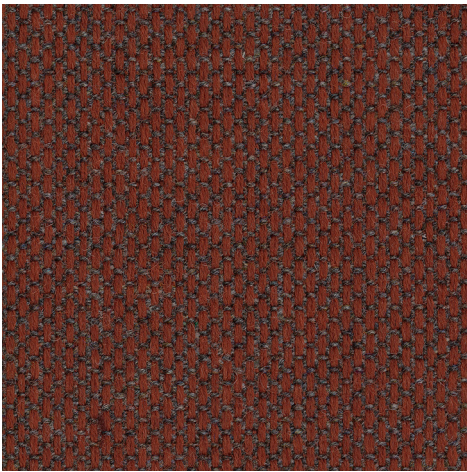
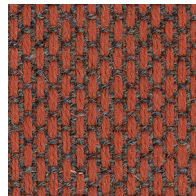




Re-wool 2



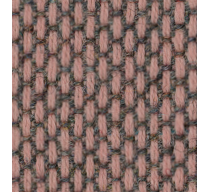
687



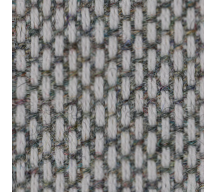
558



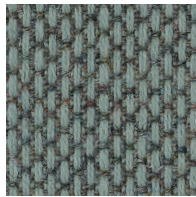
577



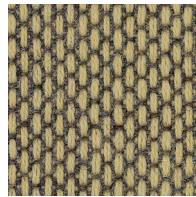
648



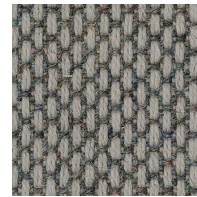
108



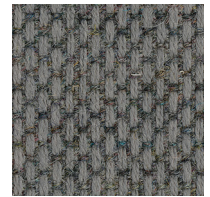
868



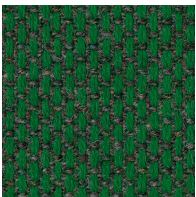
447



128



158



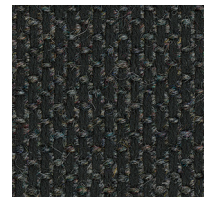
967



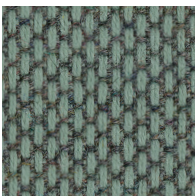
977



147



198



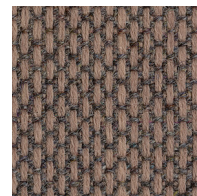
858



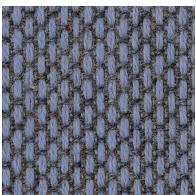
987



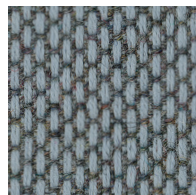
218



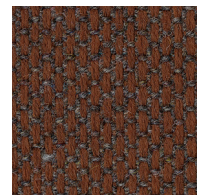
347



657



718



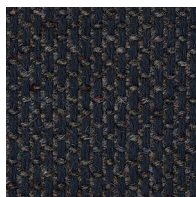
377



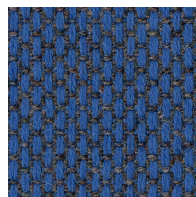
397



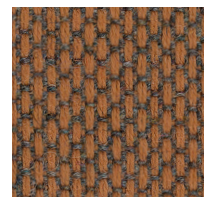
787



797



767



568

04/2024

**Re-wool 2**

Designed by Margrethe Odgaard

45% recycled wool, 45% new wool, 10% nylon

Direction: ↕

Width: approx. 140cm (55")

Abrasion: 100,000 Martindale

**Click here for full Technical Specifications.**

**10**<sup>year</sup>  
warranty

Quality and environmental system accreditation according to ISO 9001 and ISO 14001.

Contact and further information [www.kvadrat.dk](http://www.kvadrat.dk)

**US contact info: 1-800-620-9309**