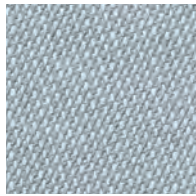
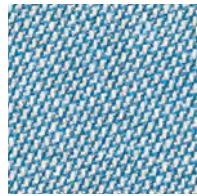


Rime

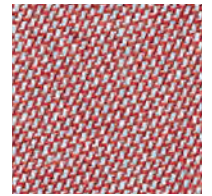
kvadrat



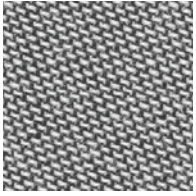
131



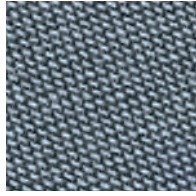
721



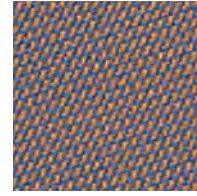
541



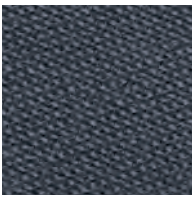
151



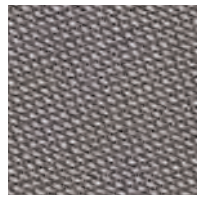
741



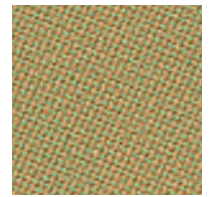
731



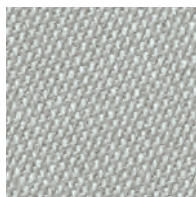
791



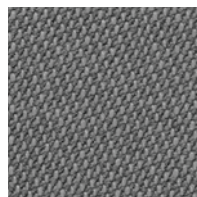
641



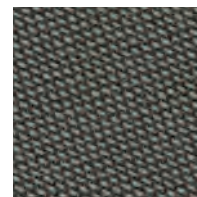
941



231



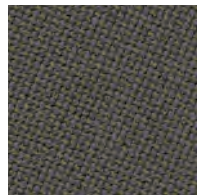
271



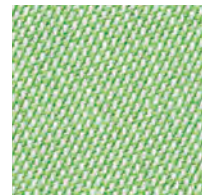
981



111

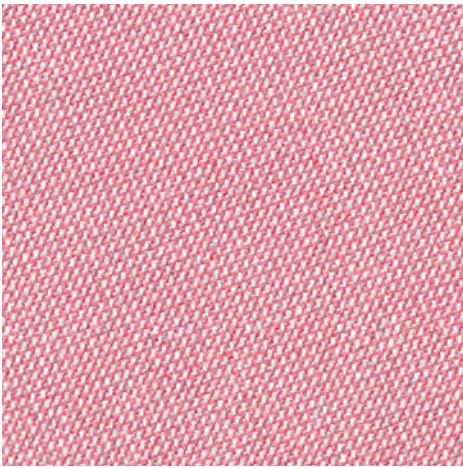


991



921

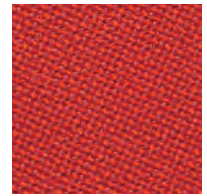
Rime



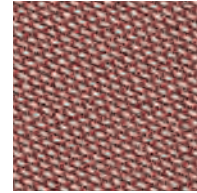
621



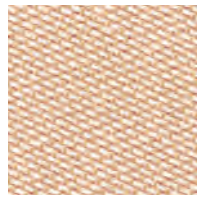
211



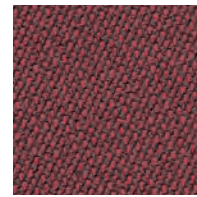
551



571



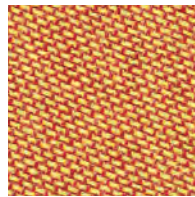
521



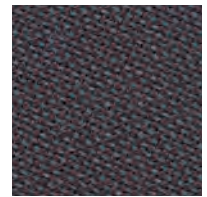
591



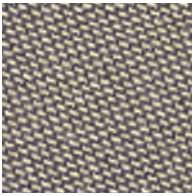
911



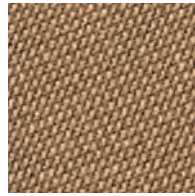
451



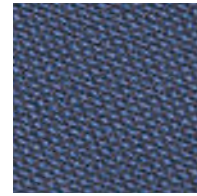
691



951



471



781

Rime

Designed by Åsa Pärson

DK

Anvendelse Kontorer, hoteller, institutioner, private indretninger. Stor slidstyrke.
Beskrivelse 90% ny uld, kamgarn, 10% nylon. Bredde ca. 140 cm. Vægt ca. 580 g/lbm. Garnfarvet. Nuanceforskel kan forekomme.
Ægkant ⇄
Slidstyrke: Ca. 100.000 slidbevægelser efter Martindale metoden EN ISO 12947. **Lysægthed** (ISO) 5-7. **Pilling** (EN ISO) 4. **Gnidægthed** (ISO) tør 4-5, våd 4-5. **Lydsorption** (EN ISO 354) 0.60/Class C (fladt), 0.85/Class B (foldet). **Airflow** 622 Pa s/m. **Flammesikring:** AS/NZS 3837 Class 2. BS 5852 Crib 5 med flammesikring. BS 5852 part 1. EN 1021-1/2. IMO FTP Code 2010:Part 8. NF D 60 013. SN 198 898 5.3 med flammesikring. UNI 9175 11M. US Cal. Bull. 117-2013. ÖNORM B2 / Q1. (Kopi af testrapport kan rekvireres).
Vedligeholdelse Se ISO symboler. Desinfektion, se kvadrat.dk.

UK/US

Application Offices, hotels, institutions, domestic use. Great durability.
Description 90% new wool, worsted, 10% nylon. Width app. 55 inches (140 cm). Weight app. 580 g/lin.m, 18.6 oz/ly. Yarn dyed. Colour differences may occur.
Selvedge/Direction ⇄
Abrasion: App. 100,000 rubs acc. to the Martindale method EN ISO 12947*. **Lightfastness** (ISO) 5-7. **Pilling** (EN ISO) 4. **Fastness to rubbing** (ISO) dry 4-5, wet 4-5. **Sound absorption** (EN ISO 354) 0.60/Class C (flat), 0.85/Class B (waved). **Airflow** 622 Pa s/m. **Flame resistance:** AS/NZS 3837 Class 2. BS 5852 Crib 5 with treatment. BS 5852 part 1. EN 1021-1/2. IMO FTP Code 2010:Part 8. NF D 60 013. SN 198 898 5.3 with treatment. UNI 9175 11M. US Cal. Bull. 117-2013. ÖNORM B2 / Q1. (Copy of test report available).
Care Please see the ISO symbols. Disinfection, see kvadrat.dk.

DE

Anwendungsbereich Büros, Hotels, Objektbereich, privater Wohnbereich. Hohe Strapazierfähigkeit.
Beschreibung 90% Schurwolle, Kammgarn, 10% Nylon. Breite ca. 140 cm. Gewicht ca. 580 g/m. Garngefärbt. Farbunterschiede können vorkommen.
Webkante ⇄
Scheuerfestigkeit: Ca. 100.000 Scheuerhübe nach der Martindale Methode EN ISO 12947. **Lichtechtheit** (ISO) 5-7. **Pilling** (EN ISO) 4. **Reibechtheit** (ISO) trocken 4-5, nass 4-5. **Schallabsorption** (EN ISO 354) 0.60/Class C (glatt), 0.85/Class B (gefaltet). **Airflow** 622 Pa s/m. **Flammschutz:** AS/NZS 3837 Class 2. BS 5852 Crib 5 mit Ausrüstung. BS 5852 part 1. EN 1021-1/2. IMO FTP Code 2010:Part 8. NF D 60 013. SN 198 898 5.3 mit Ausrüstung. UNI 9175 11M. US Cal. Bull. 117-2013. ÖNORM B2 / Q1. (Testbericht verfügbar).
Pflege Siehe ISO Pflegesymbole. Desinfektion, siehe kvadrat.dk.

NL

Toepassing Kantoren, hotels, instellingen, de privéfeer. Uitstekende slijtvastheid.
Omschrijving 90% scheerwol, kamgarn, 10% nylon. Breedte ca. 140 cm. Gewicht ca. 580 gr/str. m. Garegeverfd. Kleurverschillen kunnen optreden.
Zelfkant ⇄
Slijtvastheid: Ca. 100.000 toeren Martindale EN ISO 12947. **Lichtechtheid** (ISO) 5-7. **Pilling** (EN ISO) 4. **Wrijftechtheid** (ISO) droge 4-5, natte 4-5. **Geluidsabsorptie** (EN ISO 354) 0.60/Class C (vlak), 0.85/Class B (geplooid). **Airflow** 622 Pa s/m. **Brandwerendheid:** AS/NZS 3837 Class 2. BS 5852 Crib 5 met behandeling. BS 5852 part 1. EN 1021-1/2. IMO FTP Code 2010:Part 8. NF D 60 013. SN 198 898 5.3 met behandeling. UNI 9175 11M. US Cal. Bull. 117-2013. ÖNORM B2 / Q1. (Op aanvraag sturen wij u graag een kopie van het testrapport toe).
Onderhoud Zie de ISO symbolen. Desinfectie, kvadrat.dk.

FR

Domaine d'utilisation Tissu d'ameublement pour aménagement privé et public. Grande résistance.
Description 90% laine vierge, peigné, 10% nylon. Largeur env. 140 cm. Poids env. 580 g/m lg. Teinture sur fil. Ecartis des coloris possibles.
Lisière ⇄
Résistance à l'abrasion: Env. 100.000 révolutions selon le procédé Martindale EN ISO 12947. **Résistance à la lumière** (ISO) 5-7. **Boulochage** (EN ISO) 4. **Résistance au frottement** (ISO) sec 4-5, mouillé 4-5. **Absorption acoustique** (EN ISO 354) 0.60/Class C (à plat), 0.85/Class B (plié). **Airflow** 622 Pa s/m. **Normes au feu:** AS/NZS 3837 Class 2. BS 5852 Crib 5 avec traitement. BS 5852 part 1. EN 1021-1/2. IMO FTP Code 2010:Part 8. NF D 60 013. SN 198 898 5.3 avec traitement. UNI 9175 11M. US Cal. Bull. 117-2013. ÖNORM B2 / Q1. (La copie du compte rendu des tests est disponible sur demande).
Entretien Voir les symboles ISO. Désinfection, voir kvadrat.dk.

IT

Destinazione d'uso Rivestimento per imbottiti casa e contract. Alta resistenza all'abrasione.
Caratteristiche 90% lana vergine, pettinata, 10% nylon. Altezza circa 140 cm. Peso circa 580 gr/mtl. Tinto in filo. Possibili differenze per colore.
Cimosa ⇄
Abrasion: Circa 100.000 cicli/metodo Martindale EN ISO 12947. **Resistenza alla luce** (ISO) 5-7. **Pilling** (EN ISO) 4. **Resistenza allo sfregamento** (ISO) condizione a secco 4-5, condizione umido 4-5. **Assorbimento acustico** (EN ISO 354) 0.60/Class C (a pannello (tesa)), 0.85/Class B (arricciata). **Airflow** 622 Pa s/m. **Ignifugazione:** AS/NZS 3837 Class 2. BS 5852 Crib 5 se trattato ignifugo. BS 5852 part 1. EN 1021-1/2. IMO FTP Code 2010:Part 8. NF D 60 013. SN 198 898 5.3 se trattato ignifugo. UNI 9175 11M. US Cal. Bull. 117-2013. ÖNORM B2 / Q1. (Disponibile copia del test).
Manutenzione Per favore seguire simboli ISO. Per disinfettare, vedi il sito kvadrat.dk.

ES

Aplicación Oficinas, hoteles, instituciones, uso doméstico. Gran resistencia al desgaste.
Descripción 90% lana virgen, peinada, 10% nilón. Anchura aprox. 140 cm. Peso aprox. 580 gr/ml. Teñido en hilo. Posibles variaciones de color.
Filo ⇄
Resistencia al desgaste: Aprox. 100.000 ciclos según el método Martindale EN ISO 12947. **Resistencia a la luz** (ISO) 5-7. **Relleno** (EN ISO) 4. **Solidez al frotamiento** (ISO) seco 4-5, mojado 4-5. **Absorción acústica** (EN ISO 354) 0.60/Class C (estor), 0.85/Class B (cortina). **Airflow** 622 Pa s/m. **Resistencia al fuego:** AS/NZS 3837 Class 2. BS 5852 Crib 5 con tratamiento. BS 5852 part 1. EN 1021-1/2. IMO FTP Code 2010:Part 8. NF D 60 013. SN 198 898 5.3 con tratamiento. UNI 9175 11M. US Cal. Bull. 117-2013. ÖNORM B2 / Q1. (Copia del informe de ensayos disponible).
Mantenimiento Consulte los símbolos ISO. Desinfección, visita kvadrat.dk.

JP

用途 オフィス、ホテル、各種施設、住宅インテリア。耐消耗性大。
詳細 ニューウール、ウーステッド90%、ナイロン10%。幅:140cm。重量:1mあたり約580g。先染め。色に多少の違いが生じる場合があります。
セルビッチ ⇄
テスト:
 磨耗:マーチンデール法により摩擦運動約100,000回。EN ISO 12947. **耐光性:**(ISO) 5-7. **ピリング**(EN ISO) 4. **摩擦保証:**(ISO) 乾燥状態4-5、濡れた状態4-5. **吸音率**(EN ISO 354) 0.60/Class C (パネル状)、0.85/Class B (ドレープ状)。**気流:** 622 Pa s/m. **防炎性:** AS/NZS 3837 Class 2. 特殊耐炎処理を行うことにより、BS 5852 Crib 5 に到達可能。BS 5852 part 1. EN 1021-1/2. IMO FTP Code 2010:Part 8. NF D 60 013. 特殊耐炎処理を行うことにより、SN 198 898 5.3 に到達可能。UNI 9175 11M. US Cal. Bull. 117-2013. ÖNORM B2 / Q1. (認定書類のご用意あり。)
お手入れ
 ISO シンボル参照。消毒について?kvadrat.dkまで参照ください。

CN

适用范围 办公室、宾馆酒店、公共设施、居家使用。耐消耗性大。
成分 90%新羊毛(精纺)、10%尼龙。幅宽约55英寸(140cm)。重量约580克/延米。纱染色面料。颜色可能稍有色差。
图纹方向 ⇄
马丁代尔法约100,000转。EN ISO 12947. **光照色牢度**(ISO) 5-7. **起毛起球**(EN ISO) 4. **摩擦色牢度**(ISO) 干燥4-5、湿4-5. **吸声系数**(EN ISO 354) 0.60/Class C (隔断帘)、0.85/Class B (一般窗帘使用)。**气流阻力** 622 Pa s/m. **阻燃性:** AS/NZS 3837 Class 2. 特别耐火处理时BS 5852 Crib 5 可以满足。BS 5852 part 1. EN 1021-1/2. IMO FTP Code 2010:Part 8. NF D 60 013. 特别耐火处理时SN 198 898 5.3 可以满足。UNI 9175, 11M, US Cal. Bull. 117-2013. ÖNORM B2 / Q1. (可提供测试报告副本).
维护 请参照ISO标志。消毒请参阅kvadrat.dk.



Quality and environmental system accreditation according to ISO 9001 and ISO 14001.

* ACT® Registered Certification Marks

* Abrasion test results exceeding ACT performance guidelines are not an indicator of product lifespan. Multiple factors affect fabric durability and appearance retention.

EU Ecolabel: Encouraging the use of sustainable fibres. Durable and high quality. Hazardous substances restricted.

Contact and further information kvadrat.dk

10 year warranty



US contact info: 1-800-620-9309