

Russell Louise Sigvardt

Openness factor 0%
Blackout



kvadrat shade

Specification details

| | |
|-----------------|---|
| Openness factor | 0 % |
| Composition | 100% polyester with acrylic based black out coating |
| Fabric width | 300 cm (118 inches) |
| Weight | 420 g/m ² |
| Thickness | 0.50 mm |
| Fire tests | BS 5867 part 2 type B, DIN 4102 B1, EN 13773 class 1, IMO FTP code 2010: part 7, NF P 92 507 M2, NFPA 701 |
| Light fastness | 6-7 (ISO 1-8) |
| Environment | GREENGUARD Gold Certified, PVC-free, comply with REACH, Environmental Product Declaration (EPD) and Health Product Declaration (HPD) can be provided. |

These are approximate values. Individual results may vary slightly.
The technical data are based on average data and are subject to production tolerances.



Technical details

| Colour | Optical properties acc. to EN14500: 2008 | | | | | Based on ref. glazing D acc. to EN14501: 2005 | | |
|--------|--|--------|--------|--------|--------|---|---------------|------------------------------|
| | Number | Tv (%) | Rs (%) | Ts (%) | As (%) | Glare control rating | gtot/SHGC (%) | U-value (W/m ² K) |
| 100 | 0 | 73 | 0 | 27 | 4 | 17 | 0,94 | 0 |
| 120 | 0 | 73 | 0 | 27 | 4 | 17 | 0,94 | 0 |
| 130 | 0 | 73 | 0 | 27 | 4 | 17 | 0,94 | 0 |
| 200 | 0 | 73 | 0 | 27 | 4 | 17 | 0,94 | 0 |
| 220 | 0 | 73 | 0 | 27 | 4 | 17 | 0,94 | 0 |
| 230 | 0 | 73 | 0 | 27 | 4 | 17 | 0,94 | 0 |

Tv: Visual light transmission

Rs: Solar reflection

Ts: Solar transmission

As: Solar absorption

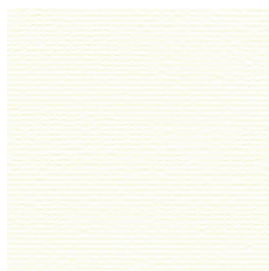
gtot/SHGC: Solar heat gain through total fenestration

Glazing D: Solar control double glazing (g=0.32 / U=1.1)

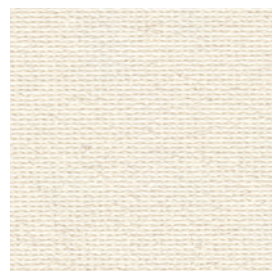
Russell



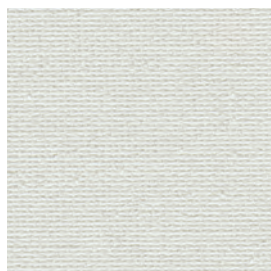
130



100



200



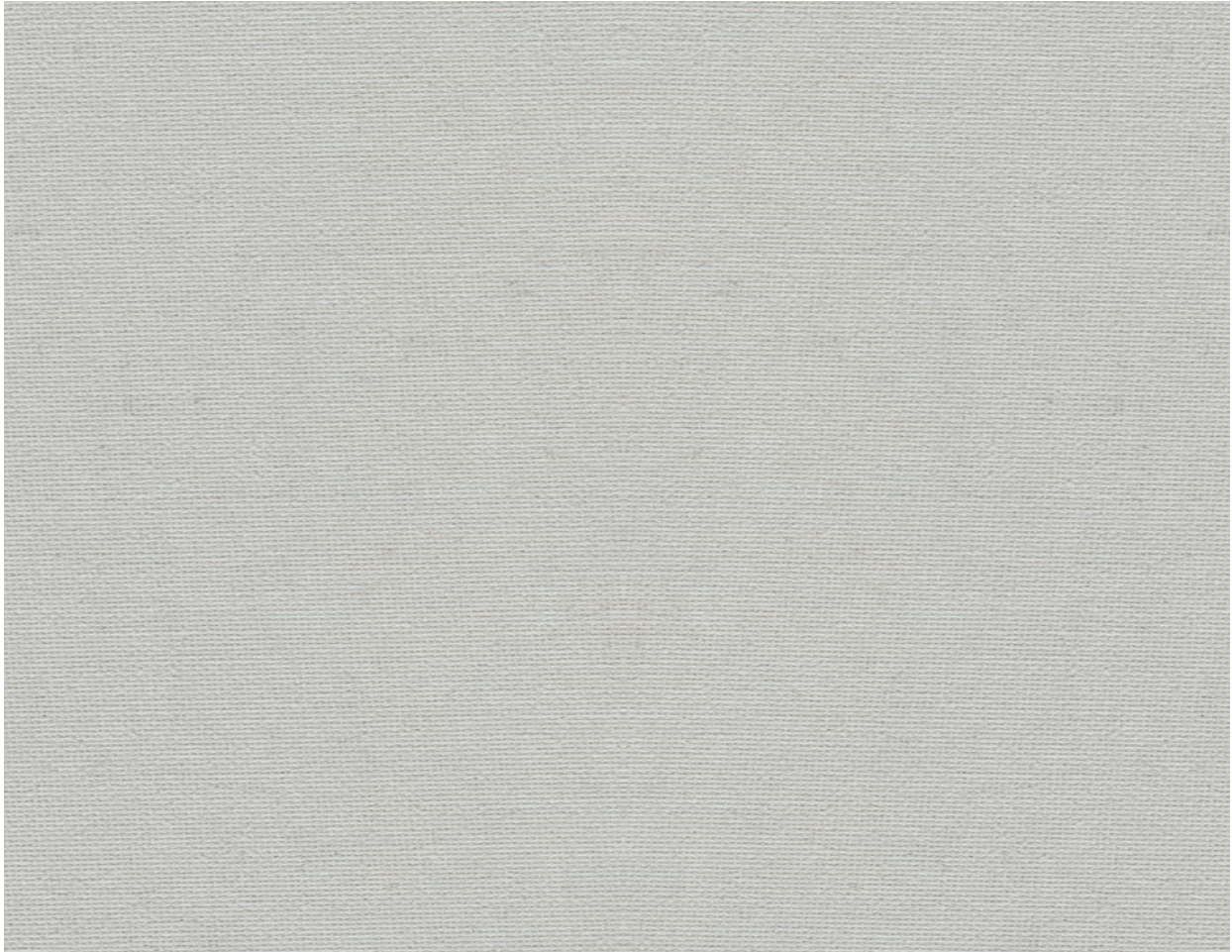
120



230



220



Russell

Designed by Louise Sigvardt

DK

Anvendelse Rullegardin.

Beskrivelse 100% polyester. Acryl FR belægning. Bredde 300 cm. Vægt 420 g/m². Tykkelse 0.50 mm. Trykt. Nuanceforskel kan forekomme.

Lysægted (ISO) 6-7. **Flammesikring:** BS 5867 part 2 type B. DIN 4102 B1. EN 13 773 class 1. IMO FTP Code 2010 Part 7. NF P 92 507 M2. NFPA 701. (Kopi af testrapport kan rekvireres).

Vedligeholdelse Se ISO symboler. Rengør med en tør eller opvredet klud. Brug kun rent vand. Kan også børstes eller støvsuges (nedsat sug) med børste mundstykke. Ved kraftigere tilsmudsning anbefales det at kontakte professionel renseri.

UK

Application Roller blind.

Description 100% polyester. Acrylic FR coating. Width 300 cm (118 inches). Weight 420 g/m². Thickness 0.50 mm. Printed. Colour differences may occur.

Lightfastness (ISO) 6-7. **Flame resistance:** BS 5867 part 2 type B. DIN 4102 B1. EN 13 773 class 1. IMO FTP Code 2010 Part 7. NF P 92 507 M2. NFPA 701. (Copy of test report available).

Care Please see the ISO symbols. Clean with a dry or moist wrung cloth. Only use clean water. Can also be brushed or carefully vacuumed (reduce suction power) with a brush nozzle. In case of considerable staining, we recommend contacting a professional dry cleaner.

DE

Anwendungsbereich Rollos.

Beschreibung 100% Polyester. Acryl FR Beschichtung. Breite 300 cm. Gewicht 420 g/m². Dicke 0.50 mm. Bedruckt. Farbunterschiede können vorkommen.

Lichtechtheit (ISO) 6-7. **Flammschutz:** BS 5867 part 2 type B. DIN 4102 B1. EN 13 773 class 1. IMO FTP Code 2010 Part 7. NF P 92 507 M2. NFPA 701. (Testbericht verfügbar).

Pflege Siehe ISO Pflegesymbole. Mit einem trockenen oder feuchten, ausgedrückten Tuch reinigen. Nur sauberes Wasser verwenden. Reinigung durch vorsichtiges Abbürsten oder saugen mit Bürstenaufsatz und reduzierter Leistung möglich. Bei starker Verschmutzung empfehlen wir einen professionellen Reinigungsdienst.

NL

Toepassing Rolgordijn.

Omschrijving 100% polyester. Acrylic FR coating. Breedte 300 cm. Gewicht 420 g/m². Dikte 0.50 mm. Print. Kleurverschillen kunnen optreden.

Lichtechtheid (ISO) 6-7. **Brandwerendheid:** BS 5867 part 2 type B. DIN 4102 B1. EN 13 773 class 1. IMO FTP Code 2010 Part 7. NF P 92 507 M2. NFPA 701. (Op aanvraag sturen wij u graag een kopie van het testrapport toe).

Onderhoud Zie de ISO symbolen. Schoon deppen met een droge of goed uitgewrongen, vochtige doek. Alleen schoon water gebruiken. Kan ook schoongemaakt worden door middel van een borstel of een stofzuiger met borstelstuk op halve kracht. In het geval van serieuze vlekvorming, raden we aan contact op te nemen met een professionele reiniger.

FR

Domaine d'utilisation Store.

Description 100% polyester. Revêtement acrylique FR. Largeur 300 cm. Poids 420 g/m². Épaisseur 0.50 mm. Avec impression. Ecart des coloris possibles.

Résistance à la lumière (ISO) 6-7. **Normes au feu:** BS 5867 part 2 type B. DIN 4102 B1. EN 13 773 class 1. IMO FTP Code 2010 Part 7. NF P 92 507 M2. NFPA 701. (La copie du compte rendu des tests est disponible sur demande).

Entretien Voir les symboles ISO. Nettoyez avec un chiffon sec ou chiffon humide bien essoré. Utilisez uniquement de l'eau propre. Le tissu peut aussi être brosse ou aspire avec soin (puissance d'aspiration réduite) avec un embout en forme de brosse. Dans le cas où le tissu a été fortement taché, nous suggérons de contacter un pressing professionnel.

IT

Destinazione d'uso Tende a rullo.

Caratteristiche 100% poliestere. Acrilica FR coating. Altezza 300 cm. Peso 420 g/m². Spessore 0.50 mm. Stampato. Possibili differenze per colore.

Resistenza alla luce (ISO) 6-7. **Ignifugazione:** BS 5867 part 2 type B. DIN 4102 B1. EN 13 773 class 1. IMO FTP Code 2010 Part 7. NF P 92 507 M2. NFPA 701. (Disponibile copia del test).

Manutenzione Per favore seguire simboli ISO. Pulire con un panno asciutto o umido strizzato. Utilizzare solo acqua pulita. Può anche essere spazzolato oppure accuratamente aspirato (ridurre la potenza di aspirazione) con un ugello a spazzola. In caso di macchie considerevoli, si consiglia di contattare un lavasecco professionale.

ES

Aplicación Estor.

Descripción 100% poliéster. Recubrimiento acrílico FR. Anchura 300 cm. Peso 420 g/m². Grosor 0.50 mm. Serigrafiada. Posibles variaciones de color.

Resistencia a la luz (ISO) 6-7. **Resistencia al fuego:** BS 5867 part 2 type B. DIN 4102 B1. EN 13 773 class 1. IMO FTP Code 2010 Part 7. NF P 92 507 M2. NFPA 701. (Copia del informe de ensayos disponible).

Limpieza Consulte los símbolos ISO. Limpiar con un paño seco o ligeramente humedecido. Utilizar únicamente agua. También se puede cepillar o aspirar con cuidado (baja intensidad de succión) con una boquilla de cepillo. En caso de manchas considerables, recomendamos contactar con un profesional de limpieza.

SE

Användning Rullgardin.

Beskrivning 100% polyester. Flamsäker akrylbeläggning. Bredd 300 cm. Vikt 420 g/m². Tjocklek 0.50 mm. Tryckt. Viss nyansskillnad kan förekomma.

Ljushärdighet (ISO) 6-7. **Flammskydd** BS 5867 part 2 type B. DIN 4102 B1. EN 13 773 class 1. IMO FTP Code 2010 Part 7. NF P 92 507 M2. NFPA 701. (Kopia av testrapport finns tillgänglig vid förfrågan).

Underhåll Se ISO symboler. Rengör med en torr eller fuktad trasa. Använd endast rent vatten. Kan även borstas eller försiktigt dammsugas med ett borstmunstycke. I händelse av fläckar rekommenderar vi att du lämnar in rullgardinen till kemtvätt.



5 year warranty

Louise Sigvardt

Louise Sigvardt is a graduate of the acclaimed Kolding Design School in Denmark where she studied fashion design. Sigvardt's design process begins with a story, a feeling, place, or a graphic expression. She then evolves and translates these into patterns and colours and, finally, a finished design.

Russell

Russell by Louise Sigvardt has an elegant, fine woven look. Constructed with a special white backing, it can deliver total darkness even if the daylight outside is powerful. Reflecting this, it meets the highest classification, the 100,000-lux test, and is ideal for rooms where blackout performance is desired. Simple collection including elegant, warm and cold neutrals.