

## Investigation report

**SAHCO GmbH**  
Fr. Sarah Kemmerer  
Kreuzburger Str 17-19  
  
90471 Nürnberg

DELCOTEX  
Delius Techtex GmbH & Co. KG  
Vilsendorfer Str. 50  
33739 Bielefeld  
Germany

Homepage: [www.textillabor.eu](http://www.textillabor.eu)

Contact: Erik Radl  
Division: Laboratory  
Phone: +49 (0) 52 06 / 91 07 - 52  
Fax: +49 (0) 52 06 / 91 07 - 34

Date: 28.02.2019

### Investigation report No. 19/256

order description: Colour fastness to artificial light: Xenon arc fading lamp  
DIN EN ISO 105-B02 (2014-11) in accordance  
to DIN EN 14465 (2006-09) Specification Upholstery fabric  
Colour fastness to rubbing DIN EN ISO 105-X12 (2016-11) in accordance  
to DIN EN 14465 (2006-09) Specification Upholstery fabric  
Seam slippage resistance DIN EN ISO 13936-2 (2004-07) in accordance  
to DIN EN 14465 (2006-09) Specification Upholstery fabric

sample: 600660 Velvet loose 001 till 005  
sampling: by orderer  
orderer: see address  
date of order: 21.01.2019  
date of delivery: 17.01.2019  
date of testing: 26.02.2019  
number of pages: 5

#### Remark:

The results are valid only for the tested object. The accreditation applies for the methods listed in the annex to the certificate D-PL-17323-01-00. Accredited test methods are underlined. The valuations and Interpretations in the investigation report are not subject to accreditation. Tests conducted through co-operation partners are marked with °. The content of this investigation report will not be passed to third persons without written approval of the orderer. The partial publication of the test report, as well as the usage for commercial process, is only allowed with a permission of the DELCOTEX Delius Techtex GmbH & Co. KG. Remnants of test material will be destroyed after 3 months. Previously stated specifications / data sheets / certificates are only characters and no warranties. Also no warranty in case of durability will be overtaken. Finally our general delivery and payment conditions are valid (please see [www.textillabor.eu](http://www.textillabor.eu)).



## Investigation report No. 19/256

page 2 of 5

### Instructions for performing

- 1. Method:** Colour fastness to artificial light: Xenon arc fading lamp  
DIN EN ISO 105-B02 (2014-11) in accordance  
to DIN EN 14465 (2006-09) Specification Upholstery fabric
- 2. Measuring conditions:**

Tester: Atlas Xenotest alpha LM  
Light: Xenon arc beam  
Filtering system: Typ 7  
Pick and placement cycling: 240h – until Mark 6

### Test results

Sample / Colour	Mark*	Category
600660 Velvet loose 001	5-6	B
600660 Velvet loose 002	5	B
600660 Velvet loose 003	5-6	B
600660 Velvet loose 004	5-6	B
600660 Velvet loose 005	5-6	B

\* The results based on using the blue scale.  
Note 1 = intense colour change  
Note 8 = no colour change

**Remark:** According to DIN EN 14465 (2006-09), the article is classified in the above-mentioned category with regard to light fastness in furniture fabrics.

# Investigation report No. 19/256

## Instructions for performing

**3. Method:** Colour fastness to rubbing DIN EN ISO 105-X12 (2016-11) in accordance to DIN EN 14465 (2006-09) Specification Upholstery fabric

### 4. Measuring conditions

tester:	Crockmeter
pin:	Ø (16+/-0,1) mm (cylinder)
abrasive:	cotton fabric
strength:	9 +/- 0,2 N
room temperature:	20 +/- 2 °C
humidity:	65 +/- 4 %
conditioned:	>4 h
water absorption:	warp 98,91-100%, weft: 99,09-99,82%

## Test results

**Article: 600660 Velvet loose 001**

	<b>Warp</b>	<b>Weft</b>	<b>Category</b>
<b>Dry-Mark *</b>	4-5	4-5	A
<b>Wet-Mark *</b>	4	4	A

**Article: 600660 Velvet loose 002**

	<b>Warp</b>	<b>Weft</b>	<b>Category</b>
<b>Dry-Mark *</b>	4-5	4-5	A
<b>Wet-Mark *</b>	4	4-5	A

**Article: 600660 Velvet loose 003**

	<b>Warp</b>	<b>Weft</b>	<b>Category</b>
<b>Dry-Mark *</b>	4-5	4-5	A
<b>Wet-Mark *</b>	4-5	4-5	A

# Investigation report No. 19/256

## Test results

**Article: 600660 Velvet loose 04**

	<b>Warp</b>	<b>Weft</b>	<b>Category</b>
<b>Dry-Mark *</b>	<b>4-5</b>	<b>4-5</b>	<b>A</b>
<b>Wet-Mark *</b>	<b>4-5</b>	<b>4-5</b>	<b>A</b>

**Article: 600660 Velvet loose 005**

	<b>Warp</b>	<b>Weft</b>	<b>Category</b>
<b>Dry-Mark *</b>	<b>4-5</b>	<b>4-5</b>	<b>A</b>
<b>Wet-Mark *</b>	<b>4</b>	<b>4-5</b>	<b>A</b>

\* The results based on using the grey scale – ISO 105-A03.

Note 1 = intense colour change

Note 5 = no colour change

**Remark:** According to DIN EN 14465 (2006-09), the article is classified in the above-mentioned category with regard to fastness to rubbing in furniture fabrics.

## Investigation report No. 19/256

page 5 of 5

### Instructions for performing

**5. Method:** Seam slippage resistance DIN EN ISO 13936-2 (2004-07) in accordance to DIN EN 14465 (2006-09) Specification Upholstery fabric

**6. Measuring conditions**

Type: furnishing fabric  
Tensile force: 180 N

### Test results

**Article:** 600660 Velvet loose 003

	<b>Seam opening [mm]</b>
Warp direction (seamline weft direction)	<b>2,2</b> (2,0-3,0)
Weft direction (seamline warp direction)	<b>1,0</b> (1,0-1,0)

**Remark:** According to DIN EN 14465 (2006-09) the article, in reference to seam slippage resistance in furnishing fabrics, the article is ranked within **category A**.



i. A. Erik Radl

Laboratory

DELCOTEX Delius Tectex GmbH & Co. KG

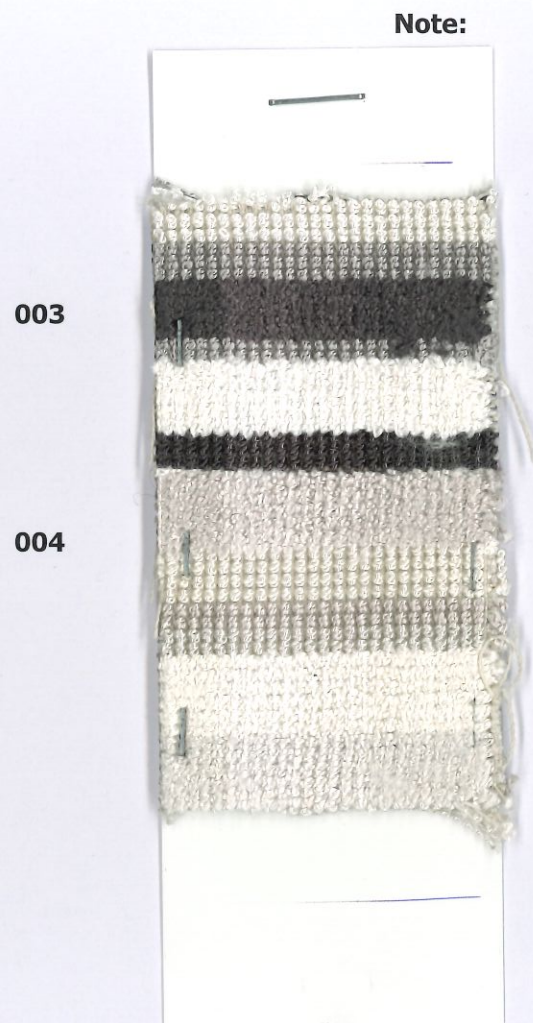
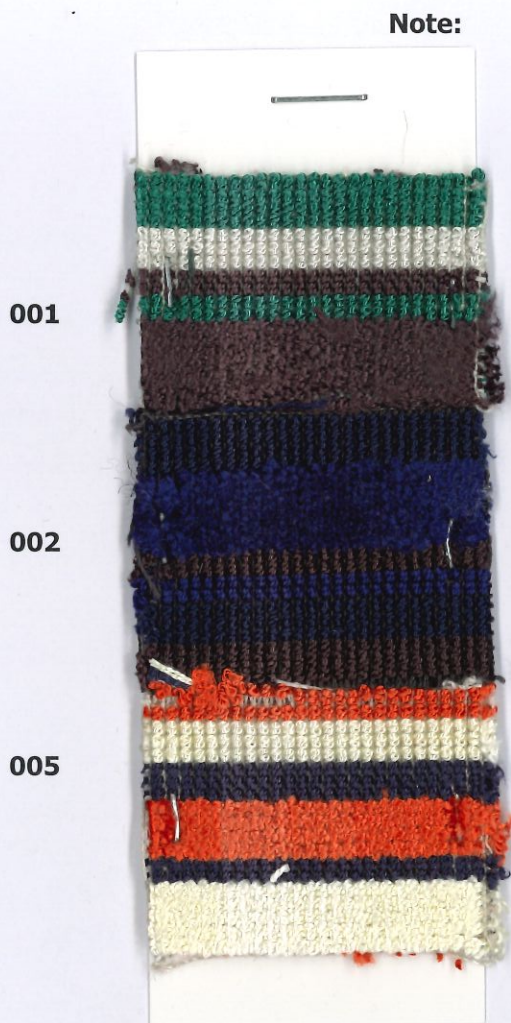
Only the information contained in the signed test report is binding.

## Investigation report No. 19/256

### Appendix

**Article:** 600660 Velvet loose

**Method:** Colour fastness to artificial light: Xenon arc fading lamp  
DIN EN ISO 105-B02 (2014-11) method 2



\*The end mark refers to the change of colour using the blue scale.  
Note 1 = very low colour fastness / strong change in colour  
Note 8 = very high colour fastness / no change in colour

Investigation report No. 19/256

Attachment

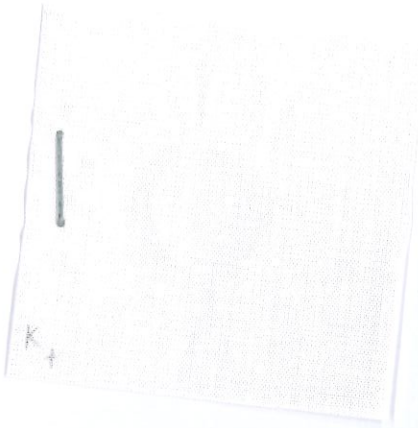
article:

Art. Velvet 600660, 82% Viscose, 18% Polyester, Farbe: loose 001

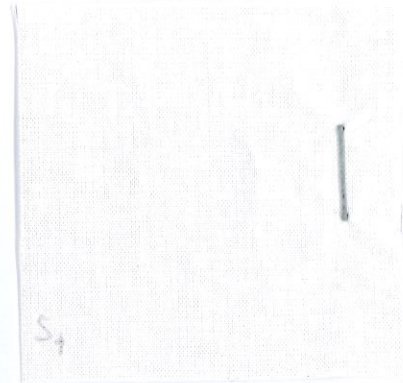
method:

Textiles - Tests for colour fastness - Part X12: Colour fastness to rubbing DIN EN ISO 105-X12:2016-11

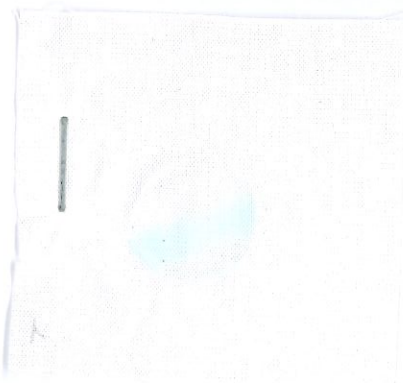
warp  
dry 4-5



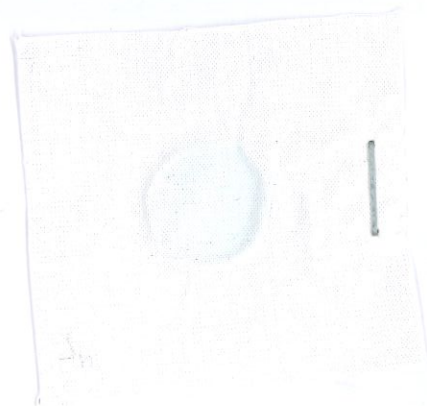
weft  
dry 4-5



warp  
wet 4



weft  
wet 4



Investigation report No. 19/256

Attachment

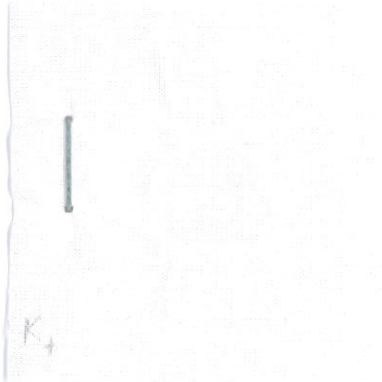
article:

Art. Velvet 600660, 82% Viscose, 18% Polyester, Farbe: loose 002

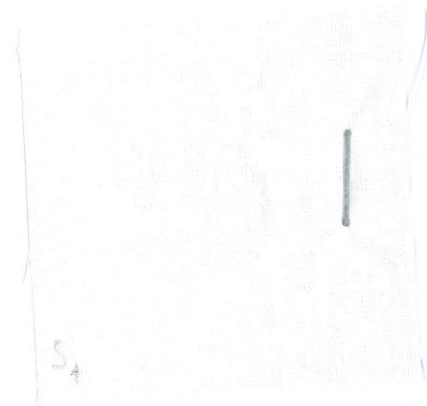
method:

Textiles - Tests for colour fastness - Part X12: Colour fastness to rubbing DIN EN ISO 105-X12:2016-11

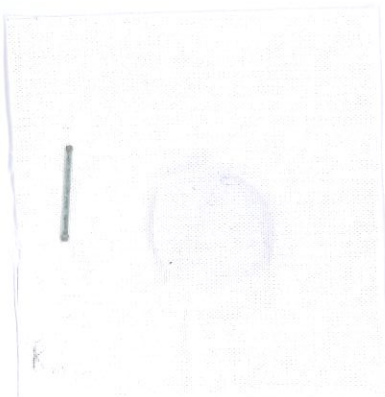
warp  
dry 4-5



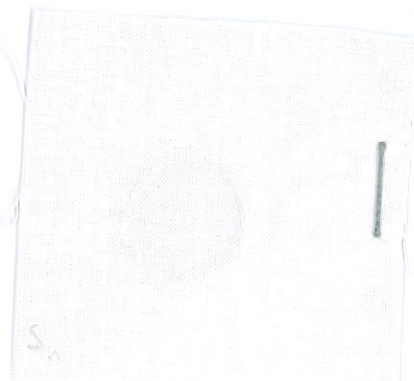
weft  
dry 4-5



warp  
wet 4



weft  
wet 4-5





Investigation report No. 19/256

Attachment

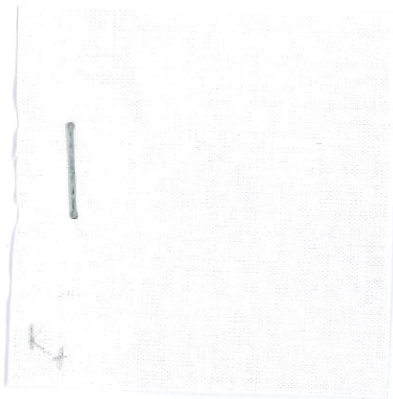
article:

Art. Velvet 600660, 82% Viscose, 18% Polyester, Farbe: loose 003

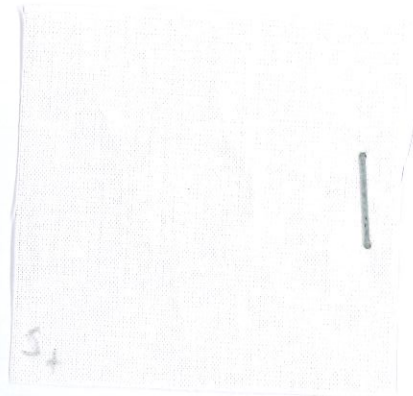
method:

Textiles - Tests for colour fastness - Part X12: Colour fastness to rubbing DIN EN ISO 105-X12:2016-11

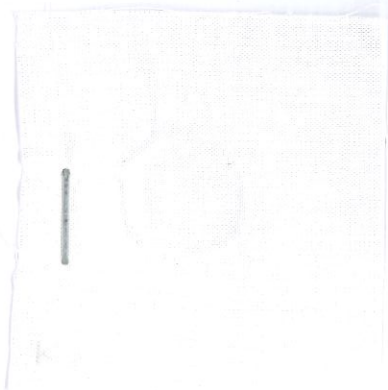
warp  
dry 4-5



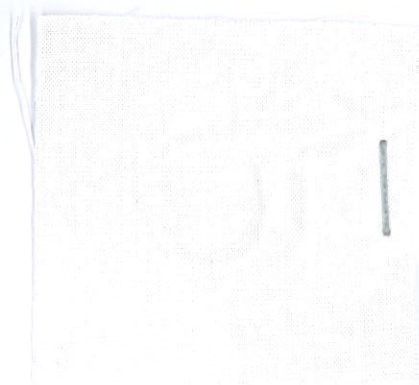
weft  
dry 4-5



warp  
wet 4-5



weft  
wet 4-5



Investigation report No. 19/256

Attachment

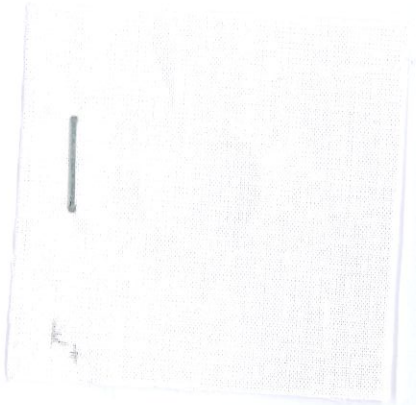
article:

Art. Velvet 600660, 82% Viscose, 18% Polyester, Farbe: loose 004

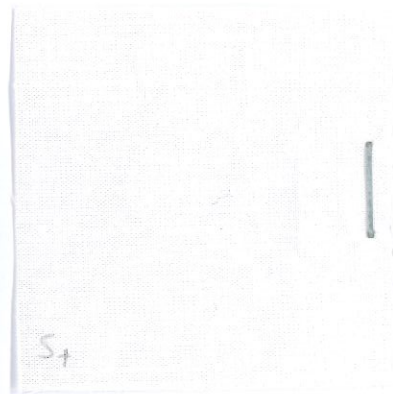
method:

Textiles - Tests for colour fastness - Part X12: Colour fastness to rubbing DIN EN ISO 105-X12:2016-11

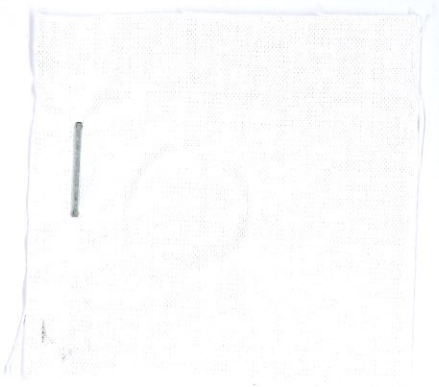
warp  
dry 4-5



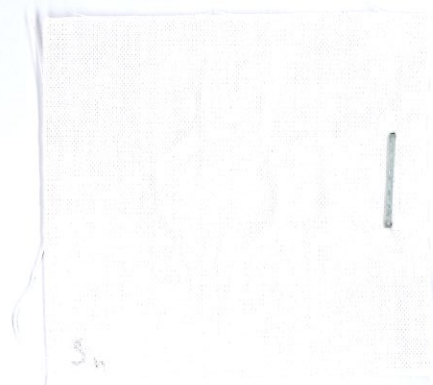
weft  
dry 4-5



warp  
wet 4-5



weft  
wet 4-5



Investigation report No. 19/256

Attachment

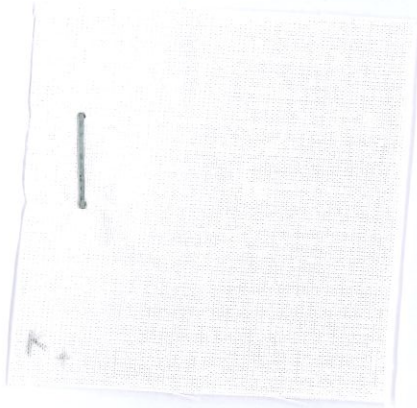
article:

Art. Velvet 600660, 82% Viscose, 18% Polyester, Farbe: loose 005

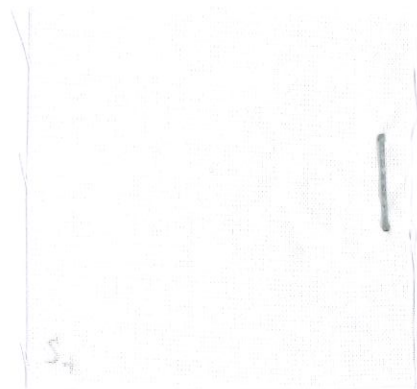
method:

Textiles - Tests for colour fastness - Part X12: Colour fastness to rubbing DIN EN ISO 105-X12:2016-11

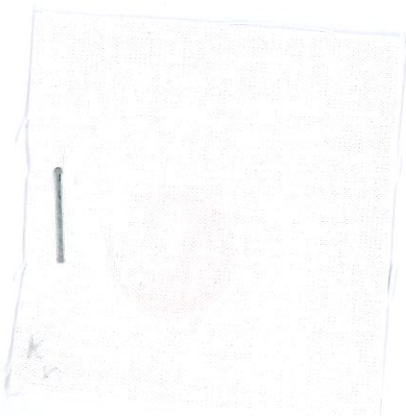
warp  
dry 4-5



weft  
dry 4-5



warp  
wet 4



weft  
wet 4-5

