

Investigation report

SAHCO GmbH
Fr. Sarah Kemmerer
Kreuzburger Str 17-19

90471 Nürnberg

DELCOTEX
Delius Techtex GmbH & Co. KG
Vilsendorfer Str. 50
33739 Bielefeld
Germany

Homepage: www.textillabor.eu

Contact: Erik Radl
Division: Laboratory
Phone: +49 (0) 52 06 / 91 07 - 52
Fax: +49 (0) 52 06 / 91 07 - 34

Date: 28.02.2019

Investigation report No. 19/256

order description: Colour fastness to artificial light: Xenon arc fading lamp
DIN EN ISO 105-B02 (2014-11) in accordance
to DIN EN 14465 (2006-09) Specification Upholstery fabric
Colour fastness to rubbing DIN EN ISO 105-X12 (2016-11) in accordance
to DIN EN 14465 (2006-09) Specification Upholstery fabric
Seam slippage resistance DIN EN ISO 13936-2 (2004-07) in accordance
to DIN EN 14465 (2006-09) Specification Upholstery fabric

sample: 600660 Velvet loose 001 till 005
sampling: by orderer
orderer: see address
date of order: 21.01.2019
date of delivery: 17.01.2019
date of testing: 26.02.2019
number of pages: 5

Remark:

The results are valid only for the tested object. The accreditation applies for the methods listed in the annex to the certificate D-PL-17323-01-00. Accredited test methods are underlined. The valuations and Interpretations in the investigation report are not subject to accreditation. Tests conducted through co-operation partners are marked with °. The content of this investigation report will not be passed to third persons without written approval of the orderer. The partial publication of the test report, as well as the usage for commercial process, is only allowed with a permission of the DELCOTEX Delius Techtex GmbH & Co. KG. Remnants of test material will be destroyed after 3 months. Previously stated specifications / data sheets / certificates are only characters and no warranties. Also no warranty in case of durability will be overtaken. Finally our general delivery and payment conditions are valid (please see www.textillabor.eu).



Investigation report No. 19/256

page 2 of 5

Instructions for performing

- 1. Method:** Colour fastness to artificial light: Xenon arc fading lamp
DIN EN ISO 105-B02 (2014-11) in accordance
to DIN EN 14465 (2006-09) Specification Upholstery fabric
- 2. Measuring conditions:**

Tester: Atlas Xenotest alpha LM
Light: Xenon arc beam
Filtering system: Typ 7
Pick and placement cycling: 240h – until Mark 6

Test results

Sample / Colour	Mark*	Category
600660 Velvet loose 001	5-6	B
600660 Velvet loose 002	5	B
600660 Velvet loose 003	5-6	B
600660 Velvet loose 004	5-6	B
600660 Velvet loose 005	5-6	B

* The results based on using the blue scale.
Note 1 = intense colour change
Note 8 = no colour change

Remark: According to DIN EN 14465 (2006-09), the article is classified in the above-mentioned category with regard to light fastness in furniture fabrics.

Investigation report No. 19/256

Instructions for performing

3. Method: Colour fastness to rubbing DIN EN ISO 105-X12 (2016-11) in accordance to DIN EN 14465 (2006-09) Specification Upholstery fabric

4. Measuring conditions

tester:	Crockmeter
pin:	Ø (16+/-0,1) mm (cylinder)
abrasive:	cotton fabric
strength:	9 +/- 0,2 N
room temperature:	20 +/- 2 °C
humidity:	65 +/- 4 %
conditioned:	>4 h
water absorption:	warp 98,91-100%, weft: 99,09-99,82%

Test results

Article: 600660 Velvet loose 001

	Warp	Weft	Category
Dry-Mark *	4-5	4-5	A
Wet-Mark *	4	4	A

Article: 600660 Velvet loose 002

	Warp	Weft	Category
Dry-Mark *	4-5	4-5	A
Wet-Mark *	4	4-5	A

Article: 600660 Velvet loose 003

	Warp	Weft	Category
Dry-Mark *	4-5	4-5	A
Wet-Mark *	4-5	4-5	A

Investigation report No. 19/256

page 4 of 5

Test results

Article: 600660 Velvet loose 04

	Warp	Weft	Category
Dry-Mark *	4-5	4-5	A
Wet-Mark *	4-5	4-5	A

Article: 600660 Velvet loose 005

	Warp	Weft	Category
Dry-Mark *	4-5	4-5	A
Wet-Mark *	4	4-5	A

* The results based on using the grey scale – ISO 105-A03.

Note 1 = intense colour change

Note 5 = no colour change

Remark: According to DIN EN 14465 (2006-09), the article is classified in the above-mentioned category with regard to fastness to rubbing in furniture fabrics.

Investigation report No. 19/256

page 5 of 5

Instructions for performing

5. Method: Seam slippage resistance DIN EN ISO 13936-2 (2004-07) in accordance to DIN EN 14465 (2006-09) Specification Upholstery fabric

6. Measuring conditions

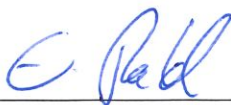
Type: furnishing fabric
Tensile force: 180 N

Test results

Article: 600660 Velvet loose 003

	Seam opening [mm]
Warp direction (seamline weft direction)	2,2 (2,0-3,0)
Weft direction (seamline warp direction)	1,0 (1,0-1,0)

Remark: According to DIN EN 14465 (2006-09) the article, in reference to seam slippage resistance in furnishing fabrics, the article is ranked within **category A**.



i. A. Erik Radl

Laboratory

DELCOTEX Delius Techtex GmbH & Co. KG

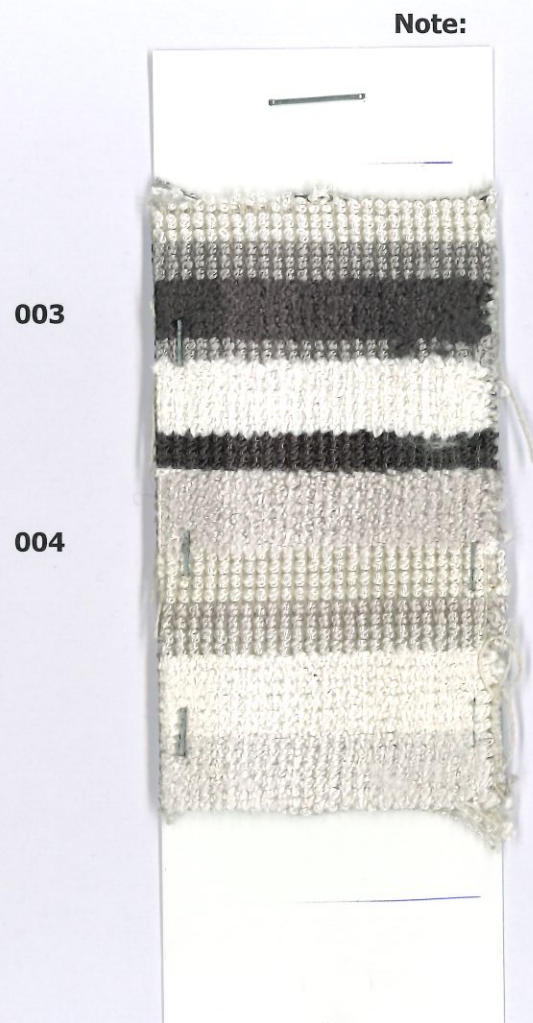
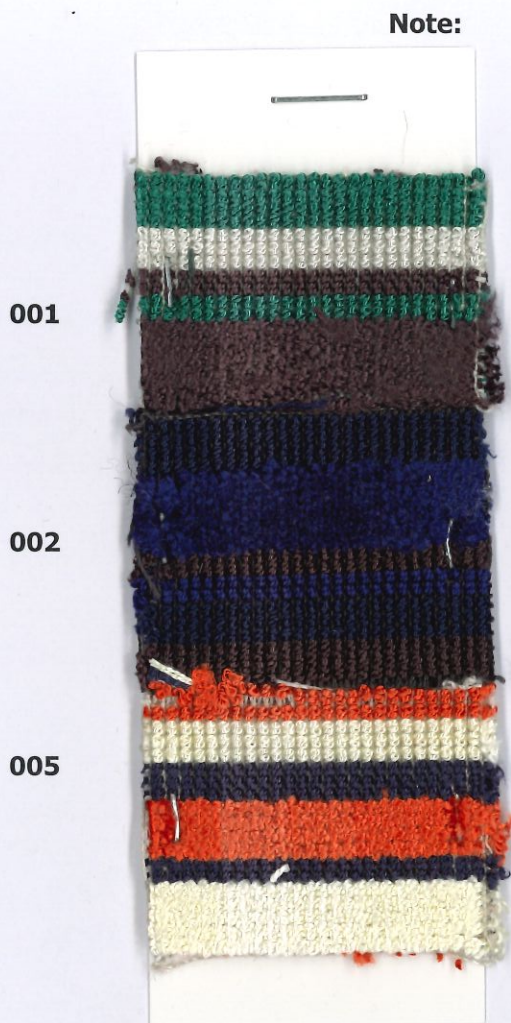
Only the information contained in the signed test report is binding.

Investigation report No. 19/256

Appendix

Article: 600660 Velvet loose

Method: Colour fastness to artificial light: Xenon arc fading lamp
DIN EN ISO 105-B02 (2014-11) method 2



*The end mark refers to the change of colour using the blue scale.
Note 1 = very low colour fastness / strong change in colour
Note 8 = very high colour fastness / no change in colour

Investigation report No. 19/256

Attachment

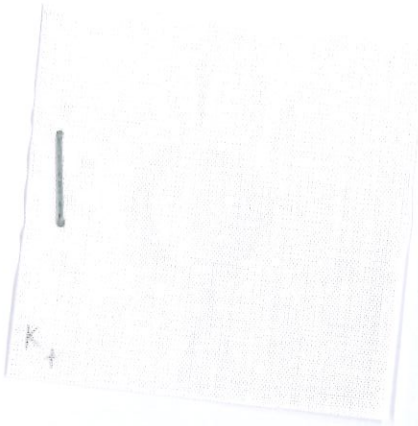
article:

Art. Velvet 600660, 82% Viscose, 18% Polyester, Farbe: loose 001

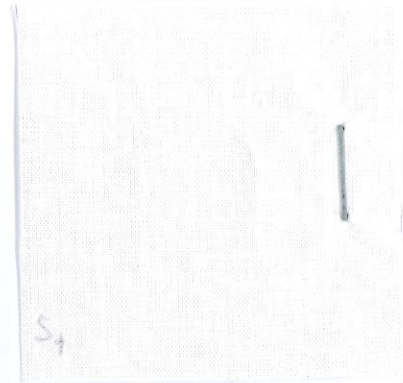
method:

Textiles - Tests for colour fastness - Part X12: Colour fastness to rubbing DIN EN ISO 105-X12:2016-11

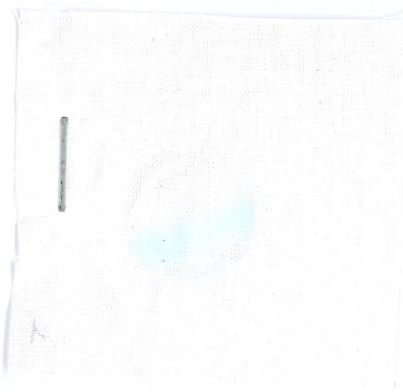
warp
dry 4-5



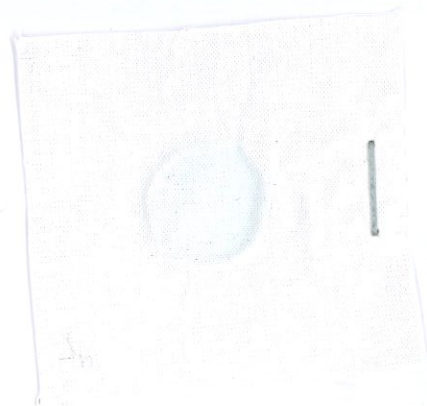
weft
dry 4-5



warp
wet 4



weft
wet 4



Investigation report No. 19/256

Attachment

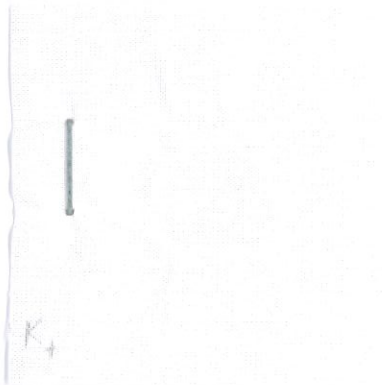
article:

Art. Velvet 600660, 82% Viscose, 18% Polyester, Farbe: loose 002

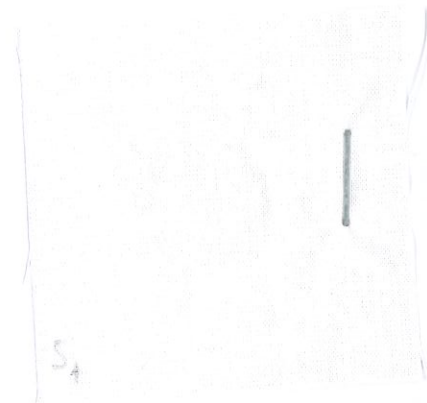
method:

Textiles - Tests for colour fastness - Part X12: Colour fastness to rubbing DIN EN ISO 105-X12:2016-11

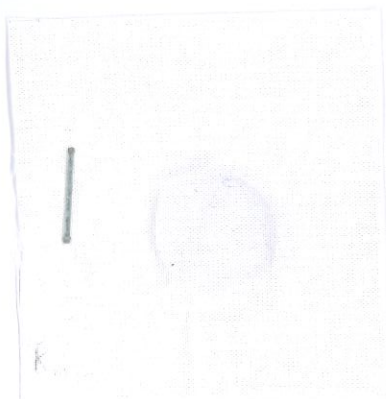
warp
dry 4-5



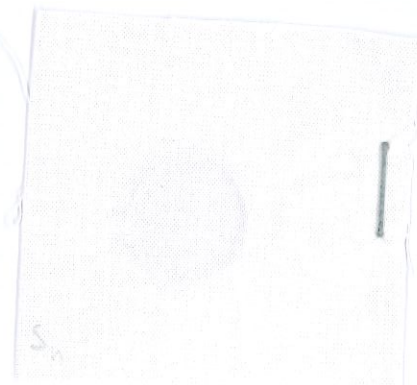
weft
dry 4-5



warp
wet 4



weft
wet 4-5



Investigation report No. 19/256

Attachment

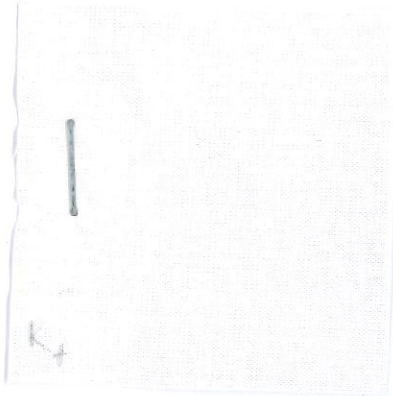
article:

Art. Velvet 600660, 82% Viscose, 18% Polyester, Farbe: loose 003

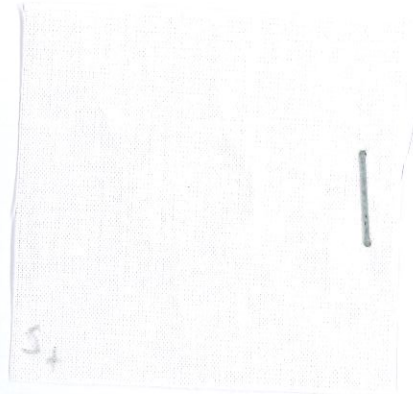
method:

Textiles - Tests for colour fastness - Part X12: Colour fastness to rubbing DIN EN ISO 105-X12:2016-11

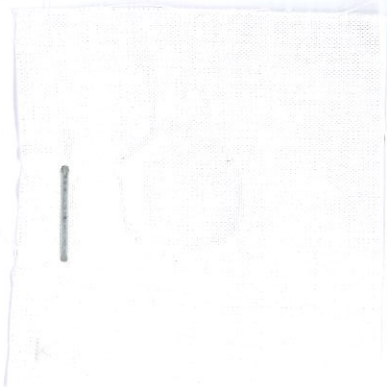
warp
dry 4-5



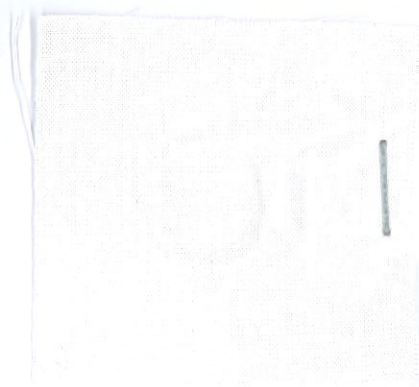
weft
dry 4-5



warp
wet 4-5



weft
wet 4-5



Investigation report No. 19/256

Attachment

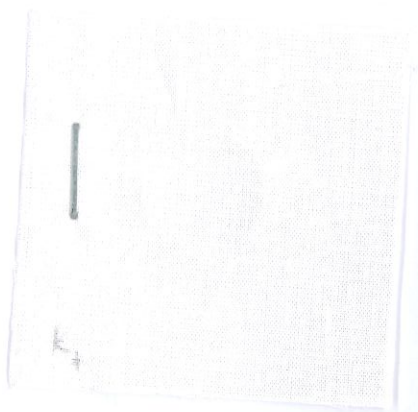
article:

Art. Velvet 600660, 82% Viscose, 18% Polyester, Farbe: loose 004

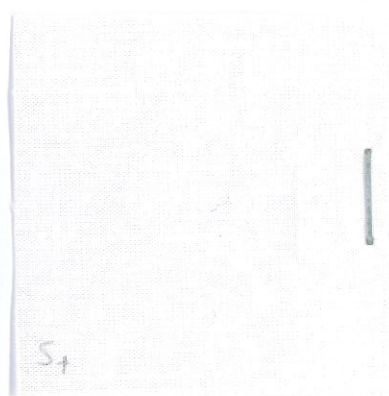
method:

Textiles - Tests for colour fastness - Part X12: Colour fastness to rubbing DIN EN ISO 105-X12:2016-11

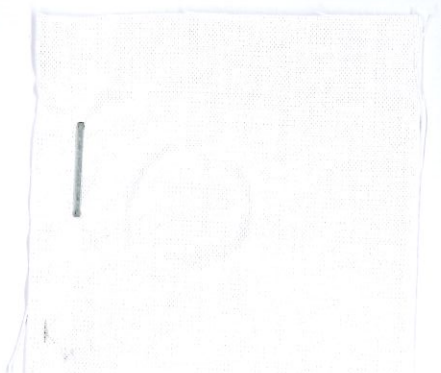
warp
dry 4-5



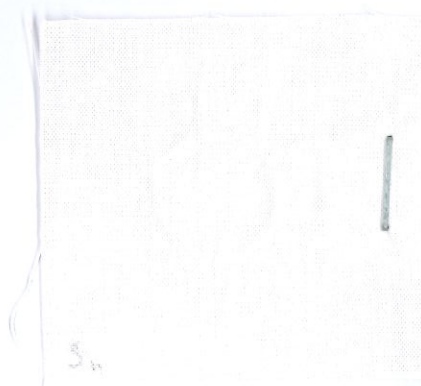
weft
dry 4-5



warp
wet 4-5



weft
wet 4-5



Investigation report No. 19/256

Attachment

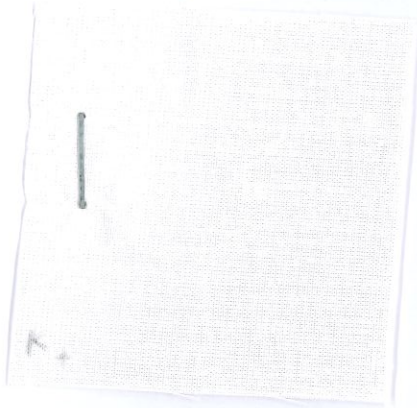
article:

Art. Velvet 600660, 82% Viscose, 18% Polyester, Farbe: loose 005

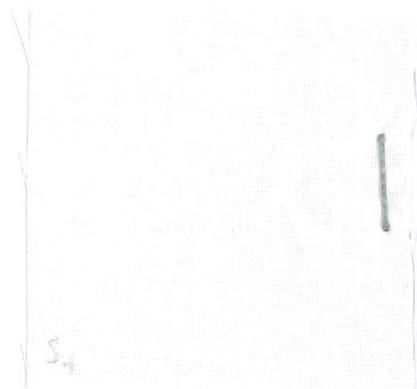
method:

Textiles - Tests for colour fastness - Part X12: Colour fastness to rubbing DIN EN ISO 105-X12:2016-11

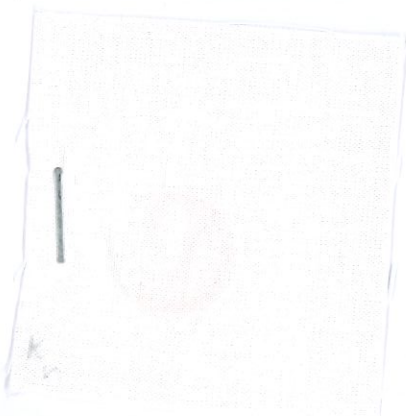
warp
dry 4-5



weft
dry 4-5



warp
wet 4



weft
wet 4-5

