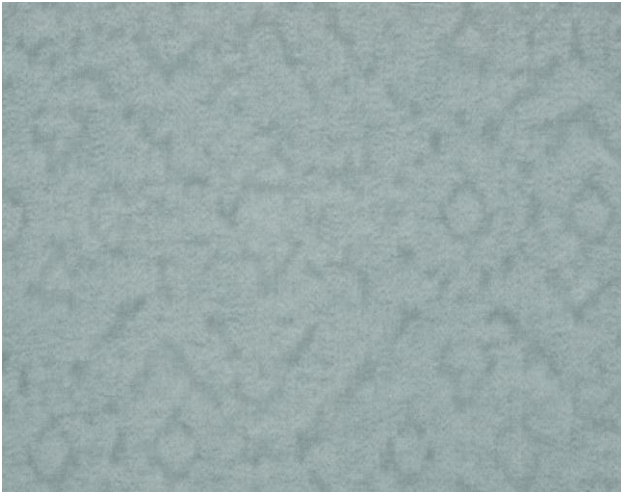


# SAHCO

1831



## Gem

Type: Curtain

Composition: 80% linen, 20% polyester

Yarn type: Staple / Filament

Binding: Jacquard

Width: Approx. 310 cm, 122 inches

Weight: Approx. 300 g/lin.m, 9.7 oz/ly

Repeat: Approx. 33 cm, 13 inches V / 146 cm, 57.5 inches H

Colour difference may occur

Handwash or gentle machine wash 30°C

Drip drying

Shrinkage approx. 3% when washed at 30°C.

Ironing might be necessary.

Disinfection, see [kvadrat.dk/en/sahco](http://kvadrat.dk/en/sahco)

More info: Care and maintenance [kvadrat.dk/en/sahco](http://kvadrat.dk/en/sahco)



**2** year  
warranty

## Lightfastness

Note 5-6 ISO 105-B02

## Quality benefits

Washable

## Environmental benefits

Follow the EU Ecolabel dye restrictions incl. AZO dye and heavy metal restrictions

REACH compliant

Californian Proposition 65 list compliant

LBC Red list compliant

## Green building certificates

Greenguard Gold: Low chemical emission

Health Product Declaration (HPD): Declaring textile content and substance

## Country of origin

Italy

## Warranty

2 years. See terms and conditions on [kvadrat.dk](http://kvadrat.dk)

Kvadrat packaging and cardboard is recyclable. Cardboard material is FSC certified and / or contains recycled content.

For further information

[www.kvadrat.dk/en/sahco](http://www.kvadrat.dk/en/sahco)