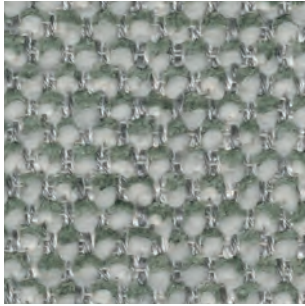
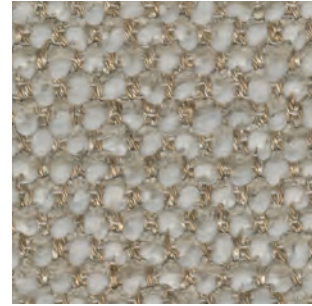


Safire

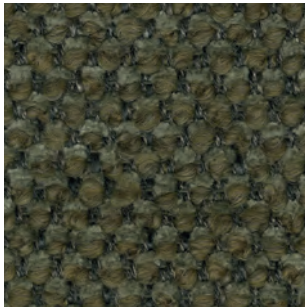
**SAHCO**



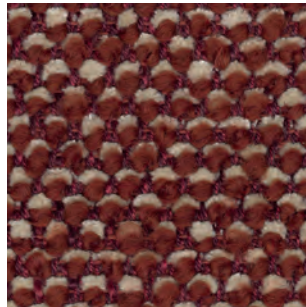
006



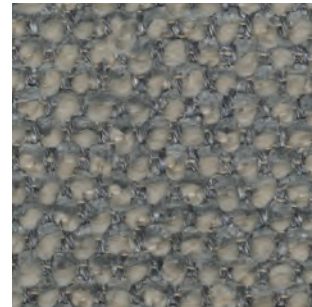
014



005



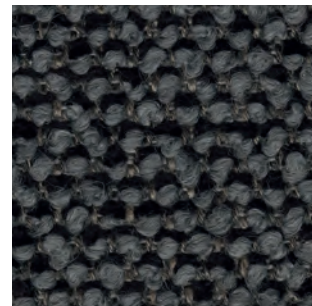
013



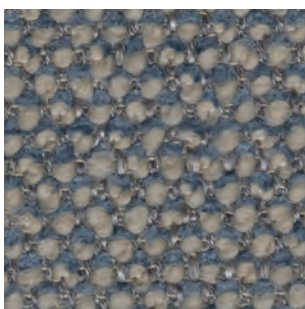
008



011



009



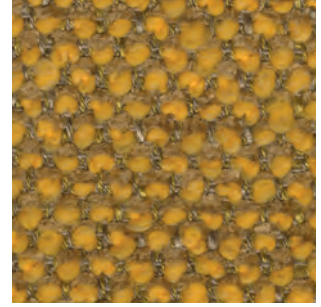
012



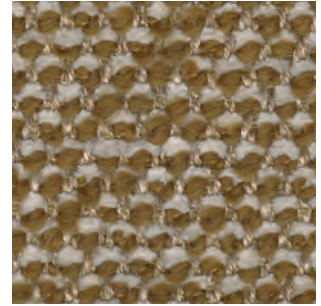
010



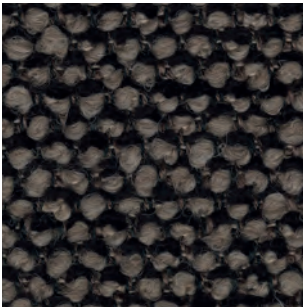
007



017



016



003



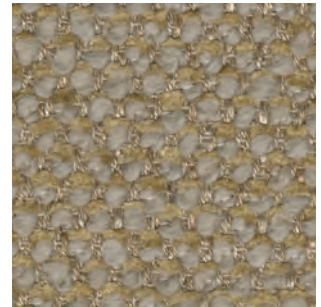
002



004



001



015

## Safire

## DK

## Anvendelse Polstring

**Beskrivelse** 43% viscose, 17% polyacryl, 15% uld, 9% bomuld, 8% hør, 8% polyester. Bredde 140 cm / 55 in. Vægt 1.010 g/lbm  
**Testning** Lysægted 6 (ISO 1-8). Pilling 3 (ISO 1-5). Slidstyrke: 40.000 Martindale. Krympning ca. 2%. Flammesikring BS 5852 Crib 5 med behandling. BS 5852 part 1. EN 1021-1/2  
**Vedligeholdelse** Se ISO symboler

## UK/US

## Application Upholstery

**Description** 43% Viscose, 17% Acrylic, 15% New Wool, 9% Cotton, 8% Linen, 8% Polyester. Width 140 cm / 55 in. Weight 1010 g/lm 36 oz/sq  
**Tests** Lightfastness 6 (ISO 1-8). Pilling 3 (ISO 1-5). Durability 40.000 Martindale. Shrinkage ca. 2%. Flame resistance BS 5852 Crib 5 with treatment. BS 5852 part 1. EN 1021-1/2  
**Care** Please see the ISO symbols

## DE

## Anwendungsbereich Bezugsstoff

**Beschreibung** 43% Viskose, 17% Acryl, 15% Wolle, 9% Baumwolle, 8% Leinen, 8% Polyester. Breite 140 cm / 55 in. Gewicht 1.010 g/lfd. Meter  
**Testergebnisse** Lichtechtheit 6 (ISO 1-8). Pilling 3 (ISO 1-5). Scheuertouren 40.000 Martindale. Einlaufquote ca. 2%. Flammenschutz BS 5852 Crib 5 mit Behandlung. BS 5852 part 1. EN 1021-1/2  
**Pflege** Siehe ISO Pflegesymbole

## NL

## Toepassing Bekleding stof

**Omschrijving** 43% viscose, 17% acryl, 15% wol, 9% katoen, 8% linnen, 8% polyester. Hoogte 140 cm / 55 in. Gewicht 1.010 gr/str.m  
**Testgegevens** Lichtechtheid 6 (ISO 1-8). Pilling 3 (ISO 1-5). Durability 40.000 Martindale. Washbelading ca. 2%. Vlamvertragendheid BS 5852 Crib 5 met behandeling. BS 5852 part 1. EN 1021-1/2  
**Onderhoud** Zie de ISO symbolen

## FR

## Domaine d'utilisation Tissu d'ameublement

**Description** 43% viscose, 17% acrylique, 15% laine, 9% coton, 8% lin, 8% polyester. Largeur 140 cm / 55 in. Poids 1.010 g/ml  
**Tests** Résistance à la lumière 6 (ISO 1-8). Résistance au frottement 3 (ISO 1-5). Résistance à l'abrasion 40.000 Martindale. Rétrécissement env. 2%. Normes au feu BS 5852 Crib 5 avec traitement. BS 5852 part 1. EN 1021-1/2  
**Entretien** Voir les symboles ISO

## IT

## Destinazione d'uso Tessuti per tappezzeria

**Caratteristiche** 43% viscosa, 17% acrilico, 15% lana, 9% cotone, 8% lino, 8% poliestere. Larghezza 140 cm / 55 in. Peso 1.010 gr/ml  
**Test** Resistenza alla luce 6 (ISO 1-8). Pilling 3 (ISO 1-5). Abrasione 40.000 Martindale. Restringimento circa 2%. Ignifugazione BS 5852 Crib 5 con il trattamento. BS 5852 part 1. EN 1021-1/2  
**Manutenzione** Per favore seguire simboli ISO

## ES

## Aplicación Tapicería

**Descripción** 43% viscosa, 17% poliacrílica, 15% lana, 9% algodón, 8% lino, 8% poliéster. Anchura 140 cm / 55 in. Peso 1.010 gr/ml  
**Pruebas** Resistencia a la luz 6 (ISO 1-8). Relleno 3 (ISO 1-5). Resistencia al desgaste 40.000 Martindale. Encogimiento aprox. 2%. Resistencia al fuego BS 5852 Crib 5 con tratamiento. BS 5852 part 1. EN 1021-1/2  
**Mantenimiento** Consulte los símbolos ISO

## JP

## 用途 室内装飾用テキスタイル

**組成** ビスコース 43%, アクリル 17%, ニューウール 15%, 綿 9%, 麻 8%, ポリエステル 8%. 幅 140 cm / 55 インチ. 重さ 1,010 g/lin.m  
**テスト** 耐光性 6 (ISO 1-8). ピリング 3 (ISO 1-5). 耐久性 マーチンデール値 - 40,000. 収縮 約 2%  
**ケア** 詳細は、ISO認証をご覧ください

## CN

## 应用 软装面料

**成分** 43%粘胶纤维, 17%腈纶, 15%羊毛, 9%棉, 8%亚麻, 8%涤纶. 幅宽 140 cm / 55 in. 克重 1,010 g/lin.m  
**耐磨指数** 耐光性 6 (ISO 1-8). 抗起球度 3 (ISO 1-5). 耐久度 40,000 次马丁代尔摩擦实验 (Martindale). 缩水率 大约2%  
**维护** 请参阅ISO符号



Contact and further information [www.sahco.com](http://www.sahco.com)

Quality and environmental system accreditation according to ISO 9001 and ISO 14001

Encouraging the use of suitable fibres. Durable and high quality. Hazardous substances restricted.