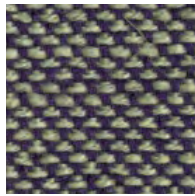


SUNNIVA 3

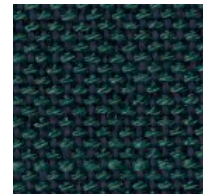
KVADRAT / RAF SIMONS



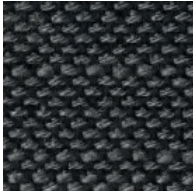
193



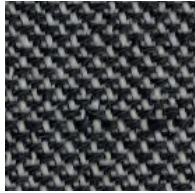
952



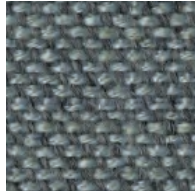
863



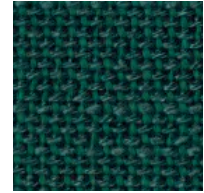
173



163



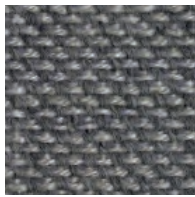
152



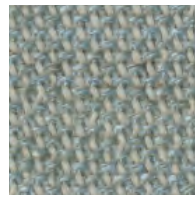
953



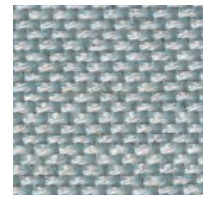
183



242



132



723



763



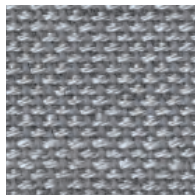
223



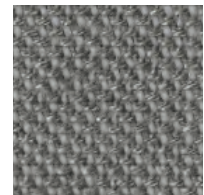
113



1079

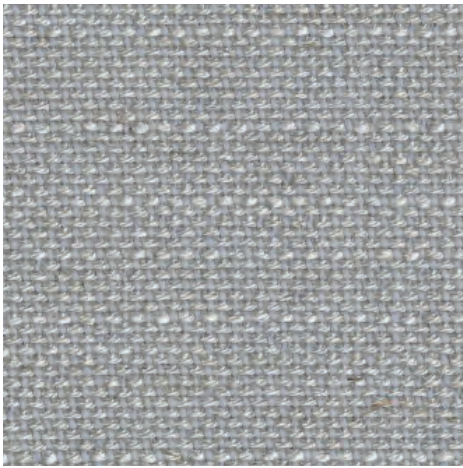


133



153

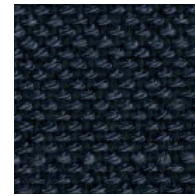
SUNNIVA 3



713



752



783



192



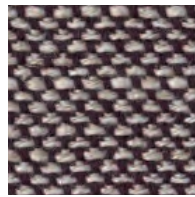
773



423



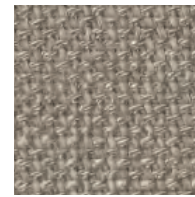
236



352



717



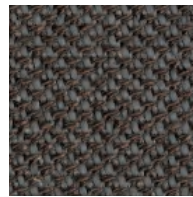
233



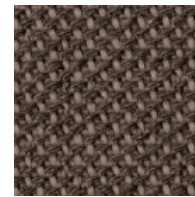
811



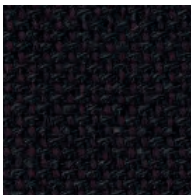
662



353



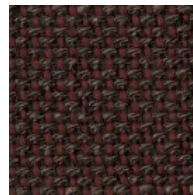
253



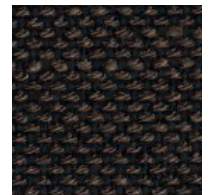
683



373



363



383

## SUNNIVA 3 RAF SIMONS AND FANNY ARONSEN

DK

**Anvendelse**

Kantorer, hoteller, institutioner, private indretninger.  
Stor slidstyrke.

**Beskrivelse**

58% ny uld, 25% viskose, 8% hør, 5% nylon, 4% polyester. Bredde ca. 140 cm. Vægt ca. 590 g/lbm. Garnfarvet. Nuanceforskel kan forekomme.

**Ægkant** ↓

**Slidstyrke:** Ca. 50.000 slidbevægelser efter Martindale metoden ENISO 12947. **Lysægthed (ISO) 4-7. Pilling (ENISO) 3. Gnidægthed (ISO) tør 4-5, våd 3-5. Flammesikring:** AS/NZS 3837 Class 2, BS 5852 Crib 5 med flammesikring, EN 1021-1/2. IMO FTP Code 2010:Part 8 med flammesikring, NFPA 260, US Cal. Bull. 117-2013. (Kopi af testrapport kan rekvireres).

**Vedligeholdelse**

Se ISO symboler. Desinfektion, se kvadrat.dk.

UK/US

**Application**

Offices, hotels, institutions, domestic use.  
Great durability.

**Description**

58% new wool, 25% viscose, 8% linen, 5% nylon, 4% polyester. Width app. 55 inches (140 cm). Weight app. 590 g/lin.m, 18.9 oz/ly. Yarn dyed. Colour differences may occur.

**Selvedge/Direction** ↓

**Abrasion:** App. 50,000 rubs acc. to the Martindale method ENISO 12947\*.

**Lightfastness (ISO) 4-7. Pilling (ENISO) 3.**

**Fastness to rubbing (ISO) dry 4-5, wet 3-5.**

**Flame resistance:** AS/NZS 3837 Class 2, BS 5852 Crib 5 with treatment, EN 1021-1/2. IMO FTP Code 2010:Part 8 with treatment, NFPA 260, US Cal. Bull. 117-2013. (Copy of test report available).

**Care**

Please see the ISO symbols. Disinfection, see kvadrat.dk.

DE

**Anwendungsbereich**

Büros, Hotels, Objektbereich, privater Wohnbereich. Hohe Strapazierfähigkeit.

**Beschreibung**

58% Schurwolle, 25% Viskose, 8% Leinen, 5% Nylon, 4% Polyester. Breite ca. 140 cm. Gewicht ca. 590 g/m. Garngefärbt. Farbunterschiede können vorkommen.

**Webkant** ↓

**Scheuerfestigkeit:** Ca. 50.000 Scheuerhübe nach der Martindale Methode ENISO 12947.

**Lichtechtheit (ISO) 4-7. Pilling (ENISO) 3.**

**Reibechtheit (ISO) trocken 4-5, nass 3-5.**

**Flammschutz:** AS/NZS 3837 Class 2, BS 5852 Crib 5 mit Ausrüstung, EN 1021-1/2. IMO FTP Code 2010:Part 8 mit FR Ausrüstung, NFPA 260, US Cal. Bull. 117-2013. (Testbericht verfügbar).

**Pflege**

Siehe ISO Pflegesymbole. Desinfektion, siehe kvadrat.dk.

NL

**Toepassing**

Kantoren, hotels, instellingen, de privésfeer.  
Uitstekende slijtvastheid.

**Omschrijving**

58% scheerwol, 25% viscose, 8% linnen, 5% nylon, 4% polyester. Breedte ca. 140 cm. Gewicht ca. 590 gr/str. m. Garengescheiden kunnen optreden.

**Zelfkant** ↓

**Slidvastheid:** Ca. 50.000 toeren Martindale ENISO 12947. **Lichtechtheid (ISO) 4-7. Pilling (ENISO) 3. Wrijftechtheid (ISO) droog 4-5, nat 3-5. Brandwerendheid:** AS/NZS 3837 Class 2, BS 5852 Crib 5 met FR behandeling, EN 1021-1/2. IMO FTP Code 2010:Part 8 met behandeling, NFPA 260, US Cal. Bull. 117-2013. (Op aanvraag sturen wij u graag een kopie van het testrapport toe).

**Onderhoud**

Zie de ISO symbolen. Desinfectie, kvadrat.dk.

FR

**Domaine d'utilisation**

Tissu d'aménagement pour aménagement privé et public. Grande résistance.

**Description**

58% laine vierge, 25% viscose, 8% lin, 5% nylon, 4% polyester. Largeur env. 140 cm. Poids env. 590 g/m lg. Teinture au fil. Ecart de coloris possibles.

**Lisière** ↓

**Résistance à l'abrasion:** Env. 50.000 révolutions selon le procédé Martindale ENISO 12947. **Résistance à la lumière (ISO) 4-7.**

**Boulochage (ENISO) 3. Résistance au frottement (ISO) sec 4-5, mouillé 3-5. Normes au feu:** AS/NZS 3837 Class 2, BS 5852 Crib 5 avec traitement, EN 1021-1/2. IMO FTP Code 2010:Part 8 avec traitement, NFPA 260, US Cal. Bull. 117-2013. (La copie du compte rendu des tests est disponible sur demande).

**Entretien**

Voir les symboles ISO. Désinfection, voir kvadrat.dk.

IT

**Destinazione d'uso**

Rivestimento per imbottiti casa e contract. Alta resistenza all'abrasione.

**Caratteristiche**

58% lana virgin, 25% viscosa, 8% lino, 5% nylon, 4% poliestere. Altezza circa 140 cm. Peso circa 590 gr/ml. Tinto in filo. Possibili differenze per colore.

**Cimosa** ↓

**Abrasion:** circa 50.000 cicli/metodo Martindale EN ISO 12947. **Resistenza alla luce (ISO) 4-7. Pilling (ENISO) 3. Resistenza allo sfregamento (ISO) condizione a secco 4-5, condizione umido 3-5. Ignifugazione:** AS/NZS 3837 Class 2, BS 5852 Crib 5 trattato ignifugo, EN 1021-1/2. IMO FTP Code 2010:Part 8 trattato ignifugo, NFPA 260, US Cal. Bull. 117-2013. (Disponibile copia del test).

**Manutenzione**

Per favore seguire simboli ISO. Per disinfettare, vedi il sito kvadrat.dk.

ES

**Aplicación**

Oficinas, hoteles, instituciones, uso doméstico. Gran resistencia al desgaste.

**Descripción**

58% lana virgen, 25% viscosa, 8% lino, 5% nilón, 4% poliéster. Anchura aprox. 140 cm. Peso aprox. 590 gr/ml. Hilo teñido. Posibles variaciones de color.

**Filo** ↓

**Resistencia al desgaste:** Aprox. 50.000 ciclos según el método Martindale EN ISO 12947. **Resistencia a la luz (ISO) 4-7. Relleno (EN ISO) 3. Solidez al frotamiento (ISO) seco 4-5, mojado 3-5. Resistencia al fuego:** AS/NZS 3837 Class 2, BS 5852 Crib 5 con tratamiento, EN 1021-1/2. IMO FTP Code 2010:Part 8 con tratamiento, NFPA 260, US Cal. Bull. 117-2013. (Copia del informe de ensayos disponible).

**Mantenimiento**

Consulte los símbolos ISO. Desinfección, visita kvadrat.dk.

JP

**用途**

オフィス、ホテル、各種施設、住宅など。耐摩耗性大。

**詳細**

58% ニューウール, 25% ビスコース, 8% リネン, 5% ポリアミド, 4% ポリエステル。幅: 140 cm。重量: 1mあたり約 590 g。糸染め。色彩に差が生じる可能性あり。

**耳, ふち, ↓**

**磨耗:** マーチンデール法により摩擦運動約 50,000 回。EN ISO 2947. **色あせ保証 (ISO) 4-7. ビリング (ENISO) 3. 摩擦保証 (ISO) ドライ 4-5, ウェット 3-5. 耐炎性:** AS/NZS 3837 Class 2. 特殊耐炎処理を行うことにより, BS 5852 Crib 5 に到達可能。EN 1021-1/2. 特殊耐炎処理を行うことにより, IMO FTP Code 2010:Part 8 に到達可能。NFPA 260, US Cal. Bull. 117-2013. (テストレポートのコピー入手可能。)

**手入れ**

ISO シンボル参照。消毒について? kvadrat.dk まで参照ください。

CN

**适用范围**

办公室, 宾馆酒店, 公共设施, 居家使用。耐耗性大。

**成分**

58% 新羊毛, 25% 粘胶纤维, 8% 亚麻, 5% 尼龙, 4% 涤纶。幅宽约 55 英寸 (140 cm)。重量约 590 克/延米, 纱线染色面料。颜色可能稍有色差。

**织边方向** ↓

**马丁代尔法**约 50,000 转, EN ISO 12947. **光照色牢度 (ISO) 4-7. 起毛起球 (ENISO) 3. 摩擦色牢度 (ISO) 干燥 4-5、湿 3-5. 阻燃性:** AS/NZS 3837 Class 2. 特别耐火处理时 BS 5852 Crib 5 可以满足, EN 1021-1/2. 特别耐火处理时 IMO FTP Code 2010:Part 8 可以满足, NFPA 260, US Cal. Bull. 117-2013. (可提供测试报告副本)。

**维护**

请参照 ISO 标志。消毒请参阅 kvadrat.dk。



Quality and environmental system accreditation according to ISO 9001 and ISO 14001.

\* ACT® Registered Certification Marks

\* Abrasion test results exceeding ACT performance guidelines are not an indicator of product lifespan. Multiple factors affect fabric durability and appearance retention.

Contact and further information [www.kvadrat.dk](http://www.kvadrat.dk)



US contact info: 1-800-620-9309