

Test Report

Report Number:
984328-1-TEX



**DANISH
TECHNOLOGICAL
INSTITUTE**

Gregersensvej 1
DK-2630 Taastrup
+45 72 20 20 00
info@teknologisk.dk
www.teknologisk.dk

Page 1 of 3
Init.: CHF/LELN
Order no.: 984328
Encl.: 0

- Assignor:** Kvadrat A/S, Lundbergsvej 10, DK-8400 Ebeltøft
- Material:** Sample of upholstery fabric designated: Molly 2 0110. See page 2 for detailed sample description.
- Sampling:** The assignor confirms having selected the product. The product was forwarded by the assignor and received at Danish Technological Institute on 8 June 2021.
- Period:** The test took place from 11 June 2021 to 14 June 2021.
- Method:** The test methods used are referenced in connection with the results. See page 3.
- Test results:** The results are shown on page 3.
- Terms:** This test was conducted accredited in accordance with international requirements (ISO/IEC 17025:2017) and in accordance with the General Terms and Conditions of Danish Technological Institute. The test results solely apply to the tested item. This test report may be quoted in extract only if Danish Technological Institute has granted its written consent.
- Place:** Danish Technological Institute, Taastrup, Building and Construction
- Signature:** This document is only valid with a digital signature from Danish Technological Institute. The date of issue appears from the digital signature.
- Charlotte Fischer
Senior Consultant



DIGITALLY SIGNED DOCUMENT

15 June 2021

DANISH TECHNOLOGICAL INSTITUTE



DANAK

TEST Reg.no. 2



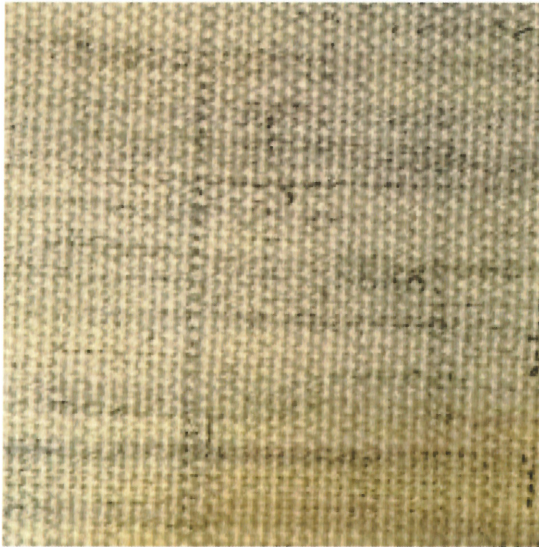
Sample

Description: Upholstery fabric

Designated: Molly 2 0110, Batch number: W83512/ Serial number: W83510/6

Fibre content: 100% New wool

Photo:





Results

Test of Sample of upholstery fabric designated: Molly 2 0110

Determination of the slippage resistance of yarns at a seam in woven fabrics - Fixed load method

EN ISO 13936-2:2004

Test conditions: 21°C, 65% RH

Performed on	Load [N]	Seam parallel to warp	Seam parallel to weft
Standard seam	180	mm seam opening <i>Average of determinations</i>	4 mm seam opening <i>Average of 5 determinations</i>
The threads in the warp direction was pulled out before reaching 180 Newton.			

Test Report

Report Number:
984328-2-TEX



**DANISH
TECHNOLOGICAL
INSTITUTE**

Gregersensvej 1
DK-2630 Taastrup
+45 72 20 20 00
info@teknologisk.dk
www.teknologisk.dk

Page 1 of 3
Init.: CHF/LELN
Order no.: 984328
Encl.: 0

- Assignor:** Kvadrat A/S, Lundbergsvej 10, DK-8400 Ebeltoft
- Material:** Sample of upholstery fabric designated: Molly 2 0112. See page 2 for detailed sample description.
- Sampling:** The assignor confirms having selected the product. The product was forwarded by the assignor and received at Danish Technological Institute on 8 June 2021.
- Period:** The test took place from 10 June 2021 to 14 June 2021.
- Method:** The test methods used are referenced in connection with the results. See page 3.
- Test results:** The results are shown on page 3.
- Terms:** This test was conducted accredited in accordance with international requirements (ISO/IEC 17025:2017) and in accordance with the General Terms and Conditions of Danish Technological Institute. The test results solely apply to the tested item. This test report may be quoted in extract only if Danish Technological Institute has granted its written consent.
- Place:** Danish Technological Institute, Taastrup, Building and Construction
- Signature:** This document is only valid with a digital signature from Danish Technological Institute. The date of issue appears from the digital signature.

Charlotte Fischer
Senior Consultant



DIGITALLY SIGNED DOCUMENT

15 June 2021

DANISH TECHNOLOGICAL INSTITUTE



DANAK

TEST Reg.no. 2



Sample

Description: Upholstery fabric

Designated: Molly 2 0112, Batch number: W92440/ Serial number: W92440/8

Fibre content: 100% New wool

Photo:





Results

Test of Sample of upholstery fabric designated: Molly 2 0112

Determination of the slippage resistance of yarns at a seam in woven fabrics - Fixed load method

EN ISO 13936-2:2004

Test conditions: 21°C, 65% RH

Performed on	Load [N]	Seam parallel to warp	Seam parallel to weft
Standard seam	180	3 mm seam opening <i>Average of 5 determinations</i>	2.5 mm seam opening <i>Average of 5 determinations</i>

Test Report

Report Number:
984328-3-TEX



**DANISH
TECHNOLOGICAL
INSTITUTE**

Gregersensvej 1
DK-2630 Taastrup
+45 72 20 20 00
info@teknologisk.dk
www.teknologisk.dk

Page 1 of 3
Init.: CHF/LELN
Order no.: 984328
Encl.: 0

- Assignor:** Kvadrat A/S, Lundbergsvej 10, DK-8400 Ebeltoft
- Material:** Sample of upholstery fabric designated: Molly 2 0114. See page 2 for detailed sample description.
- Sampling:** The assignor confirms having selected the product. The product was forwarded by the assignor and received at Danish Technological Institute on 8 June 2021.
- Period:** The test took place from 10 June 2021 to 14 June 2021.
- Method:** The test methods used are referenced in connection with the results. See page 3.
- Test results:** The results are shown on page 3.
- Terms:** This test was conducted accredited in accordance with international requirements (ISO/IEC 17025:2017) and in accordance with the General Terms and Conditions of Danish Technological Institute. The test results solely apply to the tested item. This test report may be quoted in extract only if Danish Technological Institute has granted its written consent.
- Place:** Danish Technological Institute, Taastrup, Building and Construction
- Signature:** This document is only valid with a digital signature from Danish Technological Institute. The date of issue appears from the digital signature.

Charlotte Fischer
Senior Consultant



DIGITALLY SIGNED DOCUMENT

15 June 2021

DANISH TECHNOLOGICAL INSTITUTE



DANAK

TEST Reg.no. 2



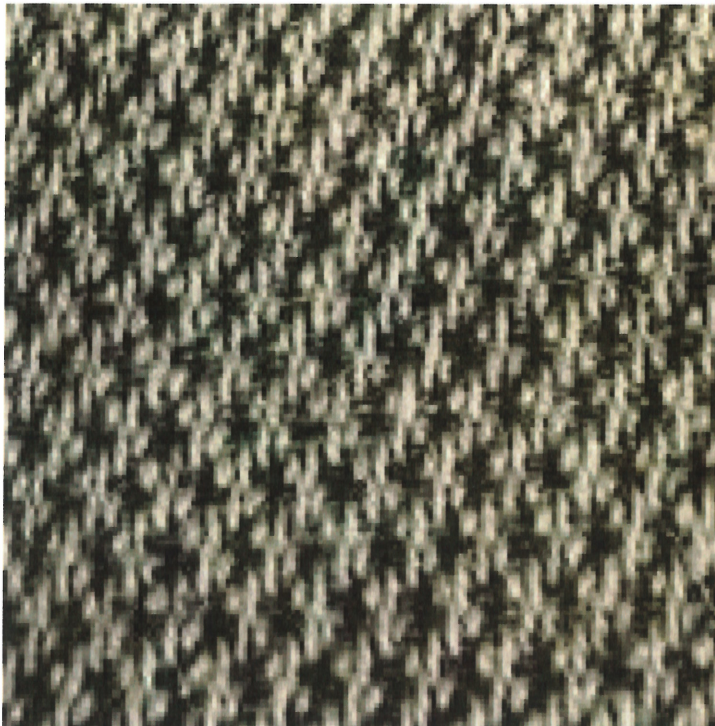
Sample

Description: Upholstery fabric

Designated: Molly 2 0114, Batch number: W92943/ Serial number: W92943/8

Fibre content: 100% New wool

Photo:





Results

Test of Sample of upholstery fabric designated: Molly 2 0114

Determination of the slippage resistance of yarns at a seam in woven fabrics - Fixed load method

EN ISO 13936-2:2004

Test conditions: 21°C, 65% RH

Performed on	Load [N]	Seam parallel to warp	Seam parallel to weft
Standard seam	180	5.5 mm seam opening <i>Average of 5 determinations</i>	5 mm seam opening <i>Average of 5 determinations</i>

Test Report

Report Number:
984328-4-TEX



**DANISH
TECHNOLOGICAL
INSTITUTE**

Gregersensvej 1
DK-2630 Taastrup
+45 72 20 20 00
info@teknologisk.dk
www.teknologisk.dk

Page 1 of 3
Init.: CHF/LELN
Order no.: 984328
Encl.: 0

- Assignor:** Kvadrat A/S, Lundbergsvej 10, DK-8400 Ebeltoft
- Material:** Sample of upholstery fabric designated: Molly 2 0116. See page 2 for detailed sample description.
- Sampling:** The assignor confirms having selected the product. The product was forwarded by the assignor and received at Danish Technological Institute on 8 June 2021.
- Period:** The test took place from 10 June 2021 to 14 June 2021.
- Method:** The test methods used are referenced in connection with the results. See page 3.
- Test results:** The results are shown on page 3.
- Terms:** This test was conducted accredited in accordance with international requirements (ISO/IEC 17025:2017) and in accordance with the General Terms and Conditions of Danish Technological Institute. The test results solely apply to the tested item. This test report may be quoted in extract only if Danish Technological Institute has granted its written consent.
- Place:** Danish Technological Institute, Taastrup, Building and Construction
- Signature:** This document is only valid with a digital signature from Danish Technological Institute. The date of issue appears from the digital signature.

Charlotte Fischer
Senior Consultant



DIGITALLY SIGNED DOCUMENT

15 June 2021

DANISH TECHNOLOGICAL INSTITUTE



DANAK

TEST Reg.no. 2



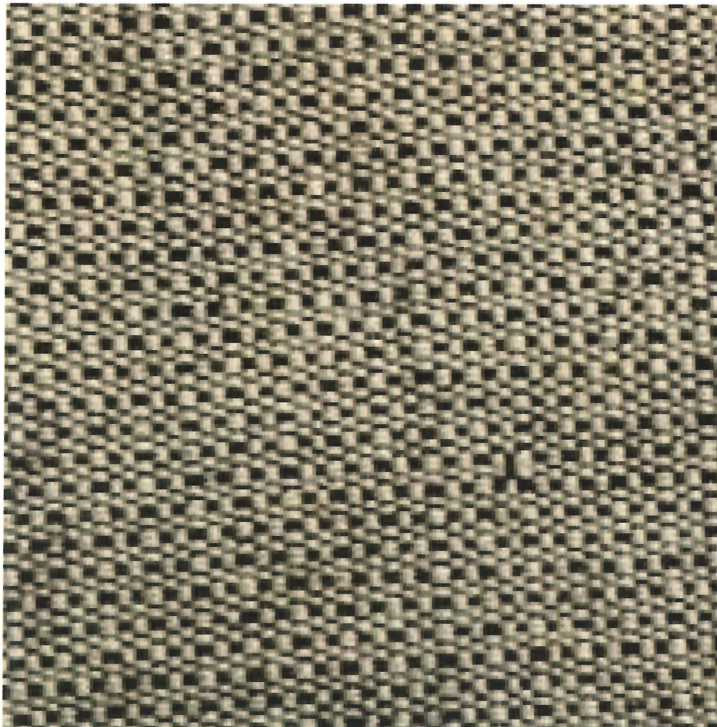
Sample

Description: Upholstery fabric

Designated: Molly 2 0116, Batch number: W91457/ Serial number: W91457/5

Fibre content: 100% New wool

Photo:





Results

Test of Sample of upholstery fabric designated: Molly 2 0116

Determination of the slippage resistance of yarns at a seam in woven fabrics - Fixed load method

EN ISO 13936-2:2004

Test conditions: 21°C, 65% RH

Performed on	Load [N]	Seam parallel to warp	Seam parallel to weft
Standard seam	180	4 mm seam opening <i>Average of 5 determinations</i>	2.5 mm seam opening <i>Average of 5 determinations</i>
