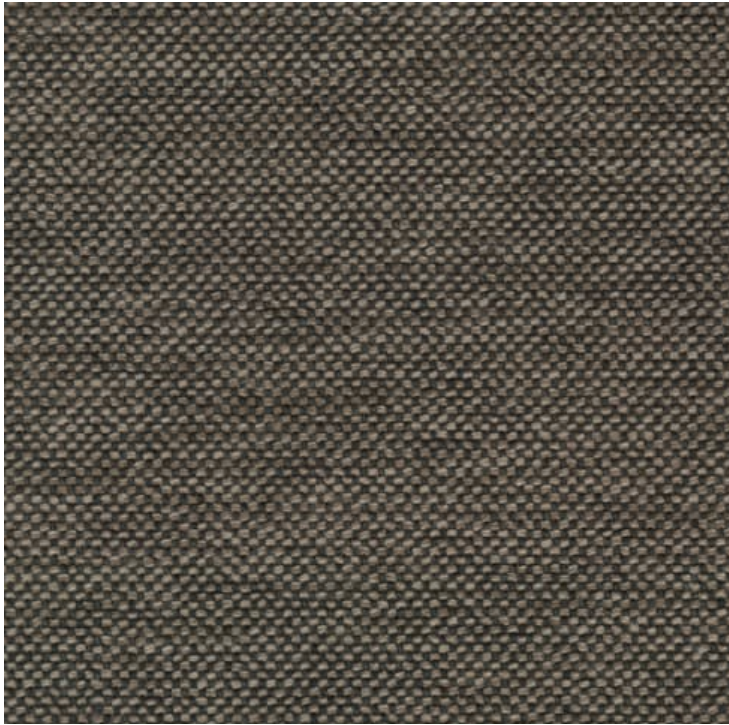
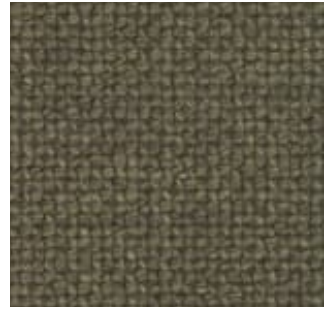


Clay

**SAHCO**



008



017



015



014



010



016



011



007





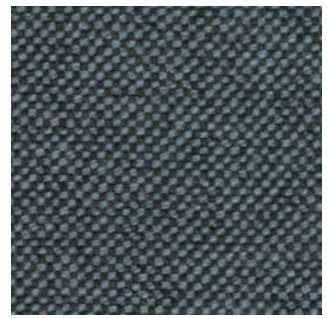
005



002



006



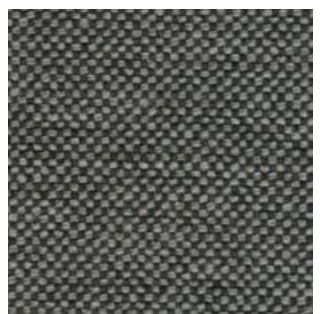
001



004



009



013



003



012

## Clay

## DK

**Anvendelse** Polstring

**Beskrivelse** 76% hør, 21% bomuld, 3% polyester.  
 Bredde 140 cm / 55 in. Vægt 768 g/lbm **Testning**  
 Lysægted 5 (ISO 1-8). Pilling 4 (ISO 1-5).  
 Slidstyrke: 45.000 Martindale. Krypning ca.  
 2%. Flammesikring BS 5852 Crib 5 med  
 behandling. BS 5852 part 1.  
 EN 1021-1/2  
**Vedligeholdelse** Se ISO symboler

## UK/US

**Application** Upholstery

**Description** 76% Linen, 21% Cotton, 3%  
 Polyester. Width 140 cm / 55 in. Weight 768  
 g/lm 32 oz/sq **Tests** Lightfastness 5 (ISO 1-8).  
 Pilling 4  
 (ISO 1-5). Durability 45.000 Martindale.  
 Shrinkage ca. 2%. Flame resistance BS 5852 Crib  
 5 with treatment. BS 5852 part 1.  
 EN 1021-1/2  
**Care** Please see the ISO symbols

## DE

**Anwendungsbereich** Bezugsstoff

**Beschreibung** 76% Leinen, 21% Baumwolle, 3%  
 Polyester. Breite 140 cm / 55 in. Gewicht 768  
 g/lfd. Meter **Testergebnisse** Lichtechtheit 5  
 (ISO 1-8). Pilling 4 (ISO 1-5). Scheuertouren  
 50.000 Martindale. Einlaufquote ca. 2%.  
 Flammschutz BS 5852 Crib 5 mit Behandlung.  
 BS 5852 part 1. EN 1021-1/2  
**Pflege** Siehe ISO Pflegesymbole

## NL

**Toepassing** Bekleding stof

**Omschrijving** 76% linnen, 21% katoen, 3%  
 polyester. Hoogte 140 cm / 55 in. Gewicht 768  
 gr/str.m **Testgegevens** Lichtechtheid 5 (ISO 1-8).  
 Pilling 4 (ISO 1-5). Durability 45.000  
 Martindale. Washbelading ca. 2%.  
 Vlamvertragendheid BS 5852 Crib 5 met  
 behandeling. BS 5852 part 1. EN 1021-1/2  
**Onderhoud** Zie de ISO symbolen

## FR

**Domaine d'utilisation** Tissu d'ameublement

**Description** 76% lin, 21% coton,  
 3% polyester. Largeur 140 cm / 55 in.  
 Poids 768 g/ml  
**Tests** Résistance à la lumière 5 (ISO 1-8).  
 Résistance au frottement 4 (ISO 1-5). Résistance  
 à l'abrasion 45.000 Martindale. Rétrécissement  
 env. 2%. Normes au feu  
 BS 5852 Crib 5 avec traitement. BS 5852 part 1.  
 EN 1021-1/2  
**Entretien** Voir les symboles ISO

## IT

**Destinazione d'uso** Tessuti per tappezzeria

**Caratteristiche**, 76% lino, 21% cotone, 3%  
 poliestere. Larghezza 140 cm / 55 in.  
 Peso 768 gr/ml  
**Test** Resistenza alla luce 5 (ISO 1-8). Pilling 4  
 (ISO 1-5). Abrasione 45.000 Martindale.  
 Restringimento circa 2%. Ignifugazione BS 5852  
 Crib 5 con il trattamento. BS 5852 part 1.  
 EN 1021-1/2  
**Manutenzione** Per favore seguire simboli ISO

## ES

**Aplicación** Tapicería

**Descripción** 76% lino, 21% algodón, 3%  
 poliéster. Anchura 140 cm / 55 in.  
 Peso 768 gr/ml  
**Pruebas** Resistencia a la luz 5 (ISO 1-8). Relleno  
 4 (ISO 1-5). Resistencia al desgaste 45.000  
 Martindale. Encogimiento aprox. 2%.  
 Resistencia al fuego BS 5852 Crib 5 con  
 tratamiento. BS 5852 part 1. EN 1021-1/2  
**Mantenimiento** Consulte los símbolos ISO

## JP

**用途** 室内装飾用テキスタイル

**組成** 綿 21%, 耐 76%, ポリエステル 3%.

幅 140 cm / 55 インチ. 重さ 768 g/lin.m

**テスト** 耐光性 5 (ISO 1-8). ピリング

4 (ISO 1-5). 耐久性 マーチンデール値 - 45,000.

収縮 約 2%. 難燃性 BS 5852 part 1, EN 1021-1/2

**ケア** 詳細は、ISO 認証をご覧ください

## CN

**应用** 软装面料

**成分** 21%棉, 76%亚麻, 3%涤纶. 幅宽 140 cm / 55

in. 克重

768 g/lin.m

**耐磨指数** 耐光性 5 (ISO 1-8). 抗起球度

4 (ISO 1-5). 耐久度 45,000 次马丁代尔摩擦实验

(Martindale). 缩水率 大约 2%. 阻燃 BS 5852 part

1, EN 1021-1/2

**维护** 请参阅ISO符号



Contact and further information [www.sahco.com](http://www.sahco.com)

Quality and environmental system accreditation according to ISO 9001 and ISO 14001

Encouraging the use of suitable fibres. Durable and high quality. Hazardous substances restricted.