

Shell reversible

SAHCO

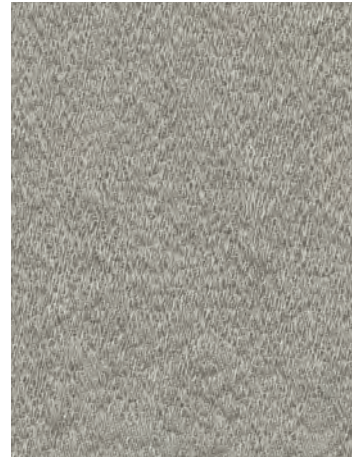




001



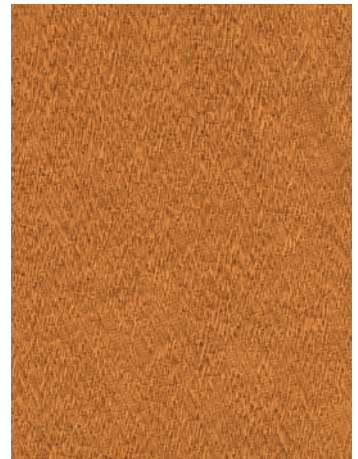
002



003



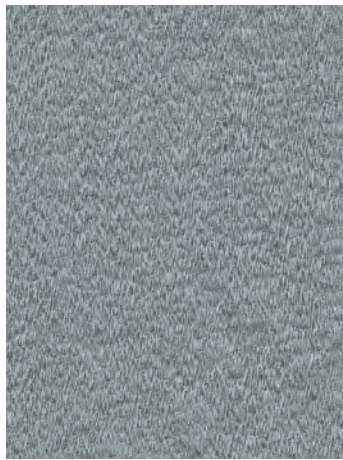
007



006



008



004



005

Shell reversible

DK

Anvendelse Gardiner

Beskrivelse 35% cupro, 33% hør, 32% bomuld.

Bredde 310 cm / 122 in. Repeat 62 cm / 24 in.

Vægt 850 g/lbm

Testning Lysægted 3-5 (ISO 1-8).

Krympning ca. 1%

Vedligeholdelse Se ISO symboler

UK/US

Application Drapery

Description 35% cupro, 33% linen, 32% cotton.

Width 310 cm / 122 in. Repeat 62 cm / 24 in.

Weight 850 g/lm / 30 oz/sq

Tests Lightfastness 3-5 (ISO 1-8).

Shrinkage app. 1%

Care Please see the ISO symbols

DE

Anwendungsbereich Dekorationsstoff

Beschreibung 35% Cupro, 33% Leinen,

32% Baumwolle. Breite 310 cm / 122 in.

Rapport 62 cm / 24 in. Gewicht 850 g/lfd. Meter

Testergebnisse Lichtechtheit 3-5 (ISO 1-8).

Einlaufquote ca. 1%.

Pflege Siehe ISO Pflegesymbole

NL

Toepassing Gordijnen

Omschrijving 35% cupro, 33% linnen,

32% katoen. Hoogte 310 cm / 122 in.

Rapport 62 cm / 24 in. Gewicht 850 gr/str.m

Testgegevens Lichtechtheid 3-5 (ISO 1-8).

Washbelading ca. 1%.

Onderhoud Zie de ISO symbolen

FR

Domaine d'utilisation Tenture

Description 35% cupro, 33% lin, 32% coton.

Largeur 310 cm / 122 in. Répétition 62 cm / 24 in.

Poids 850 g/ml

Tests Résistance à la lumière 3-5 (ISO 1-8).

Rétrécissement env. 1%

Entretien Voir les symboles ISO

IT

Destinazione d'uso Tessuti per arredamento

Caratteristiche 35% cupro, 33% lino, 32% cotone.

Larghezza 310 cm / 122 in.

Ripetizione 62 cm / 24 in. Peso 850 gr/ml

Test Resistenza alla luce 3-5 (ISO 1-8).

Restringimento circa 1%

Manutenzione Per favore seguire simboli ISO

ES

Aplicación Cortinas

Descripción 35% cupro, 33% lino, 32% algodón.

Anchura 310 cm / 122 in. Dibujo 62 cm / 24 in.

Peso 850 gr/ml

Pruebas Resistencia a la luz 3-5 (ISO 1-8).

Encogimiento aprox. 1%

Mantenimiento Consulte los símbolos ISO

JP

应用 カーテンテキスタイル

組成 キュプラ 35%、麻 33%、コットン 32%。

幅 310 cm / 122 インチ。リピート 62 cm / 24 インチ。

重さ 850 g/lin.m

耐光性 3-5 (ISO 1-8)。収縮 約 1%

ケア 詳細は、ISO 認証をご覧ください

CN

应用 布幔

成分 35% 铜氨纤维, 33% 亚麻, 32% 棉。

幅宽 310 cm / 122 in. Repeat 62 cm / 24 in.

克重 850 g/lin.m

光照色牢度 3-5 (ISO 1-8)。缩水率 大约 1%

维护 请参阅ISO符号



Contact and further information www.sahco.com

Quality and environmental system accreditation according to ISO 9001 and ISO 14001

Encouraging the use of suitable fibres. Durable and high quality. Hazardous substances restricted.