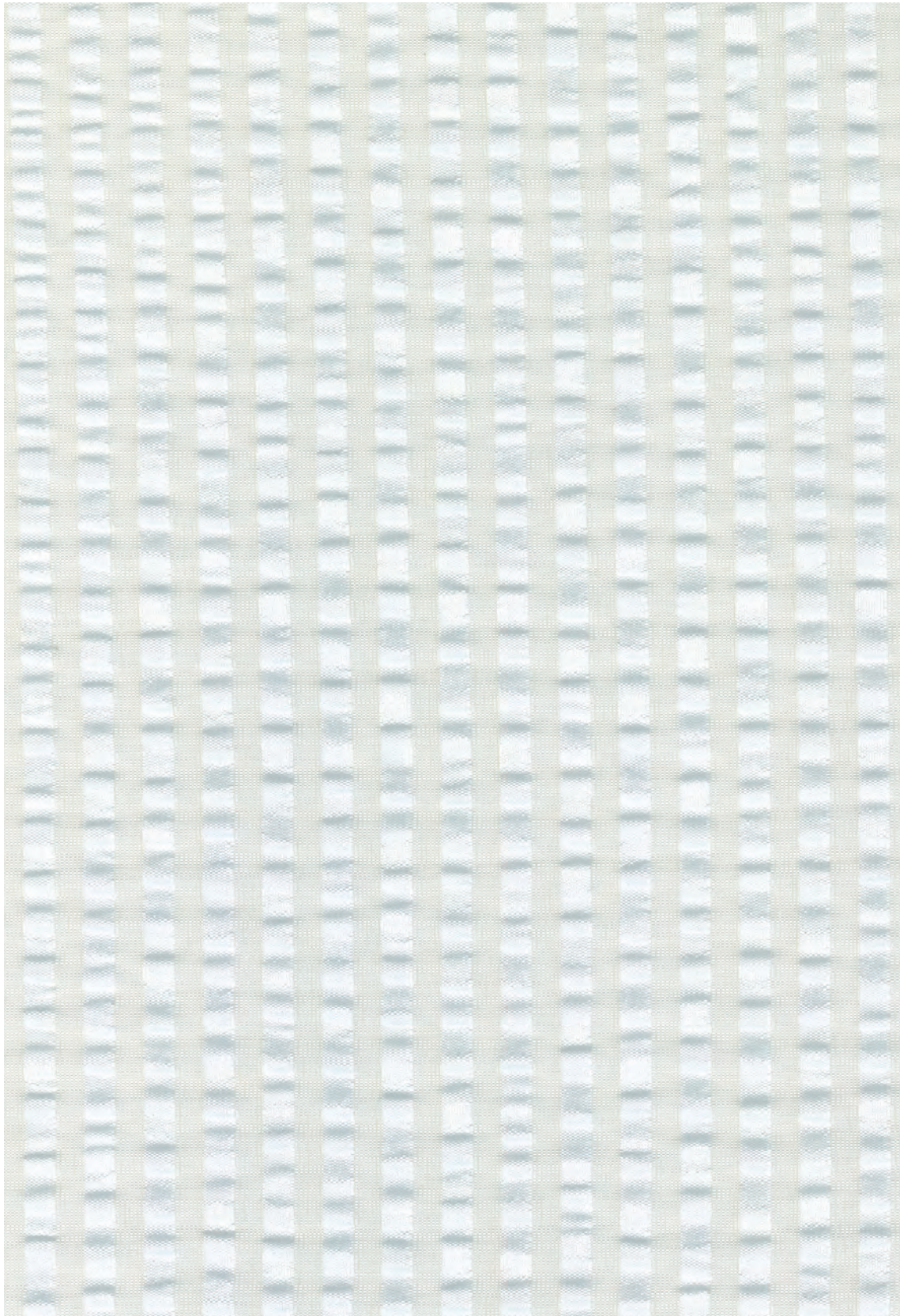


Seersucker

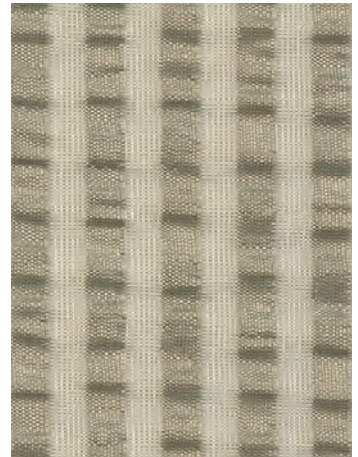
SAHCO







001



003



002



012



005



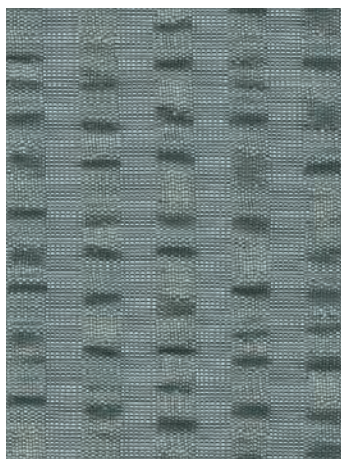
004



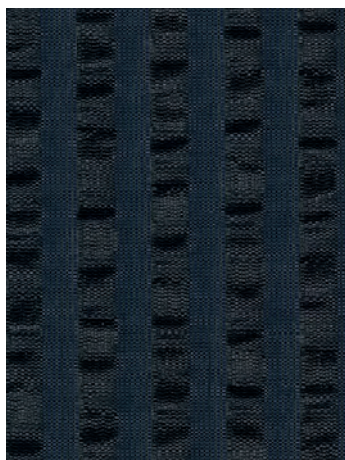
008



006



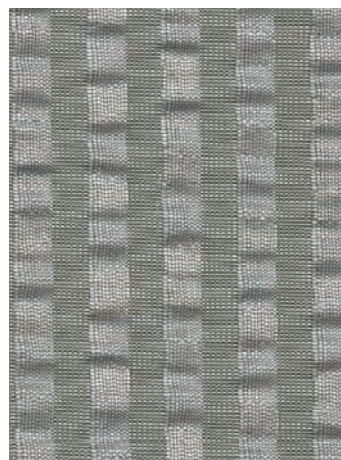
007



011



010



009



## Seersucker

## DK

## Anvendelse Gardiner

**Beskrivelse** 95% trevira CS, 5% polyester FR.

Bredde 310 cm / 122 in. Repeat 1 cm / 0,5 in.

Vægt 300 g/lbm

**Testning** Lysæghed 5-6 (ISO 1-8).

Krympning ca. 1%. Flammesikring DIN 4102 B1,

NF P 92 507 M1, EN 13 773 class 1

**Vedligeholdelse** Se ISO symboler

## NL

## Toepassing Gordijnen

**Omschrijving** 95% trevira CS, 5% polyester.

Hoogte 310 cm / 122 in. Rapport 1 cm / 0,5 in.

Gewicht 300 gr/str.m

**Testgegevens** Lichtechtheid 5-6 (ISO 1-8).

Washbelading ca. 1%. Vlamvertragendheid

DIN 4102 B1, NF P 92 507 M1, EN 13 773 class 1

**Onderhoud** Zie de ISO symbolen

## ES

## Aplicación Cortinas

**Descripción** 95% trevira CS, 5% poliéster FR.

Anchura 310 cm / 122 in. Dibujo 1 cm / 0,5 in.

Peso 300 gr/ml

**Pruebas** Resistencia a la luz 5-6 (ISO 1-8).

Encogimiento aprox. 1%. Llenaje de lavado

DIN 4102 B1, NF P 92 507 M1, EN 13 773 class 1

**Mantenimiento** Consulte los símbolos ISO

## UK/US

## Application Drapery

**Description** 95% trevira CS, 5% polyester.

Width 310 cm / 122 in. Repeat 1 cm / 0,5 in.

Weight 300 g/lm / 11 oz/sq

**Tests** Lightfastness 5-6 (ISO 1-8). Shrinkage

app. 1%. Flame resistance DIN 4102 B1,

NF P 92 507 M1, EN 13 773 class 1

**Care** Please see the ISO symbols

## FR

## Domaine d'utilisation Tenture

**Description** 95% trevira CS, 5% polyester.

Largeur 310 cm / 122 in. Répétition 1 cm / 0,5 in.

Poids 300 g/ml

**Tests** Résistance à la lumière 5-6 (ISO 1-8).

Rétrécissement env. 1%. Normes au feu

DIN 4102 B1, NF P 92 507 M1, EN 13 773 class 1

**Entretien** Voir les symboles ISO

## JP

## 应用 カーテンテキスタイル

**組成** トレビラ CS 95%, ポリエステル 5%.

幅 310 cm / 122 インチ. リピート 1 cm / 0.5 インチ.

重さ 300 g/lin.m

**耐光性** 5-6 (ISO 1-8). 収縮 約 1%. 難燃性

DIN 4102 B1, NF P 92 507 M1, EN 13 773 class 1

**ケア** 詳細は、ISO 認証をご覧ください

## DE

## Anwendungsbereich Dekorationsstoff

**Beschreibung** 95% Trevira CS, 5% Polyester.

Breite 310 cm / 122 in. Rapport 1 cm / 0,5 in.

Gewicht 300 g/lfd. Meter

**Testergebnisse** Lichtechtheit 5-6 (ISO 1-8).

Einlaufquote ca. 1%. Flammenschutz DIN 4102 B1,

NF P 92 507 M1, EN 13 773 class 1

**Pflege** Siehe ISO Pflegesymbole

## IT

## Destinazione d'uso Tessuti per arredamento

**Caratteristiche** 95% trevira CS, 5% poliestere.

Larghezza 310 cm / 122 in. Ripetizione

1 cm / 0,5 in. Peso 300 gr/mtl

**Test** Resistenza alla luce 5-6 (ISO 1-8).

Restringimento circa 1%. Ignifugazione

DIN 4102 B1, NF P 92 507 M1, EN 13 773 class 1

**Manutenzione** Per favore seguire simboli ISO

## CN

## 应用 布幔

**成分** 95% 特雷维拉 CS, 5% 涤纶.

幅宽 310 cm / 122 in. Repeat 1 cm / 0.5 in.

克重 300 g/lin.m

**光照色牢度** 5-6 (ISO 1-8). 缩水率 大约 1%. 阻燃

DIN 4102 B1, NF P 92 507 M1, EN 13 773 1 级

**维护** 请参阅ISO符号



Contact and further information [www.sahco.com](http://www.sahco.com)

Quality and environmental system accreditation according to ISO 9001 and ISO 14001

Encouraging the use of suitable fibres. Durable and high quality. Hazardous substances restricted.