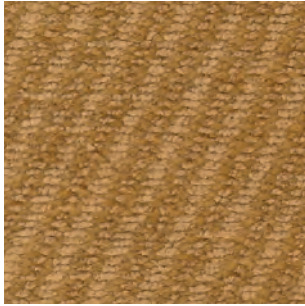
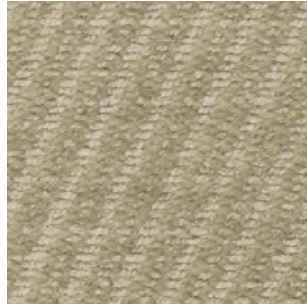


Nabis

SAHCO



015



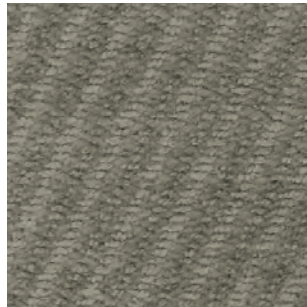
003



004



016



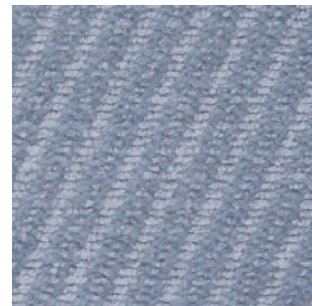
018



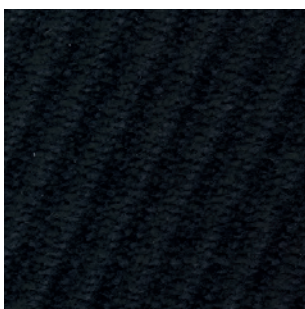
019



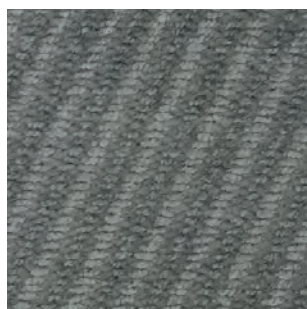
017



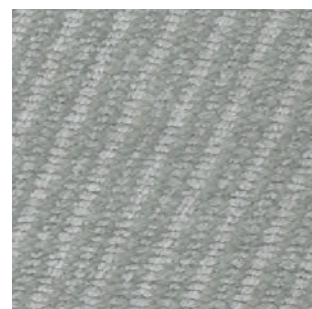
014



007



006



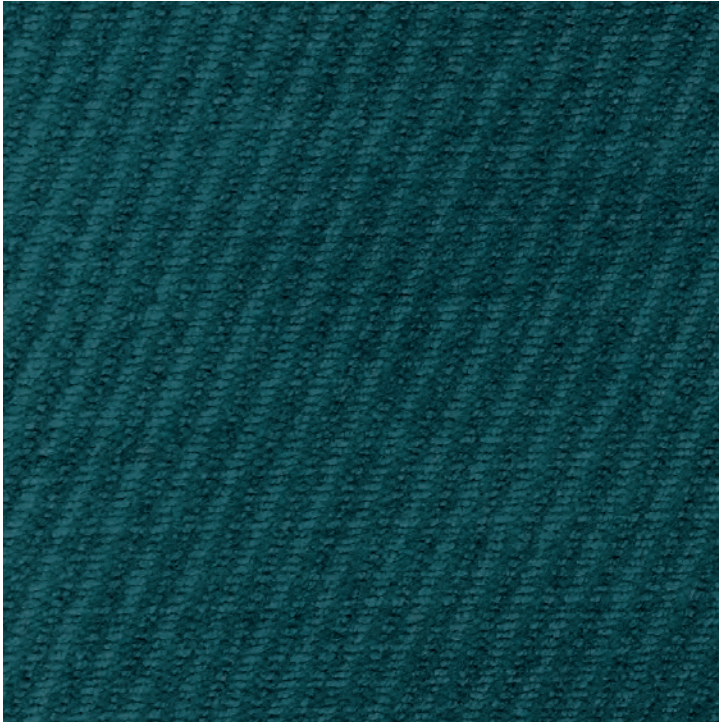
005



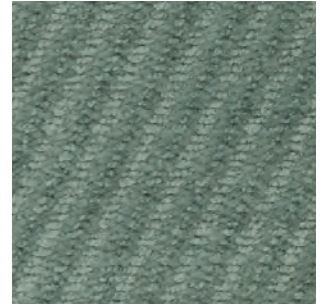
002



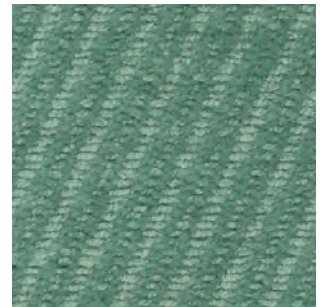
001



020



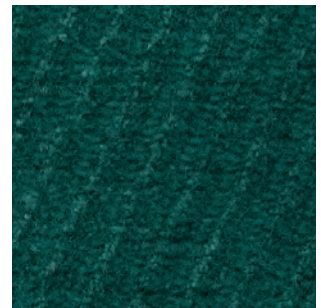
023



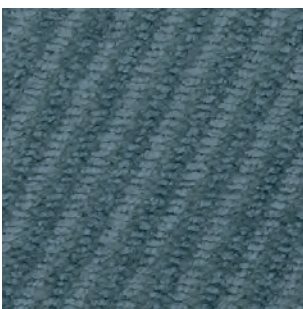
022



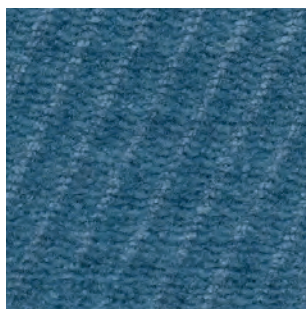
008



021



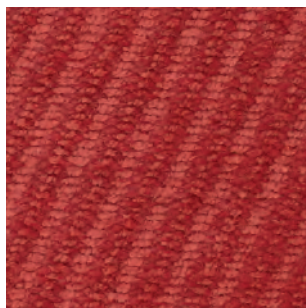
009



010



013



012



011

Nabis

DK

Anvendelse Polstring

Beskrivelse 48% bomuld, 30% viscose, 22% polyester. Bredde 140 cm / 55 in. Vægt 890 g/lbm

Testning Lysægted 4-6 (ISO 1-8). Pilling 5 (ISO 1-5). Slidstyrke: 40.000 Martindale. Krympning ca. 1%. Flammesikring BS 5852 Crib 5 med behandling. EN 1021-1/2
Vedligeholdelse Se ISO symboler

UK/US

Application Upholstery

Description 48% Cotton, 30% Viscose, 22% Polyester. Width 140 cm / 55 in. Weight 890 g/lm 31 oz/sq

Tests Lightfastness 4-6 (ISO 1-8). Pilling 5 (ISO 1-5). Durability 40.000 Martindale. Shrinkage ca. 1%. Flame resistance BS 5852 Crib 5 with treatment. EN 1021-1/2
Care Please see the ISO symbols

DE

Anwendungsbereich Bezugsstoff

Beschreibung 48% Baumwolle, 30% Viskose, 22% Polyester. Breite 140 cm / 55 in. Gewicht 890 g/lfd. Meter

Testergebnisse Lichtechtheit 4-6 (ISO 1-8). Pilling 5 (ISO 1-5). Scheuertouren 40.000 Martindale. Einlaufquote ca. 1%. Flammenschutz BS 5852 Crib 5 mit Behandlung. EN 1021-1/2
Pflege Siehe ISO Pflegesymbole

NL

Toepassing Bekleding stof

Omschrijving 48% katoen, 30% viscose, 22% polyester. Hoogte 140 cm / 55 in. Gewicht 890 gr/str.m

Testgegevens Lichtechtheid 4-6 (ISO 1-8). Pilling 5 (ISO 1-5). Durability 40.000 Martindale. Washbelading ca. 1%. Vlamvertragendheid BS 5852 Crib 5 met behandeling. EN 1021-1/2
Onderhoud Zie de ISO symbolen

FR

Domaine d'utilisation Tissu d'ameublement

Description 48% coton, 30% viscose, 22% polyester. Largeur 140 cm / 55 in. Poids 890 g/ml

Tests Résistance à la lumière 4-6 (ISO 1-8). Résistance au frottement 5 (ISO 1-5). Résistance à l'abrasion 40.000 Martindale. Rétrécissement env. 1%. Normes au feu BS 5852 Crib 5 avec traitement. EN 1021-1/2
Entretien Voir les symboles ISO

IT

Destinazione d'uso Tessuti per tappezzeria

Caratteristiche 48% cotone, 30% viscosa, 22% poliestere. Larghezza 140 cm / 55 in. Peso 890 gr/ml

Test Resistenza alla luce 4-6 (ISO 1-8). Pilling 5 (ISO 1-5). Abrasione 40.000 Martindale. Restringimento circa 1%. Ignifugazione BS 5852 Crib 5 con il trattamento. EN 1021-1/2
Manutenzione Per favore seguire simboli ISO

ES

Aplicación Tapicería

Descripción 48% algodón, 30% viscosa, 22% poliéster. Anchura 140 cm / 55 in. Peso 890 gr/ml

Pruebas Resistencia a la luz 4-6 (ISO 1-8). Relleno 5 (ISO 1-5). Resistencia al desgaste 40.000 Martindale. Encogimiento aprox. 1%. Resistencia al fuego BS 5852 Crib 5 con tratamiento. EN 1021-1/2
Mantenimiento Consulte los símbolos ISO

JP

用途 室内装飾用テキスタイル

組成 綿 48%, ビスコース 30%, ポリエステル 22%. 幅 140 cm / 55 インチ. 重さ 890 g/lin.m
テスト 耐光性 4-6 (ISO 1-8). ピリング 5 (ISO 1-5). 耐久性 マーチンデール値 - 40,000. 収縮 約 1%. 難燃性 EN 1021-1/2
ケア 詳細は、ISO 認証をご覧ください

CN

应用 软装面料

成分 48%棉, 30%粘胶纤维, 22%涤纶. 幅宽 140 cm / 55 in 克重 890 g/lin.m
耐磨指数 耐光性 4-6 (ISO 1-8). 抗起球度 5 (ISO 1-5). 耐久度 40,000次马丁代尔摩擦实验 (Martindale). 缩水率大约 1%. 阻燃 EN 1021-1/2
维护 请参阅ISO符号



Contact and further information www.sahco.com

Quality and environmental system accreditation according to ISO 9001 and ISO 14001

Encouraging the use of suitable fibres. Durable and high quality. Hazardous substances restricted.