

Fez

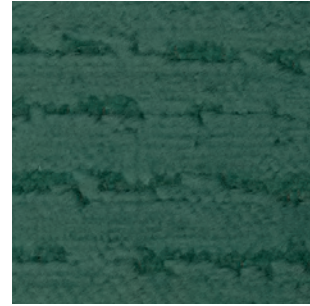
SAHCO



004



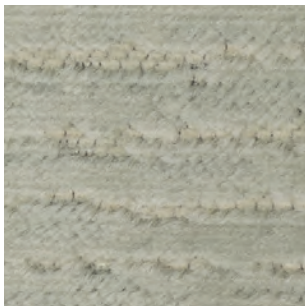
005



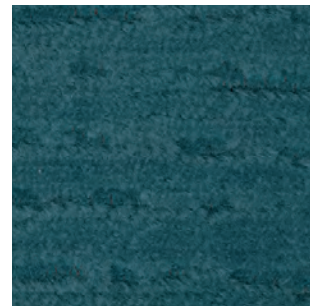
009



011



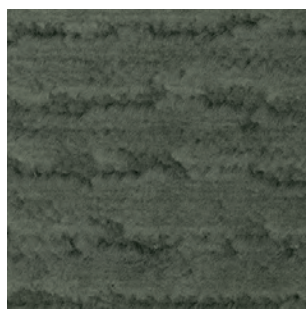
010



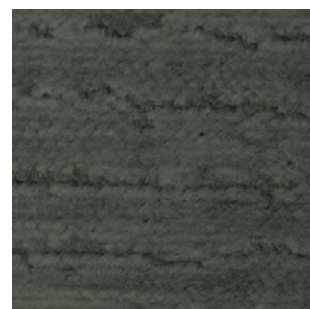
013



007



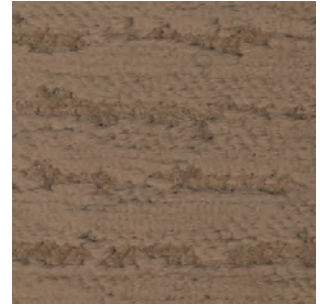
006



008



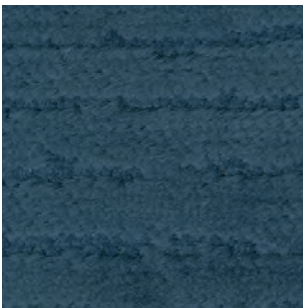
015



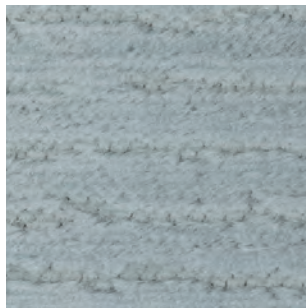
003



002



014



016



001



012

Fez Vincent Van Duysen

DK

Anvendelse Polstring

Beskrivelse 83% bomuld, 15% polyester,

2% viscose. Bredde 140 cm / 55 in.

Vægt 580 g/lbm

Testning Lysægted 5-6 (ISO 1-8). Pilling 5

(ISO 1-5). Slidstyrke: 60.000 Martindale.

Krympning ca. 2%. Flammesikring BS 5852

Crib 5 med behandling. BS 5852 part 1, ig. s. o.

EN 1021-1

Vedligeholdelse Se ISO symboler

UK/US

Application Upholstery

Description Cotton, 15% Polyester,

2% Viscose. Width 140 cm / 55 in.

Weight 580 g/lm 20 oz/sq

Tests Lightfastness 5-6 (ISO 1-8). Pilling 5

(ISO 1-5). Durability 60.000 Martindale.

Shrinkage ca. 2%. Flame resistance BS 5852

Crib 5 with treatment. BS 5852 part 1,

ig. s. o. EN 1021-1

Care Please see the ISO symbols

DE

Anwendungsbereich Bezugsstoff

Beschreibung 83% Baumwolle, 15% Polyester,

2% Viskose. Breite 140 cm / 55 in.

Gewicht 580 g/lfd. Meter

Testergebnisse Lichtechtheit 5-6 (ISO 1-8).

Pilling 5 (ISO 1-5). Scheuertouren 60.000

Martindale. Einlaufquote ca. 2%. Flammenschutz

BS 5852 Crib 5 mit Behandlung. BS 5852 part 1,

ig. s. o. EN 1021-1

Pflege Siehe ISO Pflegesymbole

NL

Toepassing Bekleding stof

Omschrijving 83% katoen, 15% polyester,

2% viscose. Hoogte 140 cm / 55 in.

Gewicht 580 gr/str.m

Testgegevens Lichtechtheid 5-6 (ISO 1-8).

Pilling 5 (ISO 1-5). Durability 60.000 Martindale.

Washbelading ca. 2%. Vlamvertragendheid BS

5852 Crib 5 met behandeling. BS 5852 part 1, ig. s.

o. EN 1021-1

Onderhoud Zie de ISO symbolen

FR

Domaine d'utilisation Tissu d'ameublement

Description 83% coton, 15% polyester,

2% viscose. Largeur 140 cm / 55 in. Poids 580 g/ml

Tests Résistance à la lumière 5-6 (ISO 1-8).

Résistance au frottement 5 (ISO 1-5). Résistance

à l'abrasion 60.000 Martindale. Rétrécissement

env. 2%. Normes au feu BS 5852 Crib 5 avec

traitement. BS 5852 part 1, ig. s. o. EN 1021-1

Entretien Voir les symboles ISO

IT

Destinazione d'uso Tessuti per tappezzeria

Caratteristiche 83% cotone, 15% poliestere,

2% viscosa. Larghezza 140 cm / 55 in.

Peso 580 gr/ml

Test Resistenza alla luce 5-6 (ISO 1-8). Pilling 5

(ISO 1-5). Abrasione 60.000 Martindale.

Restringimento circa 2%. Ignifugazione BS 5852

Crib 5 con il trattamento. BS 5852 part 1,

ig. s. o. EN 1021-1

Manutenzione Per favore seguire simboli ISO

ES

Aplicación Tapicería

Descripción 83% algodón, 15% poliéster,

2% viscosa. Anchura 140 cm / 55 in.

Peso 580 gr/ml

Pruebas Resistencia a la luz 5-6 (ISO 1-8).

Relleno 5 (ISO 1-5). Resistencia al desgaste

60.000 Martindale. Encogimiento aprox. 2%.

Resistencia al fuego BS 5852 Crib 5 con

tratamiento. BS 5852 part 1, ig. s. o. EN 1021-1

Mantenimiento Consulte los símbolos ISO

JP

用途 室内装飾用テキスタイル

組成 綿 83%、ポリエステル 15%、ビスコース 2%。

幅 140 cm / 55 インチ。重さ 580 g/lin.m

テスト 耐光性 5-6 (ISO 1-8)。ピリング

5 (ISO 1-5)。耐久性 マーチンデール値 - 60,000。

収縮 約 2%。

ケア 詳細は、ISO認証をご覧ください

CN

应用 软装面料

成分 83%棉, 15%涤纶, 2%粘胶纤维

幅宽 140 cm / 55 in 克重 580 g/lin.m

耐磨指数 耐光性 5-6 (ISO 1-8)。抗起球度

5 (ISO 1-5)。耐久度60,000次马丁代尔摩擦实验

(Martindale)。缩水率 大约 2%

维护 请参阅ISO符号

