

Moiré

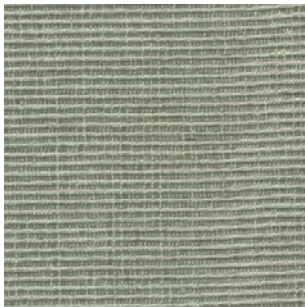
SAHCO



001



003



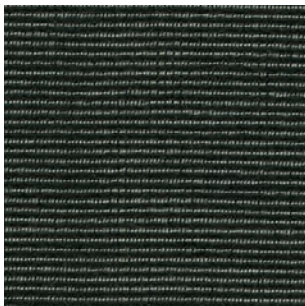
008



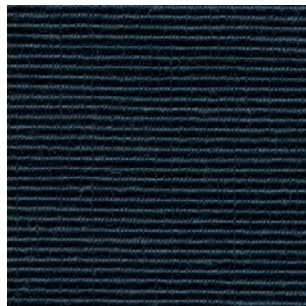
004



013



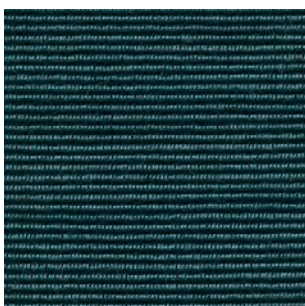
009



005



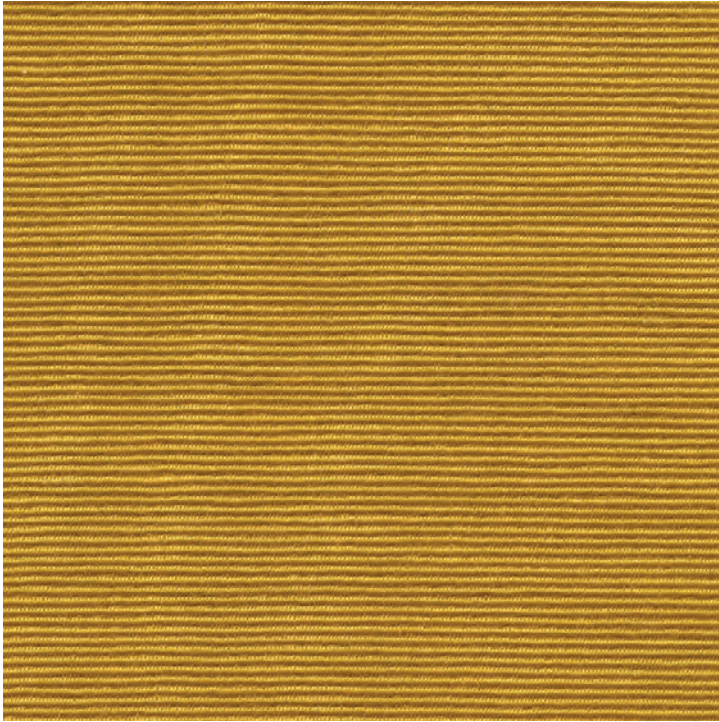
006



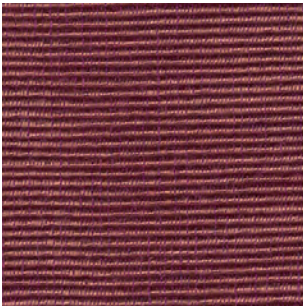
010



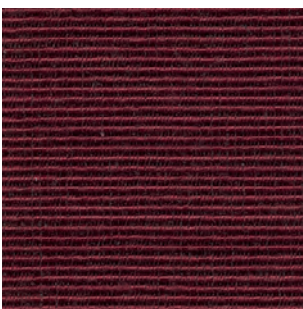
007



014



012



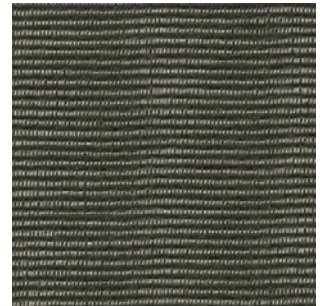
011



002



016



017



015

Moiré

Vincent Van Duysen

DK**Anvendelse** Polstring

Beskrivelse 34% bomuld, 24% acryl, 23% polyamid, 7% polyester, 7% uld, 5% andre fibres. Bredde 140 cm / 55 in.

Vægt 450 g/lbm

Testning Lysægthed 4-6 (ISO 1-8). Pilling 3-4 (ISO 1-5). Slidstyrke: 100.000 Martindale.

Krympning ca. 2%. Flammesikring BS 5852

Crib 5 med behandling. BS 5852 part 1, ig. s. o. EN 1021-1

Vedligeholdelse Se ISO symboler

UK/US**Application** Upholstery

Description 34% Cotton, 24% Acrylic, 23% Nylon, 7% Polyester, 7% New Wool, 5% other fibres. Width 140 cm / 55 in.

Weight 450 g/lm 16 oz/sq

Tests Lightfastness 4-6 (ISO 1-8). Pilling 3-4 (ISO 1-5). Durability 100.000 Martindale.

Shrinkage ca. 2%. Flame resistance BS 5852

Crib 5 with treatment. BS 5852 part 1, ig. s. o. EN 1021-1

Care Please see the ISO symbols

DE**Anwendungsbereich** Bezugsstoff

Beschreibung 34% Baumwolle, 24% Acryl, 23% Nylon, 7% Polyester, 7% Wolle, 5% andere Fasern. Breite 140 cm / 55 in.

Gewicht 450 g/lfd. Meter

Testergebnisse Lichtechtheit 4-6 (ISO 1-8).

Pilling 3-4 (ISO 1-5). Scheuertouren 100.000 Martindale. Einlaufquote ca. 2%. Flammenschutz

BS 5852 Crib 5 mit Behandlung. BS 5852 part 1, ig. s. o. EN 1021-1

Pflege Siehe ISO Pflegesymbole

NL**Toepassing** Bekleding stof

Omschrijving 34% katoen, 24% acryl, 23% polyamide, 7% polyester, 7% wol, 5% andere vezels. Hoogte 140 cm / 55 in.

Gewicht 450 gr/str.m

Testgegevens Lichtechtheid 4-6 (ISO 1-8).

Pilling

3-4 (ISO 1-5). Durability 100.000 Martindale.

Washbelading ca. 2%. Vlamvertragendheid

BS 5852 Crib 5 met behandeling. BS 5852 part 1, ig. s. o. EN 1021-1

Onderhoud Zie de ISO symbolen

FR**Domaine d'utilisation** Tissu d'ameublement

Description 34% coton, 24% polyacrylique, 23% polyamide, 7% polyester, 7% laine, 5% autres.

Largeur 140 cm / 55 in. Poids 450 g/ml

Tests Résistance à la lumière 4-6 (ISO 1-8).

Résistance au frottement 3-4 (ISO 1-5).

Résistance

à l'abrasion 100.000 Martindale. Rétrécissement

env. 2%. Normes au feu BS 5852 Crib 5 avec

traitement. BS 5852 part 1, ig. s. o. EN 1021-1

Entretien Voir les symboles ISO

IT**Destinazione d'uso** Tessuti per tappezzeria

Caratteristiche 34% cotone, 24% acrilico, 23% poliammide, 7% poliestere, 7% lana, 5% altri.

Larghezza 140 cm / 55 in. Peso 450 gr/mtl

Test Resistenza alla luce 4-6 (ISO 1-8). Pilling

3-4 (ISO 1-5). Abrasione 100.000 Martindale.

Restringimento circa 2%. Ignifugazione

BS 5852 Crib 5 con il trattamento. BS 5852 part 1, ig. s. o. EN 1021-1

Manutenzione Per favore seguire simboli ISO

ES**Aplicación** Tapicería

Descripción 34% algodón, 24% poliácridica, 23% poliamida, 7% poliéster, 7% lana, 5% otras fibras. Anchura 140 cm / 55 in.

Peso 450 gr/ml

Pruebas Resistencia a la luz 4-6 (ISO 1-8).

Relleno 3-4 (ISO 1-5). Resistencia al desgaste

100.000 Martindale. Encogimiento aprox. 2%.

Resistencia al fuego BS 5852 Crib 5 con tratamiento. BS 5852 part 1, ig. s. o. EN 1021-1

Mantenimiento Consulte los símbolos ISO

JP**用途** 室内装飾用テキスタイル、

組成 綿 34%、アクリル 24%、ナイロン 23%、ポリエステル 7%、ニューウール 7%、その他繊維 5%。

幅 140 cm / 55 インチ。重さ 450 g/lin.m

テスト 耐光性 4-6 (ISO 1-8)。ピリング

3-4 (ISO 1-5)。耐久性 マーチンデール値 -

100,000。収縮 約 2%

ケア 詳細は、ISO 認証をご覧ください

CN**应用** 软装面料

成分 34%棉, 24%腈纶, 23%锦纶, 7%涤纶, 7%羊毛, 5%其他纤维。幅宽 140 cm / 55 in 克重 450 g/lin.m

耐磨指数 耐光性 4-6 (ISO 1-8)。抗起球度 3-4

(ISO 1-5)。耐久度 100,000 次马丁代尔摩擦实验 (Martindale)。缩水率 大约 2%

维护 请参阅ISO符号



Contact and further information www.sahco.com

Quality and environmental system accreditation according to ISO 9001 and ISO 14001

Encouraging the use of suitable fibres. Durable and high quality. Hazardous substances restricted.