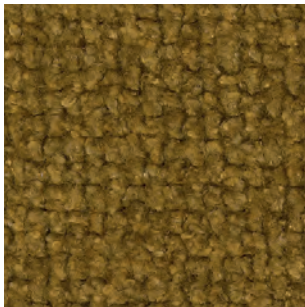


Nara

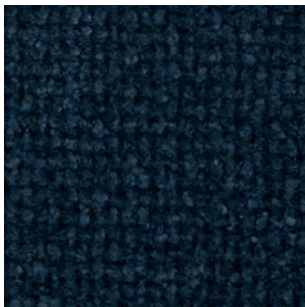
SAHCO



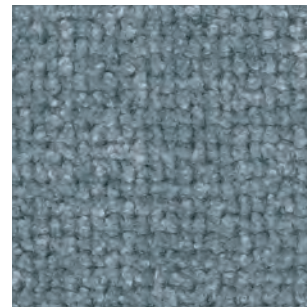
012



008



009



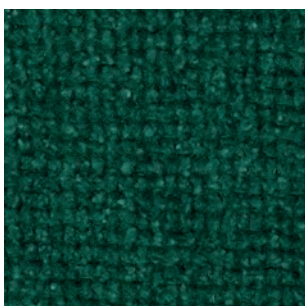
010



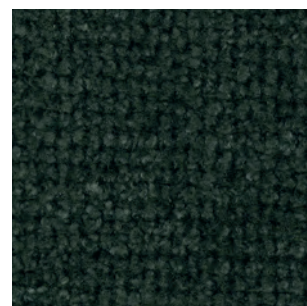
015



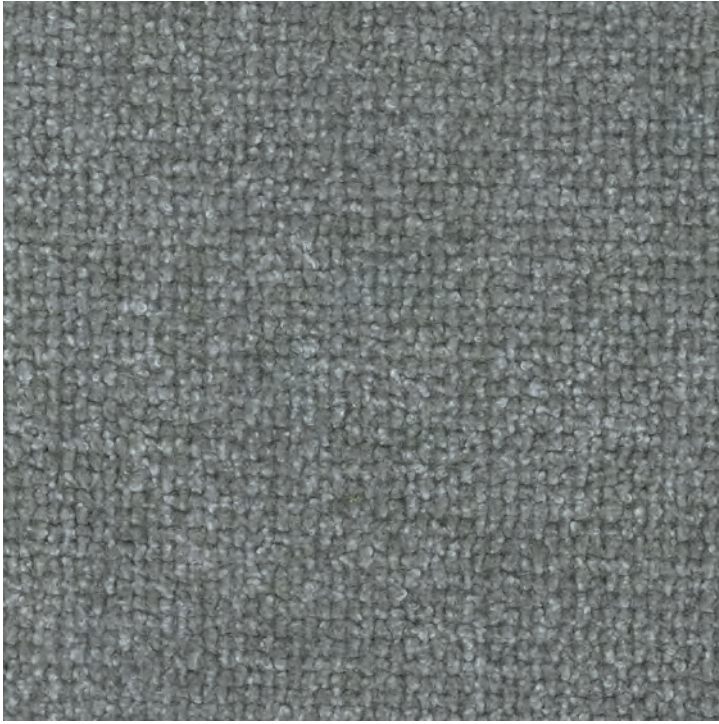
005



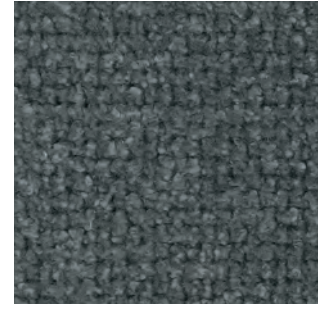
013



014



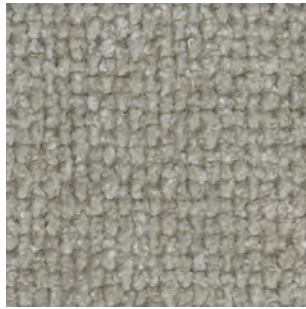
001



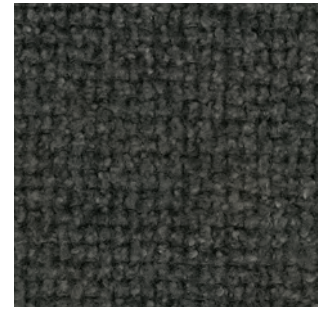
002



006



007



003



016



011



004

Nara

DK

Anvendelse Polstring

Beskrivelse 50% hør, 35% bomuld, 15% viscose.

Bredde 140 cm / 55 in. Vægt 1010 g/lbm

Testning Lysægted 5-6 (ISO 1-8). Pilling 5

(ISO 1-5). Slidstyrke: 60.000 Martindale.

Krympning ca. 1%. Flammesikring BS 5852 Crib

5 med behandling. BS 5852 part 1. EN 1021-1/2

Vedligeholdelse Se ISO symboler

UK

Application Upholstery

Description 50% Linen, 35% Cotton,

15% Viscose. Width 140 cm / 55 in.

Weight 1010 g/lm 36 oz/sq

Tests Lightfastness 5-6 (ISO 1-8). Pilling 5

(ISO 1-5). Durability 60.000 Martindale.

Shrinkage ca. 1%. Flame resistance BS 5852

Crib 5 with treatment. BS 5852 part 1.

EN 1021-1/2

Care Please see the ISO symbols

DE

Anwendungsbereich Bezugsstoff

Beschreibung 50% Leinen, 35% Baumwolle,

15% Viskose. Breite 140 cm / 55 in.

Gewicht 1.010 g/lfd. Meter

Testergebnisse Lichtechtheit 5-6 (ISO 1-8).

Pilling 5 (ISO 1-5). Scheuertouren 60.000

Martindale. Einlaufquote ca. 1%. Flammschutz

BS 5852 Crib 5 mit Behandlung. BS 5852 part 1.

EN 1021-1/2

Pflege Siehe ISO Pflegesymbole

NL

Toepassing Bekleding stof

Omschrijving 50% linnen, 35% katoen,

15% viscose. Hoogte 140 cm / 55 in.

Gewicht 1010 gr/str.m

Testgegevens Lichtechtheid 5-6 (ISO 1-8).

Pilling 5 (ISO 1-5). Durability 60.000

Martindale. Washbelading ca. 1%.

Vlamvertragendheid BS 5852 Crib 5 met

behandeling. BS 5852 part 1. EN 1021-1/2

Onderhoud Zie de ISO symbolen

FR

Domaine d'utilisation Tissu d'ameublement

Description 50% lin, 35% coton, 15% viscose.

Largeur 140 cm / 55 in. Poids 1.010 g/ml

Tests Résistance à la lumière 5-6 (ISO 1-8).

Résistance au frottement 5 (ISO 1-5).

Résistance à l'abrasion 60.000 Martindale.

Rétrécissement env. 1%. Normes au feu BS 5852

Crib 5 avec traitement. BS 5852 part 1.

EN 1021-1/2

Entretien Voir les symboles ISO

IT

Destinazione d'uso Tessuti per tappezzeria

Caratteristiche 50% lino, 35% cotone,

15% viscosa. Larghezza 140 cm / 55 in.

Peso 1010 gr/ml

Test Resistenza alla luce 5-6 (ISO 1-8). Pilling 5

(ISO 1-5). Abrasione 60.000 Martindale.

Restringimento circa 1%. Ignifugazione BS 5852

Crib 5 con il trattamento. BS 5852 part 1.

EN 1021-1/2

Manutenzione Per favore seguire simboli ISO

ES

Aplicación Tapicería

Descripción 50% lino, 35% algodón,

15% viscosa. Anchura 140 cm / 55 in.

Peso 1010 gr/ml

Pruebas Resistencia a la luz 5-6 (ISO 1-8).

Relleno 5 (ISO 1-5). Resistencia al desgaste

60.000 Martindale. Encogimiento aprox. 1%.

Resistencia al fuego BS 5852 Crib 5 con

tratamiento. BS 5852 part 1. EN 1021-1/2

Mantenimiento Consulte los símbolos ISO

JP

用途 室内装飾用テキスタイル

組成 麻 50%, 綿 35%, ビスコース 15%.

幅 140 cm / 55 インチ. 重さ 1,010 g/lin.m

テスト 耐光性 5-6 (ISO 1-8) . ピリング 5 (ISO

1-5). 耐久性 マーチンデル値 - 60,000. 収縮 約

1%. 難燃性 BS 5852 part 1, EN 1021-1/2

ケア 詳細は、ISO認証をご覧ください

CN

应用 软装面料

成分 50%亚麻, 35%棉, 15%粘胶纤维.

幅宽 140 cm / 55 in 克重 1010 g/lin.m

耐磨指数 耐光性 5-6 (ISO 1-8). 抗起球度

5 (ISO 1-5). 耐久度60,000 次马丁代尔摩擦实验

(Martindale). 缩水率 大约 1%. 阻燃 BS 5852

part 1, EN 1021-1/2

维护 请参阅ISO符号。



Contact and further information www.sahco.com

Quality and environmental system accreditation according to ISO 9001 and ISO 14001

Encouraging the use of suitable fibres. Durable and high quality. Hazardous substances restricted.