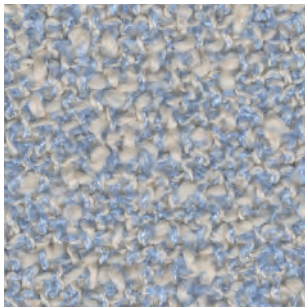
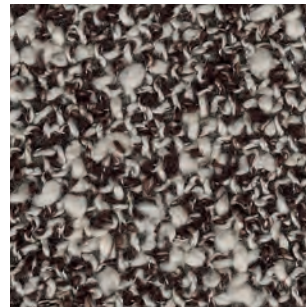


Zero

SAHCO



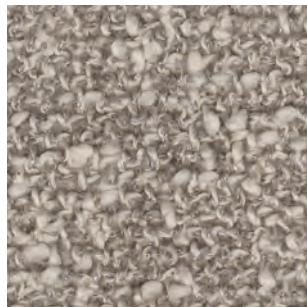
007



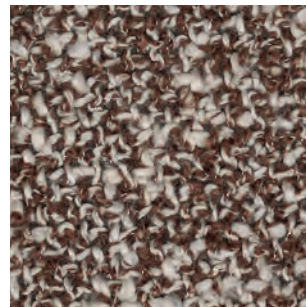
011



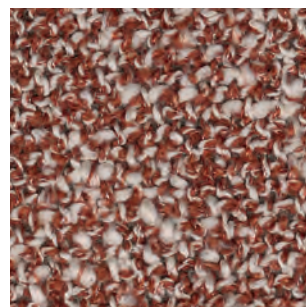
005



012



009



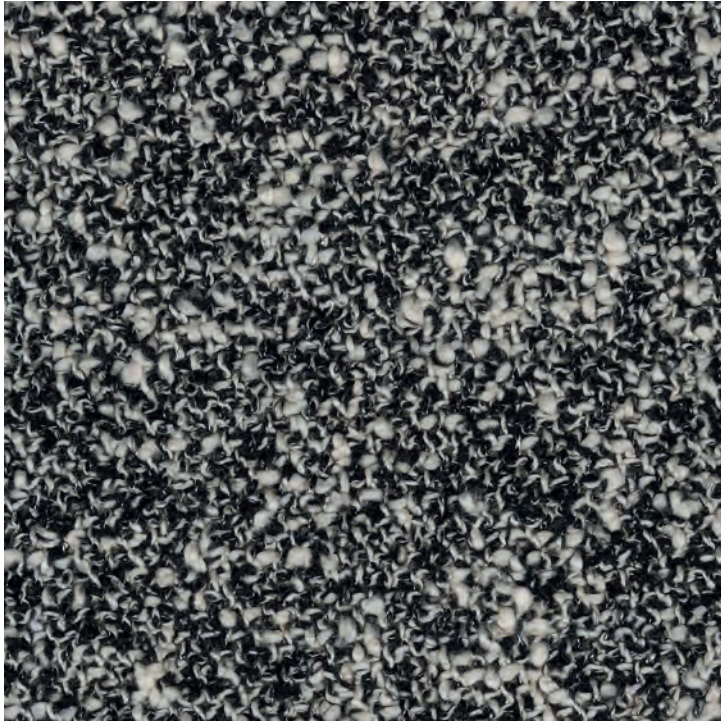
008



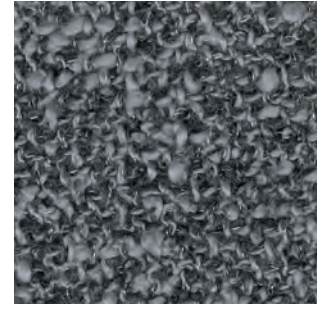
006



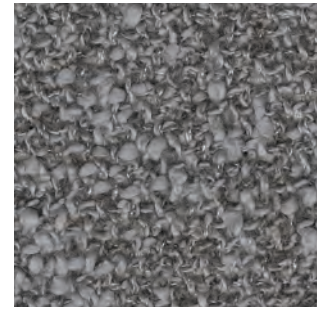
010



004



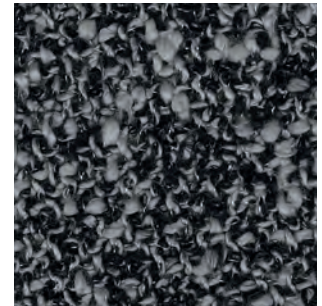
015



016



001



014



002



003



013

Zero

DK

Anvendelse Polstring

Beskrivelse 65% bomuld, 20% polyacryl, 15% polyester. Bredder 140 cm / 55 in. Vægt 740 g/lbm

Testning Lysægted 5-6 (ISO 1-8). Pilling 5 (ISO 1-5). Slidstyrke: 70.000 Martindale. Krympning ca. 2%. Flammesikring BS 5852 Crib 5 med behandling. BS 5852 part 1, ig. s. o. EN 1021-1

Vedligeholdelse Se ISO symboler

UK/US

Application Upholstery

Description 65% cotton, 20% polyacrylic, 15% polyester. Width 140 cm / 55 in. Weight 740 g/lm 26 oz/sq

Tests Lightfastness 5-6 (ISO 1-8). Pilling 5 (ISO 1-5). Durability 70.000 Martindale. Shrinkage ca. 2%. Flame resistance BS 5852 Crib 5 with treatment. BS 5852 part 1, ig. s. o. EN 1021-1

Care Please see the ISO symbols

DE

Anwendungsbereich Bezugsstoff

Beschreibung 65% Baumwolle, 20% Polyacryl, 15% Polyester. Breite 140 cm / 55 in. Gewicht 740 g/lfd. Meter

Testergebnisse Lichtechtheit 5-6 (ISO 1-8). Pilling 5 (ISO 1-5). Scheuertouren 70.000 Martindale. Einlaufquote ca. 2%. Flammenschutz BS 5852 Crib 5 mit Behandlung. BS 5852 part 1, ig. s. o. EN 1021-1

Pflege Siehe ISO Pflegesymbole

NL

Toepassing Bekleding stof

Omschrijving 65% katoen, 20% polyacryl, 15% polyester. Hoogte 140 cm / 55 in. Gewicht 740 gr/str.m

Testgegevens Lichtechtheid 5-6 (ISO 1-8). Pilling 5 (ISO 1-5). Durability 70.000 Martindale. Washbelading ca. 2%. Vlamvertragendheid BS 5852 Crib 5 met behandeling. BS 5852 part 1, ig. s. o. EN 1021-1

Onderhoud Zie de ISO symbolen

FR

Domaine d'utilisation Tissu d'ameublement

Description 65% coton, 20% polyacrylique, 15% polyester. Largeur 140 cm / 55 in. Poids 740 g/ml

Tests Résistance à la lumière 5-6 (ISO 1-8). Résistance au frottement 5 (ISO 1-5). Résistance à l'abrasion 70.000 Martindale. Rétrécissement env. 2%. Normes au feu BS 5852 Crib 5 avec traitement. BS 5852 part 1, ig. s. o. EN 1021-1

Entretien Voir les symboles ISO

IT

Destinazione d'uso Tessuti per tappezzeria

Caratteristiche 65% cotone, 20% poliacrilico, 15% poliestere. Larghezza 140 cm / 55 in. Peso 740 gr/ml

Test Resistenza alla luce 5-6 (ISO 1-8). Pilling 5 (ISO 1-5). Abrasione 70.000 Martindale. Restringimento circa 2%. Ignifugazione BS 5852 Crib 5 con il trattamento. BS 5852 part 1, ig. s. o. EN 1021-1

Manutenzione Per favore seguire simboli ISO

ES

Aplicación Tapicería

Descripción 65% algodón, 20% poliacrílico, 15% poliéster. Anchura 140 cm / 55 in. Peso 740 gr/ml

Pruebas Resistencia a la luz 5-6 (ISO 1-8). Relleno 5 (ISO 1-5). Resistencia al desgaste 70.000 Martindale. Encogimiento aprox. 2%. Resistencia al fuego BS 5852 Crib 5 con tratamiento. BS 5852 part 1, ig. s. o. EN 1021-1

Mantenimiento Consulte los símbolos ISO

JP

用途 室内装飾用テキスタイル

組成 綿 65%, ビスコース 20%, ポリエステル 15%. 幅 140 cm / 55 インチ. 重さ 740 g/lin.m

テスト 耐光性 5-6 (ISO 1-8). ピリング 5 (ISO 1-5). 耐久性 マーチンデール値 - 70,000. 収縮 約 2%

ケア 詳細は、ISO認証をご覧ください

CN

应用 软装面料

成分 65%棉, 20%聚丙烯, 15%涤纶. 幅宽 140 cm / 55 in 克重 740 g/lin.m.

耐磨指数 耐光性 5-6 (ISO 1-8). 抗起球度 5 (ISO 1-5). 耐久度 70,000 次马丁代尔摩擦实验 (Martindale). 缩水率 大约 2%

维护 请参阅ISO符号

