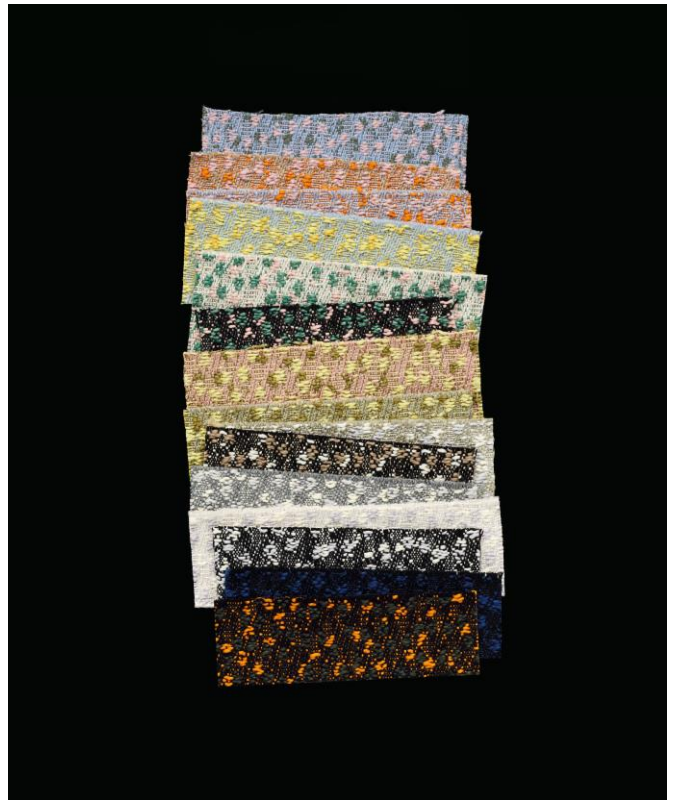
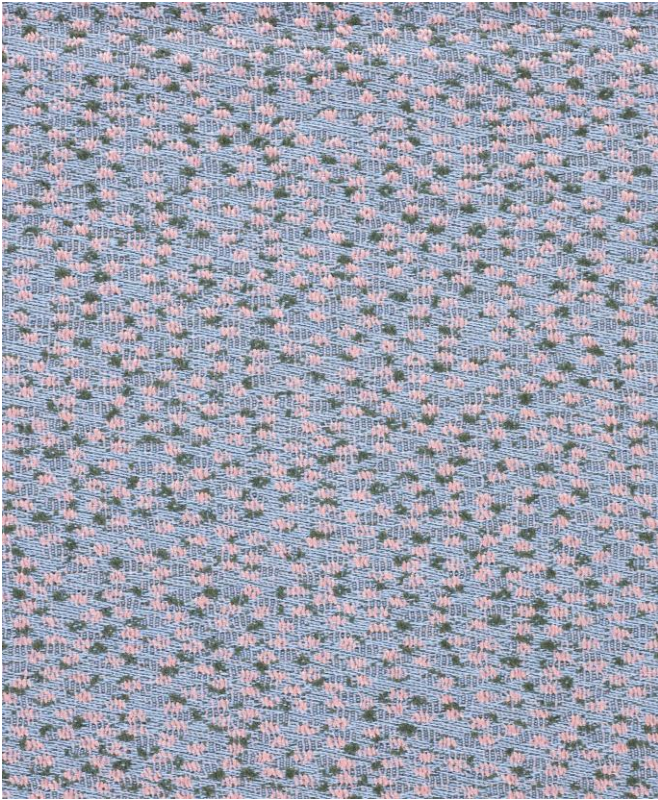


KVADRAT/RAF SIMONS



RIA

Design: Raf Simons

Type: Upholstery

Composition: 84% new wool worsted, 12% viscose, 4% nylon

Yarn type: Worsted

Binding: Jacquard

Width: Approx. 140 cm, 55 inches

Weight: Approx. 840 g/lin.m, 27.1 oz/ly

Repeat: None

Cleaning: Vacuum clean frequently, ideally every week.

Remove stains as soon as they occur, with clean warm water or sparkling water. Extraction clean when necessary.

Extraction cleaning might dissolve water-based glue. Pay attention to temperature and amount of cleaning fluid.

Disinfection, see kvadrat.dk

More info: Care and maintenance kvadrat.dk



10 year warranty



0575/22



Abrasion

Approx. 50.000 Martindale rubs, EN ISO 12947

Abrasion test results exceeding ACT performance guidelines are not an indicator of product lifespan. Multiple factors affect fabric durability and appearance retention

Pilling

Note 4, EN ISO 12945

Seam slippage

Seam parallel to warp: 3.5 mm parallel to weft: 4.5 mm
EN ISO 13 936-2 180 Newton

Lightfastness

Note 7 ISO 105-B02

Fastness to rubbing

Dry note 3-5 ISO 105-X12

Wet note 3-5 ISO 105-X12

Absorption

0.60/Class C (flat), 0.60/Class C (waved) EN ISO 354

Airflow

482 Pa s/m EN 29053

Flame resistance

BS 5852 part 1
BS 5852 crib 5 with treatment *
EN 1021-1/2
IMO FTP Code 2010 Part 8
NF D 60 013
NFPA 260
NFPA 701 with treatment *
SN 198 898 5.3 with treatment *
UNI 9175 1IM
US Cal. Bull. 117-2013

Free from added flame-retardant chemicals as standard

** To pass this test flame retardant treatment is necessary.
We are looking into more environmentally friendly alternatives
but for now, the external finisher may use a treatment
containing halogen-based flame retardants*

ACT Guidelines Woven fabrics

Flammability

US Cal. Bull. 117-2013

Dry & Wet Crocking

Dry Crocking: Grade 4.5
Wet Crocking: Grade 4.5

Colour Fastness to Light

Grade 5.0 minimum 40 hours

Physical properties

Pilling Class 4
Breaking Strength warp 161 / weft 215 lbs.
Seam Slippage warp 24.5 / weft 81 lbs. (Fail)

Abrasion

50.000 cycles Martindale – High Traffic / Public Spaces

Benefits of wool

Wool is a renewable resource
Wool is very comfortable because of its ability to absorb/
give off humidity
Wool is flame retardant
Wool is biodegradable
Wool is naturally soil resistant
Wool ages with grace

Quality benefits

Complies with Möbelfakta
Very good abrasion
Very good lightfastness
Flame retardant

Environmental benefits

Follow the EU Ecolabel dye restrictions incl. AZO dye and heavy metal restrictions
No content of PFCs or 'PFAS'
REACH compliant
Californian Proposition 65 list compliant
LBC Red list compliant
Healthier Hospitals compliant

Green building certificates

Greenguard Gold: Low chemical emission
Health Product Declaration (HPD): Declaring textile content and substance

Country of origin

Norway

Launch

2017

Warranty

10 years. See terms and conditions on kvadrat.dk

Kvadrat packaging and cardboard is recyclable. Cardboard material is FSC certified and / or contains recycled content.

For further information
kvadrat.dk