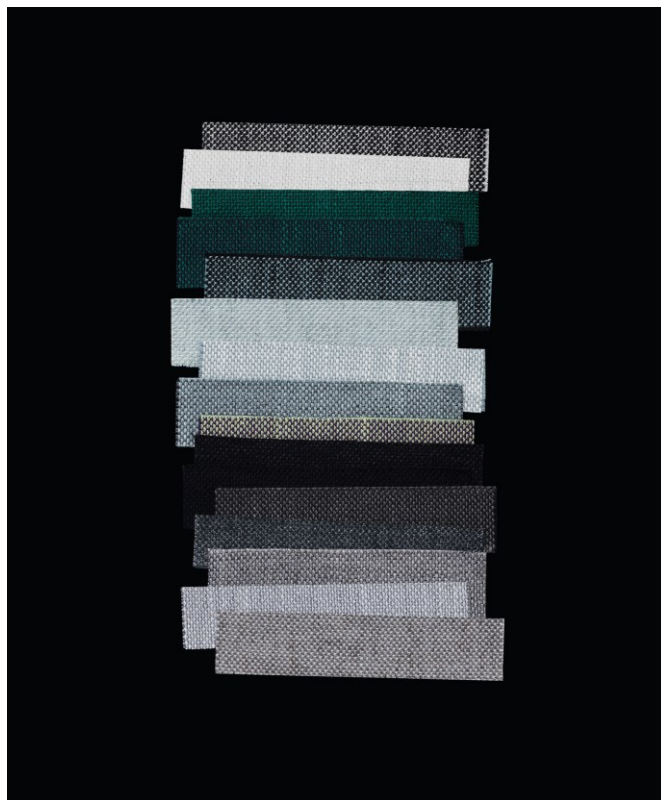
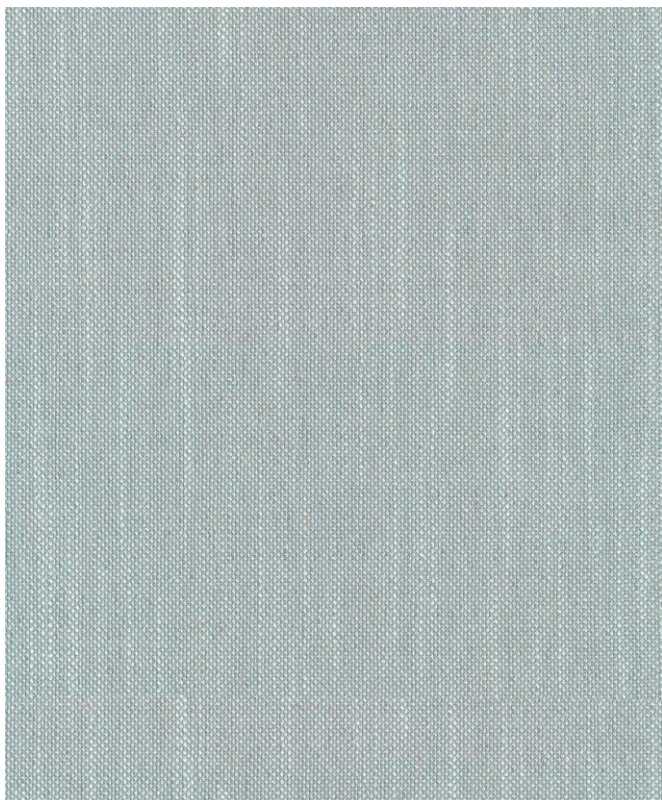


## KVADRAT/RAF SIMONS



### SUNNIVA 3

Design: Raf Simons

Type: Upholstery

Composition: 58% new wool, 25% viscose, 8% linen, 5% nylon, 4% polyester

Yarn type: Woolen spun

Binding: Dobby

Width: Approx. 140 cm, 55 inches

Weight: Approx. 593 g/lin.m, 19.1 oz/ly

Repeat: None

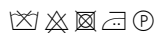
Cleaning: Vacuum clean frequently, ideally every week.

Remove stains as soon as they occur, with clean warm water or sparkling water. Extraction clean when necessary.

Extraction cleaning might dissolve water-based glue. Pay attention to temperature and amount of cleaning fluid.

Disinfection, see kvadrat.dk

More info: Care and maintenance kvadrat.dk



10 year warranty



#### Abrasion

Approx. 50.000 Martindale rubs, EN ISO 12947

*Abrasion test results exceeding ACT performance guidelines are not an indicator of product lifespan. Multiple factors affect fabric durability and appearance retention*

#### Pilling

Note 3, EN ISO 12945

#### Seam slippage

Seam parallel to warp: 7.5 mm parallel to weft: 3.0 mm  
EN ISO 13 936-2 180 Newton

#### Lightfastness

Note 4-7 ISO 105-B02

#### Fastness to rubbing

Dry note 3-5 ISO 105-X12

Wet note 3-5 ISO 105-X12

### Flame resistance

AS/NZS 3837 class 2  
BS 5852 crib 5 with treatment \*  
EN 1021-1/2  
IMO FTP Code 2010:Part 8 with treatment \*  
NFPA 260  
US Cal. Bull. 117-2013

Free from added flame retardant chemicals as standard

*\* To pass this test flame retardant treatment is necessary.  
We are looking into more environmentally friendly alternatives  
but for now, the external finisher may use a treatment  
containing halogen-based flame retardants*

### ACT Guidelines Woven fabrics

#### Flammability

US Cal. Bull. 117-2013

#### Dry & Wet Crocking

Dry Crocking: Grade 5.0  
Wet Crocking: Grade 4.0

#### Colour Fastness to Light

Grade 4.0 minimum 40 hours

#### Physical properties

Pilling Class 3  
Breaking Strength warp 166 / weft 136 lbs.  
Seam Slippage warp 76.5 / weft 23.5 lbs. (Fail)

#### Abrasion

50.000 cycles Martindale – High Traffic / Public Spaces

#### Benefits of wool

Wool is a renewable resource  
Wool is very comfortable because of its ability to absorb/  
give off humidity  
Wool is flame retardant  
Wool is biodegradable  
Wool is naturally soil resistant  
Wool ages with grace

#### Quality benefits

Complies with Möbelfakta  
Very good abrasion  
Good lightfastness  
Flame retardant

### Environmental benefits

Follow the EU Ecolabel dye restrictions incl. AZO dye and heavy metal restrictions  
No content of PFCs or 'PFAS'  
REACH compliant  
Californian Proposition 65 list compliant  
LBC Red list compliant  
Healthier Hospitals compliant

### Green building certificates

Greenguard Gold: Low chemical emission  
Environmental Product Declaration (EPD): Based on a LCA following EN 15804 and follow the standard of ISO 14040  
Health Product Declaration (HPD): Declaring textile content and substance

### Country of origin

Norway

### Warranty

10 years. See terms and conditions on kvadrat.dk

Kvadrat packaging and cardboard is recyclable. Cardboard material is FSC certified and / or contains recycled content.

For further information  
kvadrat.dk